



UNIVERSITY OF MARYLAND ST. JOSEPH MEDICAL CENTER

MEDICAL SPACE FOR LEASE

7505 OSLER DRIVE
TOWSON, MARYLAND 21204



Joe Bradley
☎ 410.494.4892
✉ jbradley@mackenziecommercial.com
MacKenzie Commercial Real Estate Services, LLC

Matt Mueller
☎ 410.494.6658
✉ mmueller@mackenziecommercial.com
MacKenzie Commercial Real Estate Services, LLC

Henson Ford
☎ 410.494.6657
✉ hford@mackenziecommercial.com
MacKenzie Commercial Real Estate Services, LLC

410-821-8585 • 2328 W. Joppa Road, Suite 200 | Lutherville-Timonium, Maryland 21093 • www.MACKENZIECOMMERCIAL.com

FOR LEASE

Baltimore County, MD

THE O'DEA MEDICAL ARTS BUILDING

7505 OSLER DRIVE | TOWSON, MARYLAND 21204

AVAILABLE

Suite 212: 788 sf

Suite 408-410: 1,632 sf - 3,358 sf

Suite 507: 1,002 sf

RENTAL RATE

\$26.50/sf, FS

HIGHLIGHTS

- ▶ Class A medical office space available on the campus of University of Maryland St. Joseph Medical Center
- ▶ A variety of sizes to accommodate large and small practices
- ▶ Covered parking with direct access to the building
- ▶ Easy access to I-695 via N. Charles Street

Join the following specialities:

Cardiology • Orthopaedic • OB/GYN • Vascular Surgery
• Cardio Thoracic Surgery • Internal Medicine • Pediatrics •
General & Hepatobiliary Surgery • Dermatology • Behavioral
Health • Urology • Plastic Surgery • Gastroenterology •
Otolaryngology • Endocrinology • Audiology • Podiatry



Joe Bradley

410.494.4892

jbradley@mackenziecommercial.com

MacKenzie Commercial Real Estate Services, LLC • 410-821-8585 • 2328 W. Joppa Road, Suite 200 | Lutherville-Timonium, Maryland 21093 • www.MACKENZIECOMMERCIAL.com

Matt Mueller

410.494.6658

mmueller@mackenziecommercial.com

Henson Ford

410.494.6657

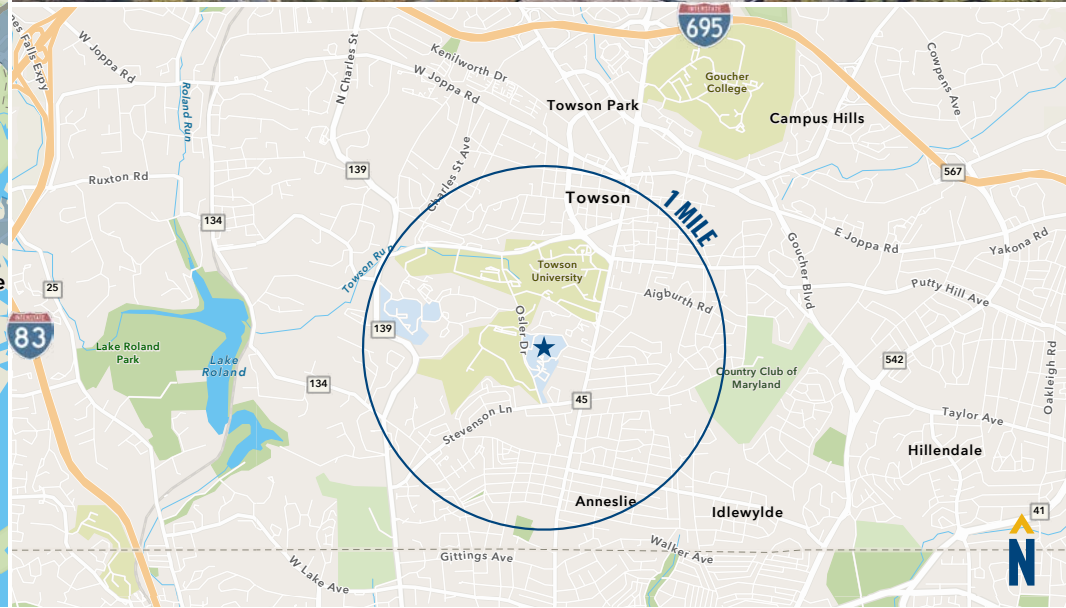
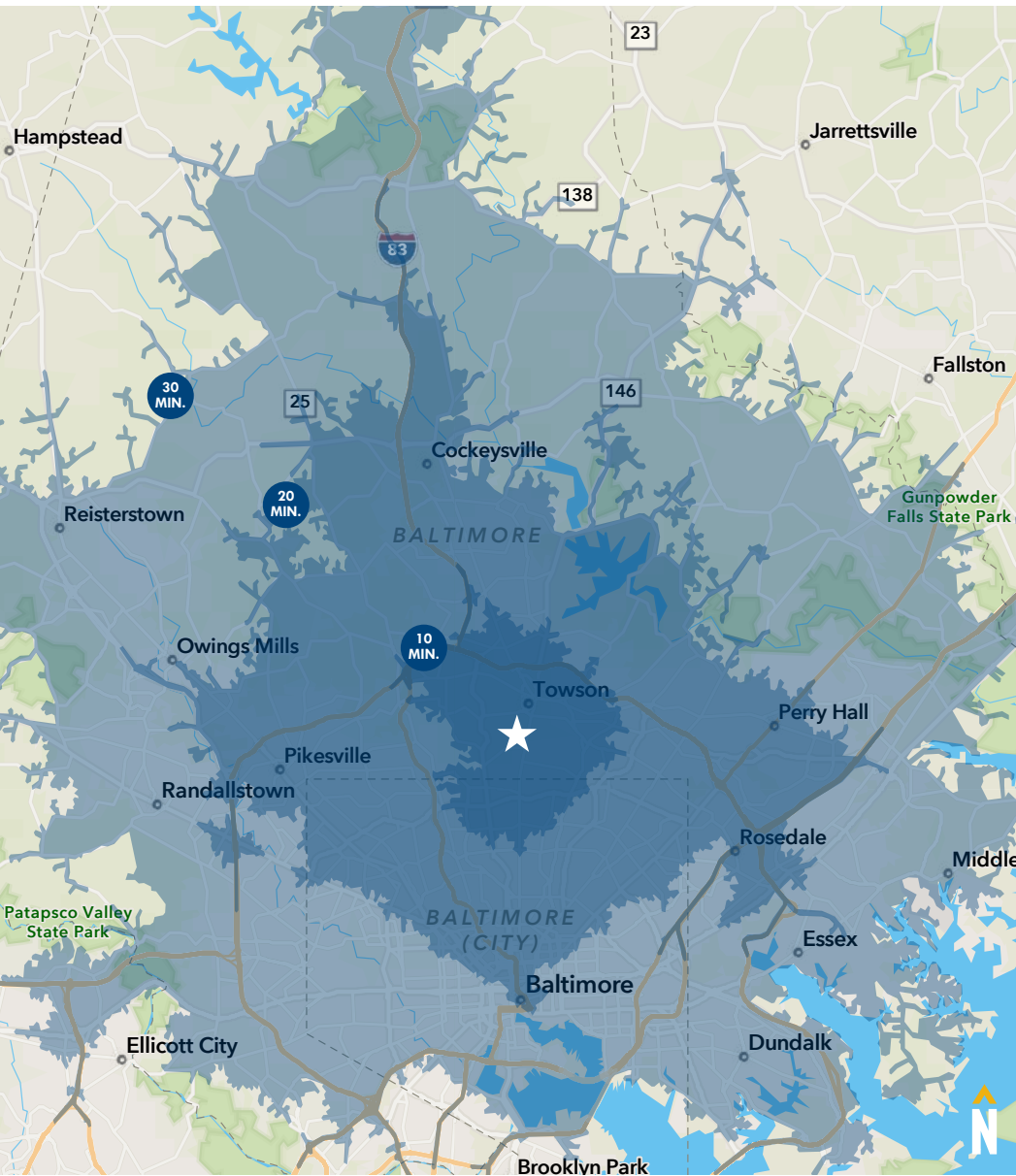
hford@mackenziecommercial.com

FOR LEASE

Baltimore County, MD

LOCATION

THE O'DEA MEDICAL ARTS BUILDING | 7505 OSLER DRIVE | TOWSON, MARYLAND 21204

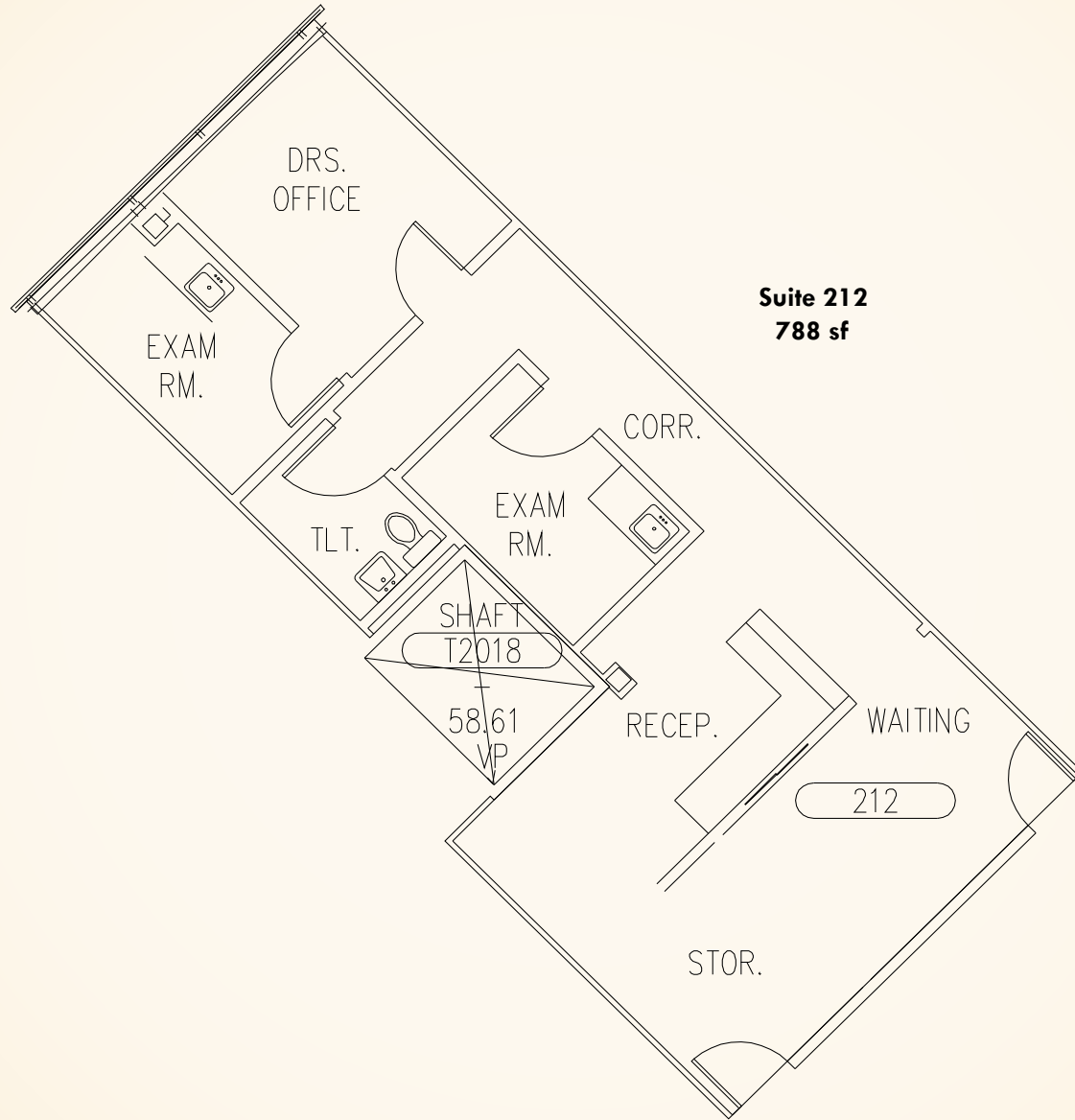


FOR LEASE

Baltimore County, MD

FLOOR PLAN: 2ND FLOOR

THE O'DEA MEDICAL ARTS BUILDING | 7505 OSLER DRIVE | TOWSON, MARYLAND 21204

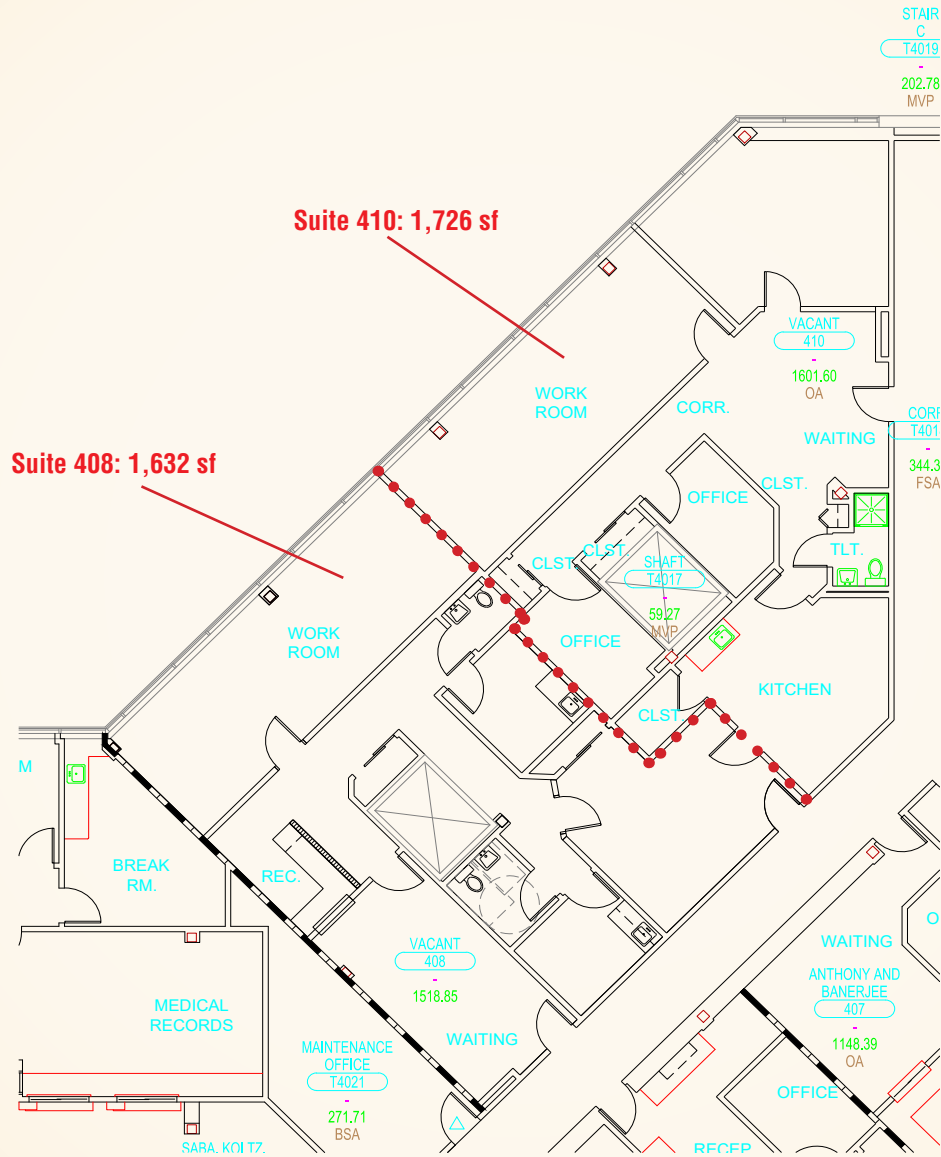


FOR LEASE

Baltimore County, MD

FLOOR PLAN: 4TH FLOOR

THE O'DEA MEDICAL ARTS BUILDING | 7505 OSLER DRIVE | TOWSON, MARYLAND 21204

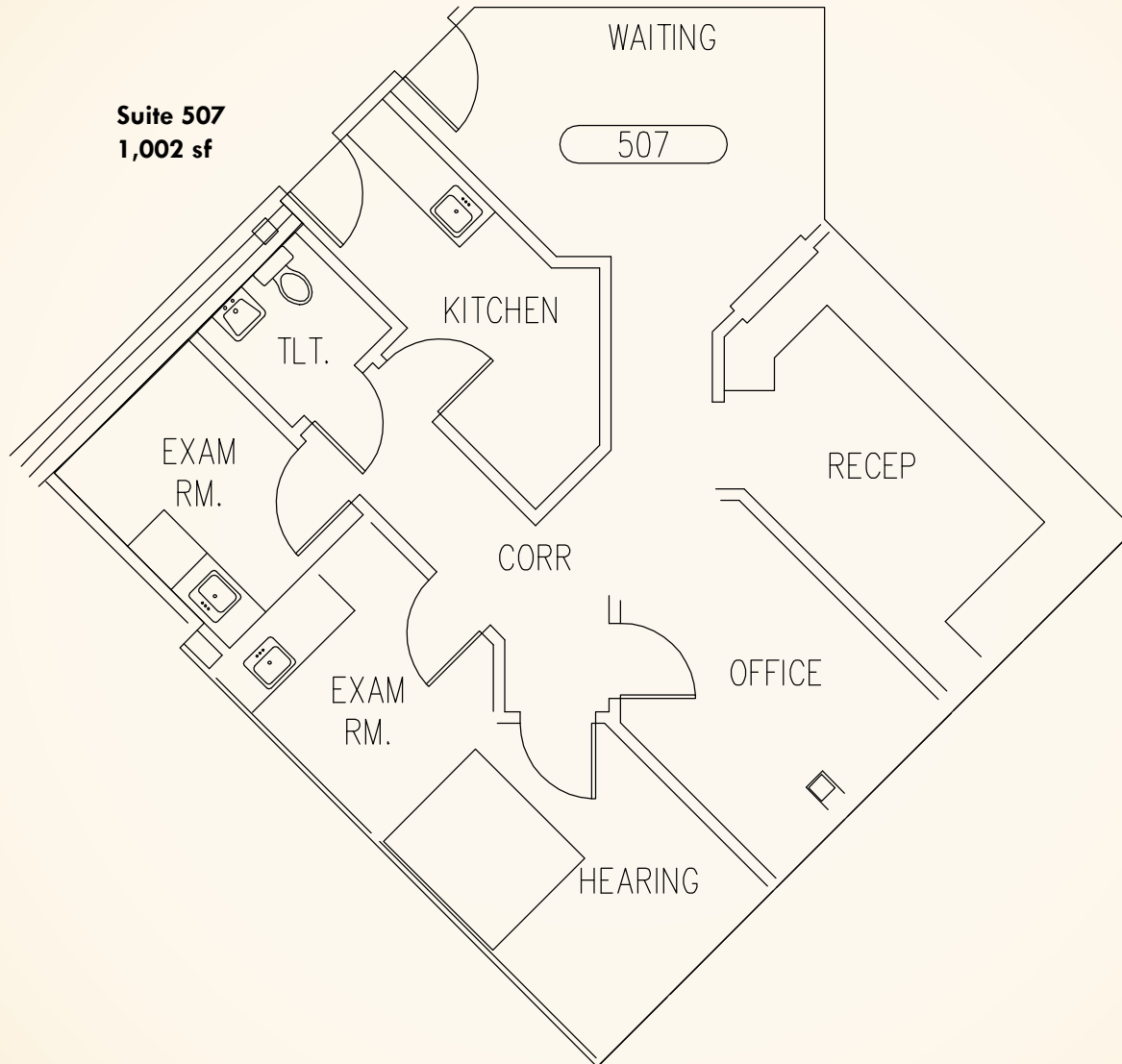


FOR LEASE

Baltimore County, MD

FLOOR PLAN: 5TH FLOOR

THE O'DEA MEDICAL ARTS BUILDING | 7505 OSLER DRIVE | TOWSON, MARYLAND 21204

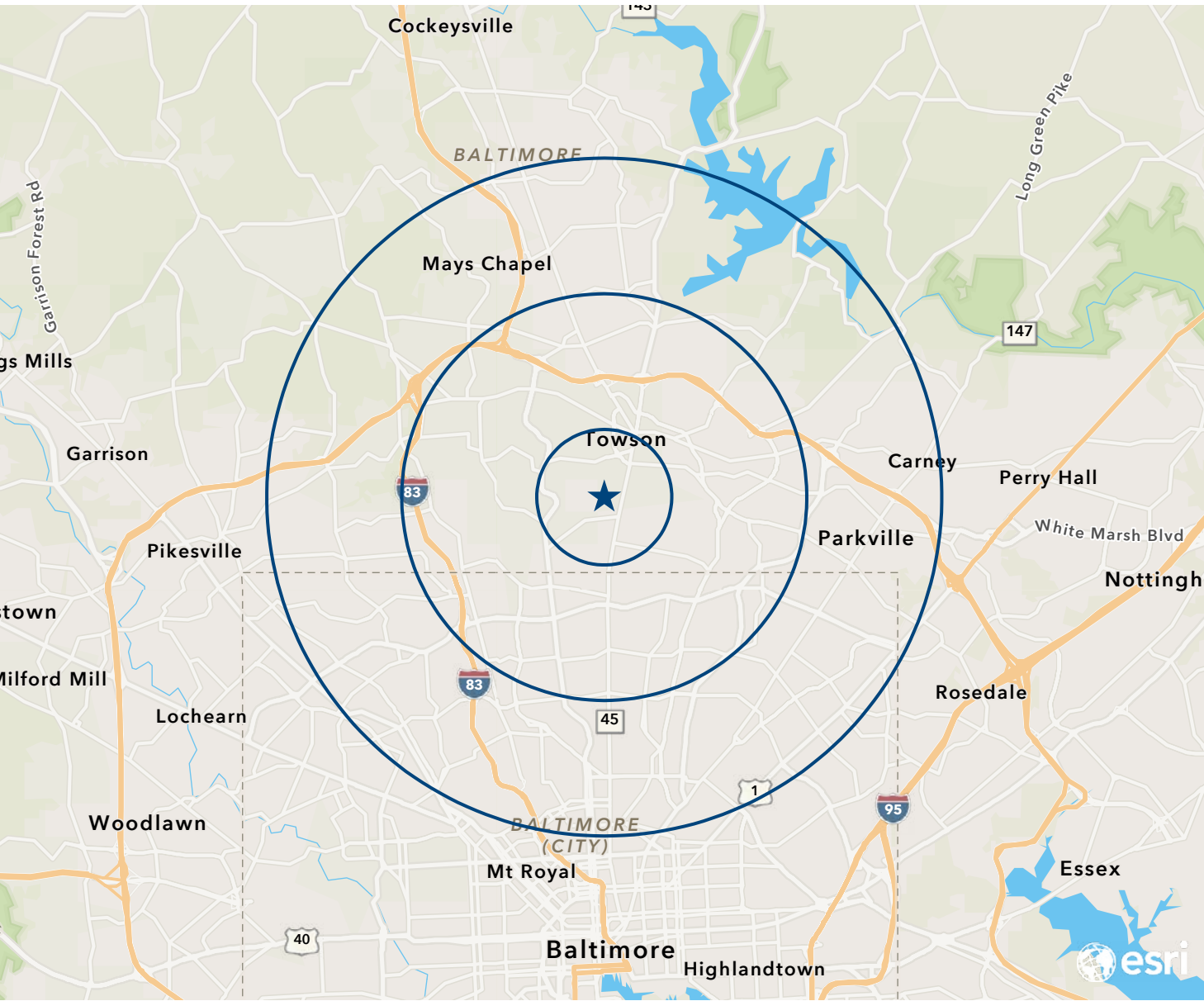


FOR LEASE

Baltimore County, MD

MEDICAL EXPENDITURES 2022

THE O'DEA MEDICAL ARTS BUILDING | 7505 OSLER DRIVE | TOWSON, MARYLAND 21204



TOTAL HEALTHCARE		
\$63,466,630	\$458,918,768	\$1,123,497,470
1 MILE	3 MILE	5 MILE
PHYSICIAN SERVICES		
\$2,604,486	\$18,759,908	\$375,188,071
1 MILE	3 MILE	5 MILE
EYE CARE SERVICES		
\$692,524	\$5,106,635	\$12,487,667
1 MILE	3 MILE	5 MILE
LAB TESTS/X-RAYS		
\$658,229	\$4,825,477	\$11,877,158
1 MILE	3 MILE	5 MILE
DENTAL SERVICES		
\$4,285,825	\$29,797,827	\$72,650,863
1 MILE	3 MILE	5 MILE
PRESCRIPTION DRUGS		
\$3,028,890	\$23,514,200	\$58,250,712
1 MILE	3 MILE	5 MILE
NON-PRESCRIPTION DRUGS		
\$1,509,239	\$11,035,110	\$27,010,771
1 MILE	3 MILE	5 MILE
EYEGASSES AND CONTACT LENSES		
\$1,015,733	\$7,196,966	\$17,519,759
1 MILE	3 MILE	5 MILE
MEDIAN AGE		
25.6	36.7	39.1
1 MILE	3 MILE	5 MILE