

# PACIFIC

Real Estate Services, Inc.

COMMERCIAL INVESTMENT REAL ESTATE

859 Willamette Street, Suite 270  
Eugene, OR 97401

Open Office, Retail,  
or Café' space

1,870 square feet

*\$17.50 per square foot,  
modified gross*



**Kristin Peterson**, Principal Broker  
[Kristin@PacificRealEstateServices.com](mailto:Kristin@PacificRealEstateServices.com)  
*Licensed in the State of Oregon*

**O: 541-687-1434**  
**C: 541-968-6875**

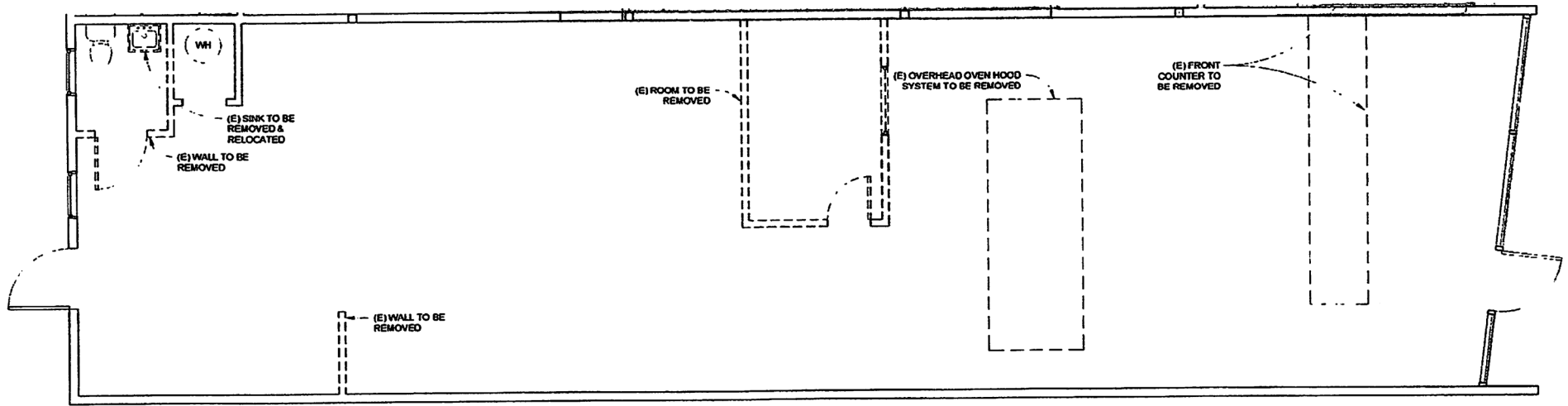
# FOR SUBLEASE

Downtown Retail  
824 Charnelton Street



- Dedicated on-site parking. Adjacent to City parking garage.
- Close to freeway access, downtown living, and Arts district.
- One block to Lane Community College Downtown Campus.

824 Charnelton  
Eugene, Oregon



--- = Building Element To Be Demolished

(1) Demo Plan  
1/4" = 1'-0"

Conceptual shell, based on use