

FOR LEASE

37,000 SQ. FT.



20200 Mount Elliott Detroit, MI 48234

\$8.00 PSF GROSS

Available For Sale
\$2,900,000

- Terrific User/Owner Opportunity
- Tremendous Crane Facility
- Huge fenced parking lot
- Easy access to freeways
- Buss duct
- Floor Drains
- Drive through capability
- Clear span
- Additional 1.1 Acre lot included in sale

Available Space	37,000 SF	Office Size	150 SF
Lot Size	2.06 Acres	Grade Level Doors	10
Zoning	M-4 Heavy Industrial	Shop Lights	Metal Halide / Fluorescent
Year Built	1942	Cranes	(2) 20 Ton
Building Name	Gemini Industrial	Clear Ceiling Height	40'
Location	Mt. Elliott & Eight Mile	Electrical	480 V 2000 AMPS
Heat	Radiant	Taxes	\$16,103.79 (2020)

Burger

& COMPANY

38345 West 10 Mile Road, Suite 100,
Farmington Hills, MI 48335

Joseph G. Pellerito

Senior Associate

Cell Phone: (248) 417-8246

Email: joe.pellerito@burgercollc.com

248-536-2888

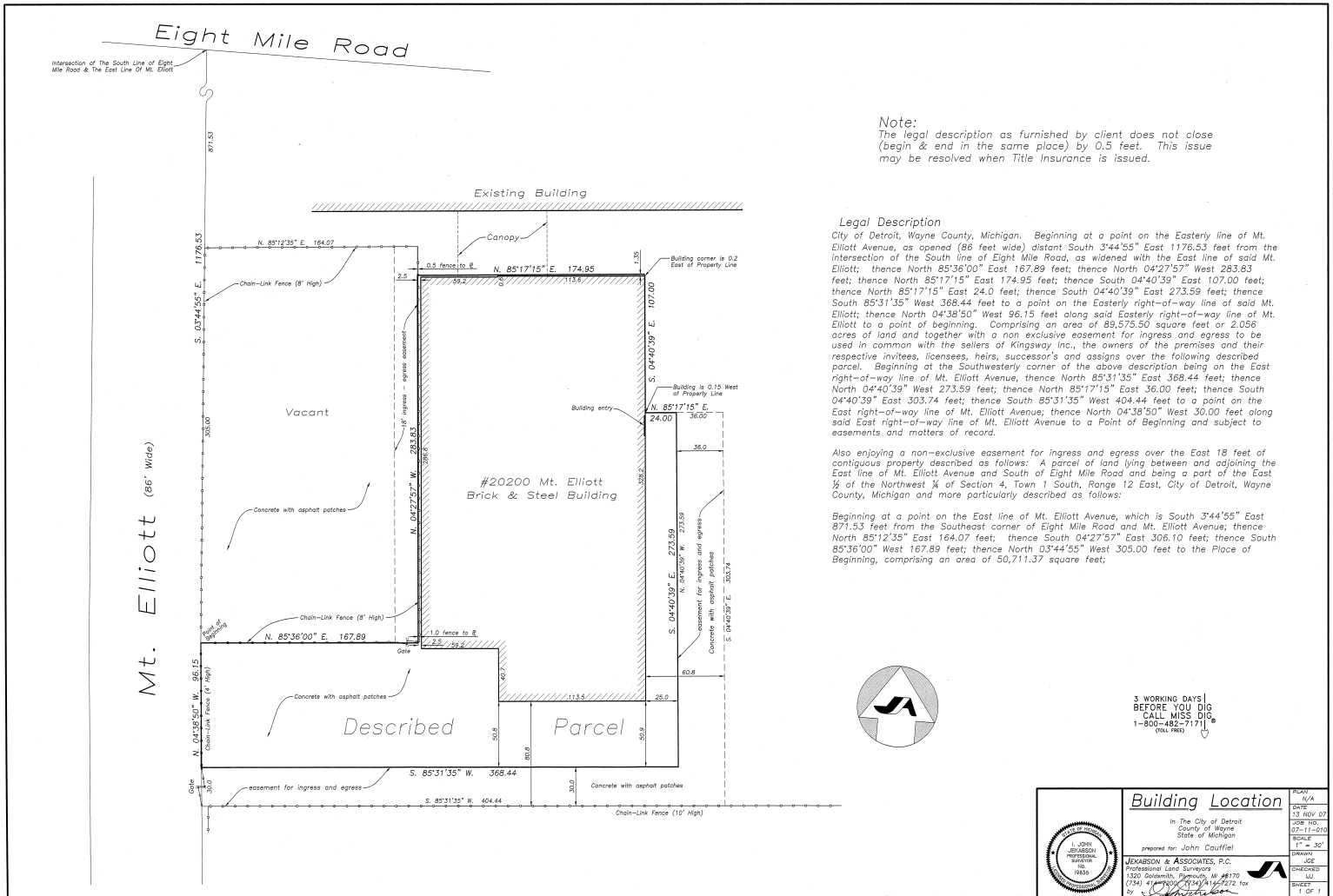
WWW.BURGERCOLLC.COM



Information contained herein is deemed to be reliable but is not guaranteed and may be withdrawn at any time.



SURVEY



3 WORKING DAYS
BEFORE YOU DIG
CALL MISS DIG
1-800-482-7171
(MI ONLY)

	Building Location		PLAT	N/A	
	in the City of Detroit County of Wayne State of Michigan		DATE	13 NOV 07	
prepared for: John Couffiel JUSKABSON & ASSOCIATES, P.C. Professional Land Surveyors 1300 Southfield, Farmington Hills, MI 48335 (734) 417-8246 / 417-2712 fax		SCALE	1" = 30'	DRAWN	JG
		CHECKED	LM	DATE	11/13/07
		SHEET	1	OF	1

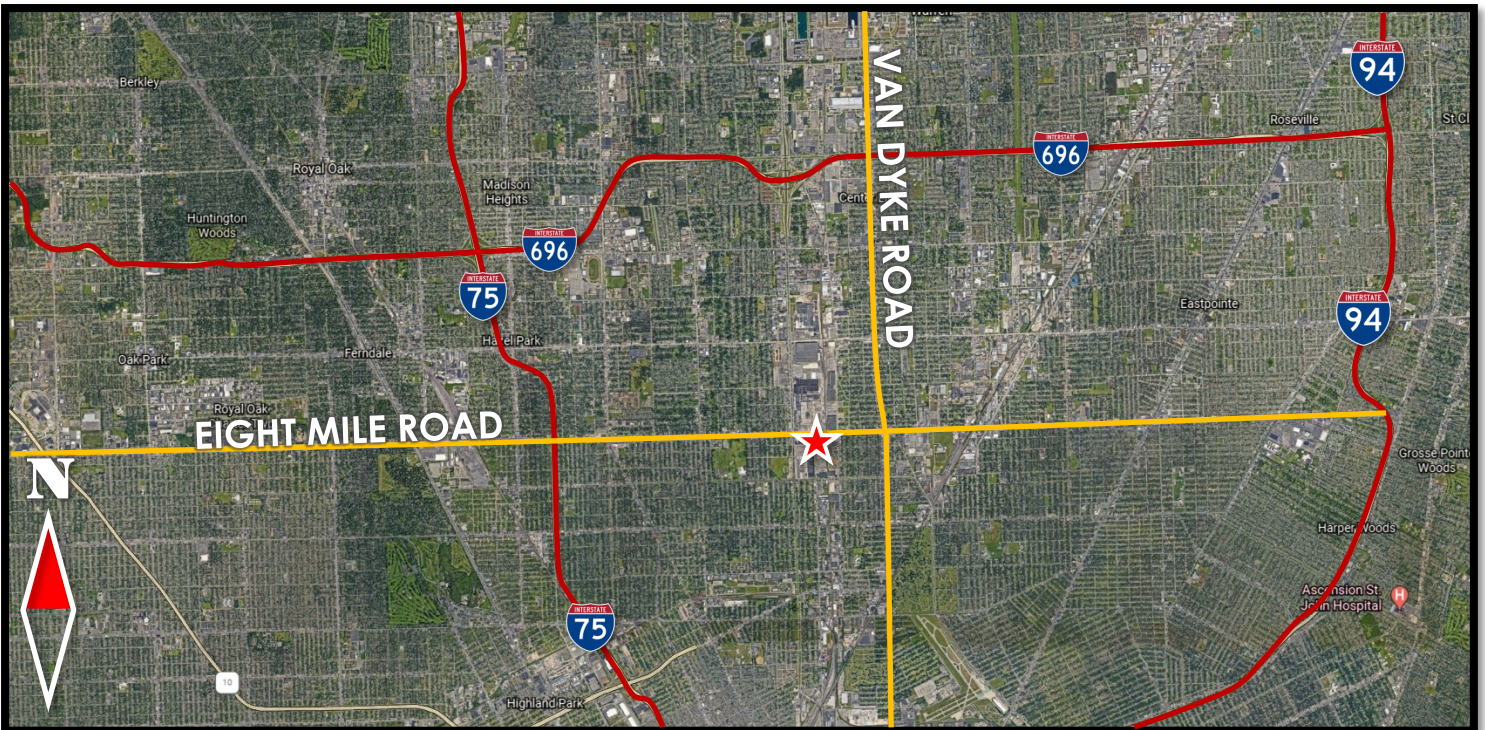
Joseph G. Pellerito

Senior Associate

Cell Phone: (248) 417-8246

Email: joe.pellerito@burgercollc.com

AERIAL VIEWS



Joseph G. Pellerito

Senior Associate

Cell Phone: (248) 417-8246

Email: joe.pellerito@burgercollc.com

38345 West 10 Mile Road, Suite 100, Farmington Hills, MI 48335 | Office: 248-536-2888 | www.burgercollc.com

Information contained herein is deemed to be reliable but is not guaranteed and may be withdrawn at any time.