

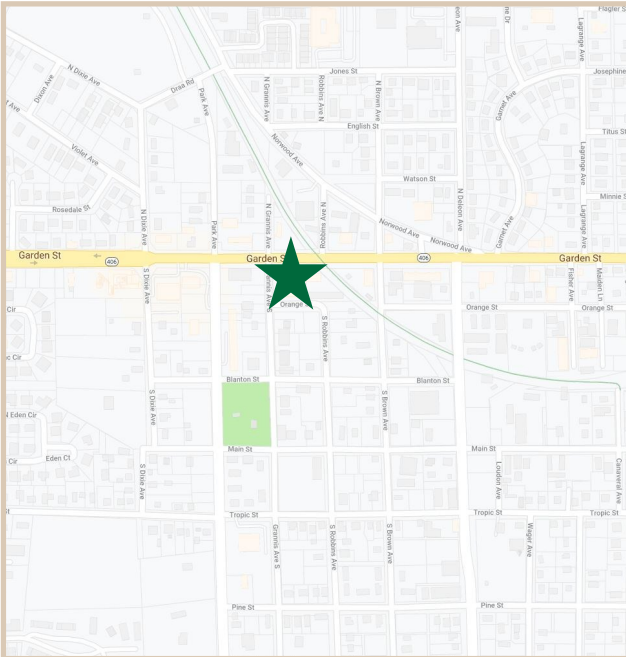
# FOR LEASE

Garden Street Office Centre

1225-1231 Garden Street, Titusville, FL, 32796

## PROPERTY FACTS

Building Area:	20,000 Sq. Ft.
Parcel Size:	1.14 Acres
Property Configuration:	Three Buildings: -Office Building 10,000 Sq. Ft. -Retail Buildings 5,000 Sq. Ft. 5,000 Sq. Ft.
Unit Range:	940-4,937 Sq. Ft.
Year Built:	1986
Construction:	Concrete Block & Stucco
Use:	Office / Retail Use
Building Height:	Office Building: Two Stories Retail Buildings: One Story



## PROPERTY HIGHLIGHTS

Price	Currently offering new leasing incentives. These units are competitively priced, providing excellent value for newly renovated spaces.
Signage	Monument sign slots (for select units) are provided by the landlord. Façade sign slots for the office units are provided by the landlord.
Location	One mile west of U.S. Highway One, near major retail tenants such as Publix, Dollar General, McDonalds, etc.
Aesthetics	Freshly renovated with a monument sign, new paint, façade signs over each business, and renovated suites. The landscape is regularly maintained to communicate a professional appearance across the plaza.



**CHARLES A. VON STEIN, INC.**  
*Commercial Property Management,  
Sales & Leasing Specialists since 1963*  
626 Old Dixie Highway SW  
Vero Beach, FL 32962  
[www.vscrc.com](http://www.vscrc.com)

### CONTACT INFO:

Brevard County:	321.725.1961
Indian River County:	772.778.4885
Fax:	772.778.4908
Leasing:	<a href="mailto:leasing@vscrc.com">leasing@vscrc.com</a>

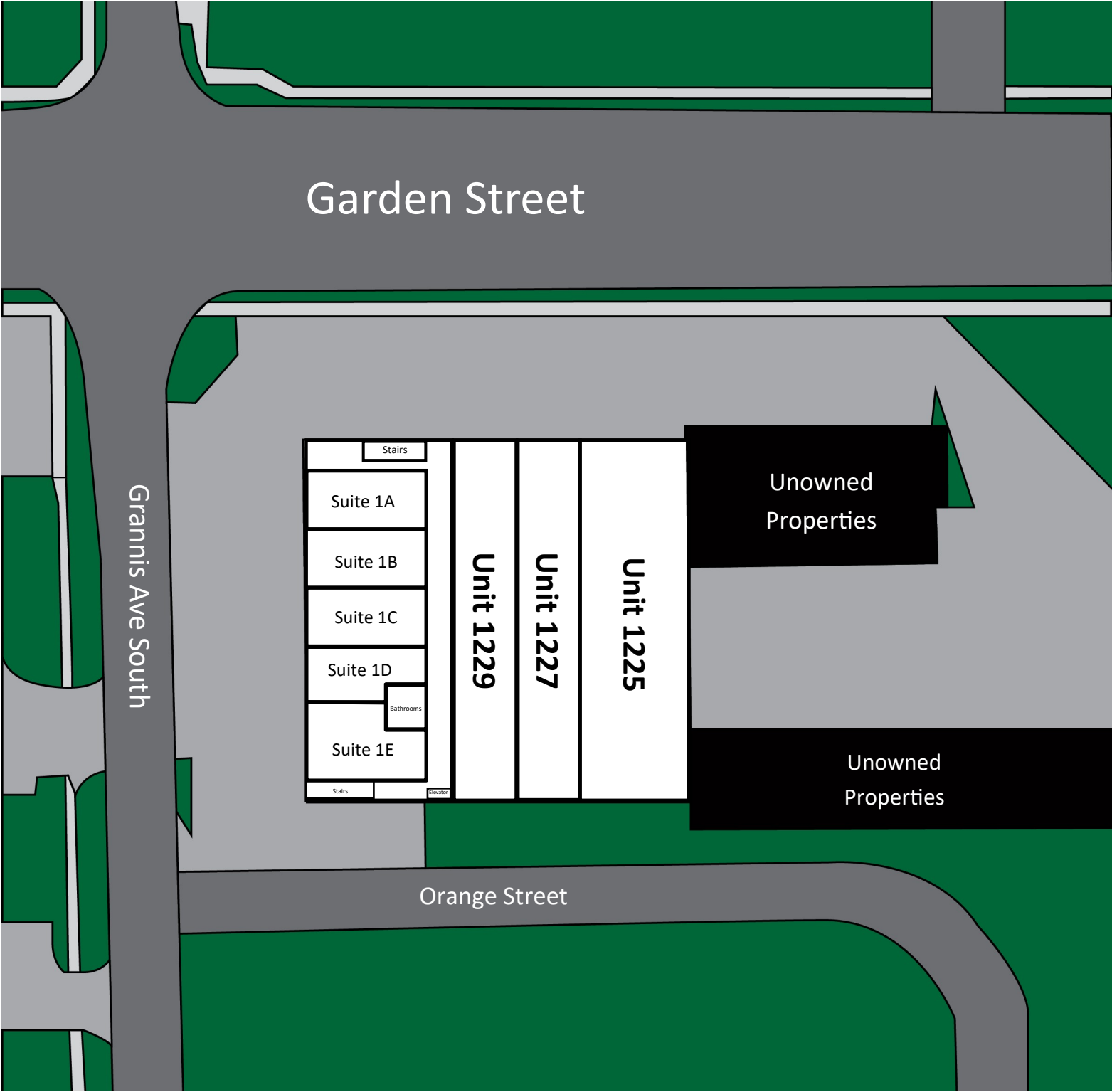
ALL INFORMATION FURNISHED REGARDING PROPERTY FOR SALE, RENTAL OR FINANCING SOURCES DEEMED RELIABLE, BUT NO WARRANTY OR REPRESENTATION IS MADE AS TO THE ACCURACY THEREOF AND SAME IS SUBMITTED SUBJECT TO ERRORS, OMISSIONS, CHANGE OF PRICE, RENTAL OR OTHER CONDITIONS, PRIOR SALE, LEASING OR FINANCING OR WITHDRAWAL WITHOUT NOTICE.

# SITE PLAN

Site Plan:  
First Floor

Garden Street Office Centre

1225-1231 Garden Street, Titusville, FL, 32796



**CHARLES A. VON STEIN, INC.**  
*Commercial Property Management,  
Sales & Leasing Specialists since 1963*  
626 Old Dixie Highway SW  
Vero Beach, FL 32962  
[www.vscrc.com](http://www.vscrc.com)

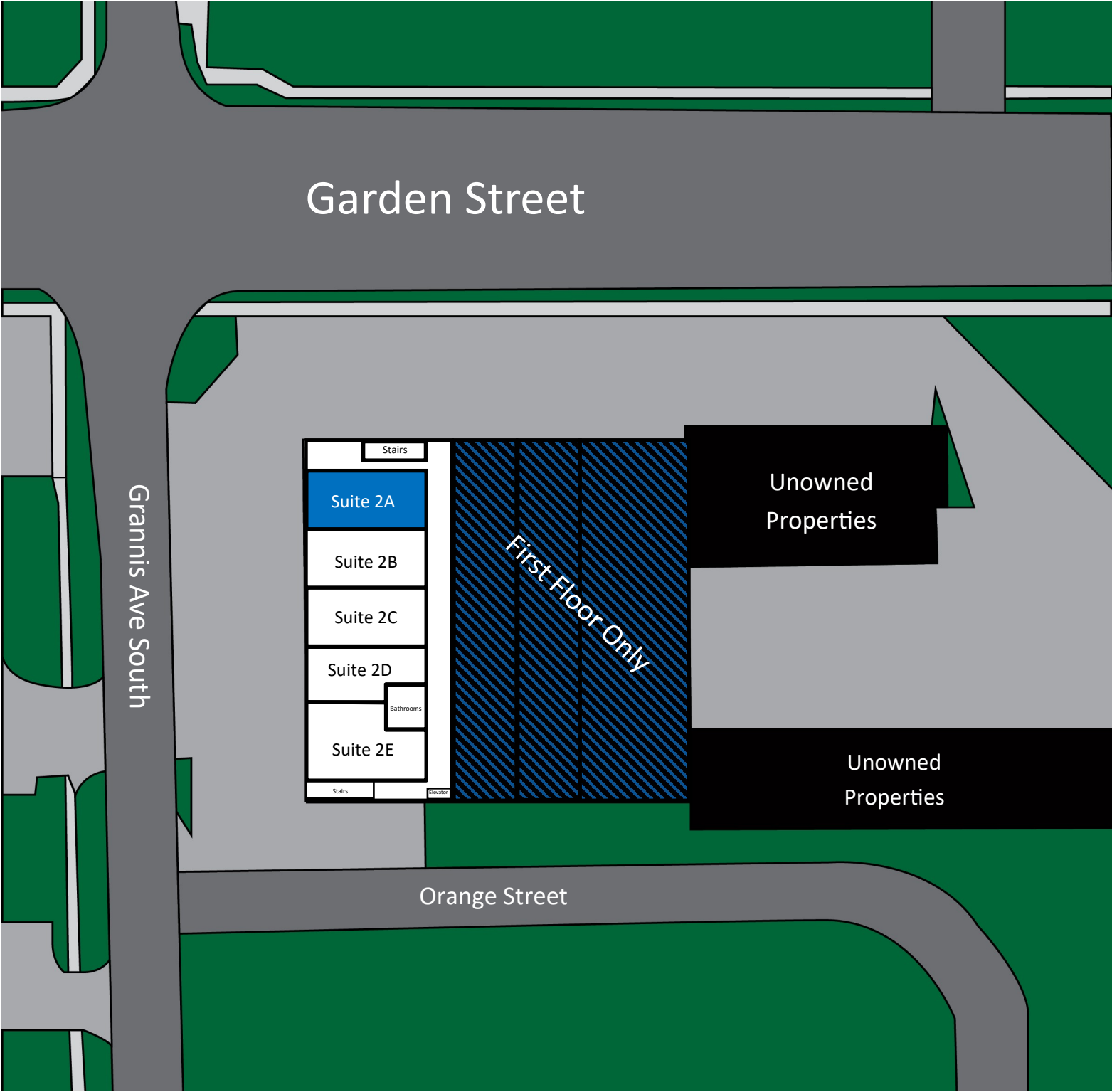
**CONTACT INFO:**  
Brevard County: 321.725.1961  
Indian River County: 772.778.4885  
Fax: 772.778.4908  
Leasing: [leasing@vscrc.com](mailto:leasing@vscrc.com)

# SITE PLAN

Site Plan:  
Second Floor

Garden Street Office Centre

1225-1231 Garden Street, Titusville, FL, 32796



**CHARLES A. VON STEIN, INC.**  
*Commercial Property Management,  
Sales & Leasing Specialists since 1963*  
626 Old Dixie Highway SW  
Vero Beach, FL 32962  
[www.vscore.com](http://www.vscore.com)

**CONTACT INFO:**  
Brevard County: 321.725.1961  
Indian River County: 772.778.4885  
Fax: 772.778.4908  
Leasing: [leasing@vscre.com](mailto:leasing@vscre.com)

# UNITS FOR LEASE

## Second Floor

## Garden Street Office Centre

1225-1231 Garden Street, Titusville, FL, 32796

Commercial Real Estate Listings - Q3 2024										
UNIT	SIZE		RATE		MONTHLY RATE	UTILITIES INCLUDED				USAGE
						WATER	ELECTRIC	TRASH	CABLE	
2A	800	S F	\$12.00	SF/ YR	\$800.00	Yes	Yes	Yes	No	Recently Renovated Office Space with Electric Water and Trash Included



**CHARLES A. VON STEIN, INC.**

**Commercial Property Management,  
Sales & Leasing Specialists since 1963**  
626 Old Dixie Highway SW  
Vero Beach, FL 32962  
[www.vscrc.com](http://www.vscrc.com)

## CONTACT INFO:

**CONTACT INFO:**  
 Brevard County: 321.725.1961  
 Indian River County: 772.778.4885  
 Fax: 772.778.4908  
 Leasing: [leasing@vscre.com](mailto:leasing@vscre.com)

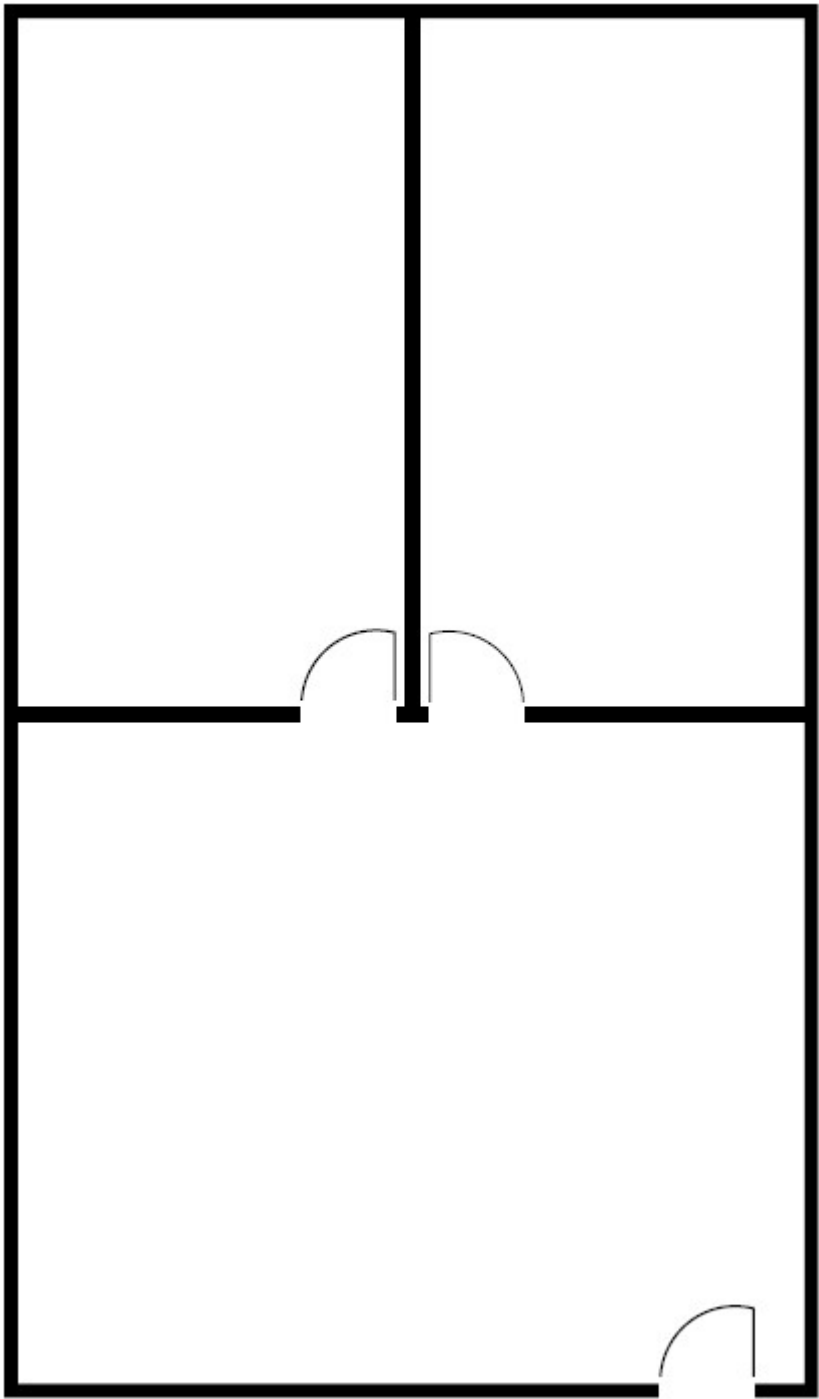
ALL INFORMATION FURNISHED REGARDING PROPERTY FOR SALE, RENTAL OR FINANCING SOURCES DEEMED RELIABLE, BUT NO WARRANTY OR REPRESENTATION IS MADE AS TO THE ACCURACY THEREOF AND SAME IS SUBMITTED SUBJECT TO ERRORS, OMISSIONS, CHANGE OF PRICE, RENTAL OR OTHER CONDITIONS, PRIOR SALE, LEASING OR FINANCING OR WITHDRAWAL WITHOUT NOTICE.

# FLOOR PLAN

Unit 2A

Garden Street Office Centre

1225-1231 Garden Street, Titusville, FL, 32796



**CHARLES A. VON STEIN, INC.**

*Commercial Property Management,  
Sales & Leasing Specialists since 1963*  
626 Old Dixie Highway SW

**CONTACT INFO:**

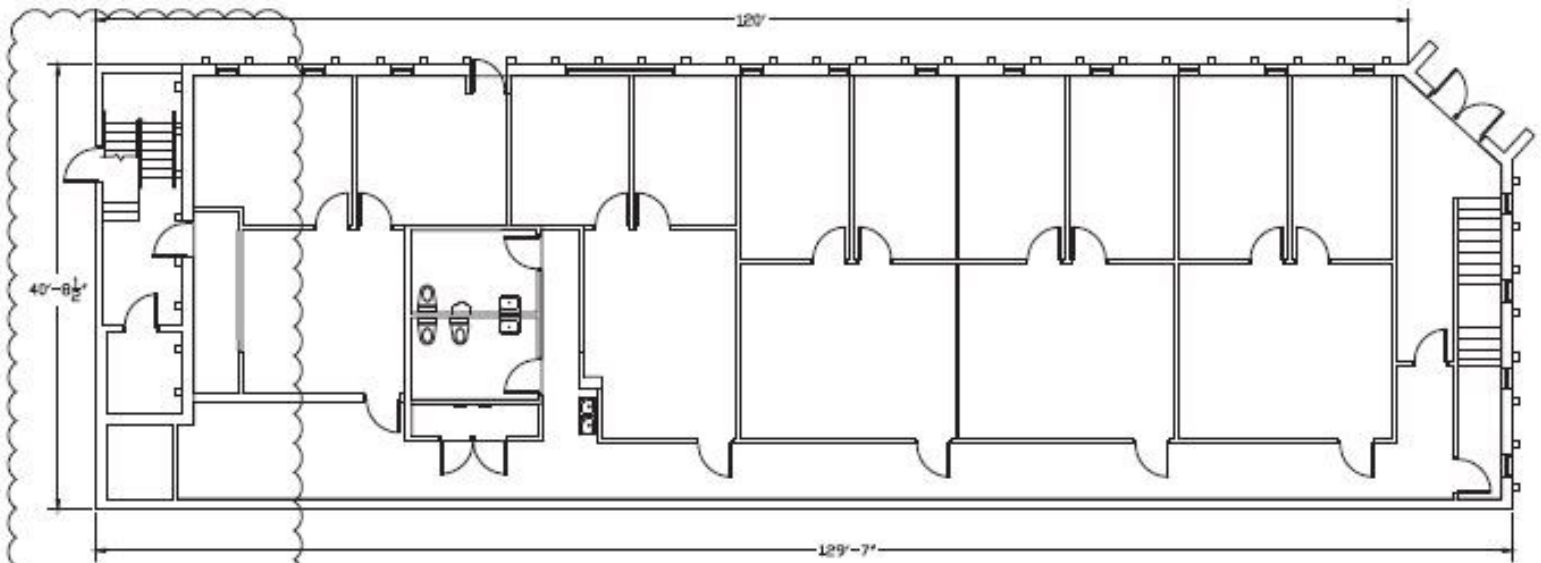
Brevard County: 321.725.1961  
Indian River County: 772.778.4885

# FLOOR PLAN LAYOUT

Office Suites

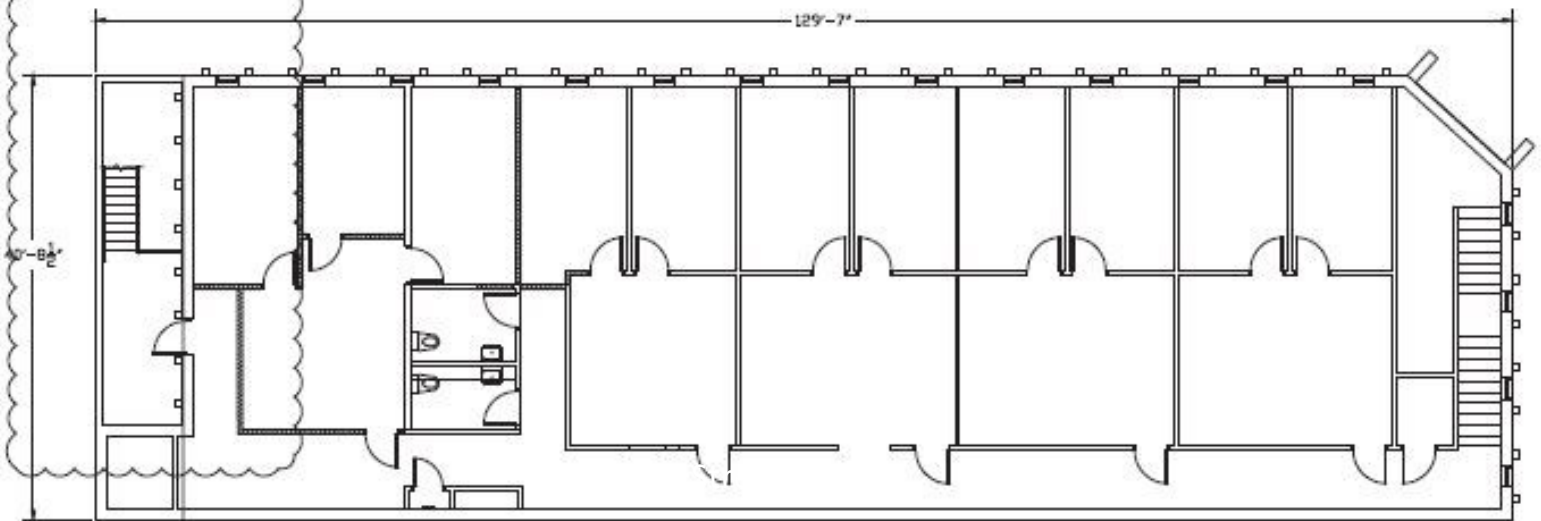
Garden Street Office Centre

1225-1231 Garden Street, Titusville, FL, 32796



## 1ST FLOOR KEY/WORK PLAN

SCALE: 3/32" = 1'-0"



## 2ND FLOOR KEY/WORK PLAN

SCALE: 3/32" = 1'-0"



### CHARLES A. VON STEIN, INC.

*Commercial Property Management,  
Sales & Leasing Specialists since 1963*

626 Old Dixie Highway SW  
Vero Beach, FL 32962  
[www.vscrc.com](http://www.vscrc.com)

### CONTACT INFO:

Brevard County:	321.725.1961
Indian River County:	772.778.4885
Fax:	772.778.4908
Leasing:	<a href="mailto:leasing@vscrc.com">leasing@vscrc.com</a>

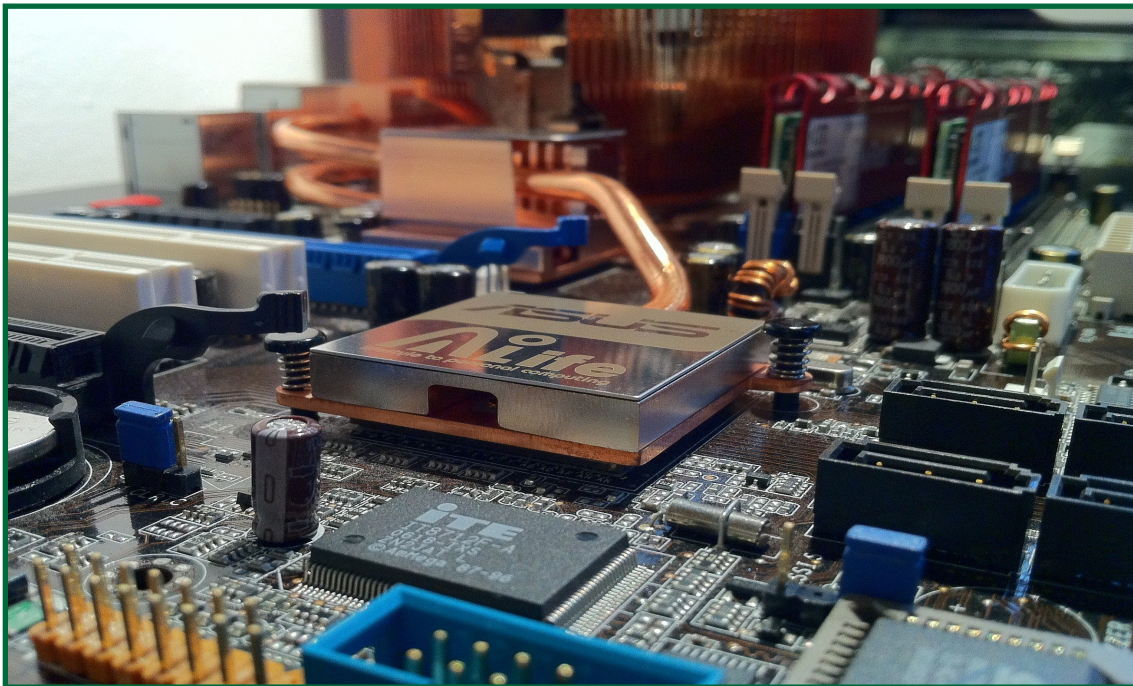


## *Economy of Titusville*



Titusville commands a diversified and developed local economy. This is demonstrated by Titusville's encompassing range of industries and occupations available to the local population. Investors and tenants alike will benefit from occupying space in this flourishing

environment. The economy of Titusville itself is anchored by a diverse cluster of significant employers, insulating the region from instability.



### **CHARLES A. VON STEIN, INC.**

*Commercial Property Management,  
Sales & Leasing Specialists since 1963*  
626 Old Dixie Highway SW  
Vero Beach, FL 32962  
[www.vscrc.com](http://www.vscrc.com)

### **CONTACT INFO:**

Brevard County:	321.725.1961
Indian River County:	772.778.4885
Fax:	772.778.4908
Leasing:	<a href="mailto:leasing@vscrc.com">leasing@vscrc.com</a>

# EMPLOYMENT IN TITUSVILLE

Garden Street Office Centre

1225-1231 Garden Street, Titusville, FL, 32796

## *Major Employers in Titusville*

- **Kennedy Space Center (NASA)** - Space exploration and services (Includes federal employees and contract positions)
- **Parrish Medical Center (PMC)** - Health services provider
- **Knight's Armament** - Weapons, firearms, and munitions manufacturer
- **Professional Aircraft Accessories** - Aviation components manufacturer
- **Boeing** - Aerospace (office)
- **Barn Light Electric** - Electrical fixtures manufacturer
- **Ecklers Industries** - Automotive parts and components
- **Blue Origin** - Rocket manufacturer
- **Astro-tech (Lockheed Martin)** - Aerospace components assembly
- **SpaceX** - Rocket manufacturer/launch operations
- **Paragon Plastics** - Thermos-formed plastic maker
- **Space Coast Regional Airport** - Helicopter training, weightless training, warbird museum and airport services



### **CHARLES A. VON STEIN, INC.**

*Commercial Property Management,  
Sales & Leasing Specialists since 1963*  
626 Old Dixie Highway SW  
Vero Beach, FL 32962  
[www.vscrc.com](http://www.vscrc.com)

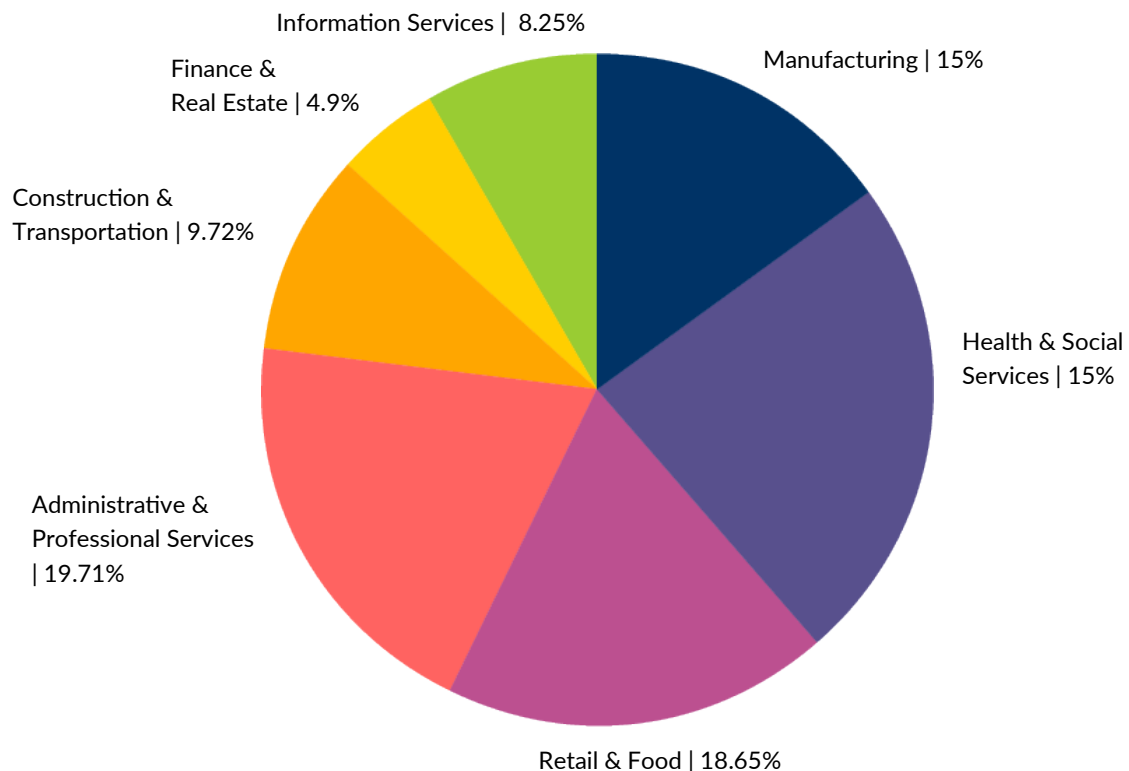
### **CONTACT INFO:**

Brevard County:	321.725.1961
Indian River County:	772.778.4885
Fax:	772.778.4908
Leasing:	<a href="mailto:leasing@vscrc.com">leasing@vscrc.com</a>



## Titusville, FL | Industry Analysis

Titusville hosts a diversified variety of well-developed industries. This flourishing economic ecosystem fosters a robust environment for business that continues to contribute to the ongoing growth in the area. The breakdown of information found on the pie chart below illustrates data from an industry analysis of Titusville, FL. This industry information is helpful in better understanding the ample opportunity built into this area's local economy.



### CHARLES A. VON STEIN, INC.

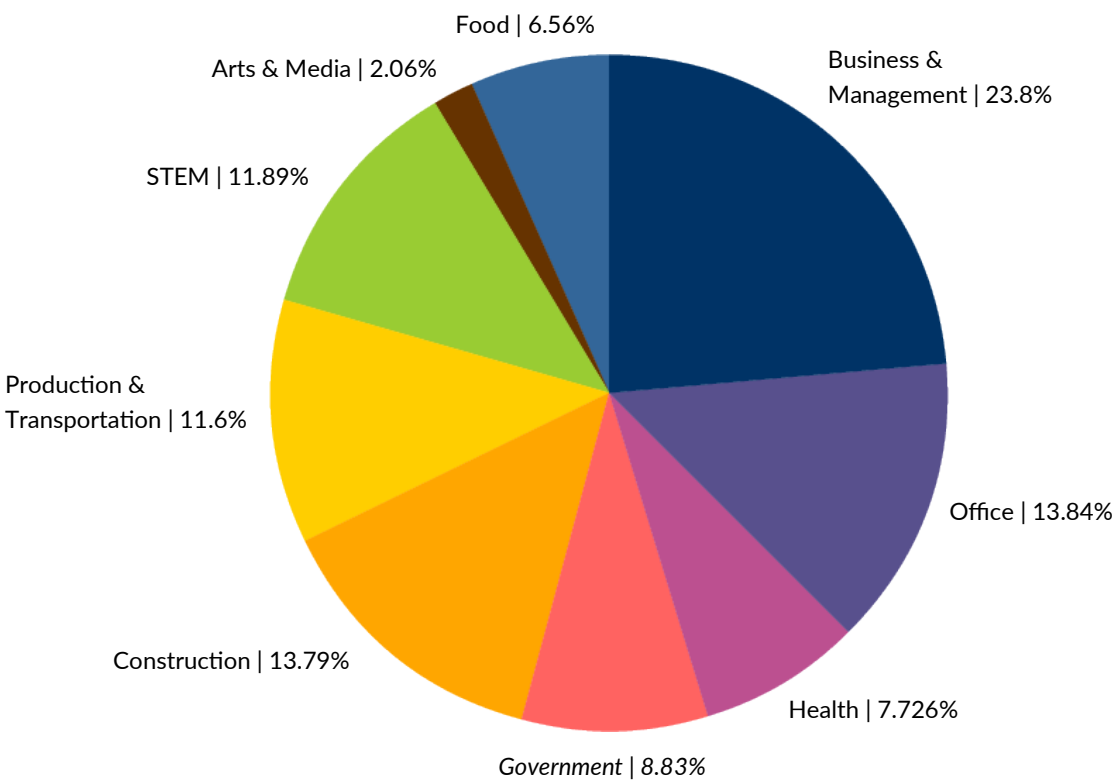
Commercial Property Management,  
Sales & Leasing Specialists since 1963  
626 Old Dixie Highway SW  
Vero Beach, FL 32962  
[www.vscrc.com](http://www.vscrc.com)

### CONTACT INFO:

Brevard County:	321.725.1961
Indian River County:	772.778.4885
Fax:	772.778.4908
Leasing:	<a href="mailto:leasing@vscrc.com">leasing@vscrc.com</a>

## Titusville, FL | Occupations Analysis

Titusville also offers a large variety of occupations. This diversified economic ecosystem fosters a healthy job market that helps cultivate ongoing growth in the area. The compilation of information found on the pie chart below illustrates data from an occupation analysis of Titusville, FL. This employment information is an illuminating tool for better understanding the makeup of what Titusville has to offer both consumers and investors alike.



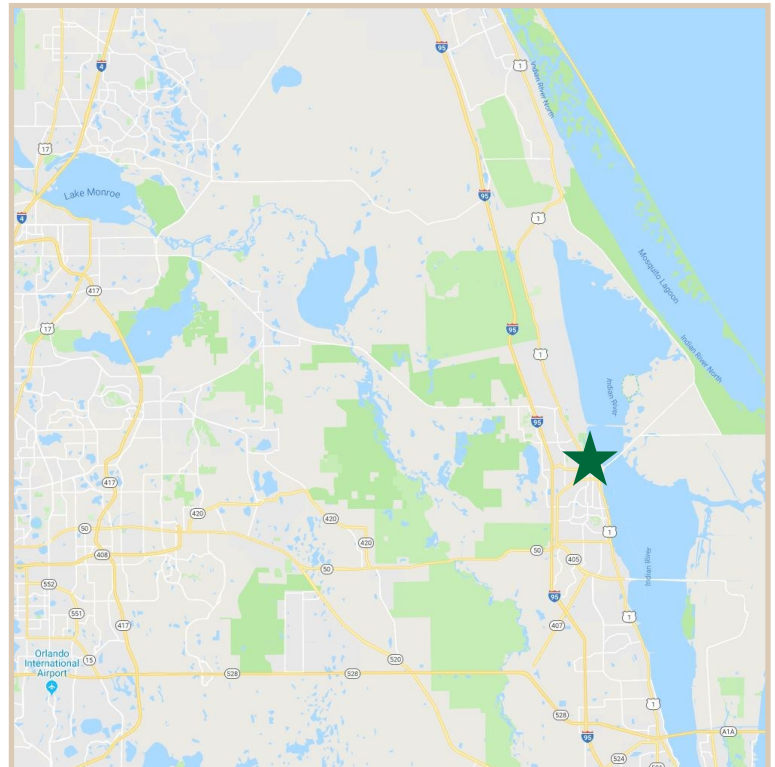
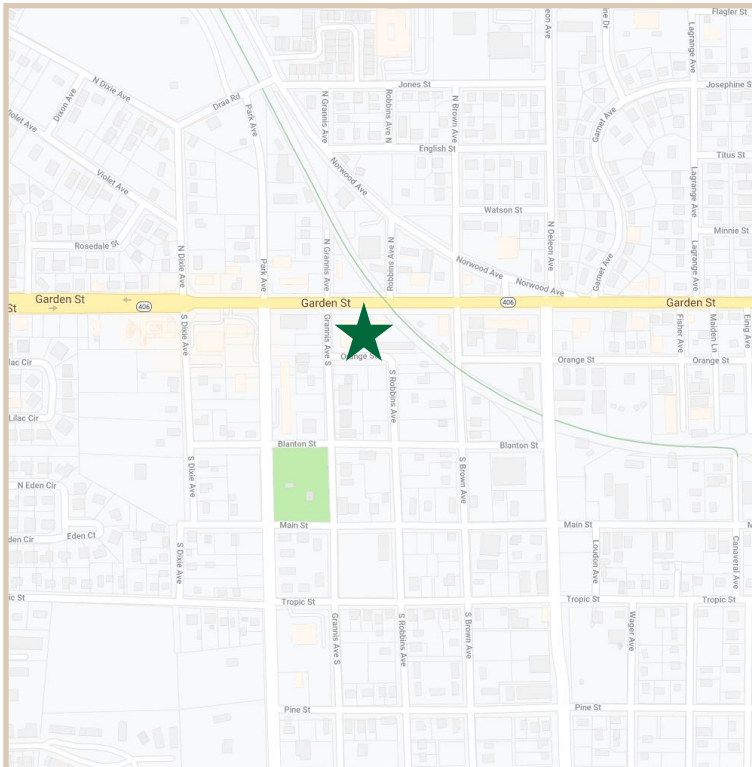
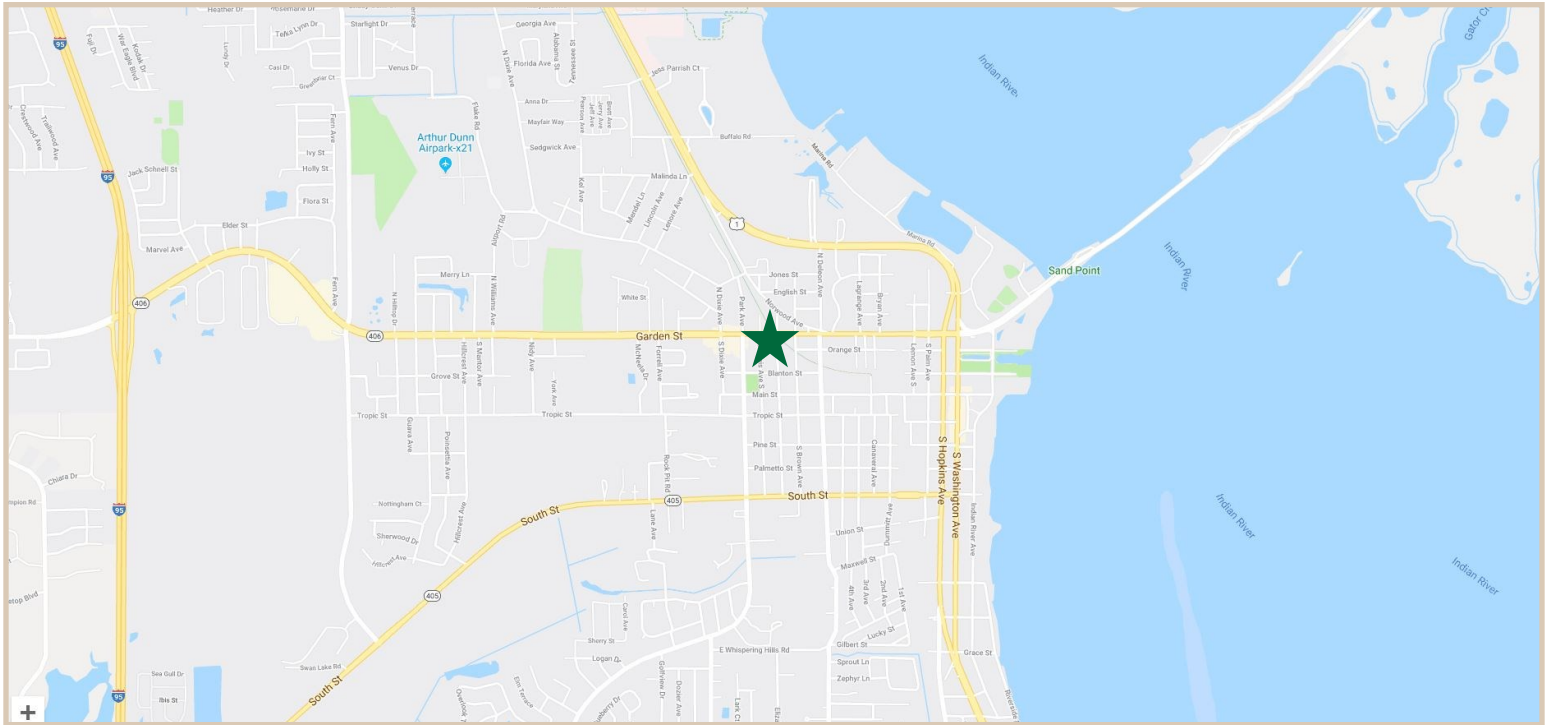
**CHARLES A. VON STEIN, INC.**  
Commercial Property Management,  
Sales & Leasing Specialists since 1963  
626 Old Dixie Highway SW  
Vero Beach, FL 32962  
[www.vscrc.com](http://www.vscrc.com)

**CONTACT INFO:**  
Brevard County: 321.725.1961  
Indian River County: 772.778.4885  
Fax: 772.778.4908  
Leasing: [leasing@vscrc.com](mailto:leasing@vscrc.com)

# LOCATION MAPS

Garden Street Office Centre

1225-1231 Garden Street, Titusville, FL, 32796



**CHARLES A. VON STEIN, INC.**  
*Commercial Property Management,  
 Sales & Leasing Specialists since 1963*  
 626 Old Dixie Highway SW  
 Vero Beach, FL 32962  
[www.vscrc.com](http://www.vscrc.com)

## CONTACT INFO:

Brevard County:  
 Indian River County:  
 Fax:  
 Leasing:

321.725.1961  
 772.778.4885  
 772.778.4908  
[leasing@vscrc.com](mailto:leasing@vscrc.com)

ALL INFORMATION FURNISHED REGARDING PROPERTY FOR SALE, RENTAL OR FINANCING SOURCES DEEMED RELIABLE, BUT NO WARRANTY OR REPRESENTATION IS MADE AS TO THE ACCURACY THEREOF AND SAME IS SUBMITTED SUBJECT TO ERRORS, OMISSIONS, CHANGE OF PRICE, RENTAL OR OTHER CONDITIONS, PRIOR SALE, LEASING OR FINANCING OR WITHDRAWAL WITHOUT NOTICE.



# ADDITIONAL PHOTOS

Garden Street Office Centre

1225-1231 Garden Street, Titusville, FL, 32796



**CHARLES A. VON STEIN, INC.**

*Commercial Property Management,  
Sales & Leasing Specialists since 1963*

626 Old Dixie Highway SW  
Vero Beach, FL 32962  
[www.vscrc.com](http://www.vscrc.com)

## CONTACT INFO:

Brevard County:	321.725.1961
Indian River County:	772.778.4885
Fax:	772.778.4908
Leasing:	<a href="mailto:leasing@vscrc.com">leasing@vscrc.com</a>

ALL INFORMATION FURNISHED REGARDING PROPERTY FOR SALE, RENTAL OR FINANCING SOURCES DEEMED RELIABLE, BUT NO WARRANTY OR REPRESENTATION IS MADE AS TO THE ACCURACY THEREOF AND SAME IS SUBMITTED SUBJECT TO ERRORS, OMISSIONS, CHANGE OF PRICE, RENTAL OR OTHER CONDITIONS, PRIOR SALE, LEASING OR FINANCING OR WITHDRAWAL WITHOUT NOTICE.