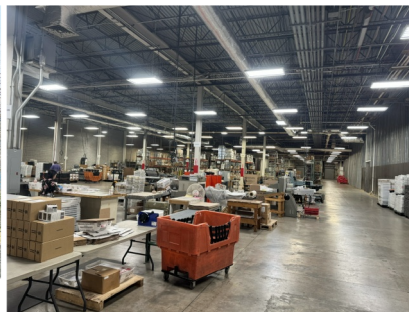


# 2750 Morris Road Lansdale, PA

## LEASE



Map data ©2024 Google Imagery ©2024 Airbus, Landsat / Copernicus, Maxar Technologies Report a map error



SIZE	TYPE
67,466 SF	INDUSTRIAL, FLEX

### DESCRIPTION

**Flex Sublease Listing**

**Well below market rate**

Located within Former Ford Facility

Fully Air-conditioned space

Available February 2025

Quality Flex-WH-MFG-Office

Call/Email for Tour/Info

Co-Listed with JG Realty Advisors LLC

### FEATURES

- 23' Ceilings and Racking
- Near Routes I476, Rt 202, 309 and 63
- Between KP, Plymouth Meeting, Philly and Lehigh Valley
- Newer Roof and Common area improvements
- Near Shopping, Dining and Services
- Heavy Utilities and Backup generators

**ITALIANO COMMERCIAL REAL ESTATE SERVICES, LLC**

**Steve@italianocommercial.com | 610 918 1990 | 302 307 5001**

This information has been obtained from sources believed reliable. We have not verified it and make no guarantee, warranty, or representation about it. Any projections, opinions, assumptions or estimates used are for example only and do not represent the current or future performance of the property. You and your advisors should conduct a careful, independent investigation of the property to determine to your satisfaction the suitability of the property for your needs.

