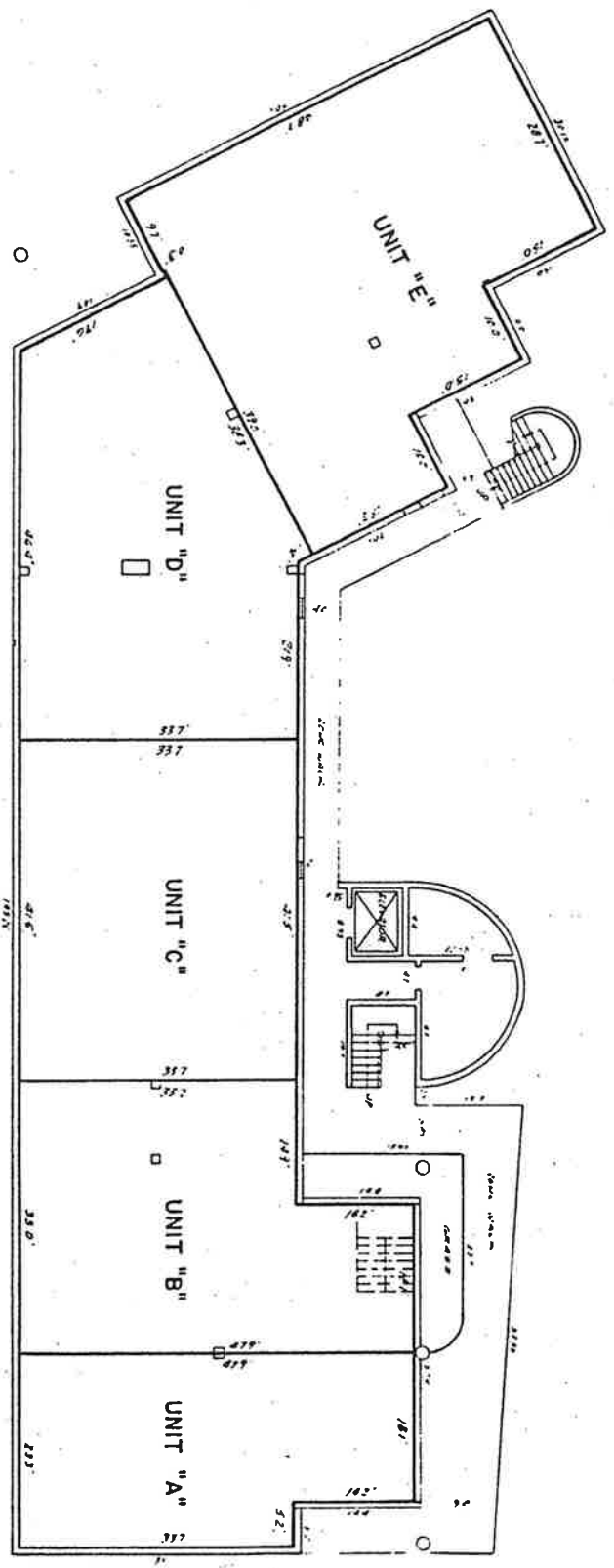


**EXHIBIT A**  
 TO THE DECLARATION OF CONDOMINIUM  
 of  
**PINE OAK CONDOMINIUM, AN  
 OFFICE CONDOMINIUM**

SURVEY, PLOT PLAN AND GRAPHIC DESCRIPTION OF IMPROVEMENTS



NOTES

1. All plans and elevations are computed from plans and data of O'Leary, Riddick, & Riddick, Inc., Architects and Surveyors, Inc. and all dimensions shown on the plans and elevations are shown by the surveyor and are not to be construed as a warranty of accuracy. Vertical datum is shown by the number on the floor plans and is shown thus: 100.00 = feet of each unit.

2. Dimensions set forth in the Declaration are measured over/under/within

**UPPER AND LOWER BOUNDARIES OF THE UNITS**  
 This floor contains the (S) Units having the following elevations:  
 Upper limit 100.32  
 Lower limit 100.00 (vertical)

**FIRST  
 FLOOR PLAN**  
 PINE OAK CONDOMINIUM,  
 OFFICE CONDOMINIUM

McLAUGHLIN ENGINEERING CO.	
450 N.E. 3RD AVENUE	
FORT LAUDERDALE, FLORIDA	
DATE	10/18/88
BY	W. W. W. JR.
SCALE	AS SHOWN
PROJECT NO.	100-0000