

LAND LEASE

0.36 - 1.78 ACRES

Sisters Commercial Land at High Visibility Intersection

NEC of E Barclay Dr. & N Locust St., Sisters, OR 97759



PROPERTY DETAILS

- Parcel 1:** 0.89 AC | \$82,000/Yr. NNN
- Parcel 2:** 0.36 AC | \$24,000/Yr. NNN
- Parcel 3:** 0.53 AC | \$50,000/Yr. NNN
- Zoning:** Downtown Commercial (DC)
- Date Avail.:** September 2026

HIGHLIGHTS

- Located at the high visibility intersection of Locust Street and Barclay Drive in Sisters
- DC zoning allows for a wide variety of uses, including medical, retail, and vacation rentals
- Easy access to Hwy 20
- Directly adjacent to Sisters Post Office and The Lodge Retirement Community
- Excellent opportunity to provide commercial services in a growing community

Russell Huntamer, CCIM | Eli Harrison, Broker

600 SW Columbia St., Ste. 6100 | Bend, OR 97702

541.383.2444 | www.CompassCommercial.com

COMPASS
COMMERCIAL

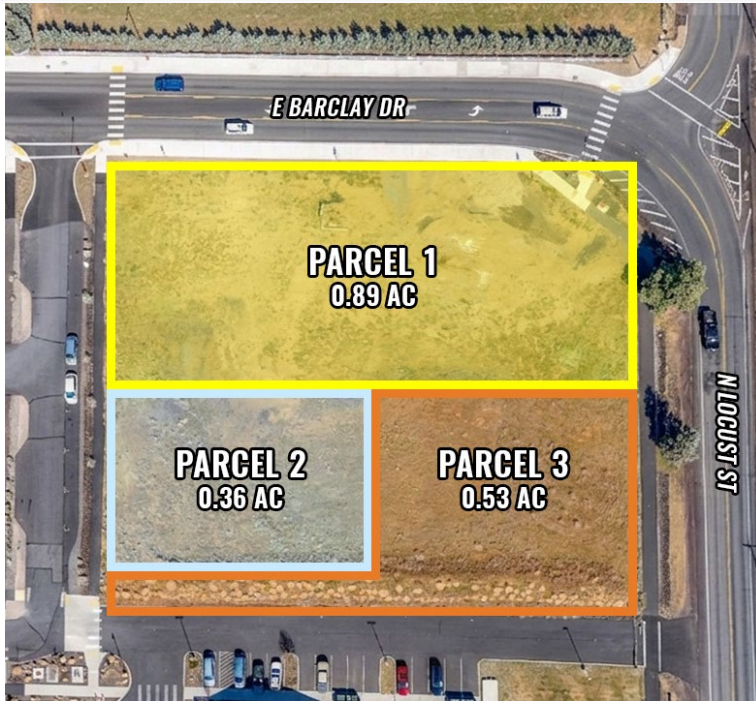
REAL
ESTATE
SERVICES

LAND LEASE

0.36 - 1.78 ACRES

Sisters Commercial Land at High Visibility Intersection

NEC of E Barclay Dr. & N Locust St., Sisters, OR 97759



Brokers are licensed in the state of Oregon. This information has been furnished from sources we deem reliable, but for which we assume no liability. This is an exclusive listing. The information contained herein is given in confidence with the understanding that all negotiations pertaining to this property be handled through Compass Commercial Real Estate Services. All measurements are approximate.



Russell Huntamer, CCIM
Partner, Principal Broker
Cell 541.419.2634
rh@compasscommercial.com



Eli Harrison
Broker
Cell 541.977.2890
eharrison@compasscommercial.com

COMPASS
COMMERCIAL

REAL ESTATE
SERVICES