



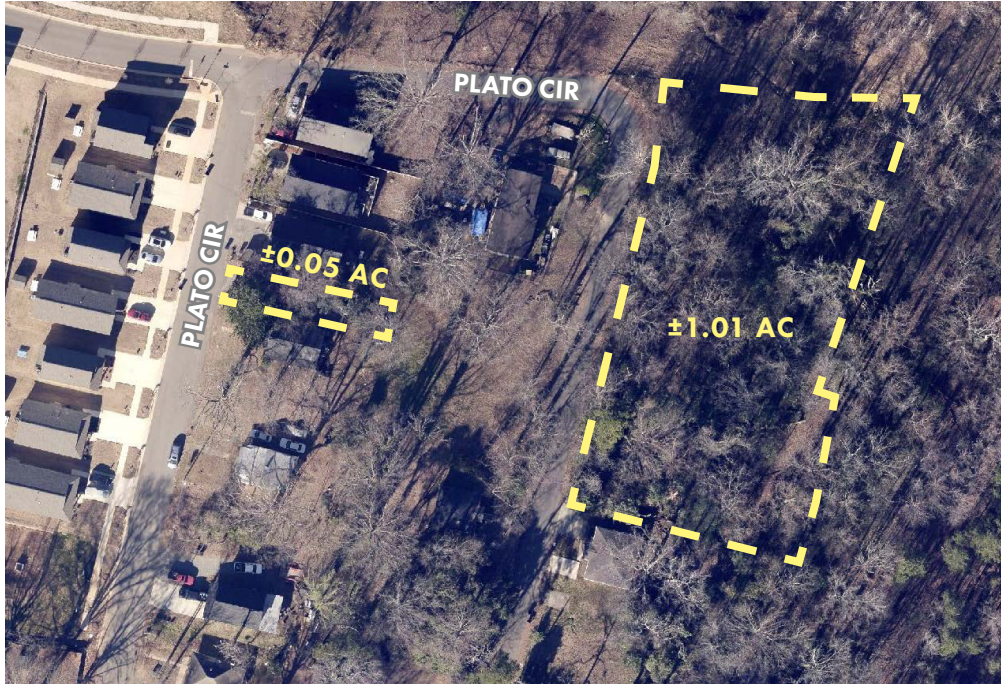
4032/4209 PLATO CIR & 2510 BELLAMY ST | CHARLOTTE, NC 28208

CONTACT JIM PLYLER

704.332.1193 | jplyler@piedmontproperties.com

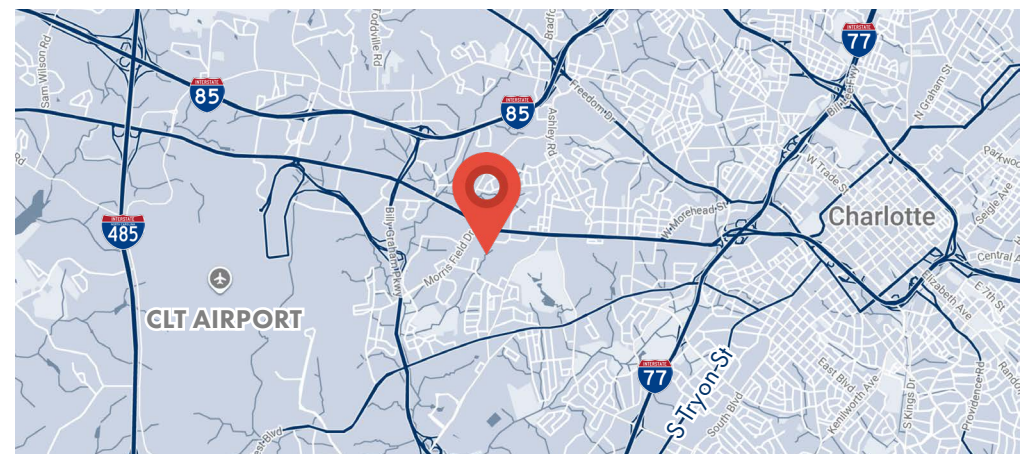
PROPERTY HIGHLIGHTS

4032/4209 PLATO CIR & 2510 BELLAMY ST | CHARLOTTE, NC 28208



FOR SALE: \$350,000

PARCELS MUST BE SOLD TOGETHER



PIEDMONT PROPERTIES
CORFAC INTERNATIONAL

JIM PLYLER
704.332.1193
jplyler@piedmontproperties.com