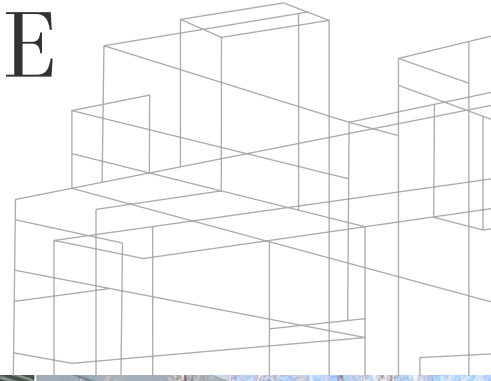


SOUTHWEST COMMERCE CENTER II

7525 COLBERT DRIVE, SUITES 105-106, RENO, NV 89511



±12,240

AVAILABLE SF

.33/3,000

SPRINKLER RATING

±3,375

SF OFFICE SPACE

1997

YEAR BUILT

200 AMPS, 277 volts, 3-phase power

23' clear height

1 dock high door

2 grade level doors

Great South Reno location

Excellent access to I-580 and McCarran loop

Professionally managed

Project is 1MM SF

MIKE NEVIS, SIOR, CCIM

775.470.8855

mike.nevis@kidder.com

LIC N° S.0061759

SHAWN JAENSON, SIOR

775.470.8865

shawn.jaenson@kidder.com

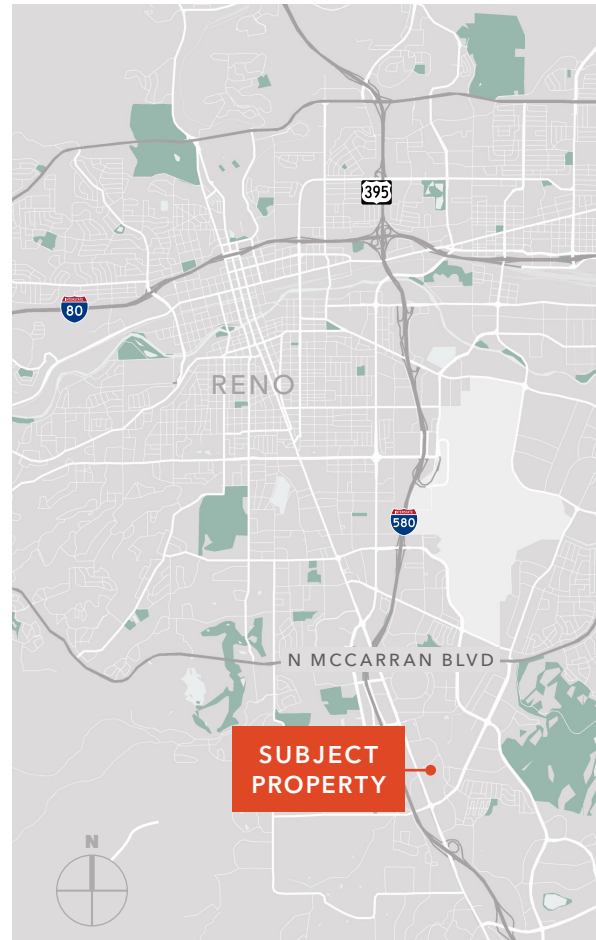
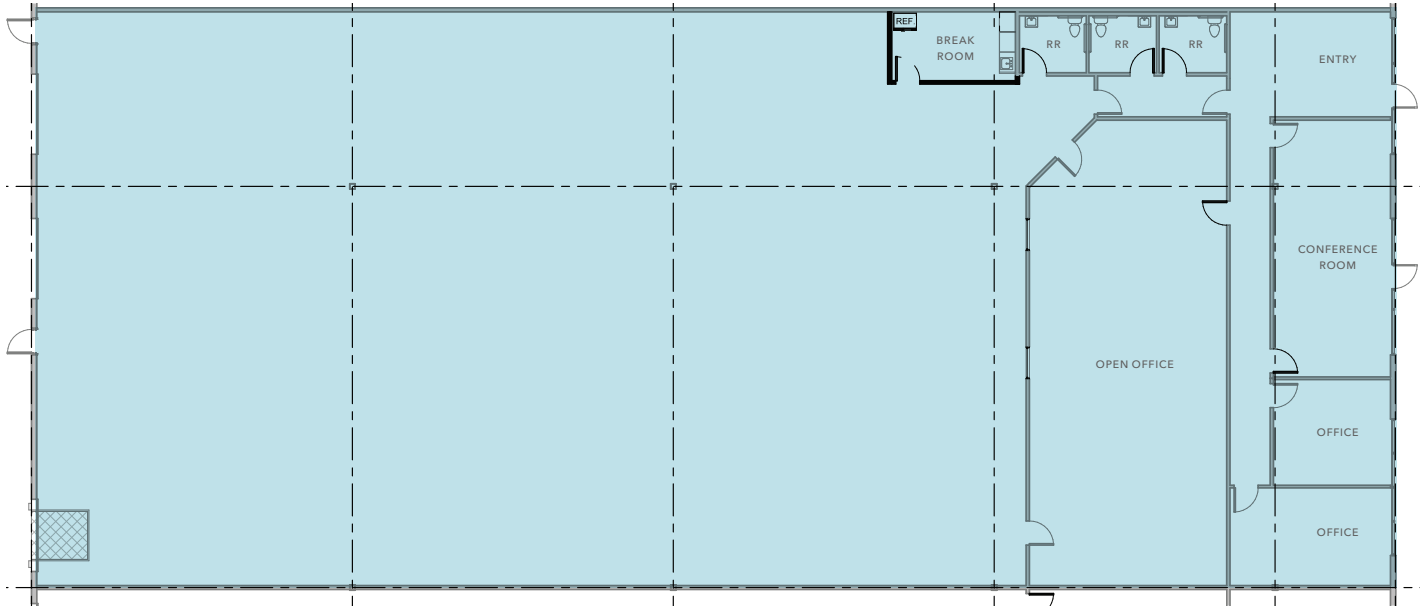
LIC N° S.0188002

KIDDER.COM

This information supplied herein is from sources we deem reliable. It is provided without any representation, warranty, or guarantee, expressed or implied as to its accuracy. Prospective Buyer or Tenant should conduct an independent investigation and verification of all matters deemed to be material, including, but not limited to, statements of income and expenses. Consult your attorney, accountant, or other professional advisor.



7525 COLBERT, SUITES 105 & 106



KIDDER.COM

This information supplied herein is from sources we deem reliable. It is provided without any representation, warranty, or guarantee, expressed or implied as to its accuracy. Prospective Buyer or Tenant should conduct an independent investigation and verification of all matters deemed to be material, including, but not limited to, statements of income and expenses. Consult your attorney, accountant, or other professional advisor.

