



131 E. HARGETT ST

RALEIGH, NC 27601

2,603 SQ. FT.

**FOR
LEASE**

LISTING BROKER:

WALLACE GREEN
919.630.0180 MOBILE
WGREEN@TRADEMARKPROPERTIES.COM

JENNETH MITCHELL
919.608.0938 MOBILE
JMITCHELL@TRADEMARKPROPERTIES.COM



SMOKY HOLLOW

PENDO HQ

STATE EMPLOYEE'S CREDIT UNION HQ

THE DILLON

NC STATE CAPITOL

PNC BANK HQ

SITE

MARBLES KIDS MUSEUM

RALEIGH CONVENTION CENTER

RED HAT HQ

MOORE SQUARE

1001 WADE AVENUE SUITE 300, RALEIGH, NC 27605
TRADEMARKPROPERTIES.COM | 919-782-5552

**131 E. HARGETT ST
RALEIGH, NC 27601**

Discover the charm awaiting you in this historic building. The ground floor presents an ideal prospect for a retail boutique, salon, and many other options while the second floor is perfectly suited for a solitary office tenant, featuring multiple offices of varying sizes.

PROPERTY HIGHLIGHTS

- » First Level: 1,210 SF
- » Second Level: 1,393 SF
- » Located in the Historic E. Hargett St.
- » Surrounded by Downtown Raleigh staples, Sitti, Beasley's Chicken + Honey, Marbles Kids Museum and IMAX, Moore Square, Watt's & Ward and more
- » Currently under construction with a targeted completion of the end of Q2' 24



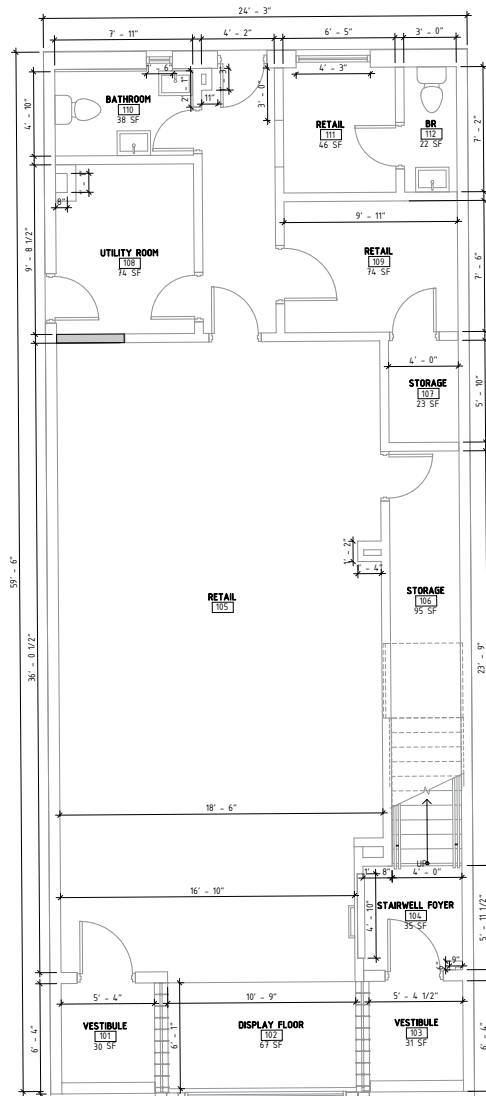
WALLACE GREEN
919.630.0180 (M)
WGREEN@TRADEMARKPROPERTIES.COM

JENNETH MITCHELL
919.608.0938 (M)
JMITCHELL@TRADEMARKPROPERTIES.COM

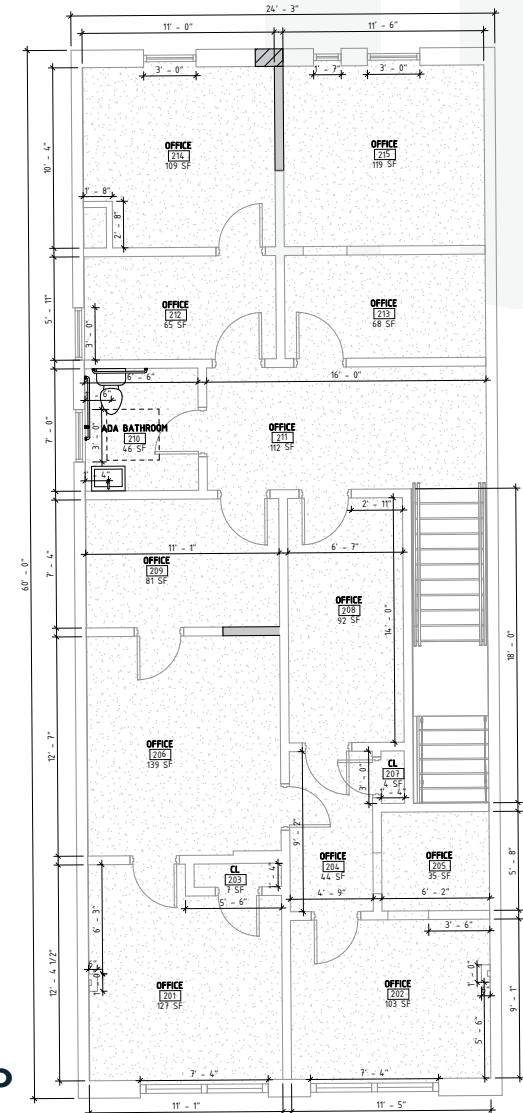
131 E. HARGETT ST
RALEIGH, NC 27601

FLOOR PLANS

FLOOR ONE



FLOOR TWO



WALLACE GREEN
919.630.0180 (M)
WGREEN@TRADEMARKPROPERTIES.COM

JENNETH MITCHELL
919.608.0938 (M)
JMITCHELL@TRADEMARKPROPERTIES.COM

131 E. HARGETT ST
RALEIGH, NC 27601

RALEIGH ACCOLADES

- **#1 Most Livable City**
- *Far & Wide (2023)*
- **Best Metro Areas for Growth**
- *American Growth Project Report (2023)*
- **#3 Hottest Job Markets in America**
- *Wall Street Journal (2022)*
- **#1 Best City for Working Women**
- *ApartmentList (2022)*
- **America's Top State for Business**
- *CNBC (2022)*
- **#1 America's Best Place to Live**
- *Bankrate (2021)*
- **#3 Among Safest Large Cities**
- *AdvidsorSmith (2021)*



WALLACE GREEN
919.630.0180 (M)
WGREEN@TRADEMARKPROPERTIES.COM

JENNETH MITCHELL
919.608.0938 (M)
JMITCHELL@TRADEMARKPROPERTIES.COM

LISTING BROKER:

WALLACE GREEN

919.630.0180 MOBILE
WGREEN@TRADEMARKPROPERTIES.COM

JENNETH MITCHELL

919.608.0938 MOBILE
JMITCHELL@TRADEMARKPROPERTIES.COM



THIS IS OUR TRADEMARK

THE INFORMATION CONTAINED HEREIN WAS OBTAINED FROM SOURCES BELIEVED RELIABLE; HOWEVER, TRADEMARK PROPERTIES MAKES NO GUARANTEES, WARRANTIES, OR REPRESENTATIONS AS TO THE COMPLETENESS OR ACCURACY THEREOF. THE PRESENTATION OF THIS PROPERTY IS SUBMITTED SUBJECT TO ERRORS, OMISSIONS, CHANGES OF PRICE OR CONDITIONS PRIOR TO SALE OR LEASE, OR WITHDRAWAL WITHOUT NOTICE.