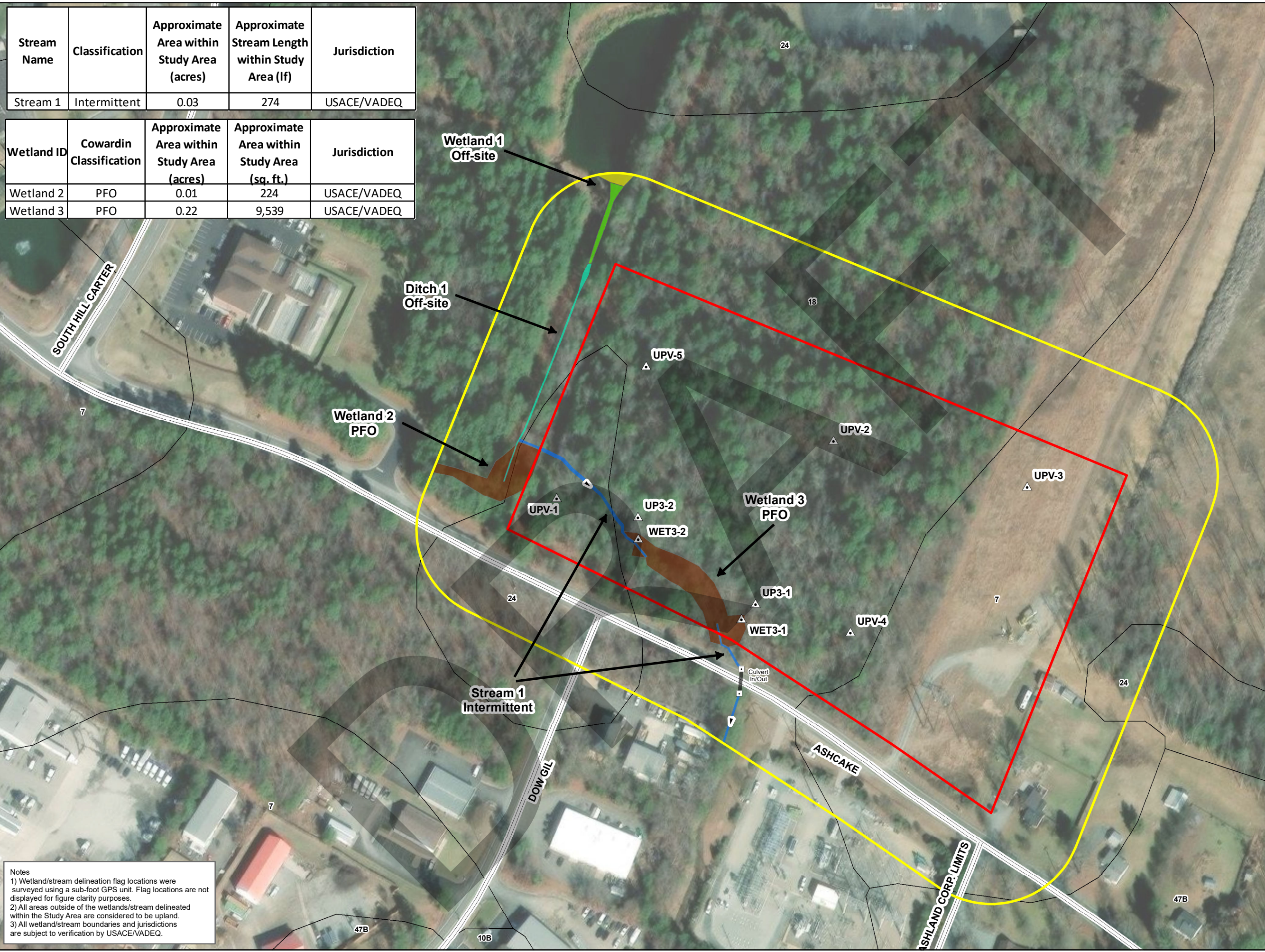


Path: B:\GLOBAL\Projects\Sugar Oak Realty\2251006 - 0 Ashcake Road Wetland Delin\06\_Drawings\Environmental\Wetland Delineation\GIS\Figure 5 - Wetland and Stream Delineation Survey.mxd  
 Creator: KW Reviewer: LD

Stream Name	Classification	Approximate Area within Study Area (acres)	Approximate Stream Length within Study Area (lf)	Jurisdiction
Stream 1	Intermittent	0.03	274	USACE/VADEQ

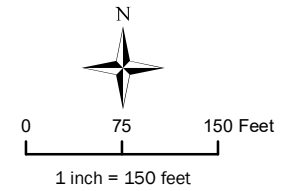
Wetland ID	Cowardin Classification	Approximate Area within Study Area (acres)	Approximate Area within Study Area (sq. ft.)	Jurisdiction
Wetland 2	PFO	0.01	224	USACE/VADEQ
Wetland 3	PFO	0.22	9,539	USACE/VADEQ



Sugar Oak Realty, LLC

**Wetland and Stream Delineation Report**

**Ashcake Road  
Ashland, Virginia**



- Legend**
- Study Area
  - 150-Foot Study Area Buffer
  - Data Point Location
  - Culvert
  - Forested Wetland (PFO)
  - Emergent Wetland (PEM)
  - Open Water (PuB)
  - Intermittent Stream
  - Concrete Ditch
  - Culvert Area
  - Road
  - Soil

Sources:  
 1. Study Area: Created by LaBella using information provided by the client.  
 2. Basemap: ESRI, DigitalGlobe, GeoEye, Earthstar, Geographics, CNES/Airbus DS, USDA, USGS/AeroGRID, IGN, and GIS User Community, 2022.  
 3. Road: VDOT, 2023.  
 4. Mapped soil data was obtained from the NRCSonline Soil Data (soildatamart.nrcs.usda.gov).

**Wetland and Stream Delineation Survey**

**FIGURE 5**

**Notes**  
 1) Wetland/stream delineation flag locations were surveyed using a sub-foot GPS unit. Flag locations are not displayed for figure clarity purposes.  
 2) All areas outside of the wetlands/stream delineated within the Study Area are considered to be upland.  
 3) All wetland/stream boundaries and jurisdictions are subject to verification by USACE/VADEQ.