



Investment  
Properties  
Corporation

**F O R S A L E**

# 3333 BUILDING

## PRIME NAPLES RETAIL/MEDICAL/SHOWROOM

📍 Located on 9th Street North just south of Anchor Rode Drive

3333 9th Street North | Naples, Florida 34103



*click here!*



Google  
Maps

**CONTACT (239) 261-3400**

**Tara Stokes, ext. 176**  
**tara@ipcnaples.com**

Investment Properties Corporation of Naples  
3838 Tamiami Trail North Suite 402  
Naples Florida 34103-3586

Tel: 239-261-3400 Fax: 249-261-7579 [www.ipcnaples.com](http://www.ipcnaples.com)

*Licensed Real Estate Broker*

The statement and figures presented herein, while not guaranteed, are secured from sources we believe authoritative. Subject to prior sale, lease, withdrawal and price change without notice.



**Investment  
Properties  
Corporation**

# 3333 BUILDING

📍 Located on 9th Street North just south of Anchor Rode Drive

3333 9th Street North | Naples, Florida 34103

## OFFERING SUMMARY

PRICE: \$10,000,000

BUILDING SIZE: 22,236 +/- SF

LAND SIZE: 1.5 ACRES

YEAR BUILT: 1987

R.E. TAXES (2023): \$46,515.18

ZONING: HC | Highway Commercial





**Investment  
Properties  
Corporation**

# 3333 BUILDING

📍 Located on 9th Street North just south of Anchor Rode Drive

3333 9th Street North | Naples, Florida 34103



**VIEW FACING NORTH**



**VIEW FACING SOUTH**



The statement and figures presented herein, while not guaranteed, are secured from sources we believe authoritative. Subject to prior sale, lease, withdrawal and price change without notice.



**Investment Properties Corporation**

# 3333 BUILDING

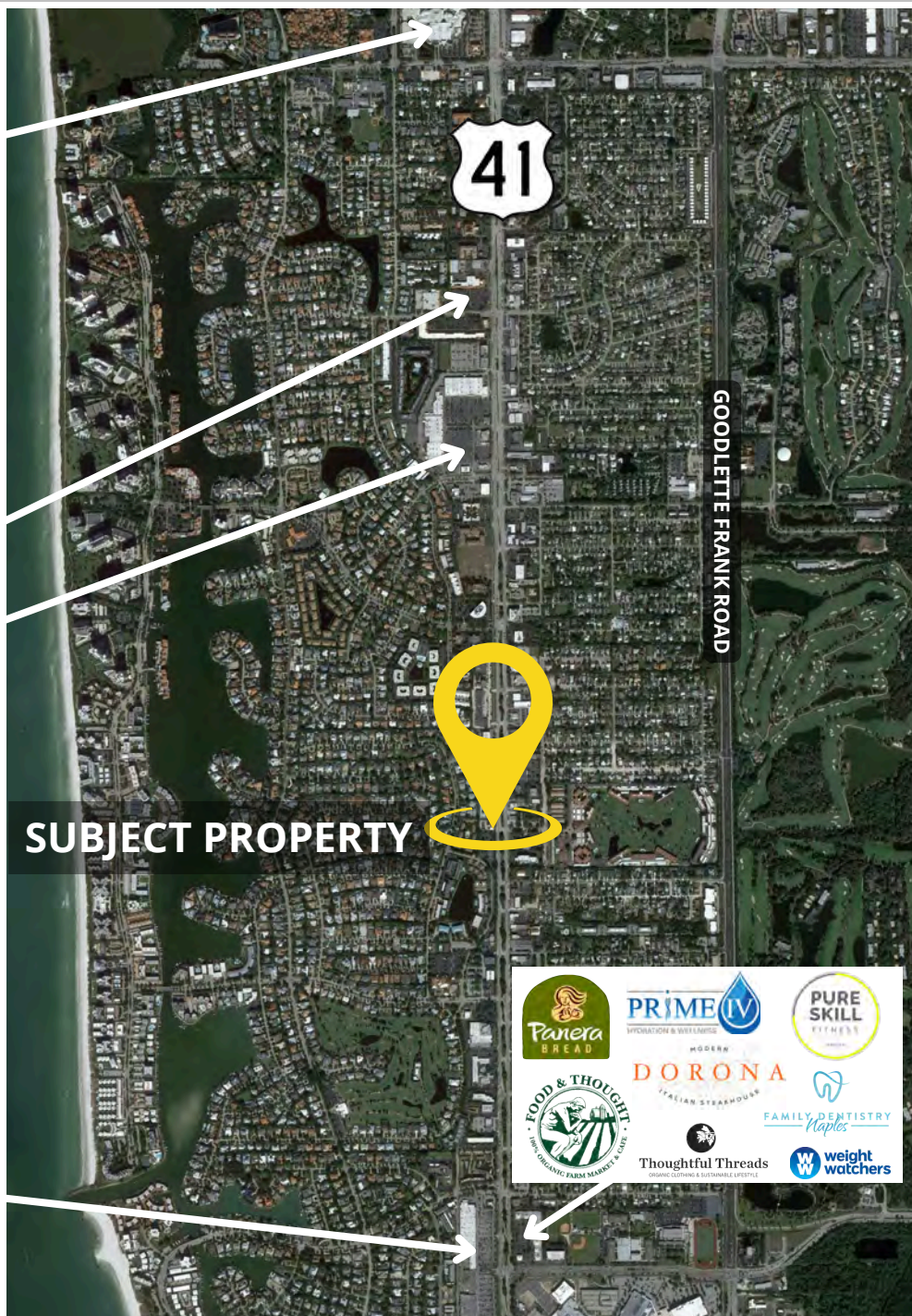
📍 Located on 9th Street North just south of Anchor Rode Drive

3333 9th Street North | Naples, Florida 34103

## WATERSIDESHOPS



## AMENITY RICH LOCATION FOR EMPLOYEES



**SUBJECT PROPERTY**



*click here!*



**Google Maps**

DEMOGRAPHICS 2024	1 mile	3 miles	5 miles
Est. Population	7,137	35,869	93,317
Est. Average H.H. Income	\$169,560	\$182,412	\$156,307
2023 Avg. Daily Traffic Count	49,489 vehicles per day on 9th Street North		