

# Development Land

1500-1506 East Grand Avenue  
Des Moines, Iowa  
[www.cbre.com/desmoines](http://www.cbre.com/desmoines)

## Site Size

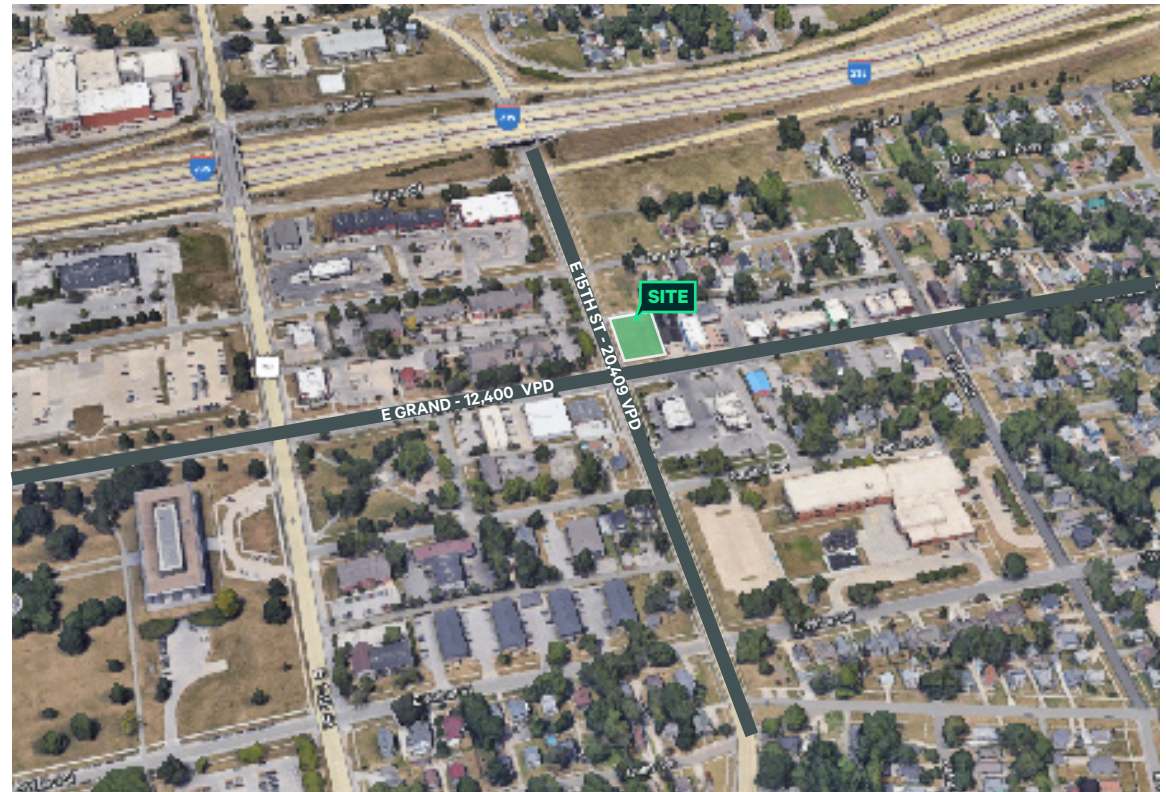
- + 14,992 square feet, or 0.34 acres
- + Approximately 100' x 150'

## Lease Rate

- + \$12,000/YR NNN

## Site Features

- + Zoning: NPC (Neighborhood Pedestrian Commercial District)
- + Corner lot
- + Close proximity to State Capitol Building
- + Located 4 blocks south of I-235 access



## Contact Us

### Bill Wright

Senior Vice President  
+1 515 210 3050  
[bill.wright2@cbre.com](mailto:bill.wright2@cbre.com)  
Licensed in the State of Iowa.

### Chris Pendroy, CCIM, SIOR

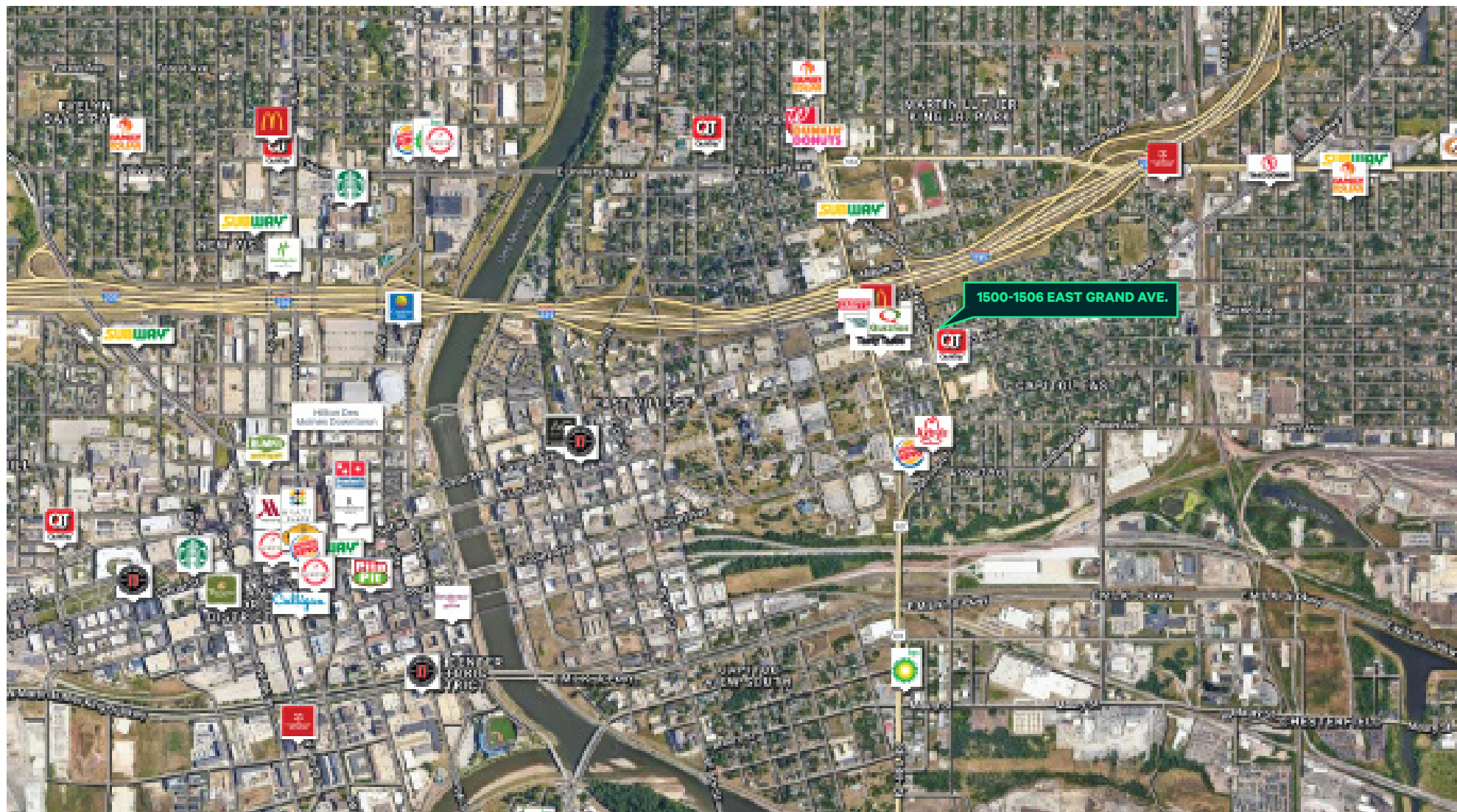
Senior Vice President  
+1 515 402 6600  
[chris.pendroy@cbre.com](mailto:chris.pendroy@cbre.com)  
Licensed in the State of Iowa.

### Grant Wright, CCIM

First Vice President  
+1 515 745 5113  
[grant.wright@cbre.com](mailto:grant.wright@cbre.com)  
Licensed in the State of Iowa.

### Dakota Little

Sales Associate  
+1 515 745 4378  
[dakota.little@cbre.com](mailto:dakota.little@cbre.com)  
Licensed in the State of Iowa.



© 2024 CBRE, Inc. All rights reserved. This information has been obtained from sources believed reliable, but has not been verified for accuracy or completeness. You should conduct a careful, independent investigation of the property and verify all information. Any reliance on this information is solely at your own risk. CBRE and the CBRE logo are service marks of CBRE, Inc. All other marks displayed on this document are the property of their respective owners, and the use of such logos does not imply any affiliation with or endorsement of CBRE. Photos herein are the property of their respective owners. Use of these images without the express written consent of the owner is prohibited.