

ROCKMART LOGISTICS CENTER

424,305 SF

CROSS-DOCK

AVAILABLE
FOR LEASE

▶ [WATCH OVERVIEW VIDEO](#)

STREAM

HUGHES
COMMERCIAL REAL ESTATE

CROW
HOLDINGS
DEVELOPMENT



135' - 185' TRUCK COURT

89 DOCK DOORS

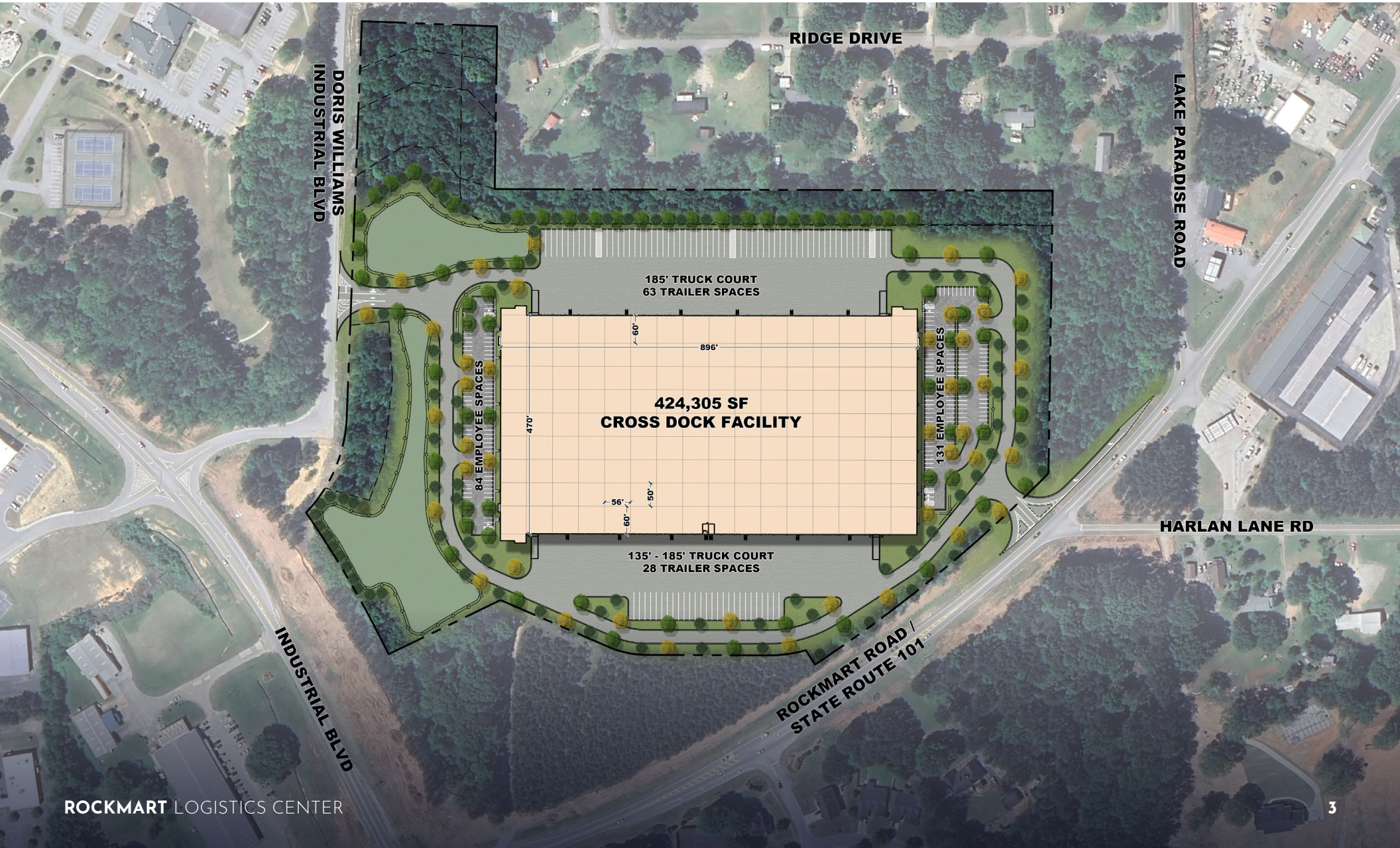
AVAILABLE
FOR LEASE

215 EMPLOYEE SPACES

91 TRAILER SPACES



SITE PLAN



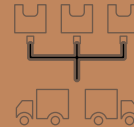
AVAILABILITY HIGHLIGHTS



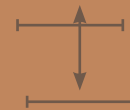
424,305 SF



BTS OFFICE



**CROSS-DOCK
CONFIGURATION**



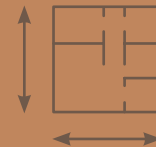
36' CLEAR HEIGHT



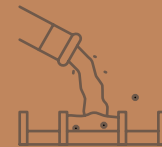
**89 9' x 10'
DOCK DOORS**



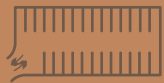
**4 DRIVE-IN
DOORS**



**470' DEPTH
X 896' WIDTH**



**7" 4,000 PSI
CONCRETE FLOOR**



**135' - 185'
FULL CONCRETE
TRUCK COURT**



**3,000 AMPS
POWER 277/480**



**ESFR FIRE
SUPPRESSION**



**WHITE, 60-MIL TPO ROOF -
R-20 IN WAREHOUSE,
R-25 IN OFFICE**

ROCKMART
LOGISTICS
CENTER

GDOT IMPROVEMENTS
IN PROGRESS TO PROVIDE
IMPROVED ACCESS TO I-20 WEST
AND ENHANCE REGIONAL
CONNECTIVITY

W Hwy 78

78

78

EXIT 24
4 MINUTES • 2.0 MILES



EXIT 26
7 MINUTES • 4.5 MILES

20

PILOT TRAVEL CENTER



ROCKMART LOGISTICS CENTER

ROCKMART
LOGISTICS
CENTER

I-20

4 MINUTES

2.0 MILES

I-285

26 MINUTES

28 MILES

AIRPORT

40 MINUTES

44 MILES

IN THE HEART OF VILLA RICA, GA



Villa Rica has captured the attention of businesses and developers nationwide. Leading companies continue to invest in this dynamic community, drawn by its prime location, modern industrial developments, and thriving business environment. The city offers access to over 70,000 workers in transportation, warehousing, and manufacturing within a 45-minute drive, supported by Georgia's top-ranked Quick Start training program. This deep labor pool, combined with strategic infrastructure, attractive incentives, and a mix of established and emerging business hubs, positions Villa Rica for long-term growth. With ongoing investments in quality of life and regional connectivity, Villa Rica continues to solidify its reputation as a premier destination for commerce, logistics, and retail.





ROCKMART LOGISTICS CENTER

BRAD BAYS, SIOR
MANAGING DIRECTOR
BRAD.BAYS@STREAMREALTY.COM
404.579.7761

BEAU ACUFF, SIOR
EXECUTIVE VICE PRESIDENT
BEAU.ACUFF@STREAMREALTY.COM
404.893.9833

STUART BRACEY
PRINCIPAL
SB@BRIGHTON-PROPERTIES.COM
404.664.5321

MASON MARSTELLER
PRINCIPAL
MASON@HUGHES-CRE.COM
404.790.9615


STREAM

HUGHES
COMMERCIAL REAL ESTATE

Crow
HOLDINGS
DEVELOPMENT