

6120 LINSDALE STREET
DETROIT, MICHIGAN



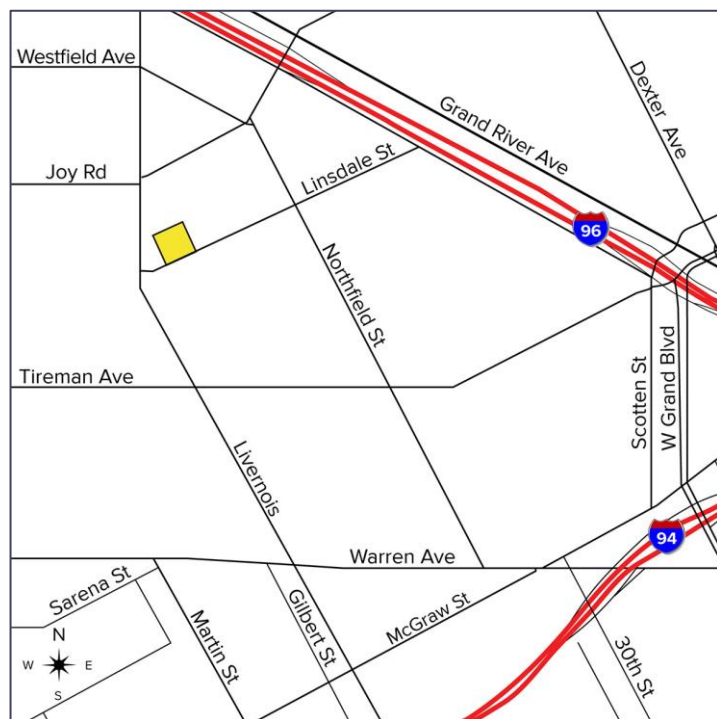
**SIGNATURE
ASSOCIATES**
KNOW SIGNATURE | KNOW RESULTS

INDUSTRIAL FOR SALE OR LEASE
68,216 Square Feet Available



PROPERTY FEATURES

- 68,216 square feet available
- Office area to suit
- 18' – 24' clear height
- (4) 12' x 14' grade level doors
- (6) truckwells
- Building secured with electrical fence
- Building lends itself to many potential uses
- Located on 2.876 acres
- Lease Rate: \$3.00/sq. ft. NNN
- Sale Price: \$1,895,000 (\$27.78/sq. ft.)



For more information, please contact:

JOE STACK
(248) 359 0615

jstack@signatureassociates.com

CHRIS MONSOUR
(248) 948 0107

cmonsour@signatureassociates.com

SIGNATURE ASSOCIATES
One Towne Square, Suite 1200
Southfield, MI 48076
www.signatureassociates.com

Information is subject to verification and no liability for errors or omissions is assumed. Price is subject to change and listing withdrawal.

6120 Linsdale Street – Detroit, Michigan

Industrial For Sale or Lease

68,216
Square Feet
AVAILABLE

Exterior Photos



For more information, please contact:

JOE STACK
(248) 359 0615

jstack@signatureassociates.com

CHRIS MONSOUR
(248) 948 0107

cmonsour@signatureassociates.com

SIGNATURE ASSOCIATES
One Towne Square, Suite 1200
Southfield, MI 48076
www.signatureassociates.com

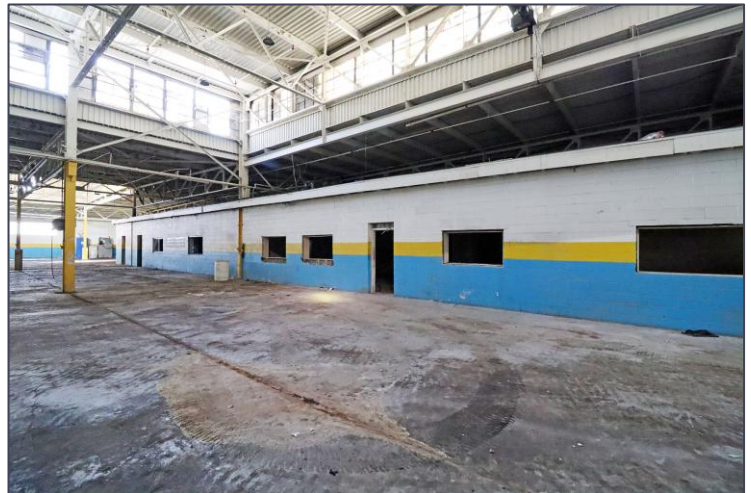
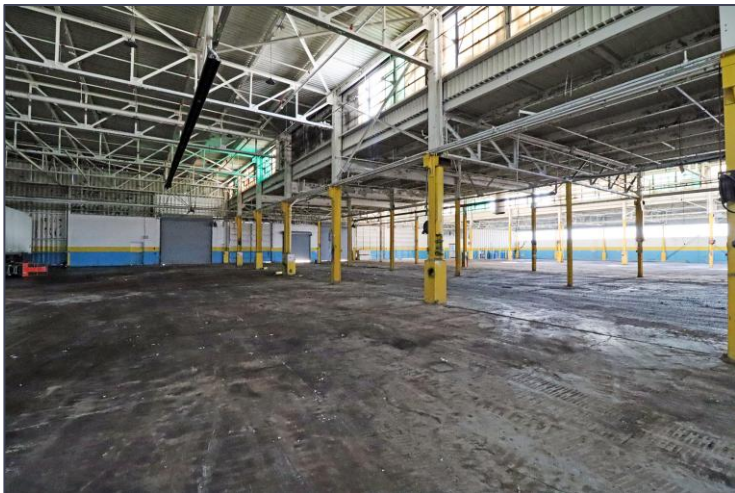
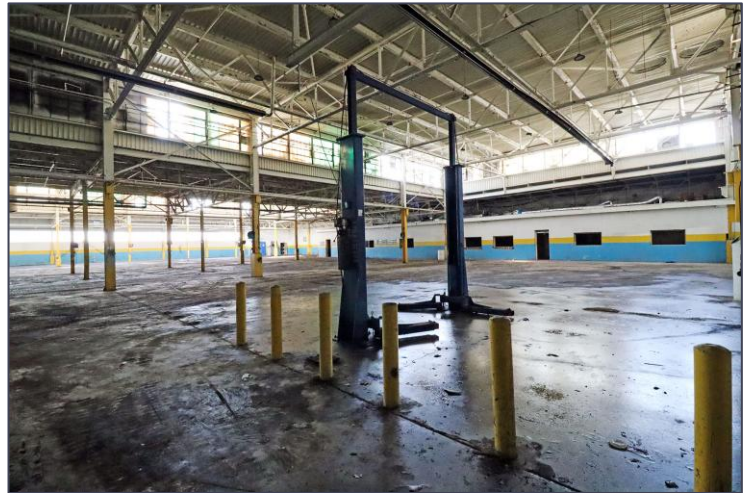
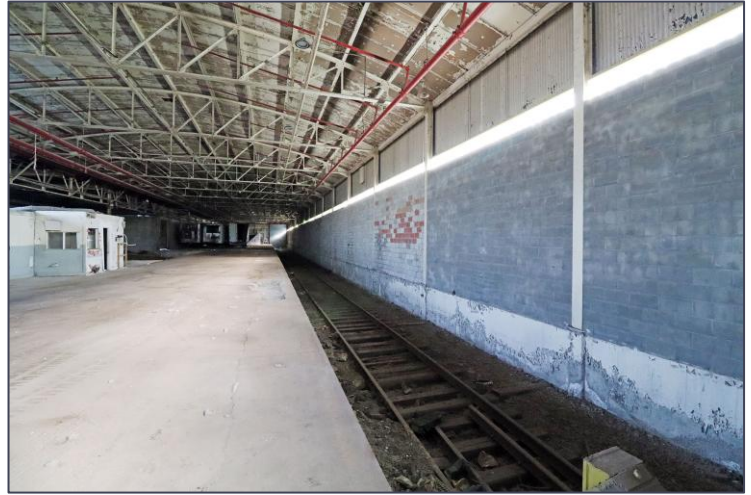
Information is subject to verification and no liability for errors or omissions is assumed. Price is subject to change and listing withdrawal.

6120 Linsdale Street – Detroit, Michigan

Industrial For Sale or Lease

68,216
Square Feet
AVAILABLE

Interior Photos



For more information, please contact:

JOE STACK
(248) 359 0615

jstack@signatureassociates.com

CHRIS MONSOUR
(248) 948 0107

cmonsour@signatureassociates.com

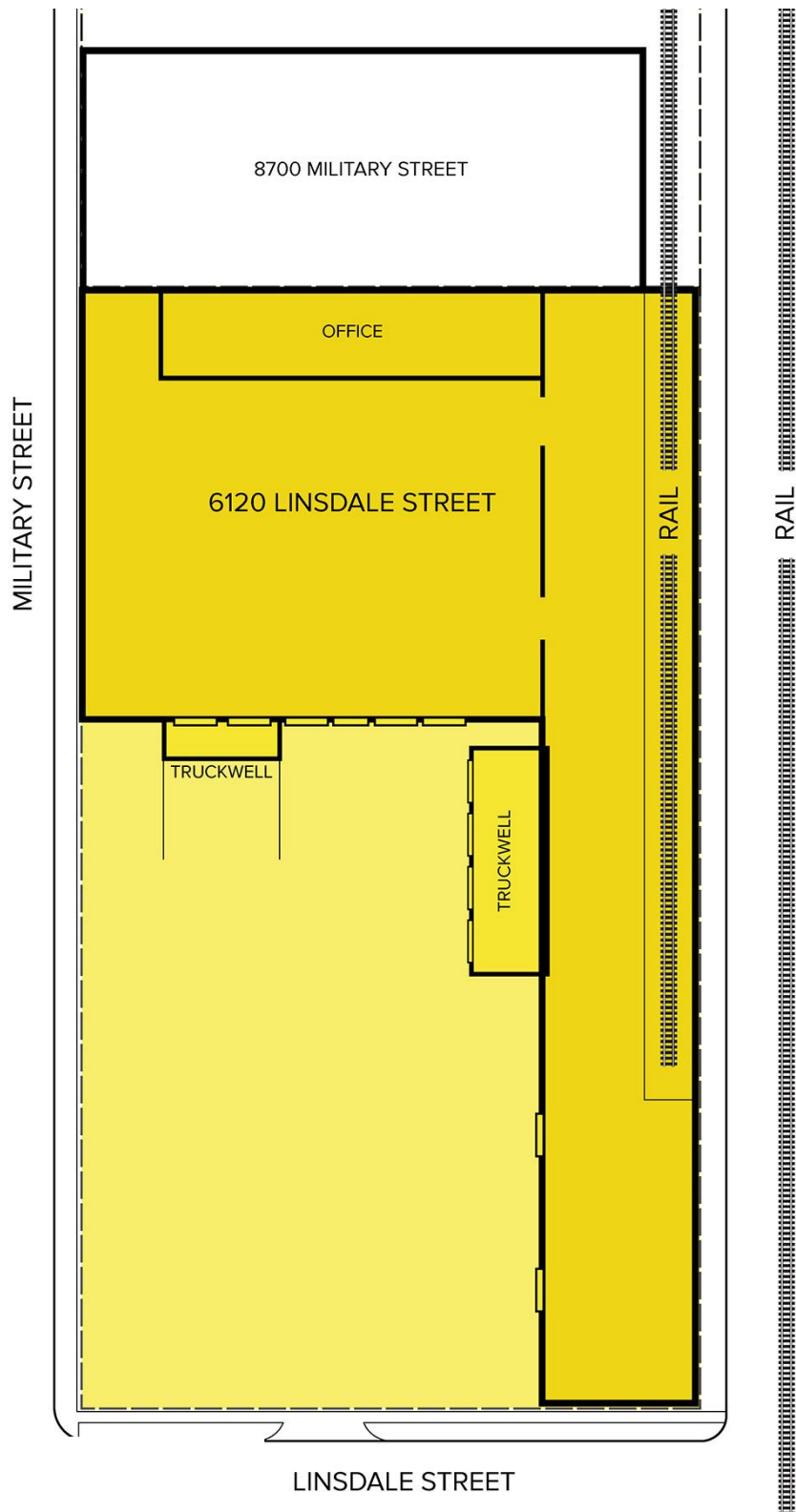
SIGNATURE ASSOCIATES
One Towne Square, Suite 1200
Southfield, MI 48076
www.signatureassociates.com

Information is subject to verification and no liability for errors or omissions is assumed. Price is subject to change and listing withdrawal.

6120 Linsdale Street – Detroit, Michigan
Industrial For Sale or Lease

68,216
Square Feet
AVAILABLE

Site Plan



For more information, please contact:

JOE STACK
(248) 359 0615
jstack@signatureassociates.com

CHRIS MONSOUR
(248) 948 0107
cmonsour@signatureassociates.com

SIGNATURE ASSOCIATES
One Towne Square, Suite 1200
Southfield, MI 48076
www.signatureassociates.com

Information is subject to verification and no liability for errors or omissions is assumed. Price is subject to change and listing withdrawal.

6120 Linsdale Street – Detroit, Michigan

Industrial For Sale or Lease

68,216
Square Feet
AVAILABLE

Aerial



For more information, please contact:

JOE STACK
(248) 359 0615

jstack@signatureassociates.com

CHRIS MONSOUR
(248) 948 0107

cmonsour@signatureassociates.com

SIGNATURE ASSOCIATES
One Towne Square, Suite 1200
Southfield, MI 48076
www.signatureassociates.com

Information is subject to verification and no liability for errors or omissions is assumed. Price is subject to change and listing withdrawal.