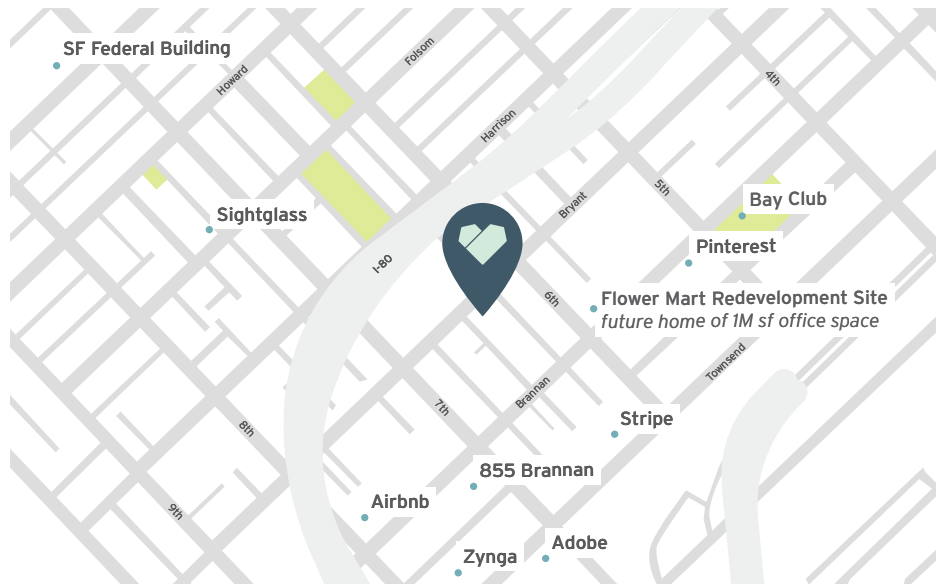
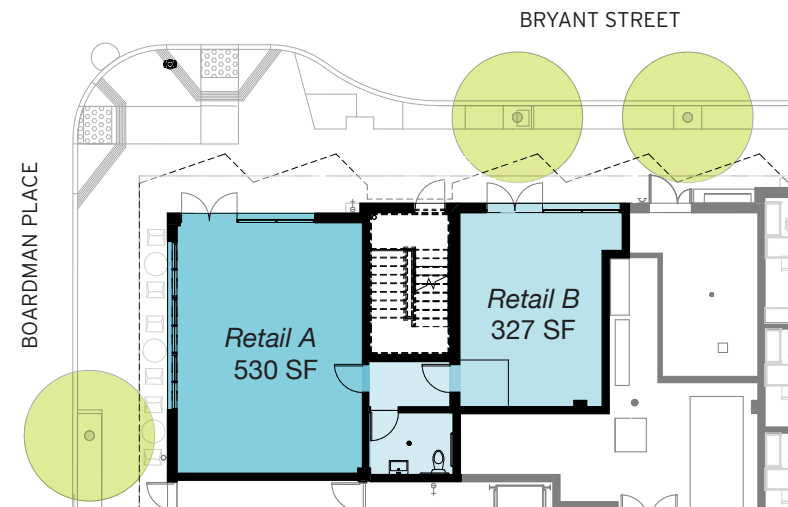


# 833 Bryant Retail Space

Below 145 Studio Apartments



**833 Bryant is a new construction, mixed-use development located in the SOMA neighborhood in San Francisco and features two commercial spaces at the corner of Bryant Street and Boardman Place.** The spaces may be leased separately or as one combined area. This is a terrific location for your business in a neighborhood with daytime, evening, and weekend customers!



**Retail Space A: 530 sf**  
*Shared bathroom with Space B*

**Retail Space B: 327 sf**  
*Shared bathroom with Space A*

- Tenant Improvement (TI) allowance provided
- No Type 1 or 2 hood
- NNN Rent

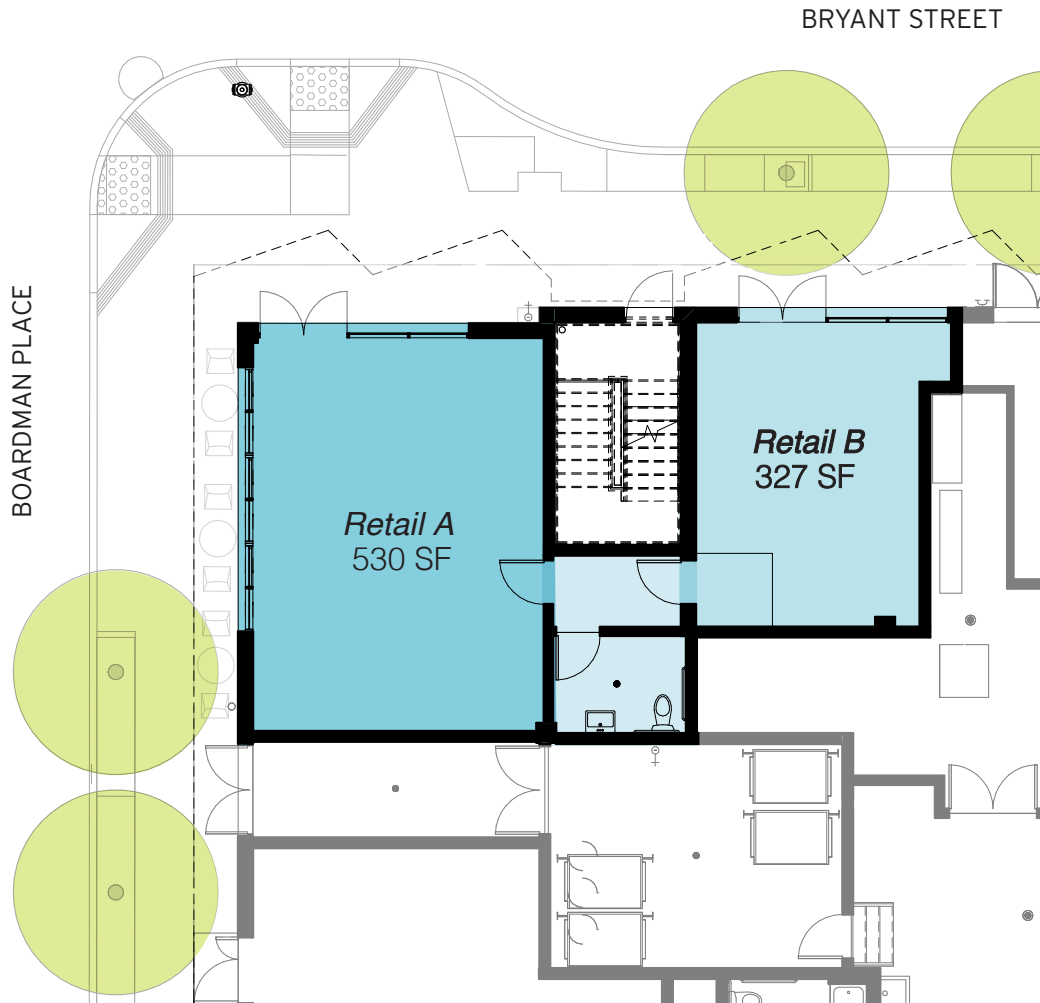
**For more information, please visit:**  
[www.833bryant.org/retail](http://www.833bryant.org/retail)

**Or contact:**

**Julia Katz**  
Mercy Housing Commercial Developer  
[Julia.Katz@MercyHousing.org](mailto:Julia.Katz@MercyHousing.org)  
415.915.6232

# 833 Bryant Retail Space

Below 145 Studio Apartments



**Retail Space A: 530 sf**  
*Shared bathroom with Space B*

**Retail Space B: 327 sf**  
*Shared bathroom with Space A*

- Tenant Improvement (TI) allowance provided
- No Type 1 or 2 hood
- NNN Rent

**For more information, please visit:**

**[www.833bryant.org/retail](http://www.833bryant.org/retail)**

**Or contact:**

**Julia Katz**  
Mercy Housing  
Commercial Developer  
[Julia.Katz@MercyHousing.org](mailto:Julia.Katz@MercyHousing.org)  
415.915.6232