



INDUSTRIAL FOR LEASE

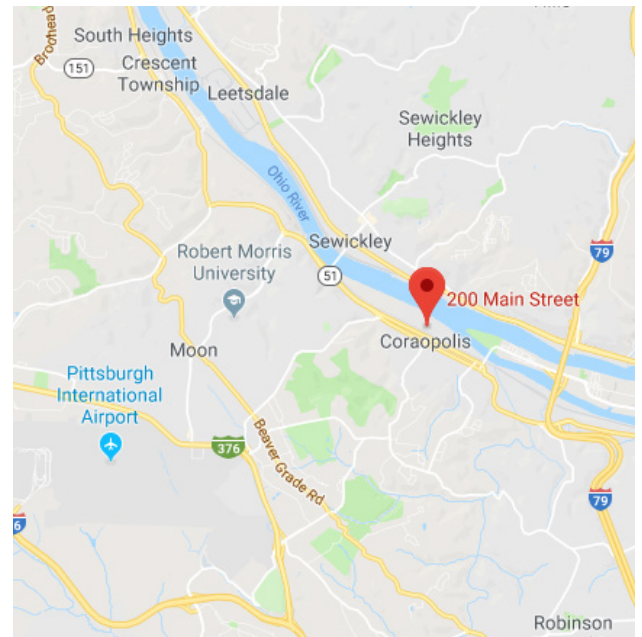
200 MAIN STREET

CORAOPOLIS, PA 15108



BUILDING FEATURES

- 66,284 SF building zoned Heavy Industrial
- 6,000 SF currently available
- Land area: 2.71 acres that includes:
 - 0.54 acre, fenced-in parking lot/outdoor storage
 - 0.2 acre parking/truck staging
- Ceiling height: 16'-22' clear
- Sprinklered



JOHN LISOWSKI
(412) 391-1745
john.lisowski@cushwake.com
Lic. # RS223178L

EVAN CICIRELLO
(412) 697 6558
evan.cicirello@cushwake.com
Lic. # RS319106

CUSHMAN & WAKEFIELD
310 Grant Street, Suite 1825, Pittsburgh, PA
412 391 2600
cushmanwakefield.com



INDUSTRIAL FOR LEASE

200 MAIN STREET

CORAOPOLIS, PA 15108



JOHN LISOWSKI
(412) 391-1745
john.lisowski@cushwake.com
Lic. # RS223178L

EVAN CICIRELLO
(412) 697 6558
evan.cicirello@cushwake.com
Lic. # RS319106

CUSHMAN & WAKEFIELD
310 Grant Street, Suite 1825, Pittsburgh, PA
412 391 2600
cushmanwakefield.com

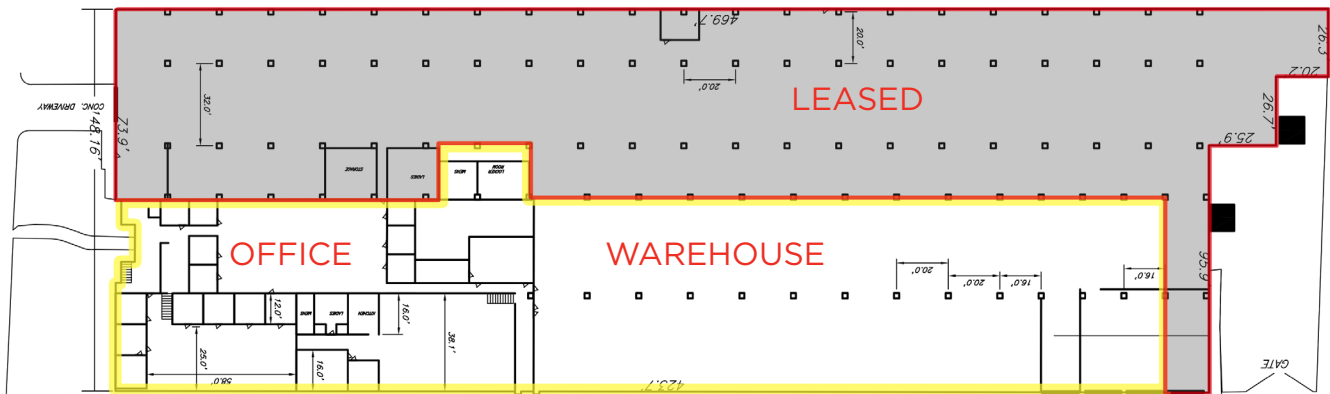
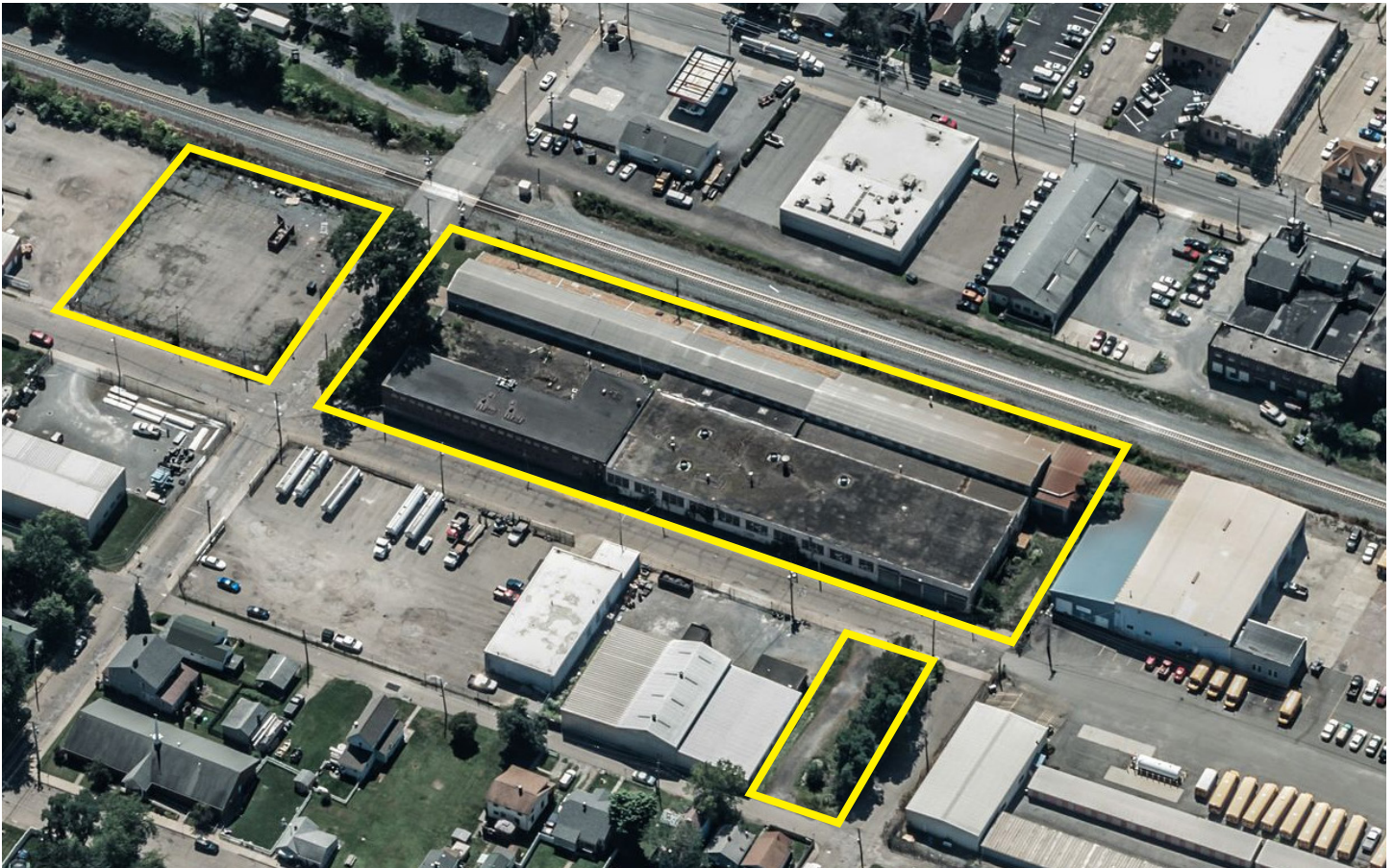
©2022 Cushman & Wakefield. All rights reserved. The information contained in this communication is strictly confidential. This information has been obtained from sources believed to be reliable but has not been verified. NO WARRANTY OR REPRESENTATION, EXPRESS OR IMPLIED, IS MADE AS TO THE CONDITION OF THE PROPERTY (OR PROPERTIES) REFERENCED HEREIN OR AS TO THE ACCURACY OR COMPLETENESS OF THE INFORMATION CONTAINED HEREIN, AND SAME IS SUBMITTED SUBJECT TO ERRORS, OMISSIONS, CHANGE OF PRICE, RENTAL OR OTHER CONDITIONS, WITHDRAWAL WITHOUT NOTICE, AND TO ANY SPECIAL LISTING CONDITIONS IMPOSED BY THE PROPERTY OWNER(S). ANY PROJECTIONS, OPINIONS OR ESTIMATES ARE SUBJECT TO UNCERTAINTY AND DO NOT SIGNIFY CURRENT OR FUTURE PROPERTY PERFORMANCE.



INDUSTRIAL FOR LEASE

200 MAIN STREET

CORAOPOLIS, PA 15108



JOHN LISOWSKI
(412) 391-1745
john.lisowski@cushwake.com
Lic. # RS223178L

EVAN CICIRELLO
(412) 697 6558
evan.cicirello@cushwake.com
Lic. # RS319106

CUSHMAN & WAKEFIELD
310 Grant Street, Suite 1825, Pittsburgh, PA
412 391 2600
cushmanwakefield.com

©2022 Cushman & Wakefield. All rights reserved. The information contained in this communication is strictly confidential. This information has been obtained from sources believed to be reliable but has not been verified. NO WARRANTY OR REPRESENTATION, EXPRESS OR IMPLIED, IS MADE AS TO THE CONDITION OF THE PROPERTY (OR PROPERTIES) REFERENCED HEREIN OR AS TO THE ACCURACY OR COMPLETENESS OF THE INFORMATION CONTAINED HEREIN, AND SAME IS SUBMITTED SUBJECT TO ERRORS, OMISSIONS, CHANGE OF PRICE, RENTAL OR OTHER CONDITIONS, WITHDRAWAL WITHOUT NOTICE, AND TO ANY SPECIAL LISTING CONDITIONS IMPOSED BY THE PROPERTY OWNER(S). ANY PROJECTIONS, OPINIONS OR ESTIMATES ARE SUBJECT TO UNCERTAINTY AND DO NOT SIGNIFY CURRENT OR FUTURE PROPERTY PERFORMANCE.