

# MID SOUTH INDUSTRIAL PARK

## +/- 700,000 SF For Lease

### Manufacturing/Warehouse Space

515 Mid South Dr., Salisbury, NC  
**AVAILABLE IMMEDIATELY**



#### PARK FEATURES

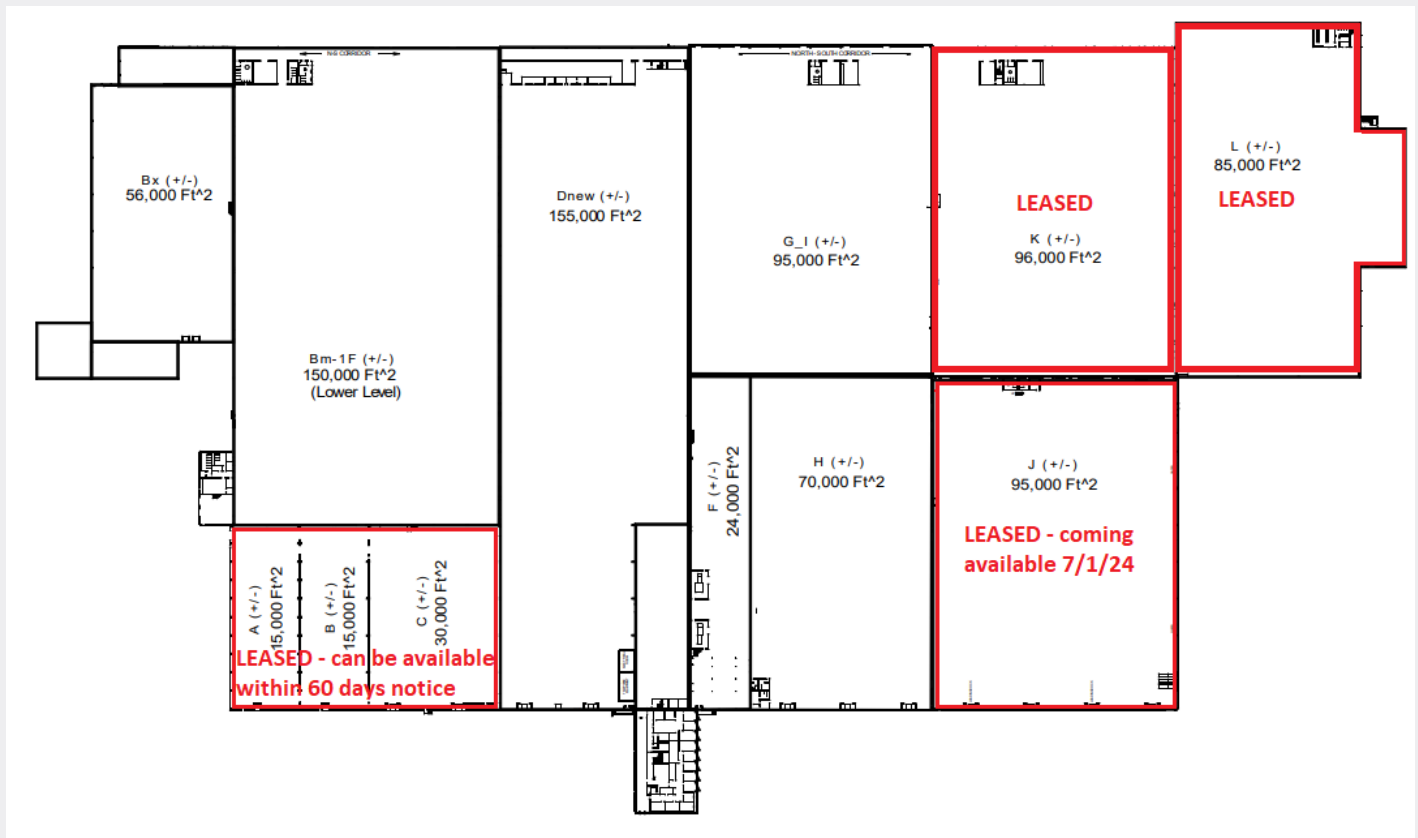
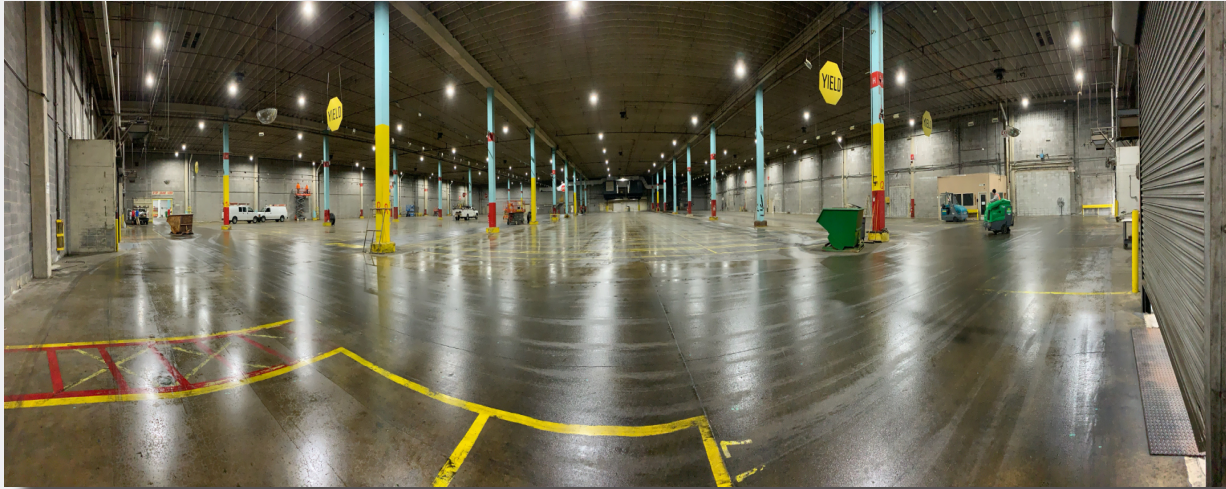
- +/- 1,100,000 Square Feet total with +/- 700,000 Square Feet Available for Lease
- +/- 537 Acres of Land
- Sites Available for Sale or Build to Suit
- Site Wide Redevelopment including New Roof and Infrastructure Improvements Completed in 2023
- Secure Site with 24/7 Manned Guard House and Site Fencing
- Rail Provided by Norfolk Southern with Multiple Spurs
- Heavy Power from Duke Energy
- Multiple Gas Lines via Piedmont Natural Gas
- 2.3 MGD Waster Water Treatment Plant
- Interstate Access: I-85 10 Miles, I-40 12 Miles, I-77 14 Miles
- 38 Miles to Charlotte Douglas International Airport

Contact: Houston Roberts • [houston@forsiteinc.com](mailto:houston@forsiteinc.com) • 704-361-0129



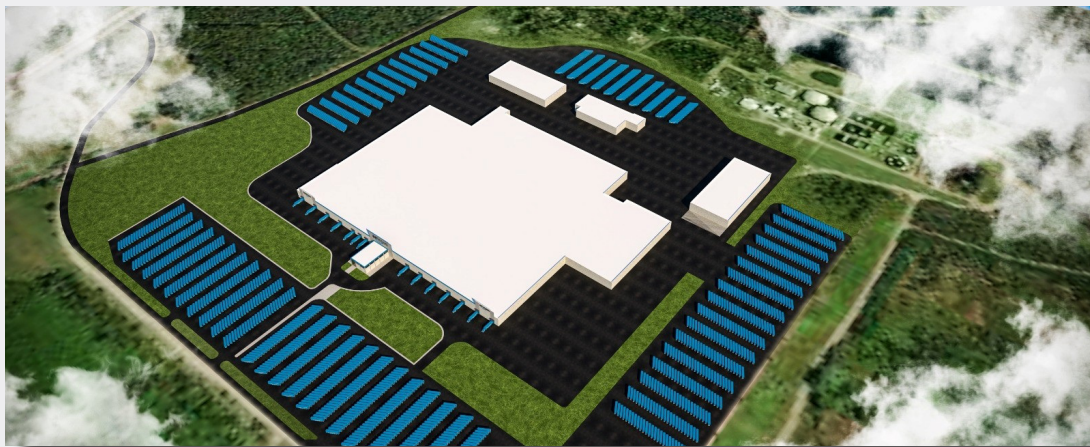
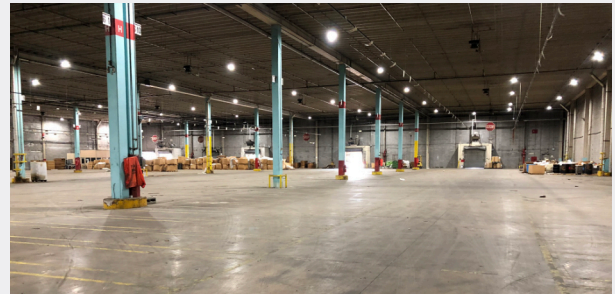
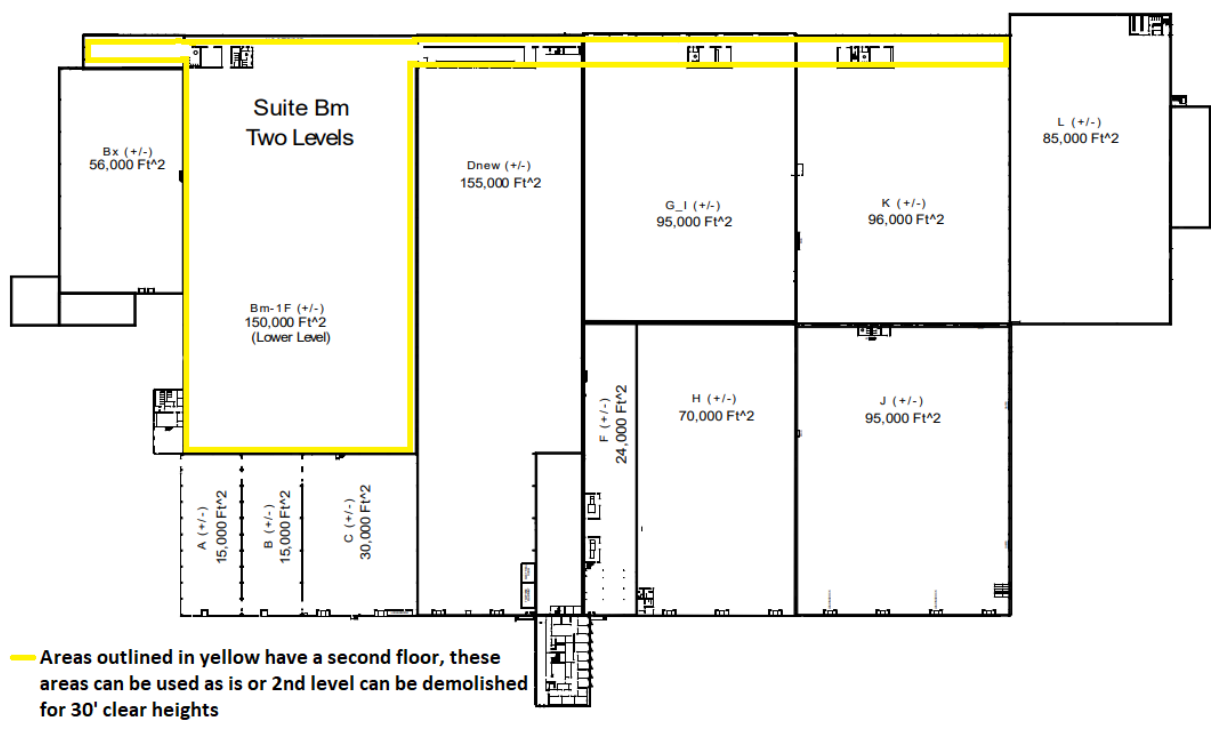
# MID SOUTH INDUSTRIAL PARK

Main Building  
515 Mid South Dr., Salisbury, NC



Contact: Houston Roberts • [houston@forsiteinc.com](mailto:houston@forsiteinc.com) • 704-361-0129

# MID SOUTH INDUSTRIAL PARK



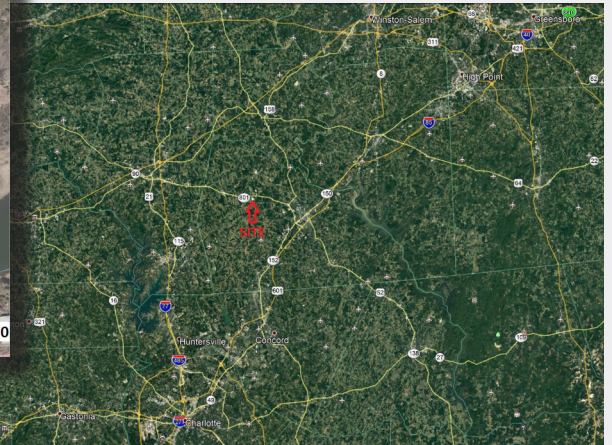
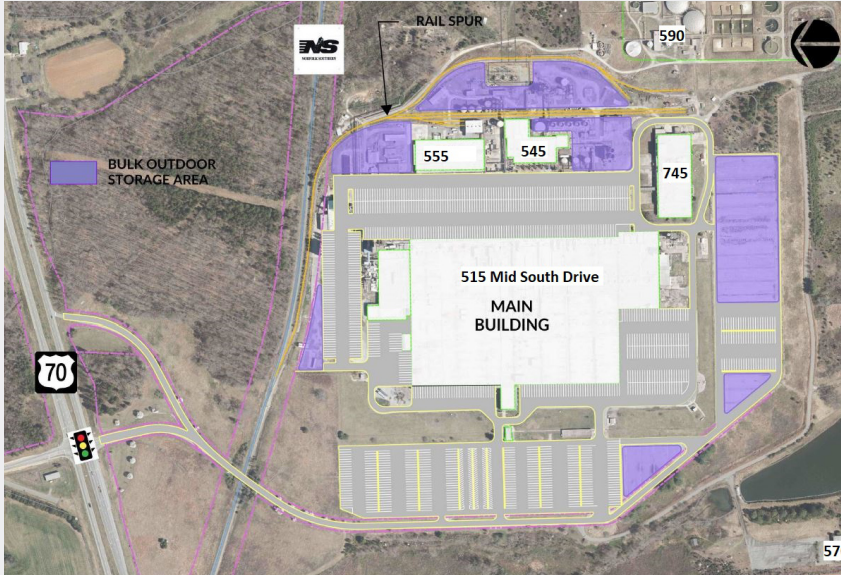
# MID SOUTH INDUSTRIAL PARK



Rear Building Slab Available for New Construction/Expansion up to +/- 300,000 SF or Outdoor Storage



# MID SOUTH INDUSTRIAL PARK



- Free Standing Buildings Available for Lease (555, 545, & 570)
- Abundant Outdoor Storage and Parking for 1,000+ Trailers



- Sites Available For Sale or Build to Suit



## Mid South Industrial Park SALISBURY, NC

All information furnished regarding property for sale, rental, or financing is from sources deemed reliable, but no warranty or representation is made as to the accuracy thereof and same is submitted subject to errors, omissions, change of price, rental or other conditions, prior to sale, lease or financing or withdrawal without notice. No liability of any kind is to be imposed on the broker herein.

