



Nashua Riverfront Master Plan Implementation Conceptual Design Review

DRAFT

June 18, 2020



Six **BIG ideas** for Nashua's Riverfront



CONNECTIVITY

Create a continuous riverwalk that connects Downtown Nashua, surrounding neighborhoods, Broad Street Parkway and Mine Falls Park with a priority on improved connections to Main Street.



RECREATION & GREEN SPACE

Preserve existing and add new green space within the river corridor. Create new opportunities for recreation and public gathering in, on and around the river with a priority on improvements to Parc de Notre Renaissance Francaise.



ENVIRONMENTAL STEWARDSHIP

Manage and maintain the vegetation along the riverfront, create green infrastructure for stormwater management and manage riparian and aquatic invasive species with a priority along the riverfront at the Millyard Technology Park.



FLOOD RESILIENCY

Promote flood resiliency in future riverfront development and retrofit or relocate critical infrastructure to improve flood resiliency when possible, with a priority of the electrical substation on Front Street.



ACCESS TO THE RIVER

Create visual and physical opportunities to access the river throughout the downtown riverfront area with a priority on a new dock structure and fountains West of the Main Street bridge.



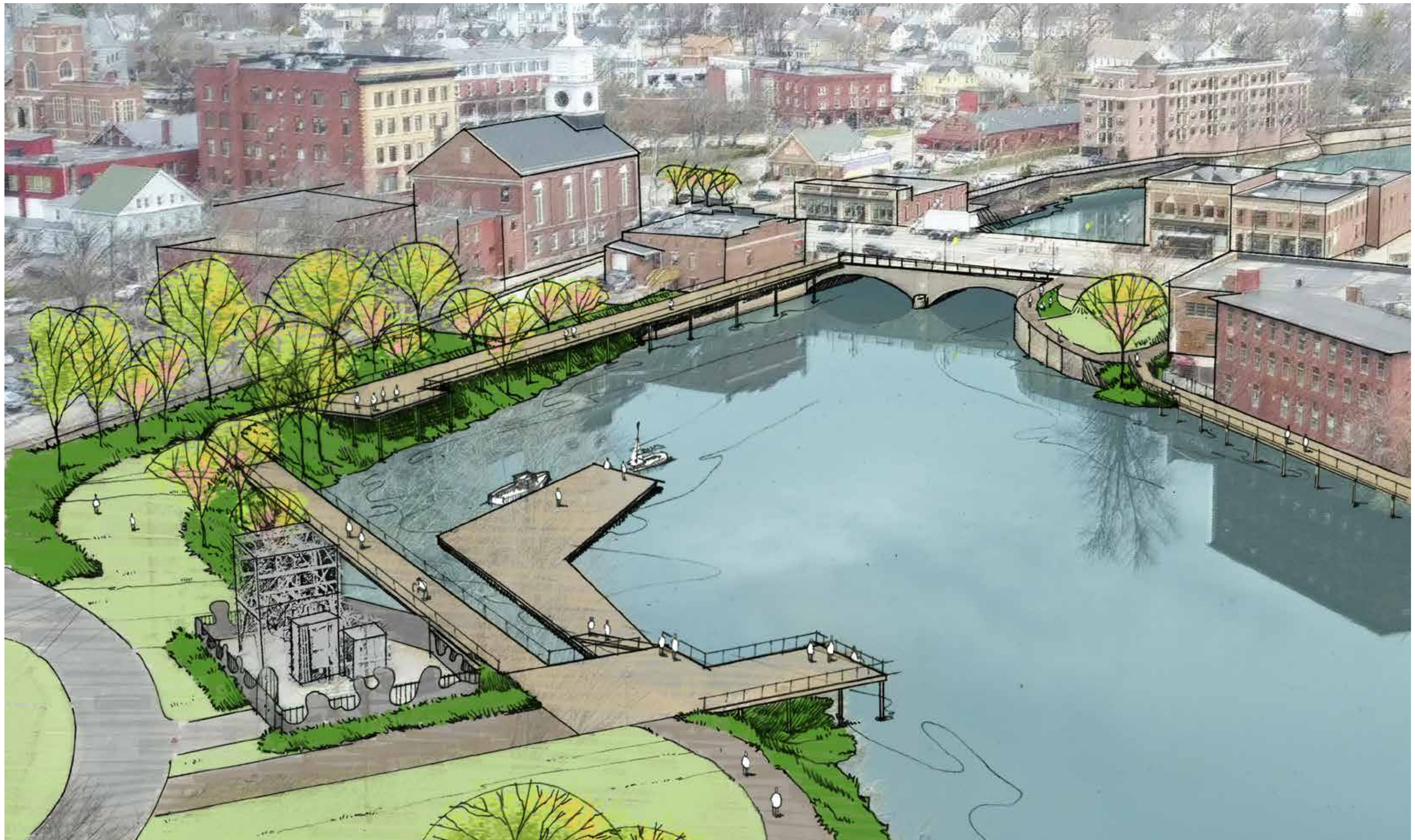
ECONOMIC DEVELOPMENT

Capture value created by new development along the riverfront to make capital improvements with a priority on the execution of improvements as defined in the focus areas of the riverfront plan.

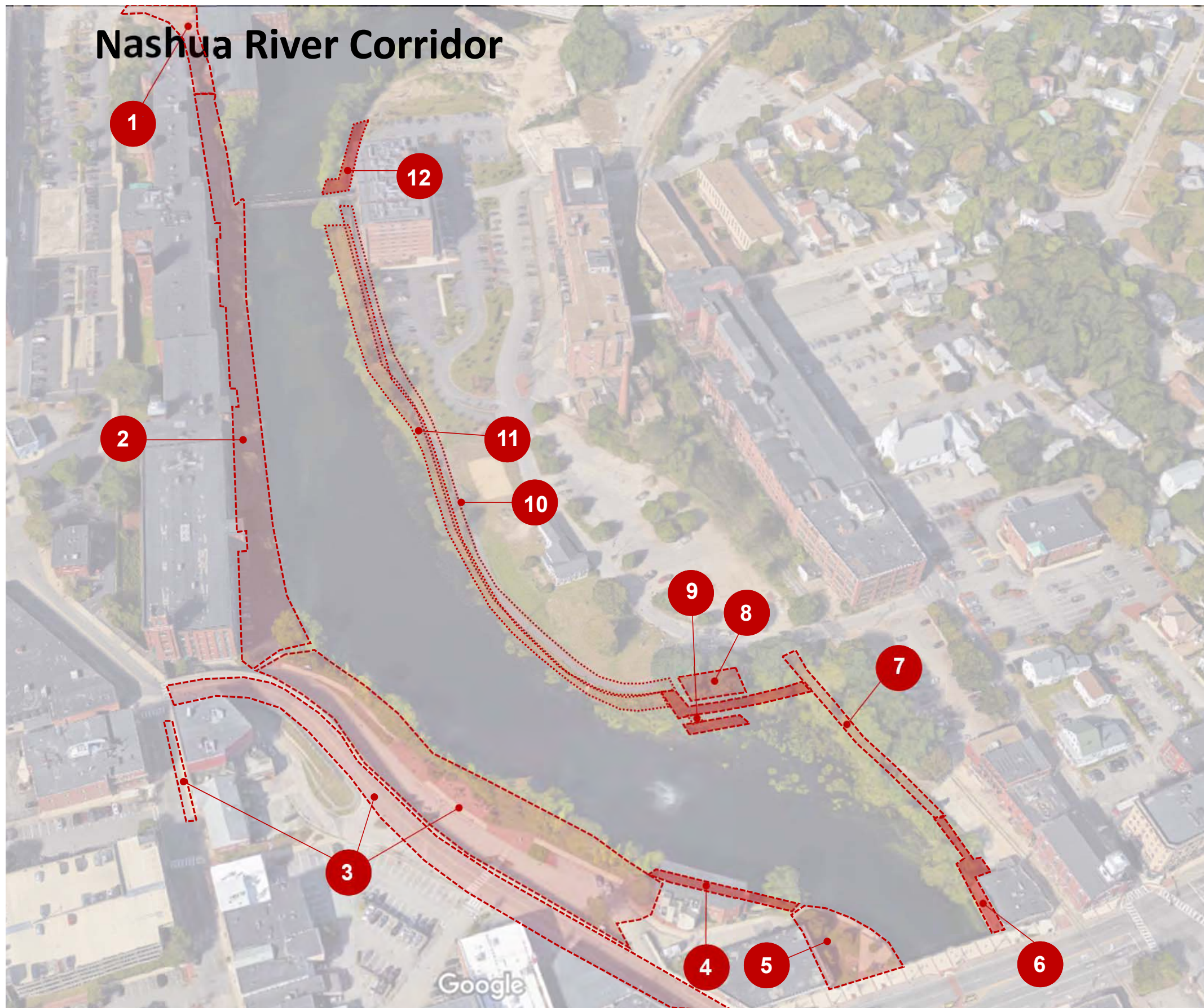
DRAFT







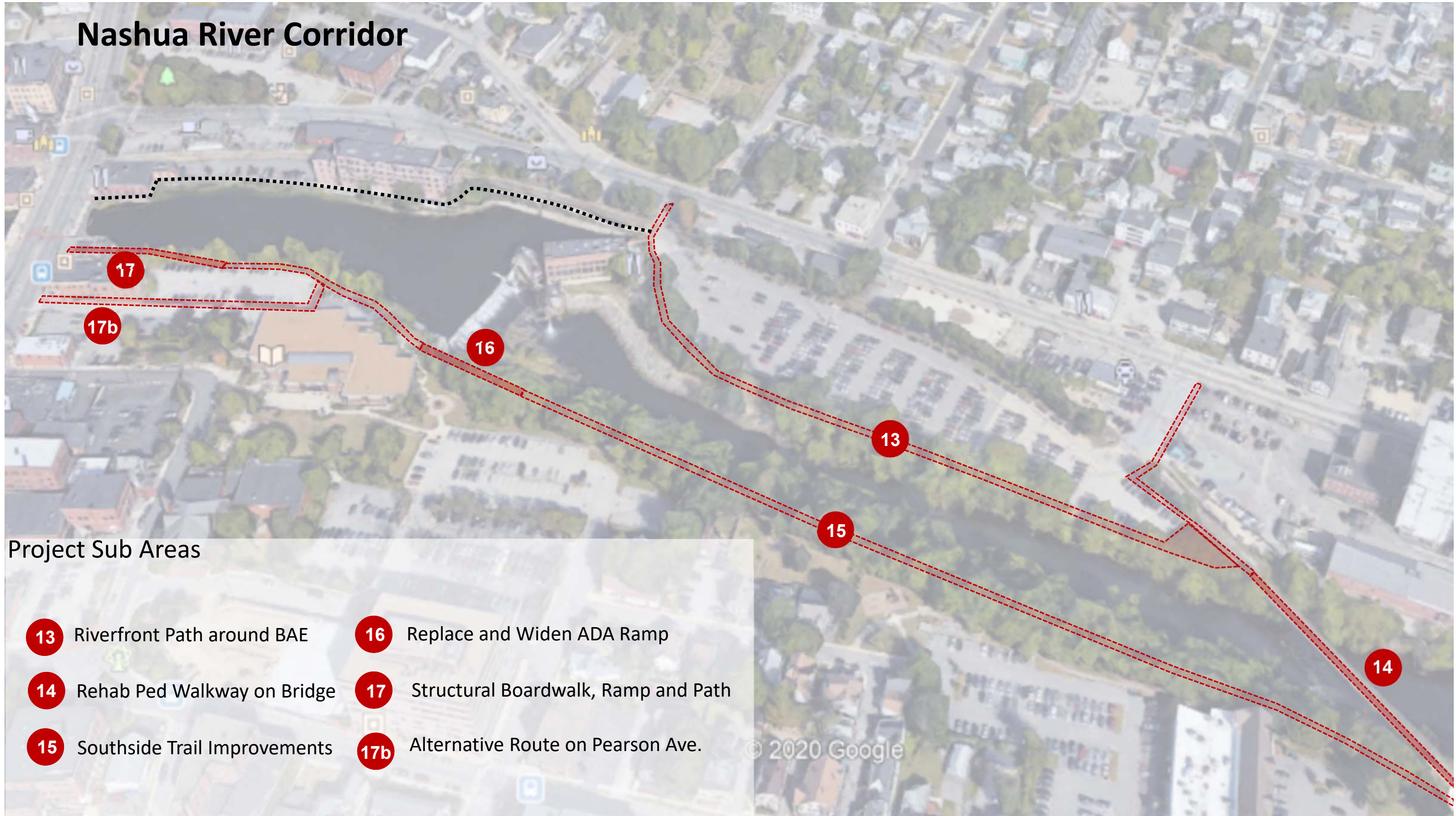
Nashua River Corridor



Project Sub Areas

- 1 Ped Enhancements to Pine Street
- 2 Factory St Extension Improvements
- 3 Parc de la Renaissance Park Improvements, Revise Water St and Factory St Parking Layout.
- 4 New Boardwalk & Ramp
- 5 Renovation to Bicentennial Park
- 6 New Boardwalk & Ramp to Main St.
- 7 Multipurpose Path Improvements
- 8 Substation Screening
- 9 Boardwalk Connector and Floating Dock
- 10 Potential Trail Improvements / Nodes
- 11 Potential Riverbank Enhancements
- 12 New ADA Ramp to Cotton Transfer Bridge

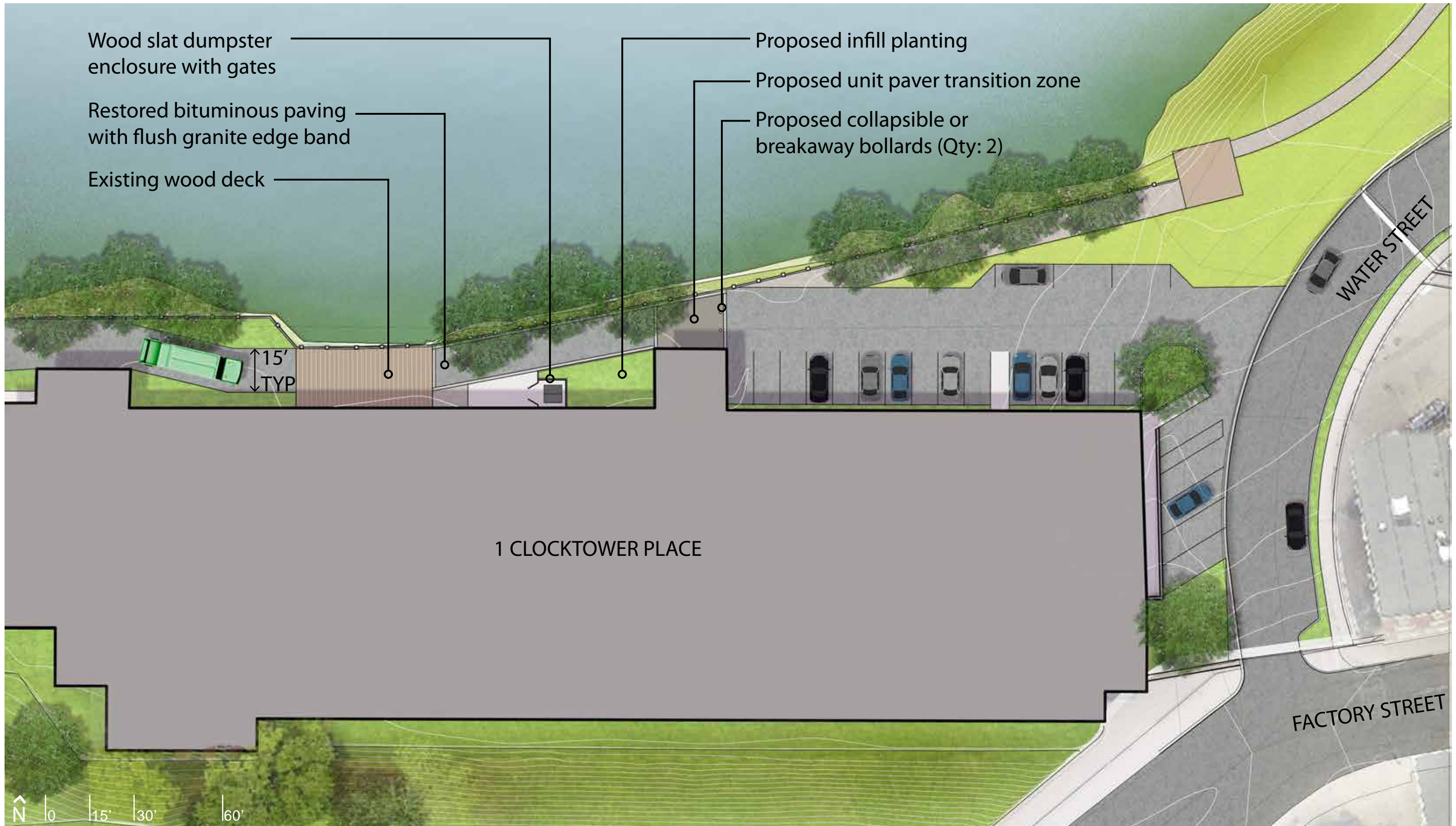
Nashua River Corridor



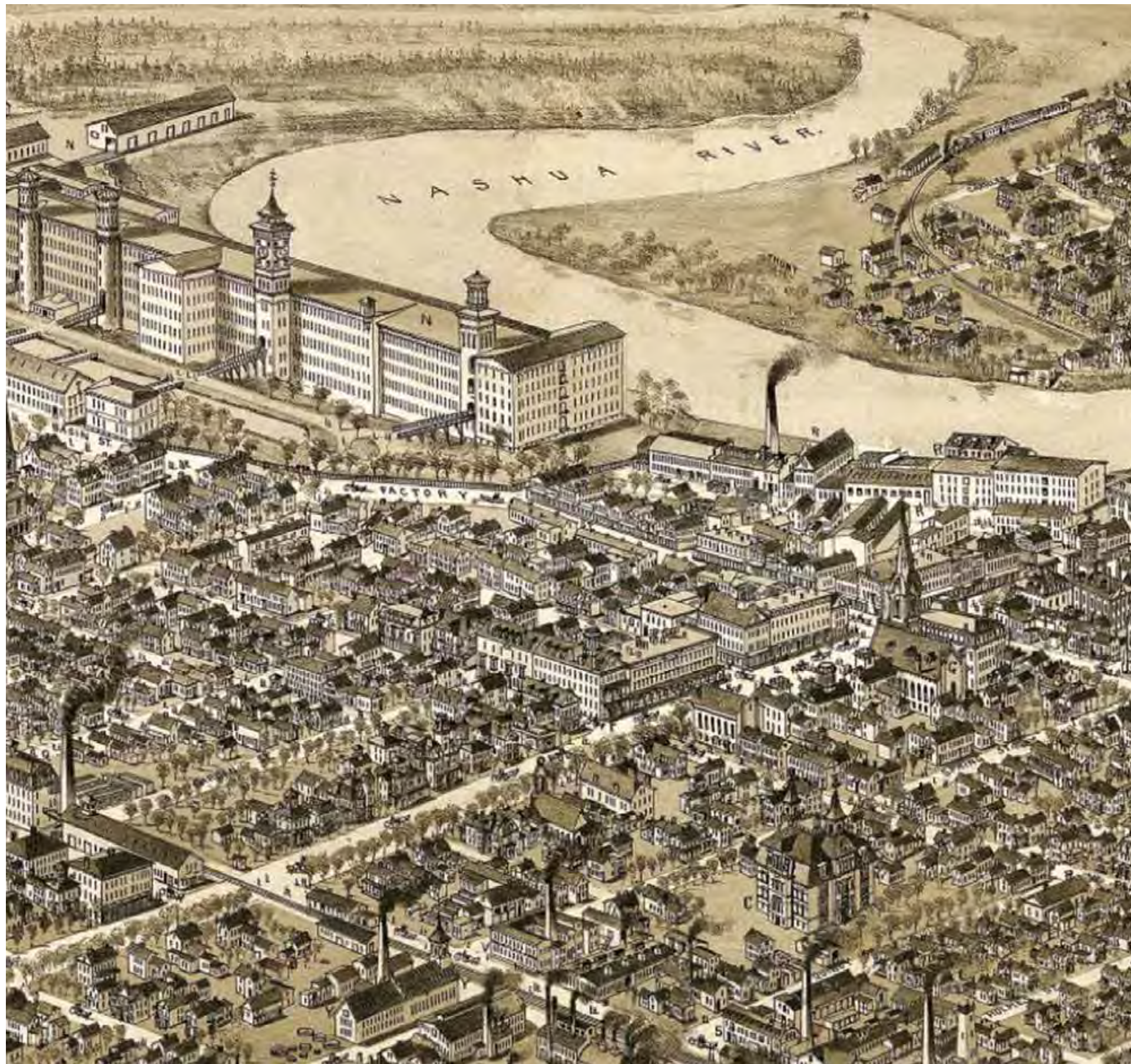
Project Sub Areas

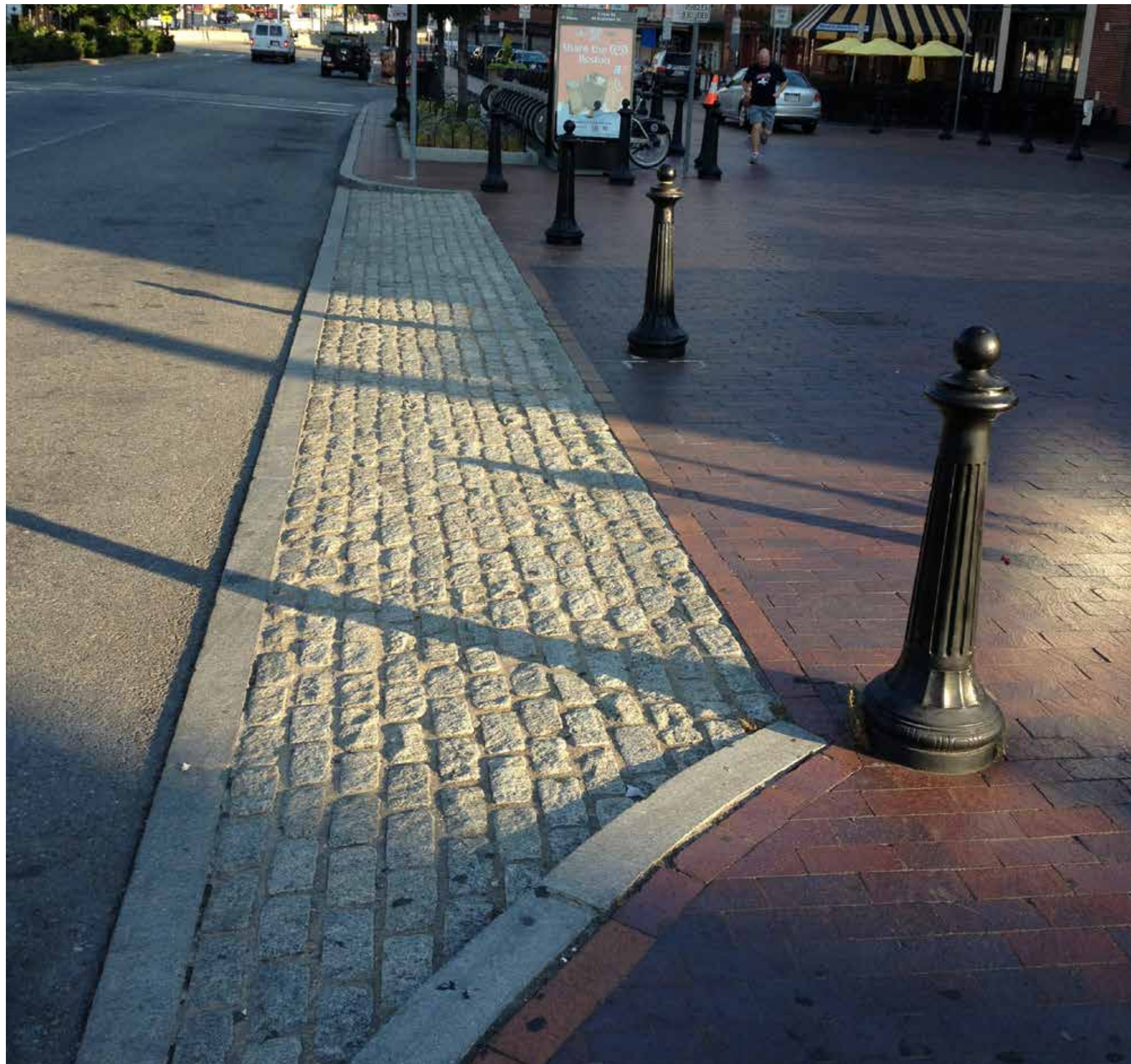
- 13** Riverfront Path around BAE
- 14** Rehab Ped Walkway on Bridge
- 15** Southside Trail Improvements
- 16** Replace and Widen ADA Ramp
- 17** Structural Boardwalk, Ramp and Path
- 17b** Alternative Route on Pearson Ave.



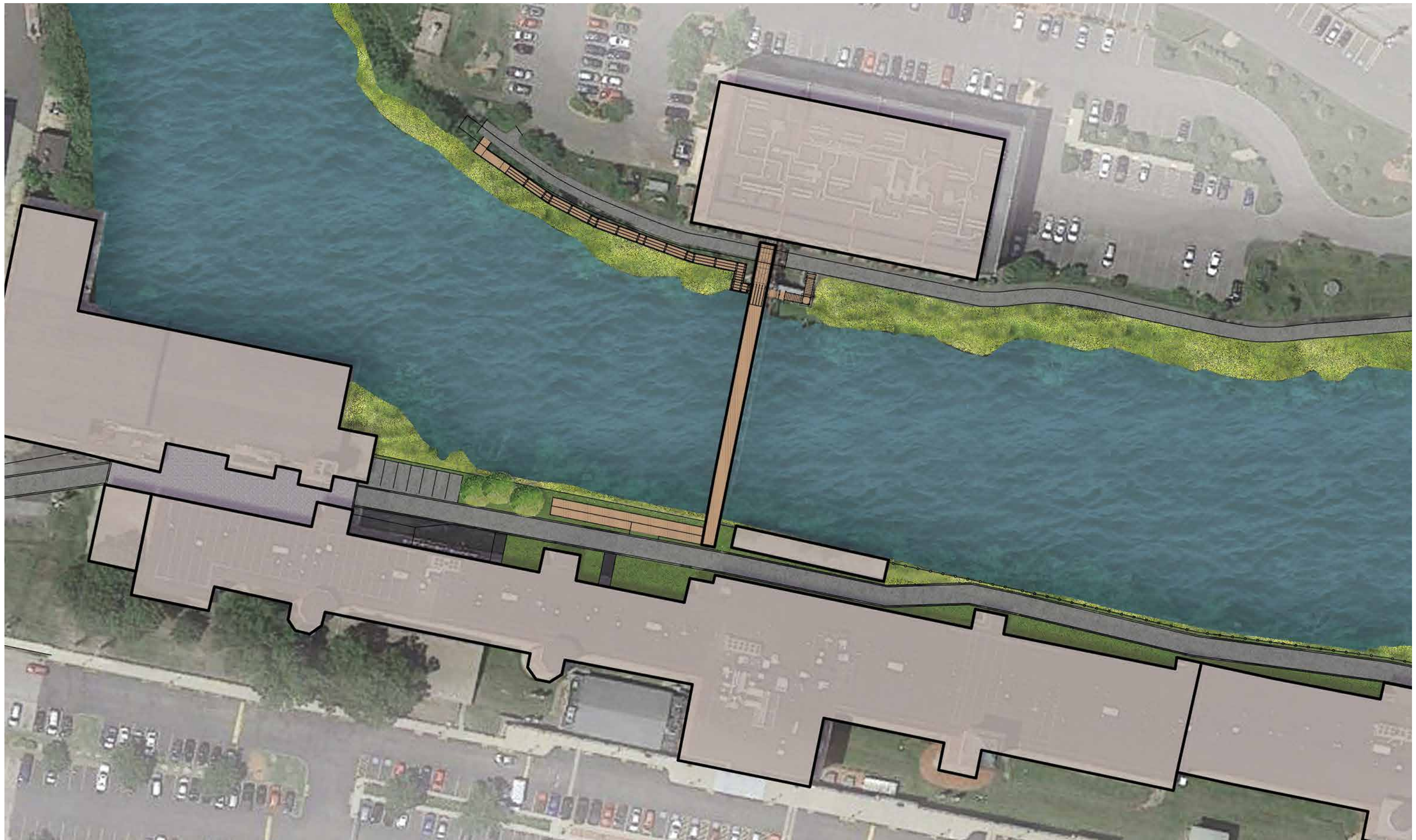


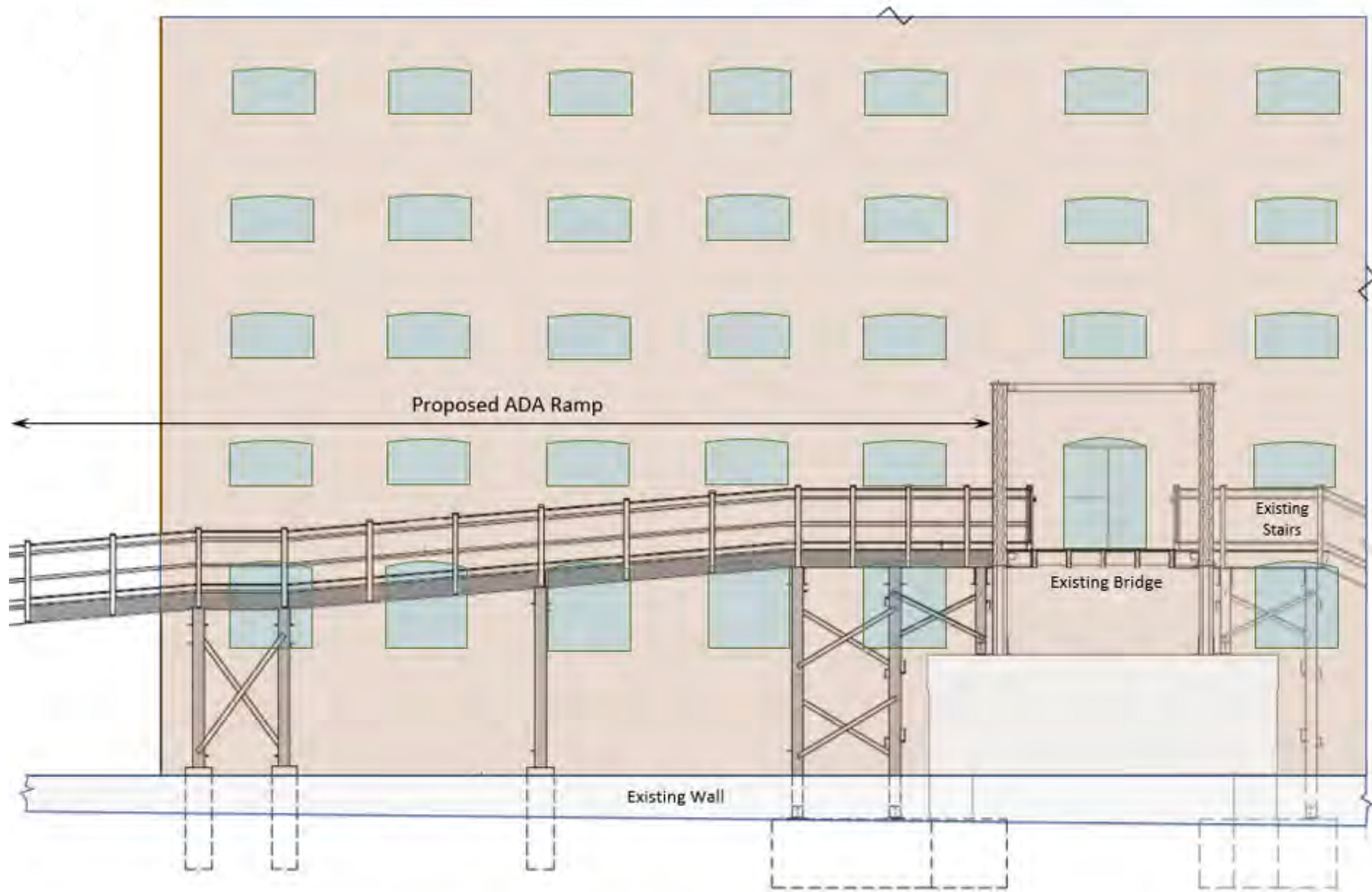




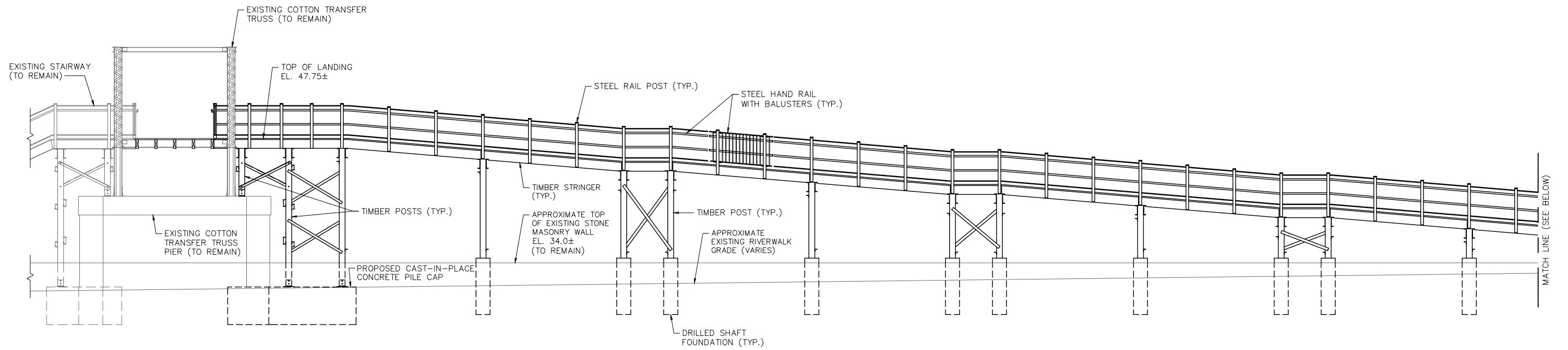






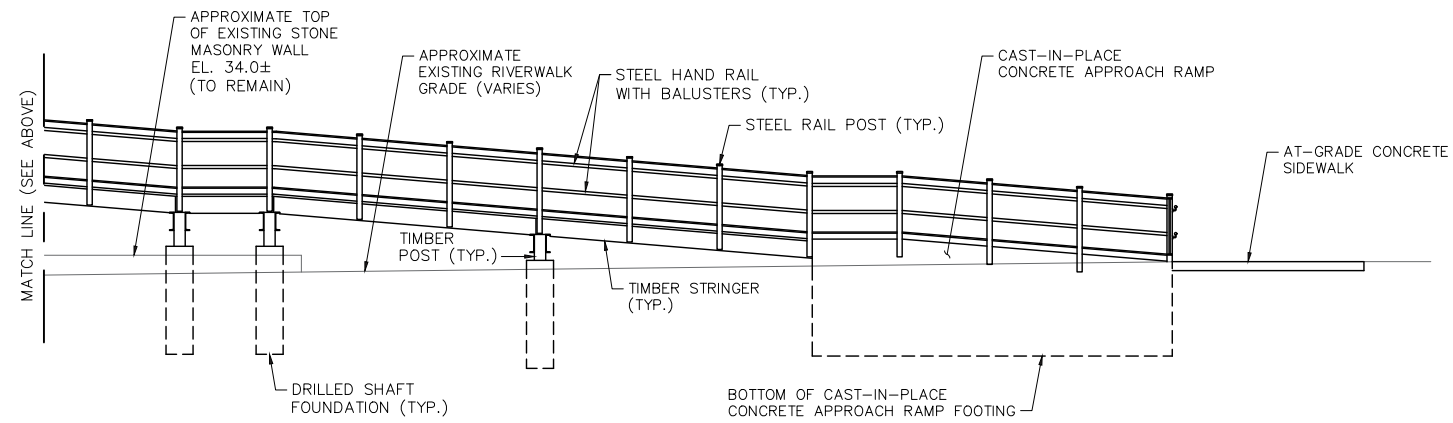


Approximate Visual Impacts of Proposed ADA Ramp against Existing Building



CONCEPTUAL ELEVATION

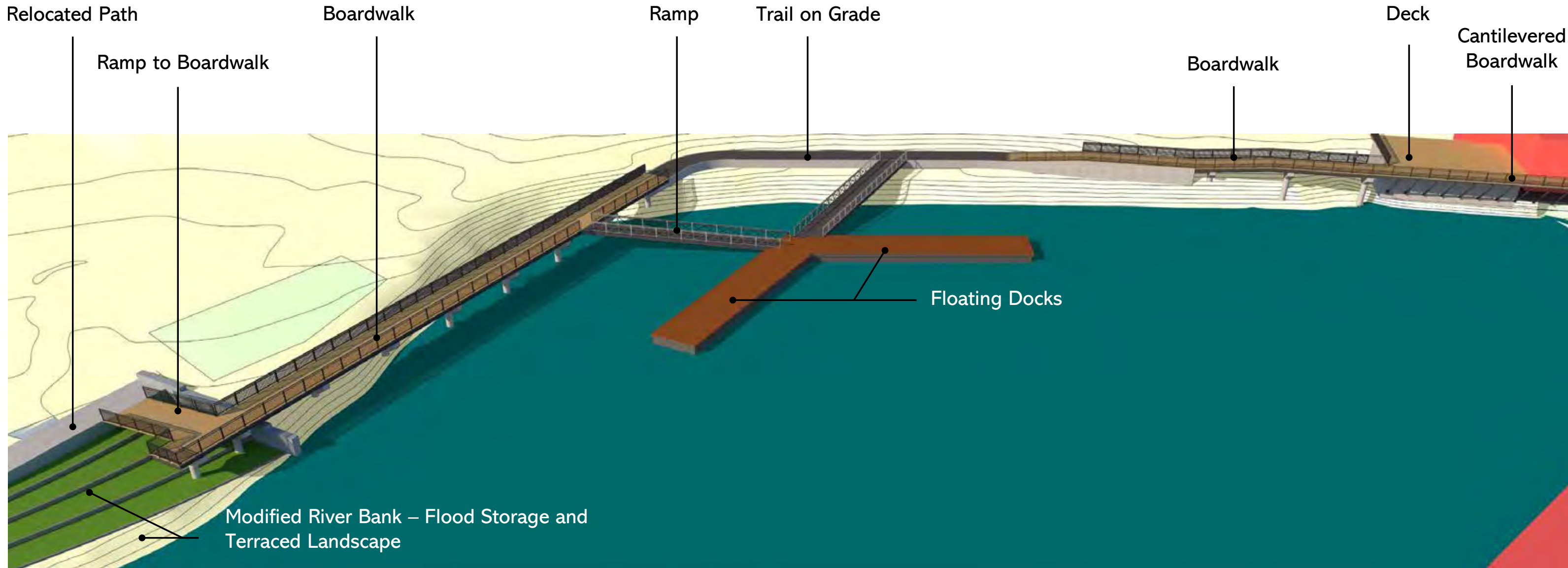
SCALE: 3/16" = 1'-0"



CONCEPTUAL ELEVATION

SCALE: 3/16" = 1'-0"









SUBSTATION/GREELEY HOUSE AREA - PROPOSED CONDITIONS

DRAFT







SUBSTATION - PROPOSED SCREENING OPTION 1

DRAFT









4 WATER STREET (FROM ACROSS RIVER) - EXISTING CONDITIONS

DRAFT





4 WATER STREET (FROM ACROSS RIVER) - PROPOSED CONDITIONS

DRAFT



HALVORSON
Tighe&Bond STUDIO

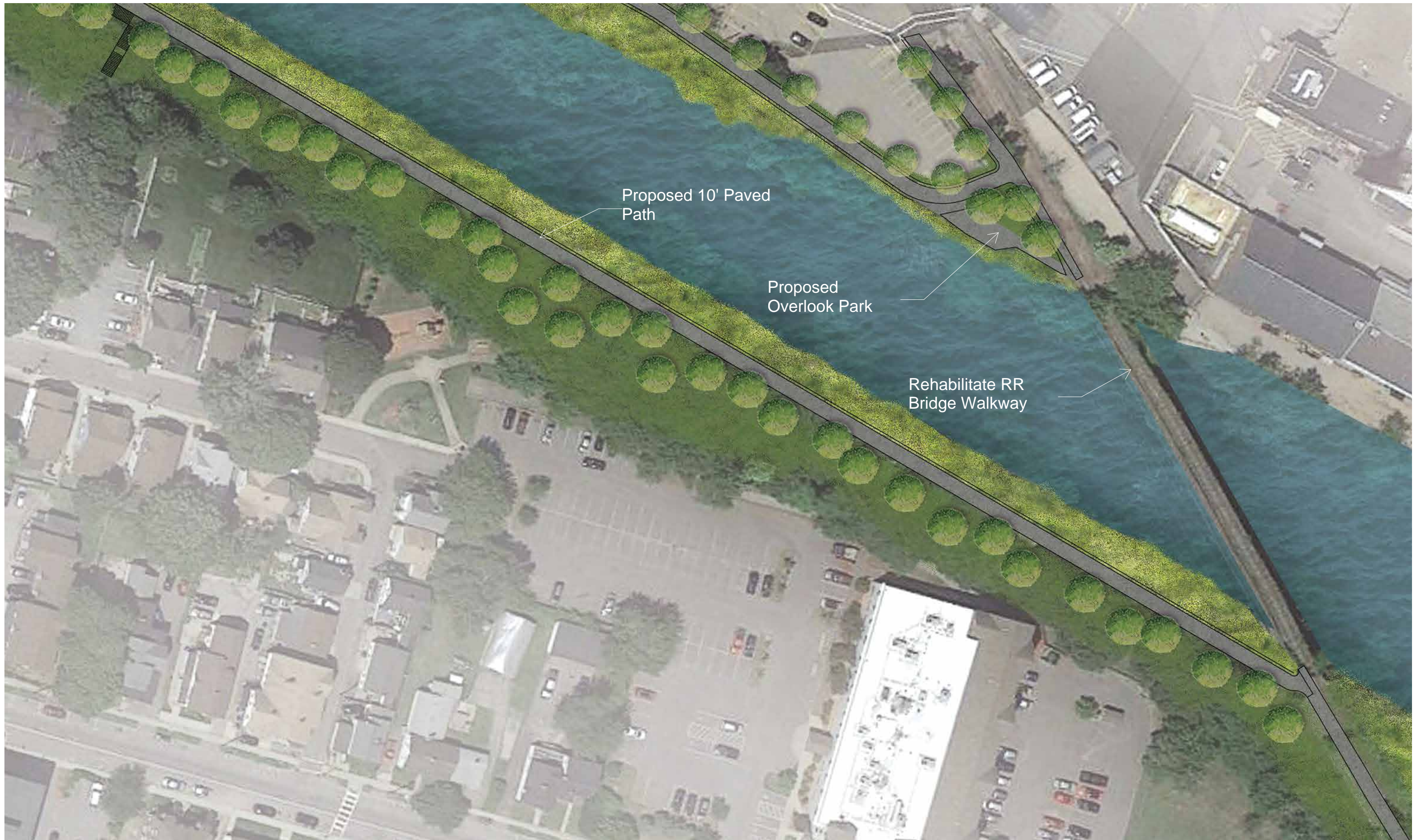












Proposed 10' Paved Path

Proposed Overlook Park

Rehabilitate RR Bridge Walkway



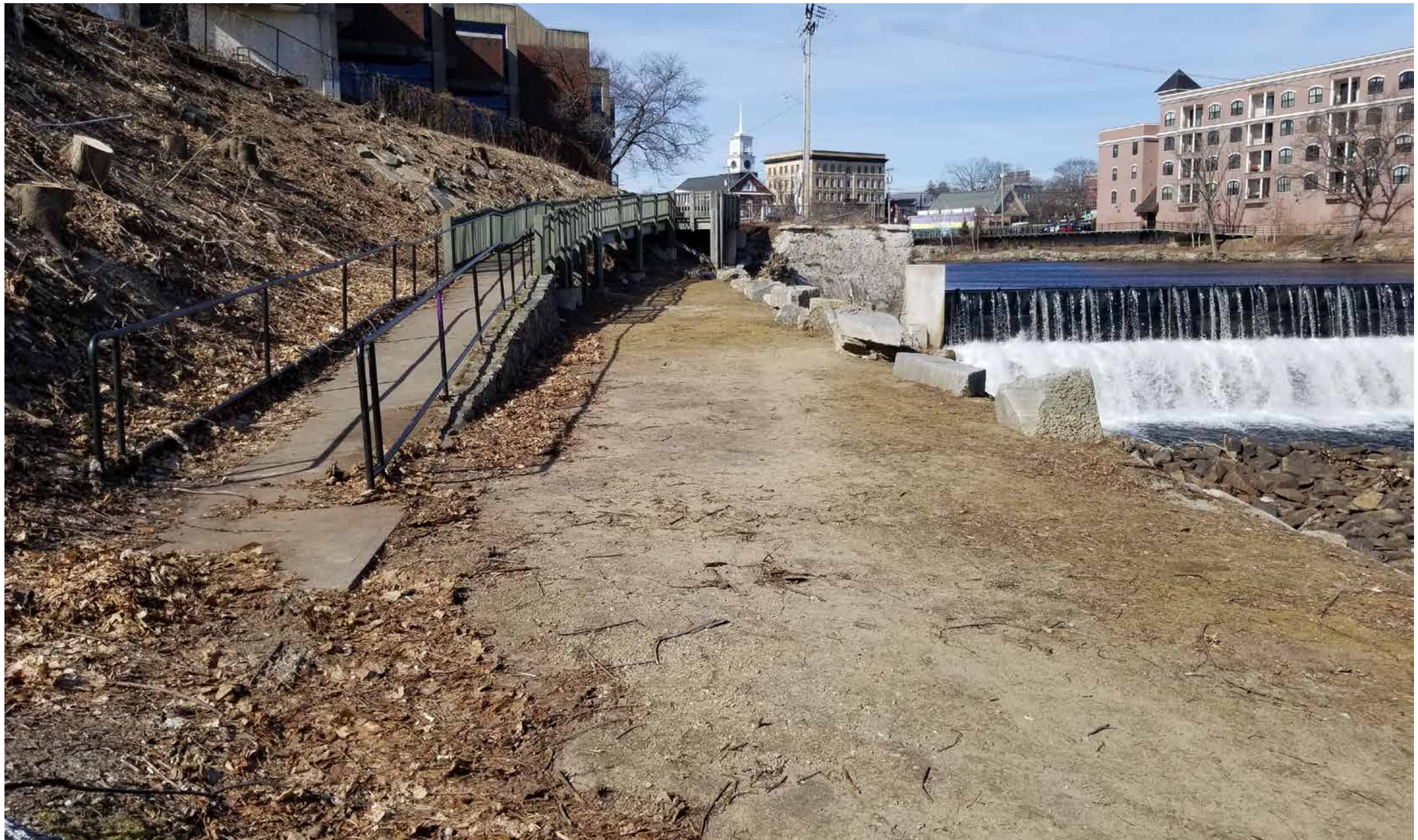
Proposed Boardwalk to Main Street

Proposed 10' Paved Path

LIBRARY

Proposed 10' Wide ADA Ramp

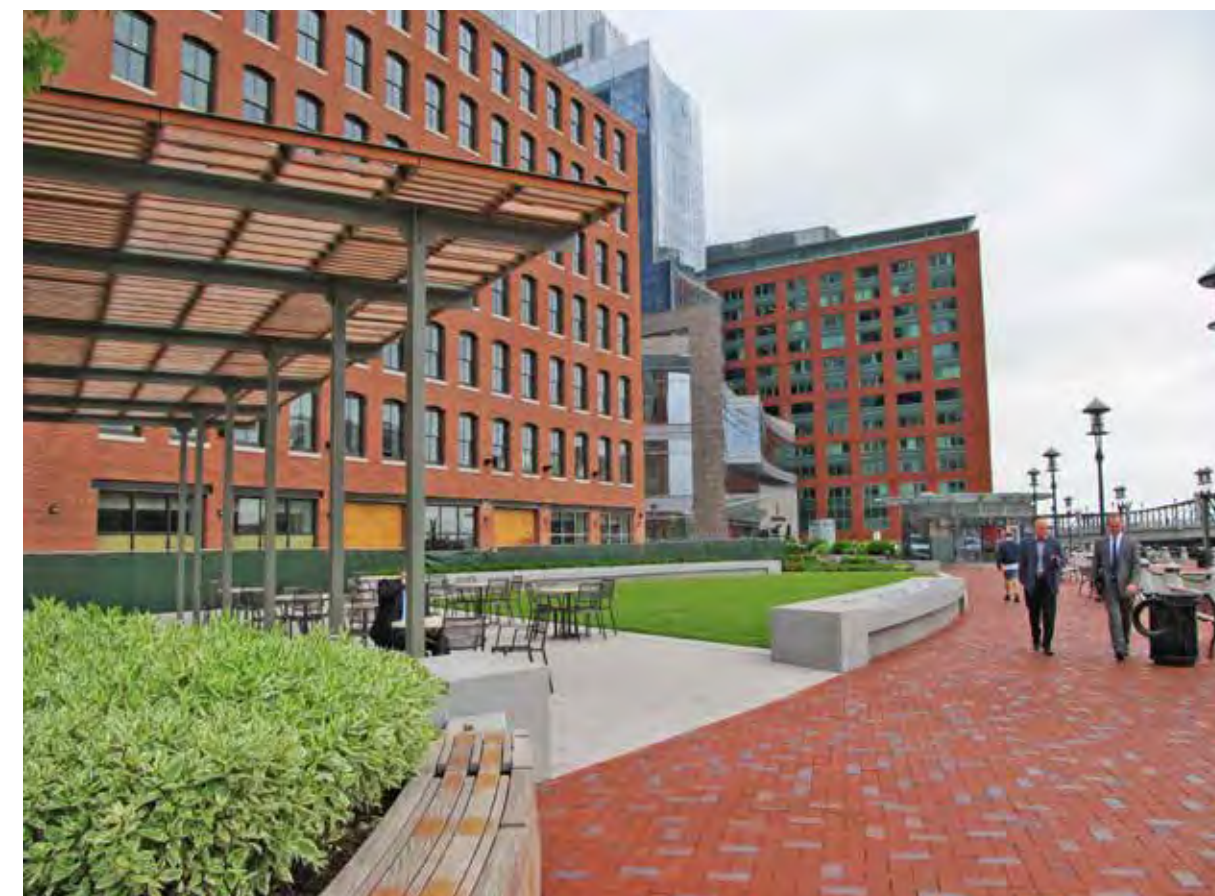
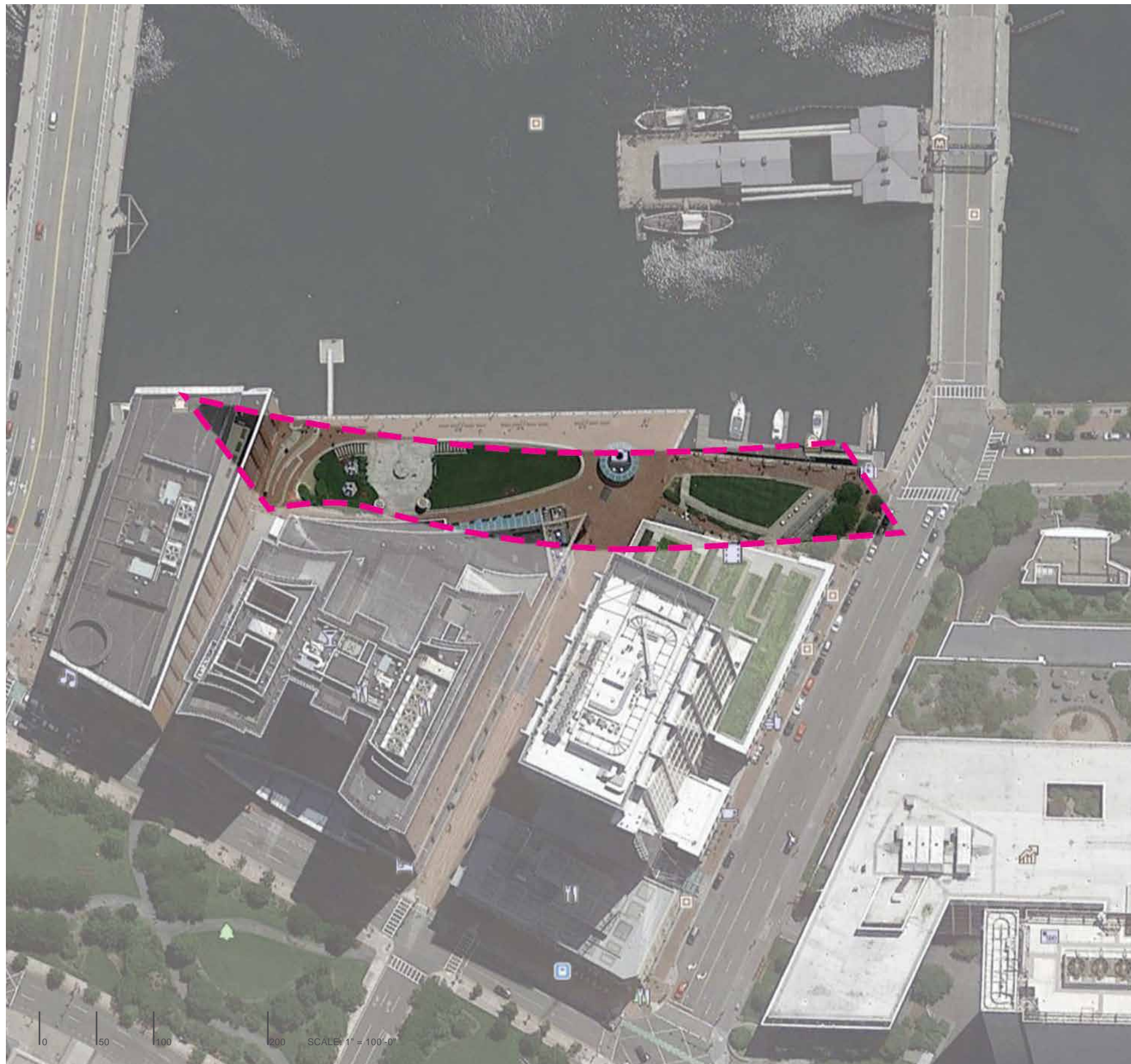
Proposed 10' Paved Path















Chattanooga Waterfront Park - Chattanooga, TN



Clippership Wharf - East Boston, MA



Riverfront - Lyon, France

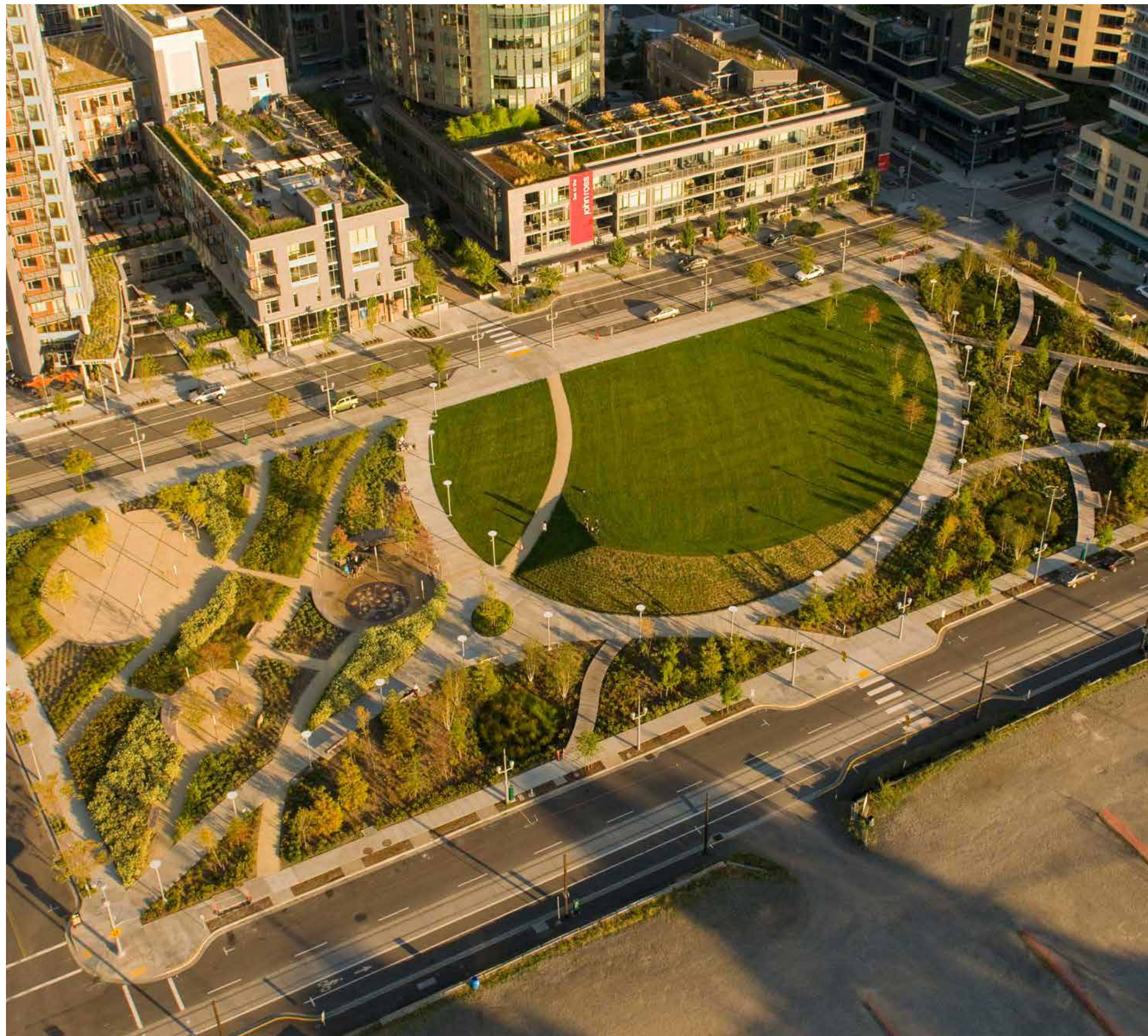




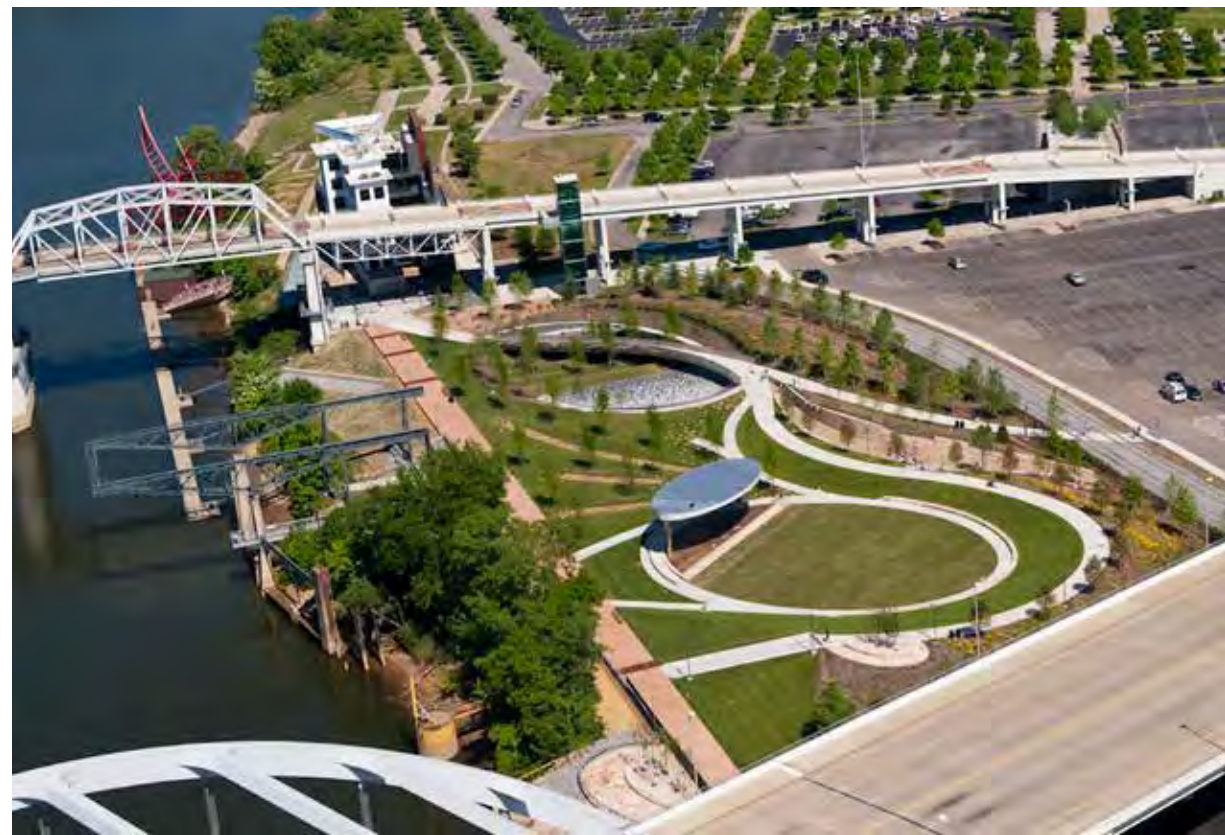
Brighton Square Park - Brighton, MA



Farnham-Connolly State Park Pavilion - Canton, MA



Elizabeth Caruthers Park - Portland, OR



Cumberland Park - Nashville, TN



Independence Waterfront Park - Independence, Oregon

