



COMMERCIAL REAL ESTATE

LAND FOR SALE



Nashville Drive & W. Tennessee Street

Tallahassee, FL 32304

LEWIS BUFORD

Partner/Broker
850.591.6363
lewis@tlgproperty.com

TLG REAL ESTATE SERVICES

3520 Thomasville Road, Suite 200
Tallahassee, FL 32309
O: 850.385.6363



EXECUTIVE SUMMARY

NASHVILLE DRIVE & W. TENNESSEE STREET

NASHVILLE DRIVE & WEST TENNESSEE STREET, TALLAHASSEE, FL 32304



OFFERING SUMMARY

Sale Price:	\$300,000
Lot Size:	0.8 Acres
Zoning:	AC
APN:	21-30-20-007-0000

PROPERTY OVERVIEW

.80 acres of vacant commercial land for sale on the West side of Tallahassee and only 1/2 mile from Capital Circle SW. This property is surrounded by hotels, shops, restaurants and just across the street from Tractor Supply Company. Convenient to FSU and TCC.

LOCATION OVERVIEW

Located on the West side of Tallahassee at Nashville Drive and W. Tennessee Street.

[Click Here for Zoning Information](#)

Lewis Buford
850.591.6363
lewis@tlgproperty.com

TLG REAL ESTATE SERVICES
3520 Thomasville Road, Suite 200, Tallahassee, FL 32309
850.385.6363

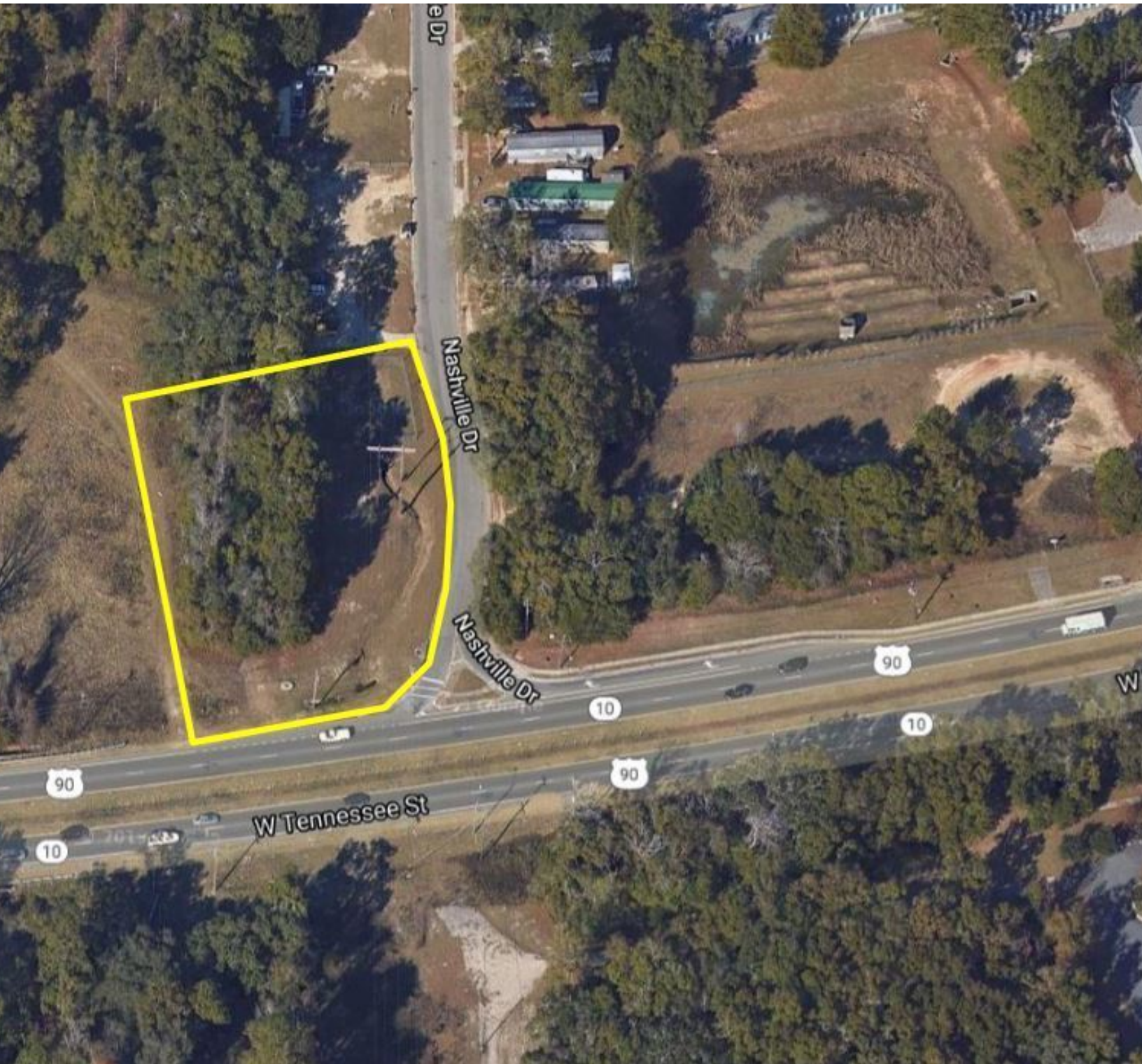




PARCEL

NASHVILLE DRIVE & W. TENNESSEE STREET

NASHVILLE DRIVE & WEST TENNESSEE STREET, TALLAHASSEE, FL 32304



Lewis Buford
850.591.6363
lewis@tlgproperty.com

TLG REAL ESTATE SERVICES
3520 Thomasville Road, Suite 200, Tallahassee, FL 32309
850.385.6363





RETAILER MAP

NASHVILLE DRIVE & W. TENNESSEE STREET

NASHVILLE DRIVE & WEST TENNESSEE STREET, TALLAHASSEE, FL 32304



Lewis Buford
850.591.6363
lewis@tlgproperty.com

TLG REAL ESTATE SERVICES

3520 Thomasville Road, Suite 200, Tallahassee, FL 32309

850.385.6363

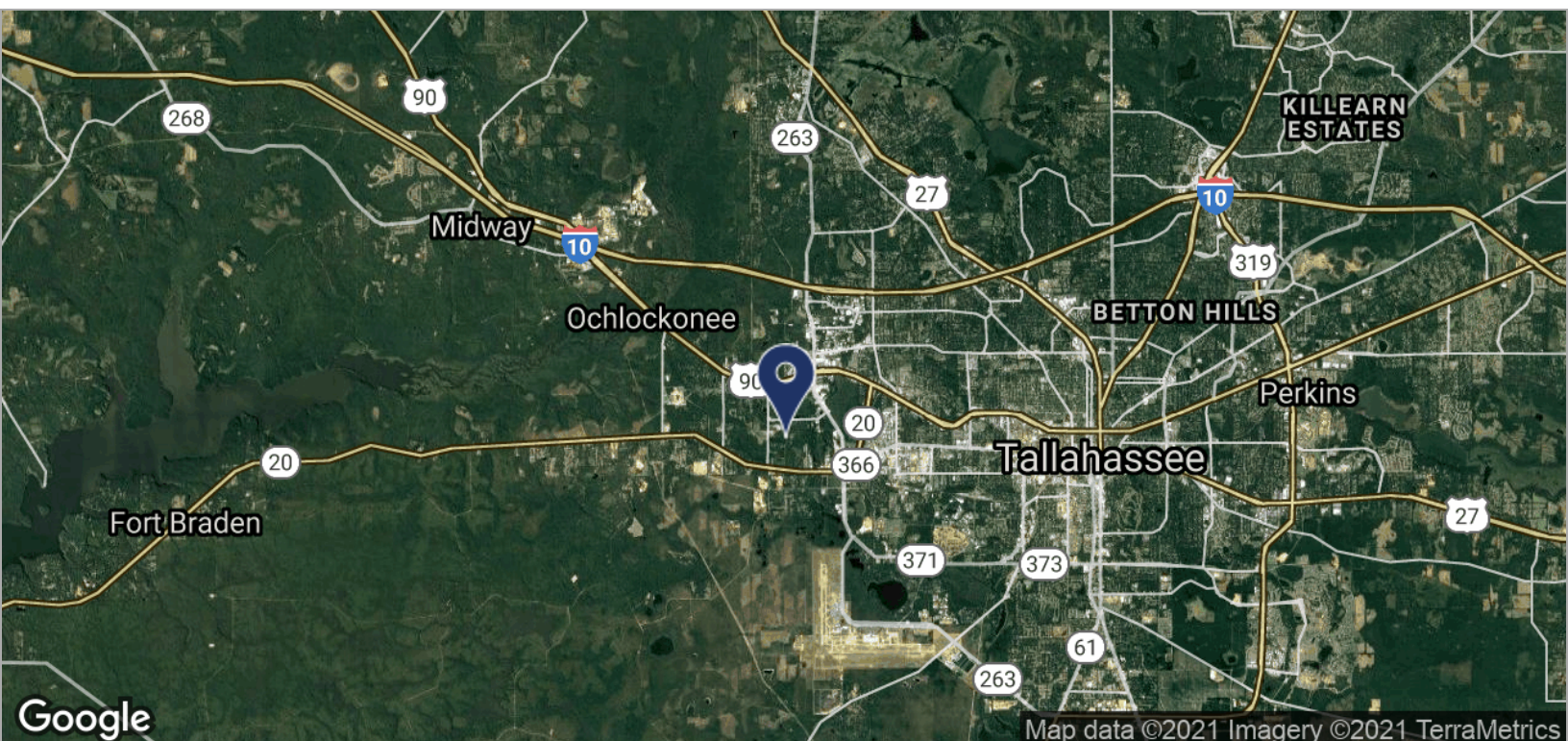
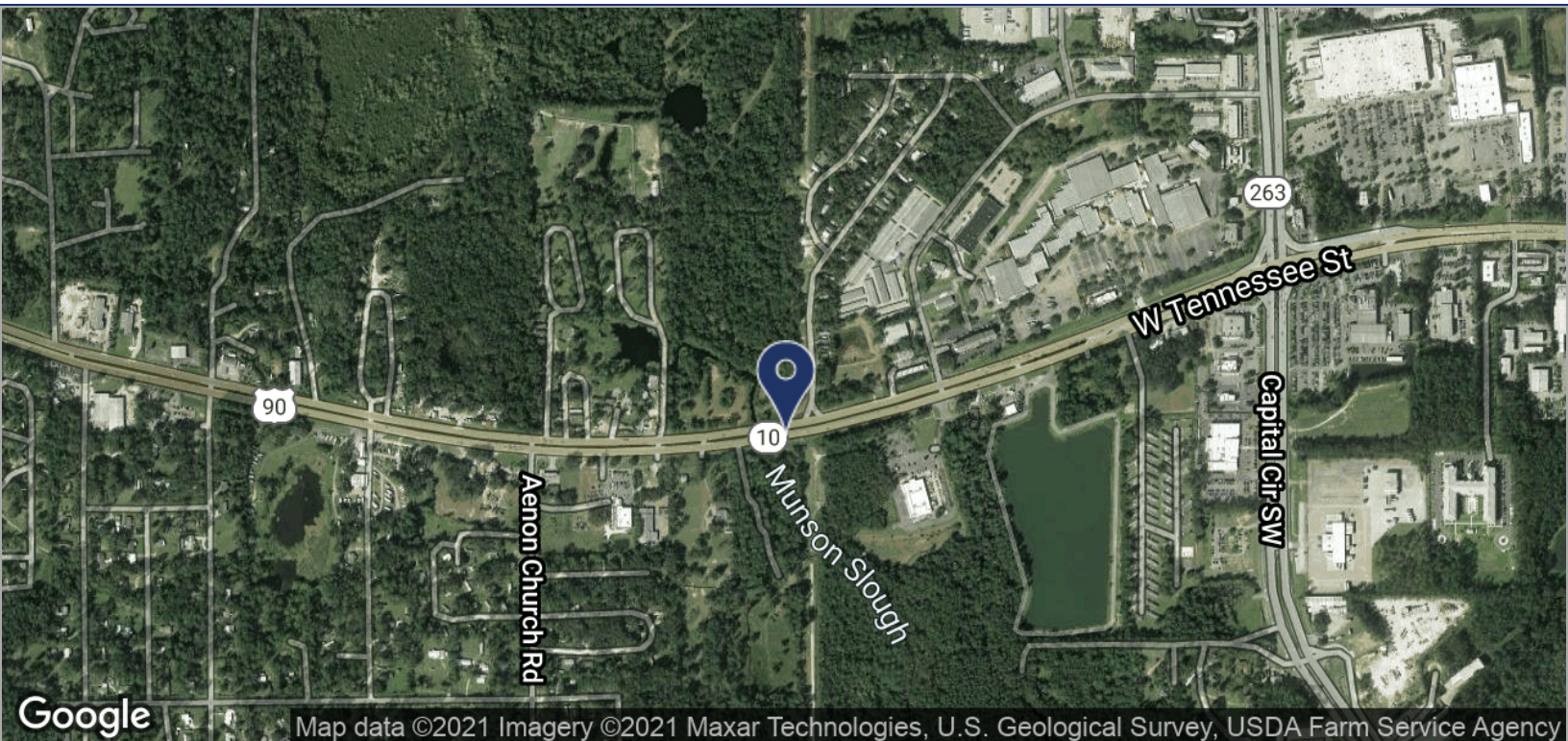




LOCATION MAPS

NASHVILLE DRIVE & W. TENNESSEE STREET

NASHVILLE DRIVE & WEST TENNESSEE STREET, TALLAHASSEE, FL 32304



Lewis Buford
850.591.6363
lewis@tlgproperty.com

TLG REAL ESTATE SERVICES
3520 Thomasville Road, Suite 200, Tallahassee, FL 32309
850.385.6363

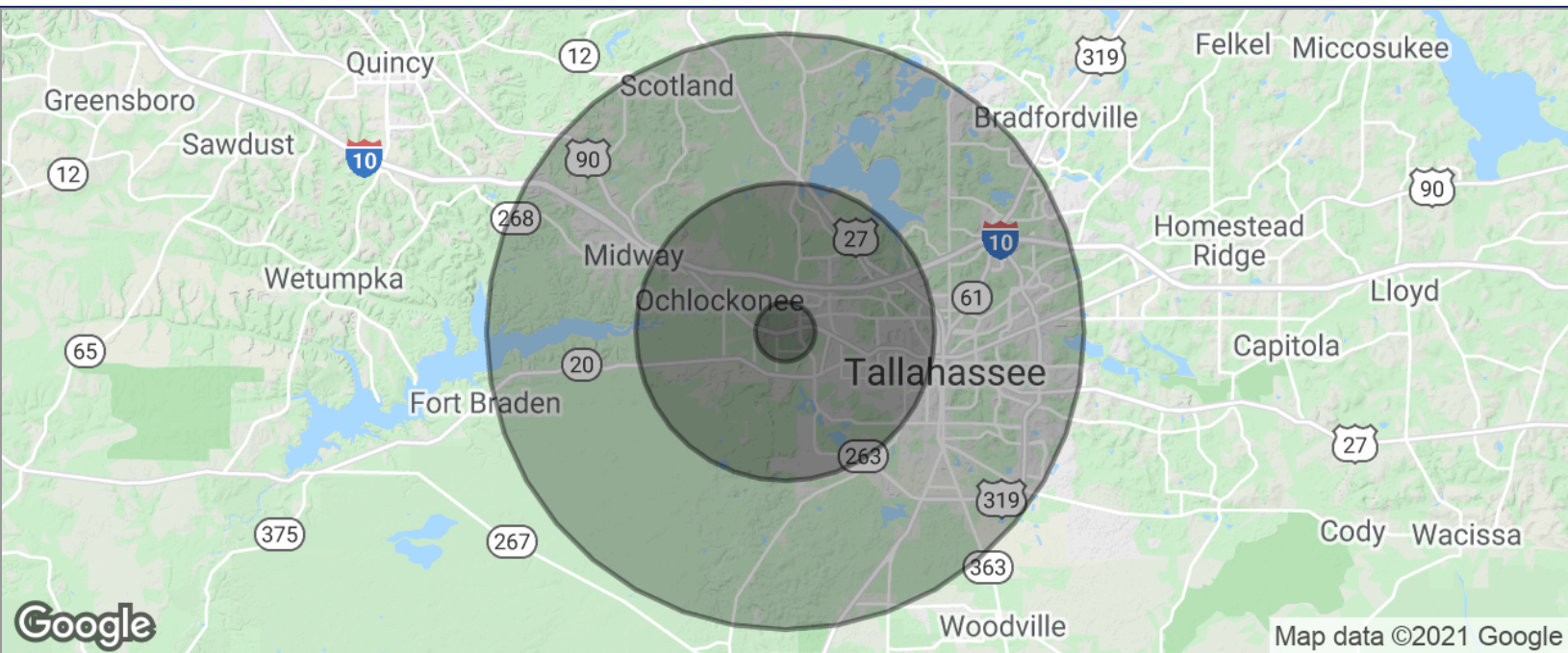




DEMOGRAPHICS MAP

NASHVILLE DRIVE & W. TENNESSEE STREET

NASHVILLE DRIVE & WEST TENNESSEE STREET, TALLAHASSEE, FL 32304



POPULATION	1 MILE	5 MILES	10 MILES
TOTAL POPULATION	1,897	92,391	213,154
MEDIAN AGE	30.3	25.3	29.9
MEDIAN AGE (MALE)	30.5	25.2	29.2
MEDIAN AGE (FEMALE)	30.1	25.3	30.4
HOUSEHOLDS & INCOME	1 MILE	5 MILES	10 MILES
TOTAL HOUSEHOLDS	752	35,416	87,366
# OF PERSONS PER HH	2.5	2.6	2.4
AVERAGE HH INCOME	\$40,995	\$38,099	\$50,067
AVERAGE HOUSE VALUE	\$123,168	\$153,289	\$218,635

* Demographic data derived from 2010 US Census

Lewis Buford
 850.591.6363
 lewis@tlgproperty.com

TLG REAL ESTATE SERVICES
 3520 Thomasville Road, Suite 200, Tallahassee, FL 32309
 850.385.6363

