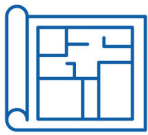


FOR LEASE | SAPULPA EXECUTIVE SUITES

5 N Park St, Sapulpa, Oklahoma, 74066

WIGGIN
PROPERTIES, LLC



115-172
Square feet

Available SF



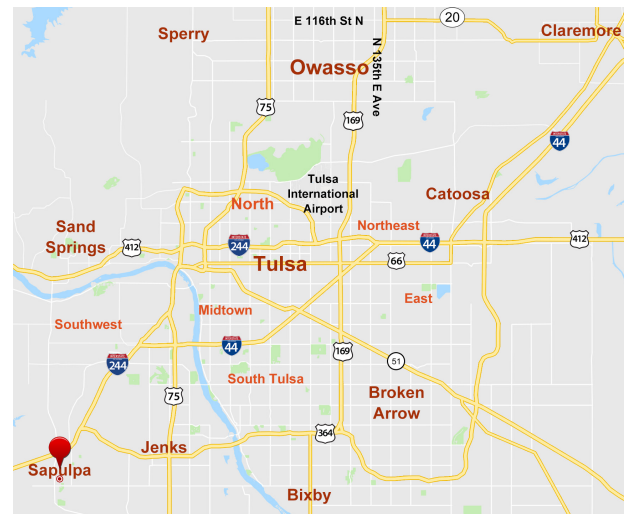
\$675-800
+ Full Service

Lease Rate



Office
Private Offices

Property Type



HIGHLIGHTS

- ✓ Historic character with modern amenities
- ✓ Located in historic downtown Sapulpa
- ✓ Large windows overlooking Main Street
- ✓ Shared conference room with video capabilities
- ✓ Furnished option and shared kitchenette
- ✓ Locally owned and managed

AREA DEMOGRAPHICS

	2025	3 Miles	5 Miles	10 Miles
Total Households	9,118	13,577	65,839	
Total Population	23,181	34,979	167,944	
Average HH Income	\$72,144	\$80,256	\$86,633	

Vicki Patterson, CCIM

VP of Brokerage

918.519.6731

vpatterson@wigginprop.com

Erica Cunningham, CCIM

Advisor

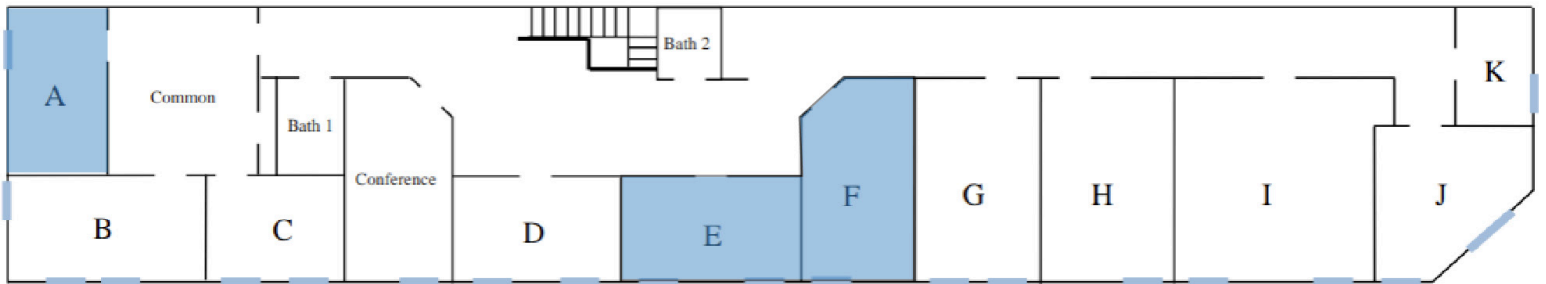
918.829.5754

ecunningham@wigginprop.com

FOR LEASE | SAPULPA EXECUTIVE SUITES

5 N Park St, Sapulpa, Oklahoma, 74066

WIGGIN
PROPERTIES, LLC



Available Suites:

- Room A
- Room E
- Room F

Vicki Patterson, CCIM

VP of Brokerage

918.519.6731

vpatterson@wigginprop.com

Erica Cunningham, CCIM

Advisor

918.829.5754

ecunningham@wigginprop.com

FOR LEASE | SAPULPA EXECUTIVE SUITES

5 N Park St, Sapulpa, Oklahoma, 74066

WIGGIN
PROPERTIES, LLC



Vicki Patterson, CCIM

VP of Brokerage

918.519.6731

vpatterson@wigginprop.com

Erica Cunningham, CCIM

Advisor

918.829.5754

ecunningham@wigginprop.com