

FOR LEASE

1150 Silverado Street

La Jolla, CA 92037



CAPITAL GROWTH
PROPERTIES, INC.

LA JOLLA PROFESSIONAL BUILDING



PROPERTY HIGHLIGHTS

- Office available
- Flexible terms
- Great walkable location
- Office suite under renovation

AVAILABLE SPACES

SF

RATE

Approx.
1,300 SF

\$5.00 psf
+ utilities



TODD LAW

Senior Vice President

tlaw@cgpincre.com

858.729.9305

CA DRE 01309241

WA DOL 27587

www.cgpincre.com

FOR LEASE

1150 Silverado Street
La Jolla, CA 92037



CAPITAL GROWTH
PROPERTIES, INC.

Exceptional Village of La Jolla Location

WALKABILITY SCORE OF 95!



Walking distance to restaurants, shopping and the Pacific Ocean!

Located on Silverado Street in La Jolla, California, La Jolla Professional Building provides one of the best experiences in La Jolla. The building is within walking distance from highly acclaimed restaurants, convenient grocery stores, and the beach.

Neighborhood Summary

- Area tenants include Herringbone Restaurant, George's Ocean Terrace, La Jolla Sports Club, Prana Yoga.
- Free street parking
- Cultural environment including The Lot—La Jolla, many museums, galleries.

FOR LEASE

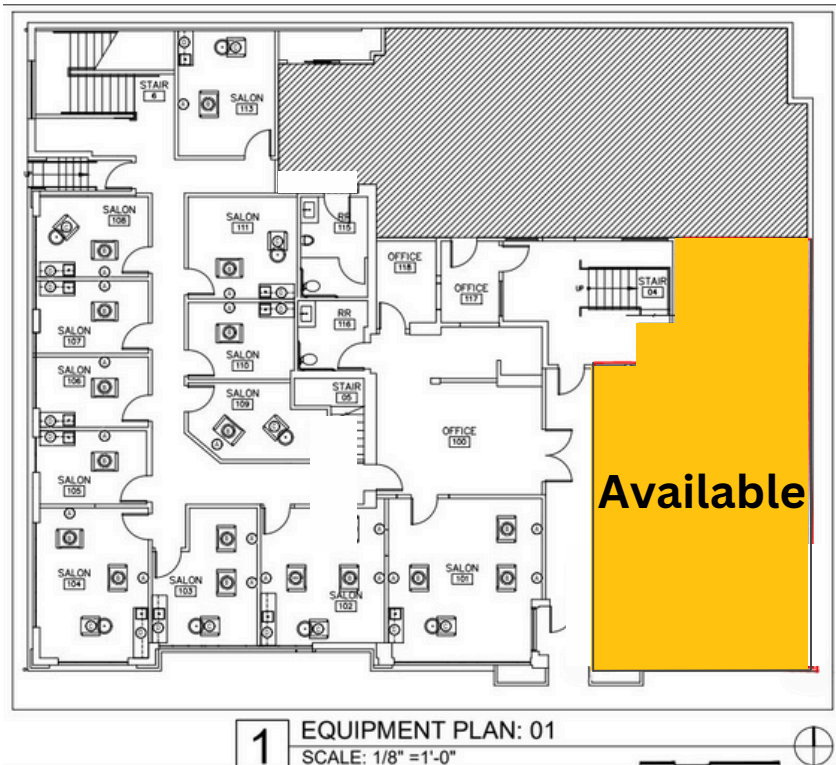
1150 Silverado Street

La Jolla, CA 92037



CAPITAL GROWTH
PROPERTIES, INC.

FLOOR PLAN – FIRST FLOOR



**Approximately 1,300 sq.ft. at the rate of
\$3.50 psf + utilities**

FOR LEASE

1150 Silverado Street
La Jolla, CA 92037



CAPITAL GROWTH
PROPERTIES, INC.



"Todd is an extremely professional Realtor that has helped clients of mine find commercial properties. Whenever I send a client his way, I know that they will be very well taken care of and I get nothing but rave reviews. I highly recommend Todd!" – Alan Cox



TODD LAW

Senior Vice President
tlaw@cgpinc.com
858.729.9305
CA DRE 01309241
WA DOL 27587

Capital Growth Properties, Inc.



1120 Silverado Street, Suite 200
La Jolla CA 92037



858.729.9300



www.cgpinc.com



@cgpinc