

**INDUSTRIAL FOR SUBLEASE**  
**9415-C ATLEE COMMERCE BLVD.**  
ASHLAND, VIRGINIA 23005



**2,945 SF INDUSTRIAL**

FULLY CONDITIONED WITH 1 DRIVE-IN

AVAILABLE  
IMMEDIATELY



# PROPERTY FEATURES



**2,945 SF**

TOTAL AVAILABLE SPACE  
TERM THROUGH JULY 31, 2029



**GREAT LOCATION**

1.4 MILES TO I-95



**CEILING**

16' CLEAR HEIGHT



**LOADING**

1 DRIVE-IN DOOR (10X10)



**HVAC**

FULLY CONDITIONED



**PARKING**

AMPLE PARKING AVAILABLE



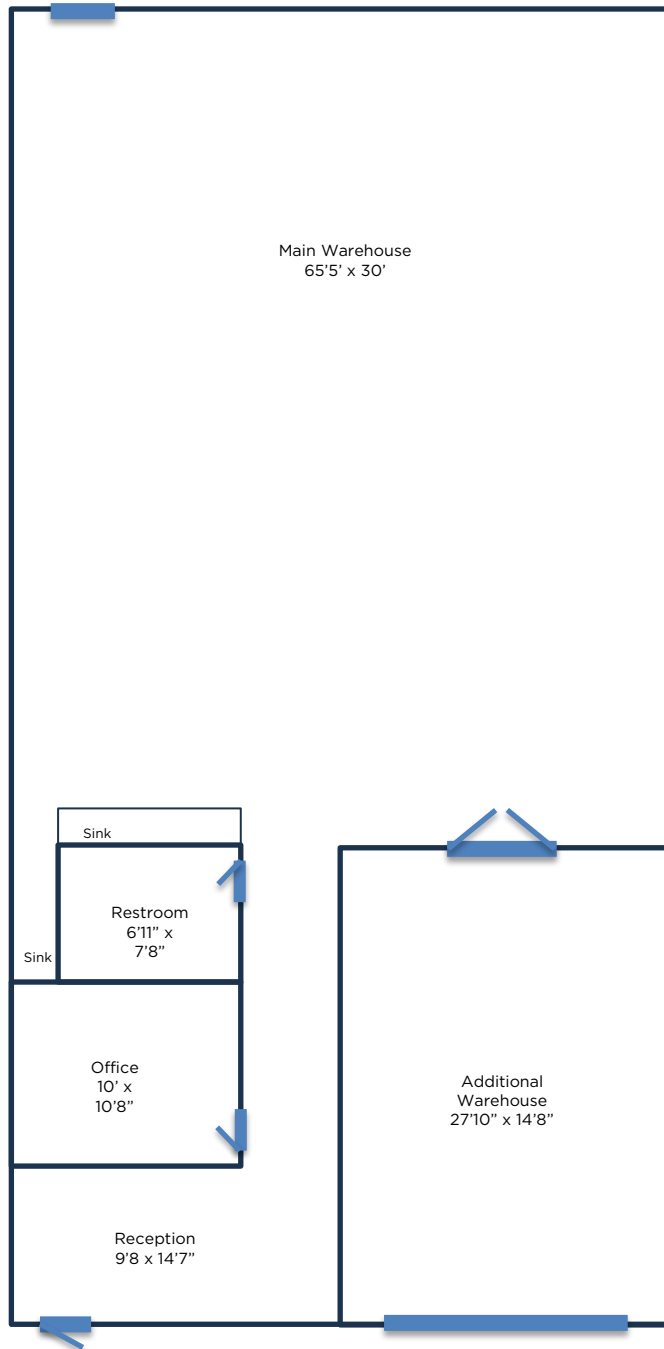
**TIMING**

AVAILABLE IMMEDIATELY

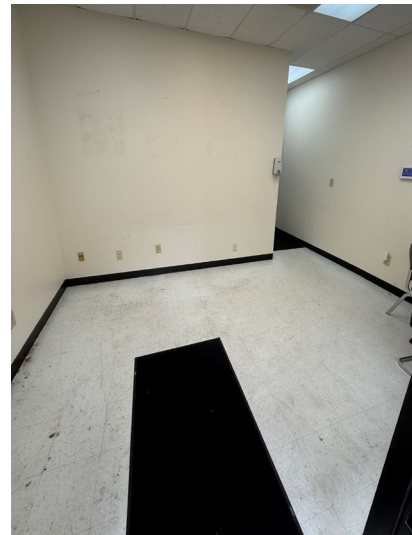




# PROPERTY PHOTOS



*\*Floorplan not to scale\**





# PROPERTY LOCATION



**CHRISSY CHAPPELL**  
Associate  
804 344 7197  
[chrissy.chappell@thalhimer.com](mailto:chrissy.chappell@thalhimer.com)



**CUSHMAN &  
WAKEFIELD**

**THALHIMER**

Thalhimer Center | 11100 W. Broad Street  
Glen Allen, VA 23060  
[www.thalhimer.com](http://www.thalhimer.com)

Independently Owned and Operated / A Member of the Cushman & Wakefield Alliance

Cushman & Wakefield | Thalhimer © 2025. No warranty or representation, express or implied, is made to the accuracy or completeness of the information contained herein, and same is submitted subject to errors, omissions, change of price, rental or other conditions, withdrawal without notice, and to any special listing conditions imposed by the property owner(s). As applicable, we make no representation as to the condition of the property (or properties) in question.