



THE
RANTSGROUP
COMMERCIAL REAL ESTATE

FOR LEASE

MEDICAL OFFICE SPACE FOR LEASE



615 LILLY ROAD NE, OLYMPIA, WA | LILLY ROAD MEDICAL BUILDING

LISTING INFORMATION

Class A Medical Office located adjacent to Providence St. Peter Hospital. The suite is currently configured with four exam rooms, a large waiting area with administrative space, a private office, and a break room. It could easily be reconfigured for additional exam rooms. The interior finishes are in excellent condition and move-in ready. This is the first publicly available suite at the Lilly Road Medical Building since it was constructed.

Generous Tenant Improvement (TI) allowance and/or financing for long-term leases. No NNN, Modified Gross Lease; tenant pays janitorial expenses for the premises and pro-rata share of utilities.

SUITE 175: 2,526 SF

\$42.00/SF
MODIFIED GROSS

CBA# 42393060



rants.group/615LillyRdNE_175

This information, while obtained from sources we deem reliable, is not guaranteed. It is provided without any representation, warranty or guarantee, expressed or implied as to its accuracy. Prospective buyer or tenant should conduct an independent investigation and verification of all matters deemed to be material, including, but not limited to, statements of income and expenses. Consult your attorney, accountant, or other professional advisor.

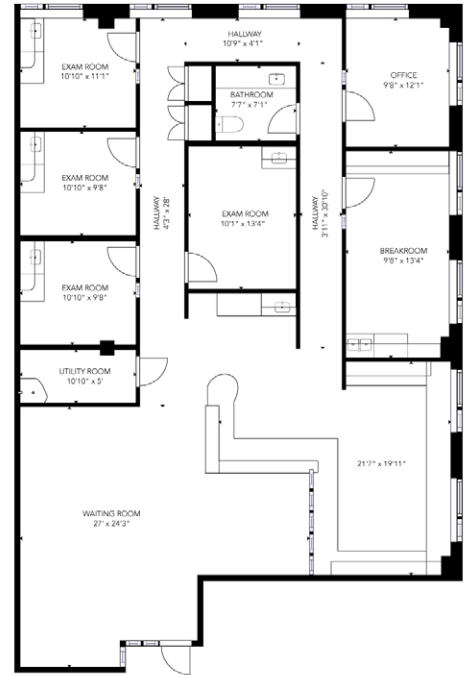
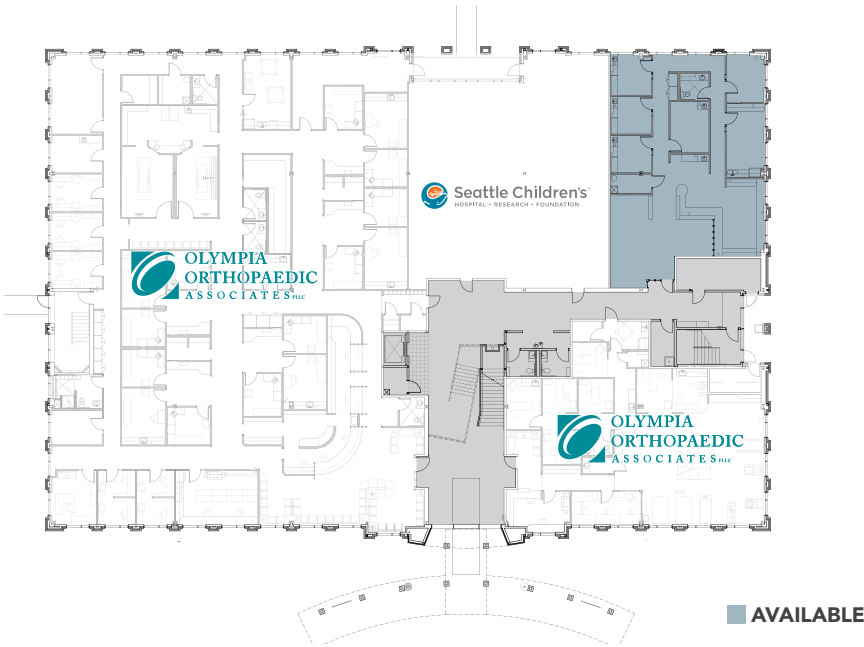


Zeke Rehn
MANAGING BROKER
(360) 915-5678
zeke@rantsgroup.com

360-943-8060
RANTSGROUP.com

615 LILLY ROAD NE, OLYMPIA, WA | LILLY ROAD MEDICAL BUILDING

SUITE 175: 2,526 SF



THESE FLOORPLANS ARE NOT TO SCALE
SIZES AND DIMENSIONS ARE APPROXIMATE, ACTUAL MAY VARY.



CONTACT

Zeke Rehn
MANAGING BROKER
(360) 915-5678
zeke@rantsgroup.com



rantsgroup.com/615LillyRdNE_175

This information, while obtained from sources we deem reliable, is not guaranteed. It is provided without any representation, warranty or guarantee, expressed or implied as to its accuracy. Prospective buyer or tenant should conduct an independent investigation and verification of all matters deemed to be material, including, but not limited to, statements of income and expenses. Consult your attorney, accountant, or other professional advisor.

360-943-8060 | **RANTSGROUP.com**

615 LILLY ROAD NE, OLYMPIA, WA | LILLY ROAD MEDICAL BUILDING



CONTACT

Zeke Rehn
MANAGING BROKER
(360) 915-5678
zeke@rantsgroup.com



rants.group/615LillyRdNE_175

This information, while obtained from sources we deem reliable, is not guaranteed. It is provided without any representation, warranty or guarantee, expressed or implied as to its accuracy. Prospective buyer or tenant should conduct an independent investigation and verification of all matters deemed to be material, including, but not limited to, statements of income and expenses. Consult your attorney, accountant, or other professional advisor.

360-943-8060 | RANTSGROUP.com