



Glasgow Medical Center

**2600 Glasgow Avenue
Newark, DE 19702**

Finished Medical Office Suites

Property Information

Glasgow Medical Center is a 109,000 +/- SF medical office complex located on a 12-acre site along Glasgow Avenue in Newark, DE. The medical offices are served by six main entries with handicap access and three elevators. Located just minutes from I-95, this property provides convenient access and ample parking for tenants and visitors. With on-site facility management, tenants can expect exceptional service and support.

Current Availabilities

Suite 100:	6,642 +/- SF
Suite 104:	2,661 +/- SF
Suite 106:	2,040 +/- SF
Suite 201:	1,836 +/- SF
Suite 204:	3,064 +/- SF
Suite 206:	2,263 +/- SF
Suite 222:	1,800 +/- SF

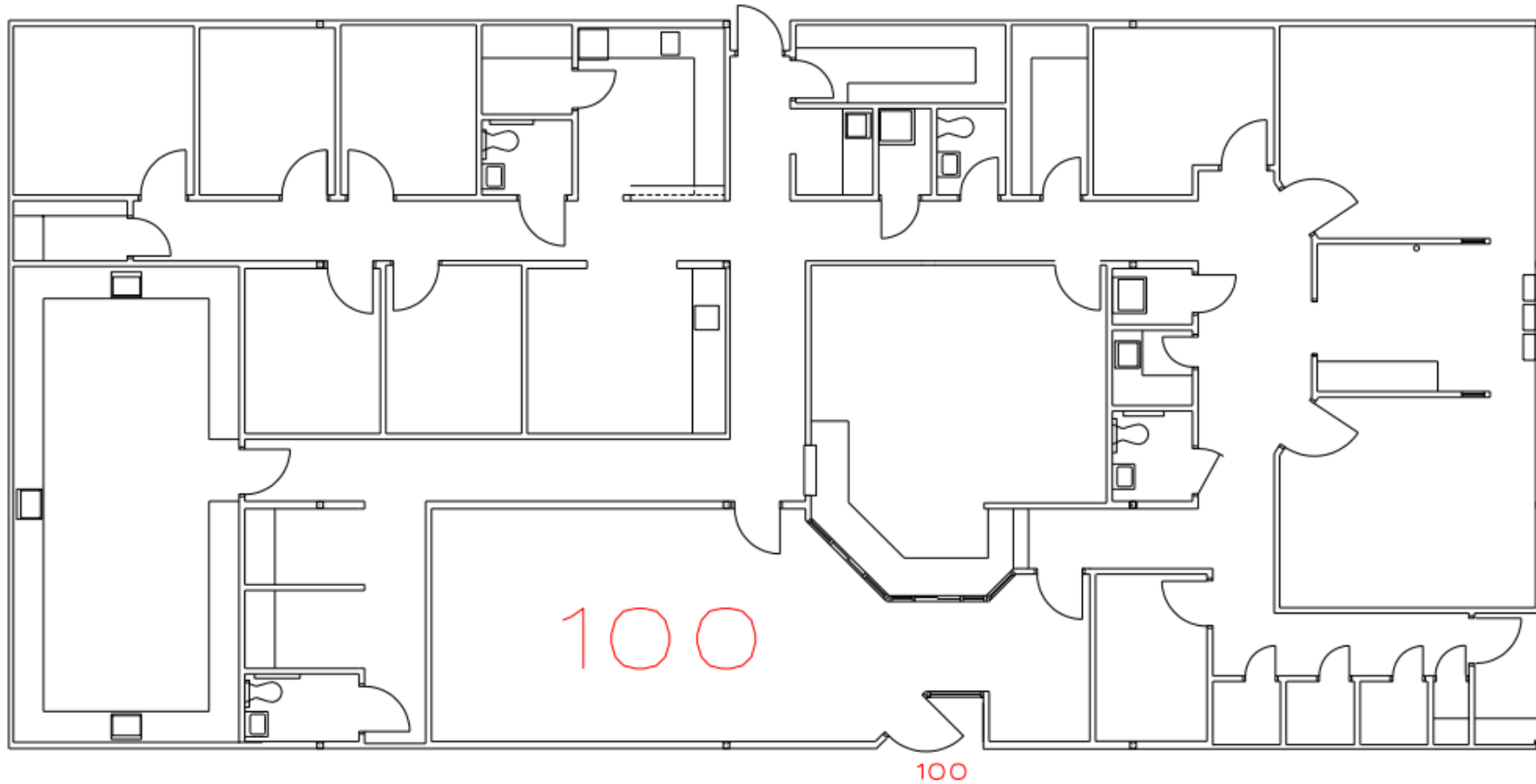
David R. Morrison, CCIM

o: 302 221 7226

e: davemorrison@emoryhill.com

Suite 100 - 6,642 +/- SF

Glasgow Medical Center



📍 10 Corporate Circle, Ste 100, New Castle, DE 19720

📞 302 322 9500

🌐 naiemoryhill.com

David R. Morrison, CCIM

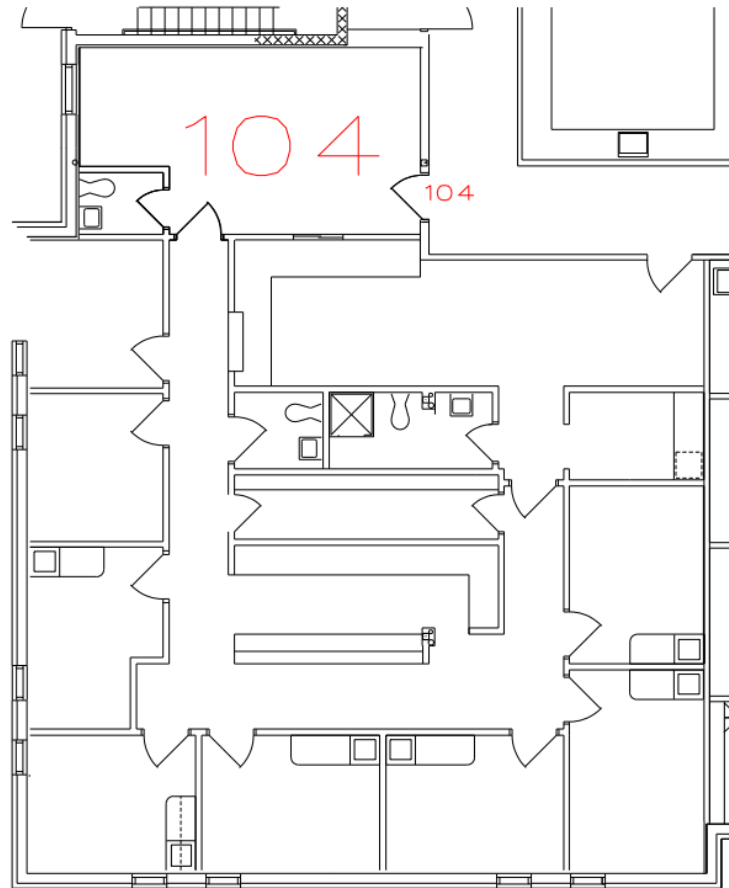
o: 302 221 7226

e: davemorrison@emoryhill.com



Suite 104 - 2,661 +/- SF

Glasgow Medical Center



📍 10 Corporate Circle, Ste 100, New Castle, DE 19720

☎ 302 322 9500

🌐 naiemoryhill.com

David R. Morrison, CCIM

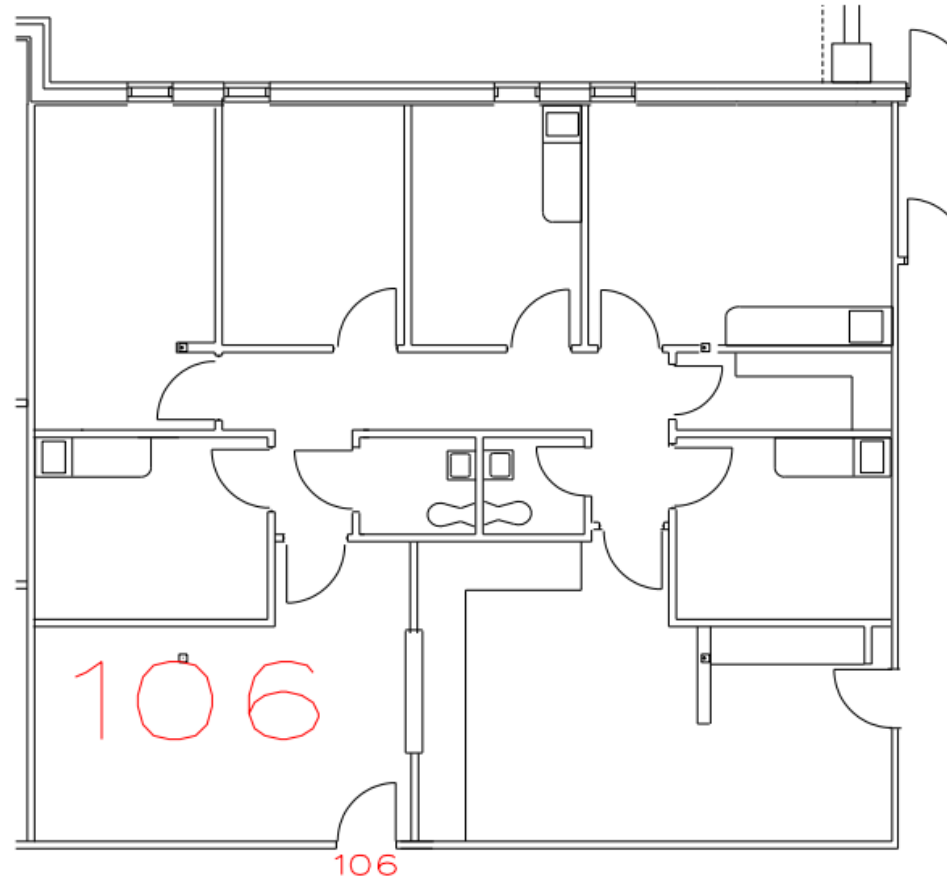
o: 302 221 7226

e: davemorrison@emoryhill.com



Suite 106 - 2,040 +/- SF

Glasgow Medical Center



📍 10 Corporate Circle, Ste 100, New Castle, DE 19720

☎ 302 322 9500

🌐 naemoryhill.com

David R. Morrison, CCIM

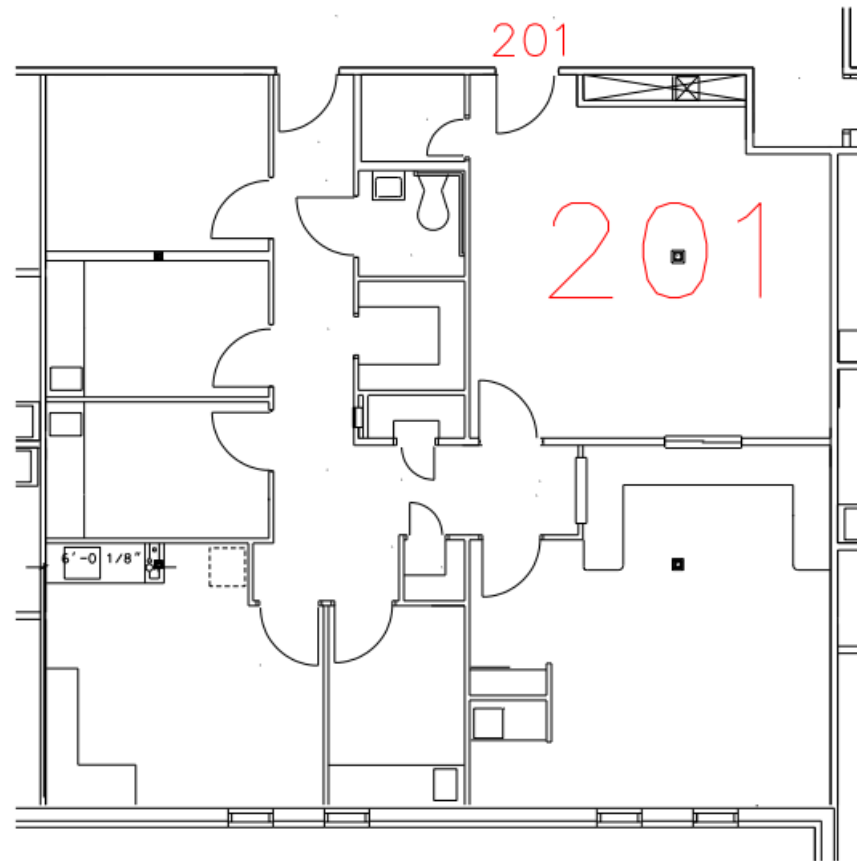
o: 302 221 7226

e: davemorrison@emoryhill.com

NAI Emory Hill

Suite 201 - 1,836 +/- SF

Glasgow Medical Center



📍 10 Corporate Circle, Ste 100, New Castle, DE 19720

☎ 302 322 9500

🌐 naemoryhill.com

David R. Morrison, CCIM

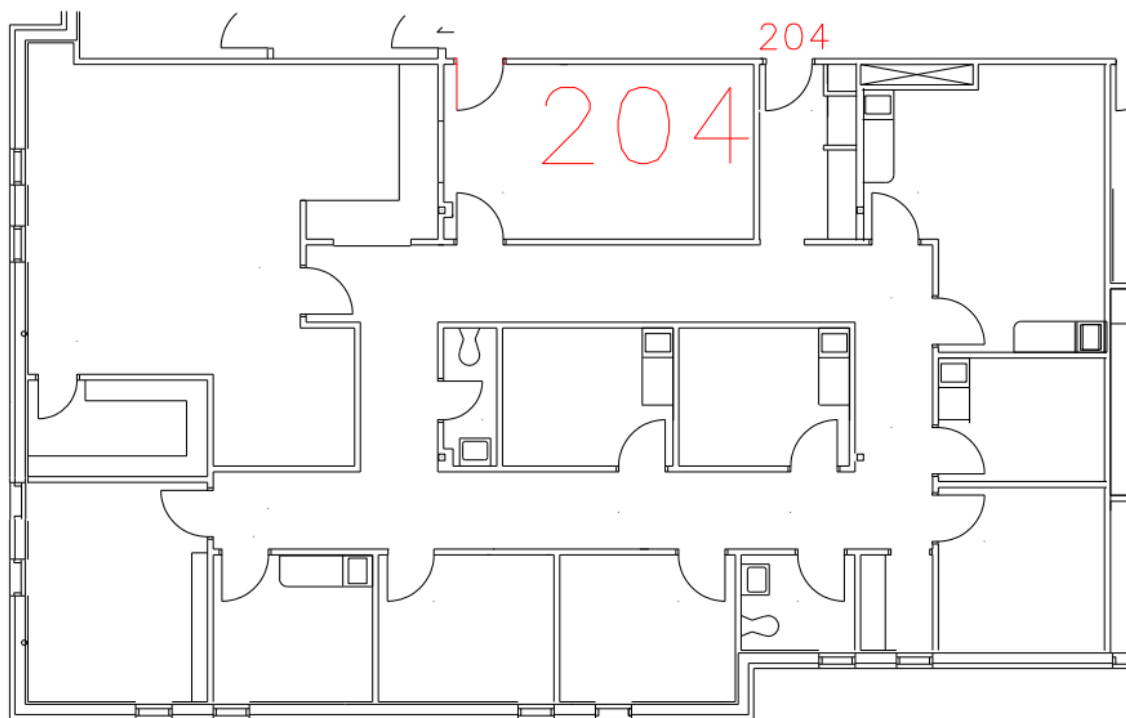
o: 302 221 7226

e: davemorrison@emoryhill.com

NAI Emory Hill

Suite 204 - 3,064 +/- SF

Glasgow Medical Center



📍 10 Corporate Circle, Ste 100, New Castle, DE 19720

☎ 302 322 9500

🌐 naiemoryhill.com

David R. Morrison, CCIM

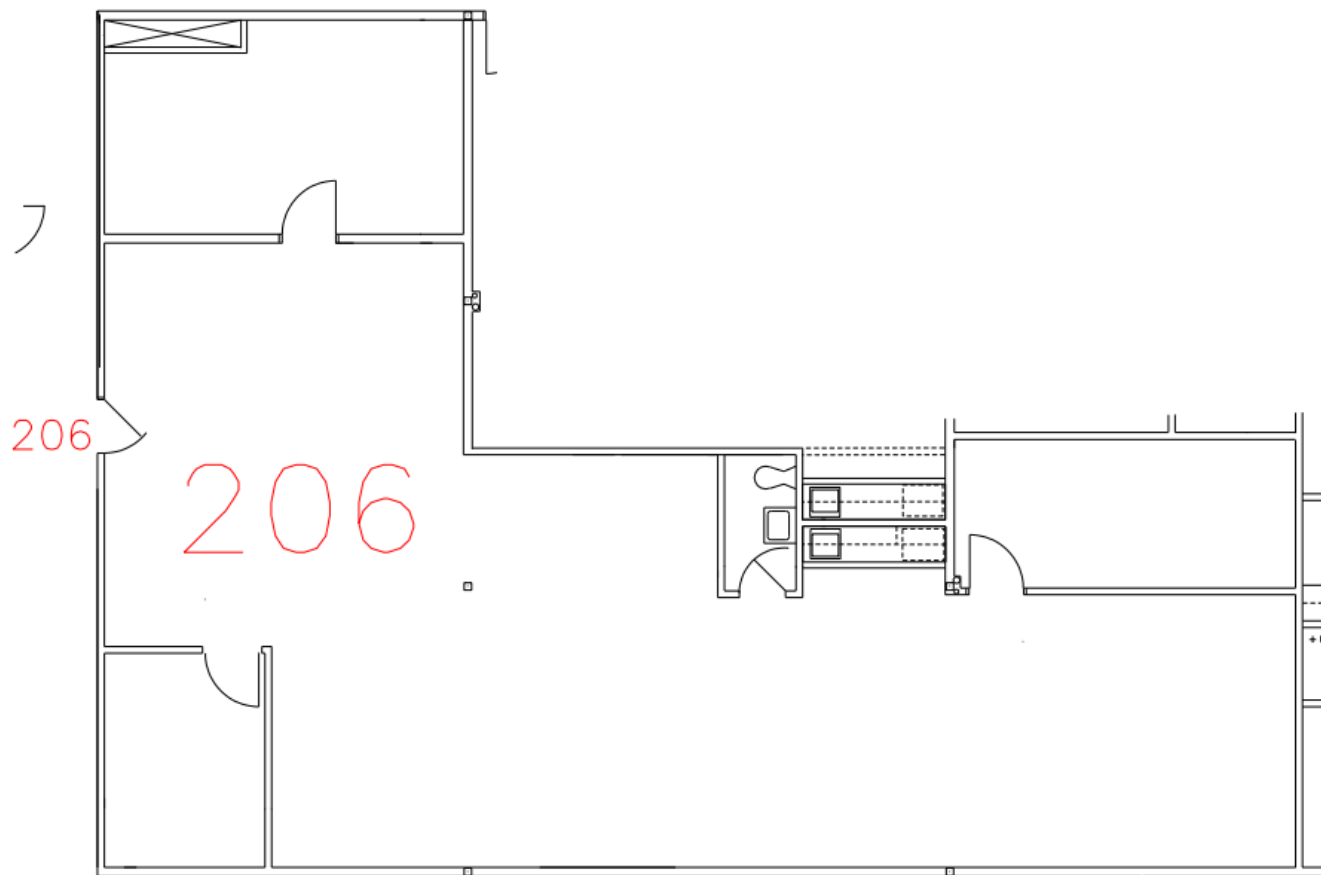
o: 302 221 7226

e: davemorrison@emoryhill.com



Suite 206 - 2,263 +/- SF

Glasgow Medical Center



10 Corporate Circle, Ste 100, New Castle, DE 19720

302 322 9500

naiemoryhill.com

David R. Morrison, CCIM

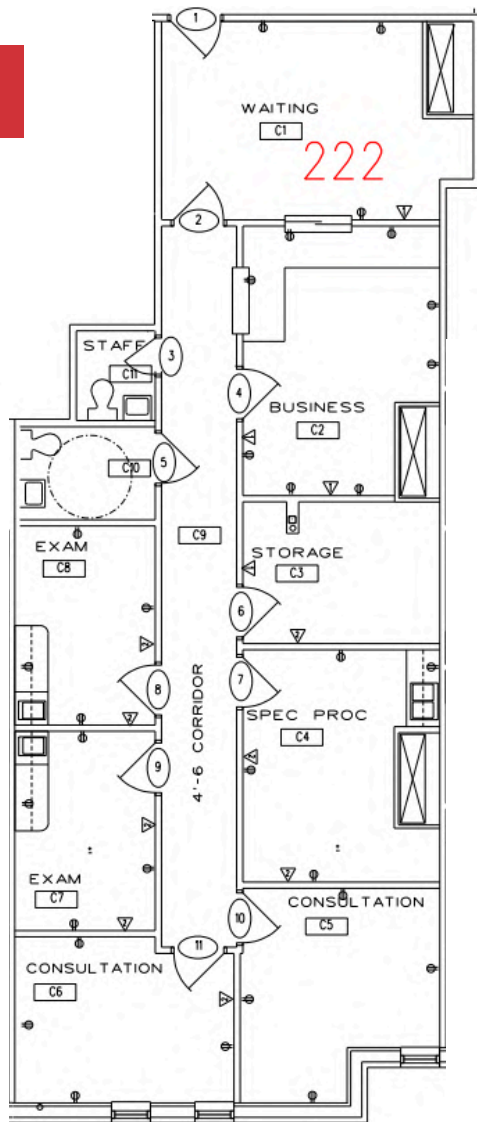
o: 302 221 7226

e: davemorrison@emoryhill.com

NAI Emory Hill

Suite 222 - 1,800 +/- SF

Glasgow Medical Center



10 Corporate Circle, Ste 100, New Castle, DE 19720

302 322 9500

naemoryhill.com

David R. Morrison, CCIM

o: 302 221 7226

e: davemorrison@emoryhill.com



Glasgow Medical Center



📍 10 Corporate Circle, Ste 100, New Castle, DE 19720

☎ 302 322 9500

🌐 naemoryhill.com

David R. Morrison, CCIM

o: 302 221 7226

e: davemorrison@emoryhill.com

NA Emory Hill

NO WARRANTY OR REPRESENTATION, EXPRESS OR IMPLIED, IS MADE AS TO THE ACCURACY OF THE INFORMATION CONTAINED HEREIN, AND THE SAME IS SUBMITTED SUBJECT TO ERRORS, OMISSIONS, CHANGE OF PRICE, RENTAL OR OTHER CONDITIONS, PRIOR SALE, LEASE OR FINANCING, OR WITHDRAWAL WITHOUT NOTICE, AND OF ANY SPECIAL LISTING CONDITIONS IMPOSED BY OUR PRINCIPALS NO WARRANTIES OR REPRESENTATIONS ARE MADE AS TO THE CONDITION OF THE PROPERTY OR ANY HAZARDS CONTAINED THEREIN ARE ANY TO BE IMPLIED.

Glasgow Medical Center

Location Advantages

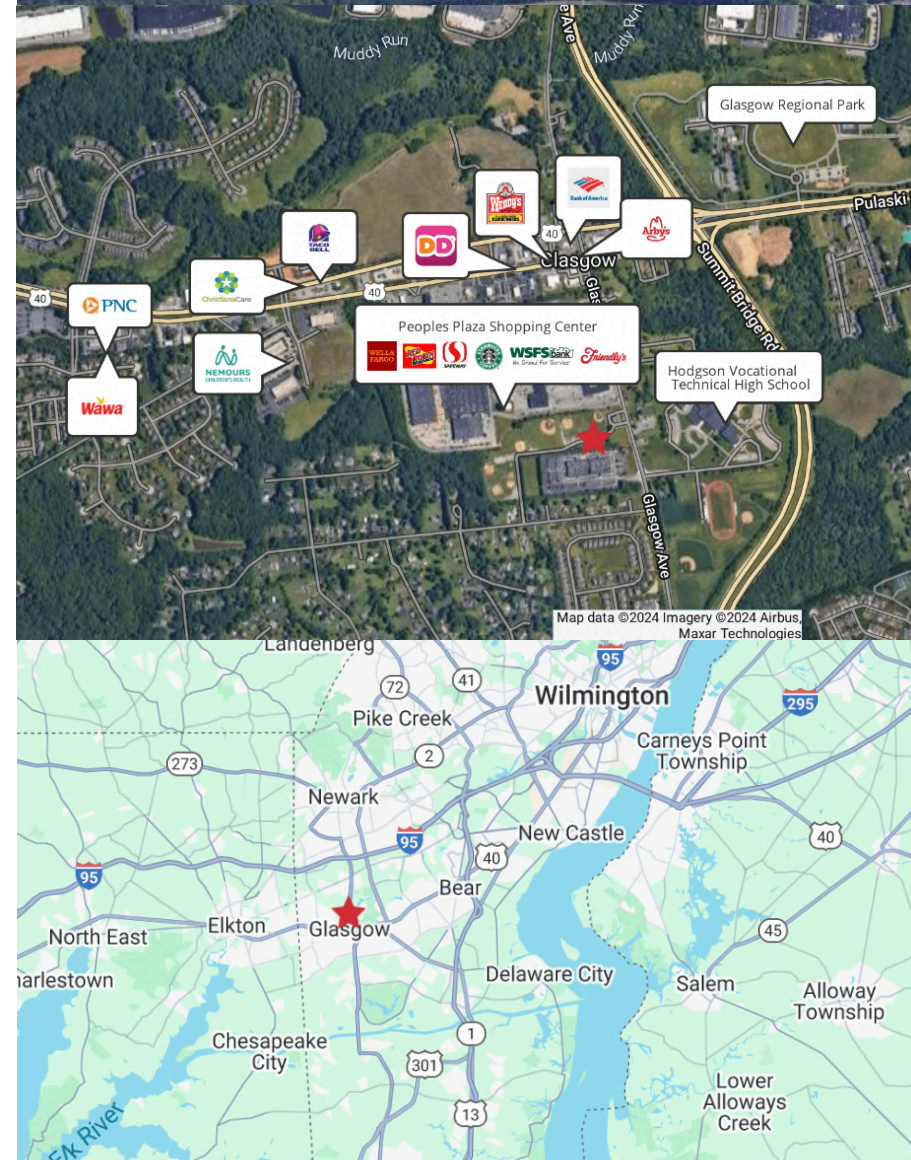
Located in the heart of Newark, DE, just minutes away from the University of Delaware, ChristianaCare's Health & Technology Center, Nemours Children's Health-Newark, Peoples Plaza Shopping Center, and Glasgow Park. The area is conveniently located near major highways, providing easy access to I-95 and Route 273.

Driving Distances

Wilmington CBD	14 miles
Philadelphia	45 miles
Baltimore	66 miles

Demographics

	1 mile	3 miles	5 miles
Population	4,111	42,300	406,681
Workday Population	4,299	32,451	94,344
Healthcare Workers	283	2,661	5,357



📍 10 Corporate Circle, Ste 100, New Castle, DE 19720

☎ 302 322 9500

🌐 naiemoryhill.com

David R. Morrison, CCIM

o: 302 221 7226

e: davemorrison@emoryhill.com

