



8455 BEVERLY BOULEVARD

LOS ANGELES

OFFICE / MEDICAL

± 500 to 2,000 SQFT

PROPERTY OVERVIEW



USE

SIZE

PRICE

PARKING

Office/Medical ± 500 to 2,000 SF \$ 3.30/SF, Modified Gross Available at \$150 per space

AVAILABLE SPACES

3RD FLOOR

Suite 305	± 596 RSF
-----------	-----------

4TH FLOOR

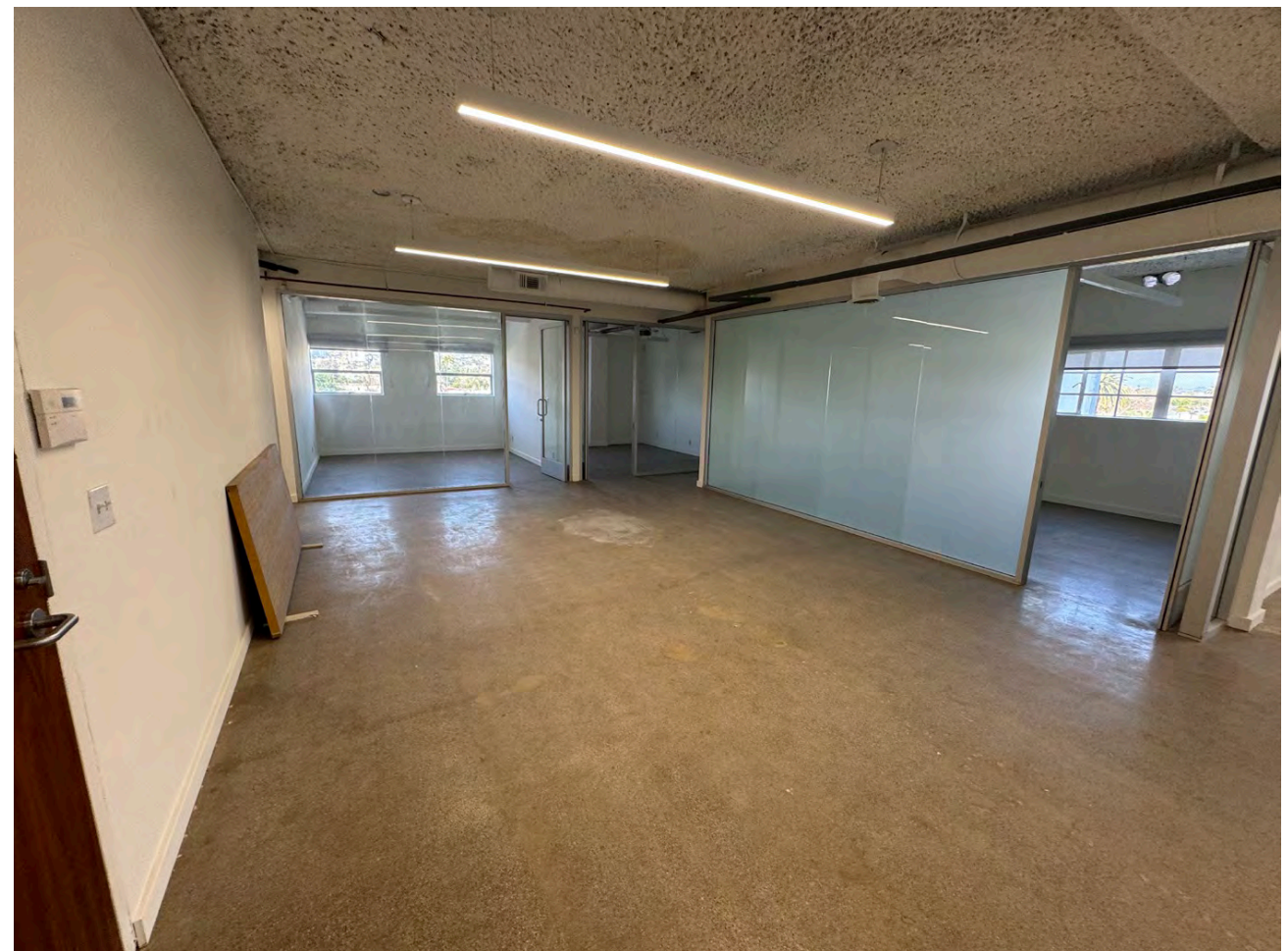
Suite 405	± 1,700 RSF
-----------	-------------

Suite 409	± 500 RSF
-----------	-----------

5TH FLOOR

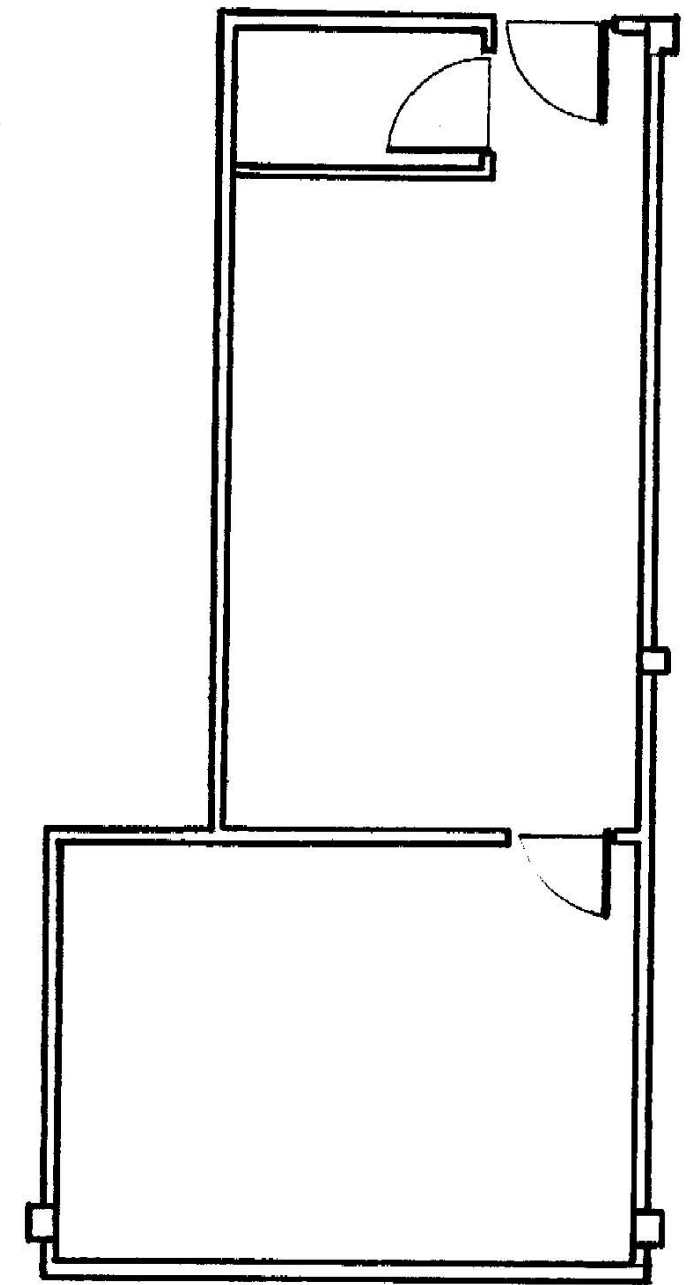
Suite 505	± 1,922 RSF
-----------	-------------

±



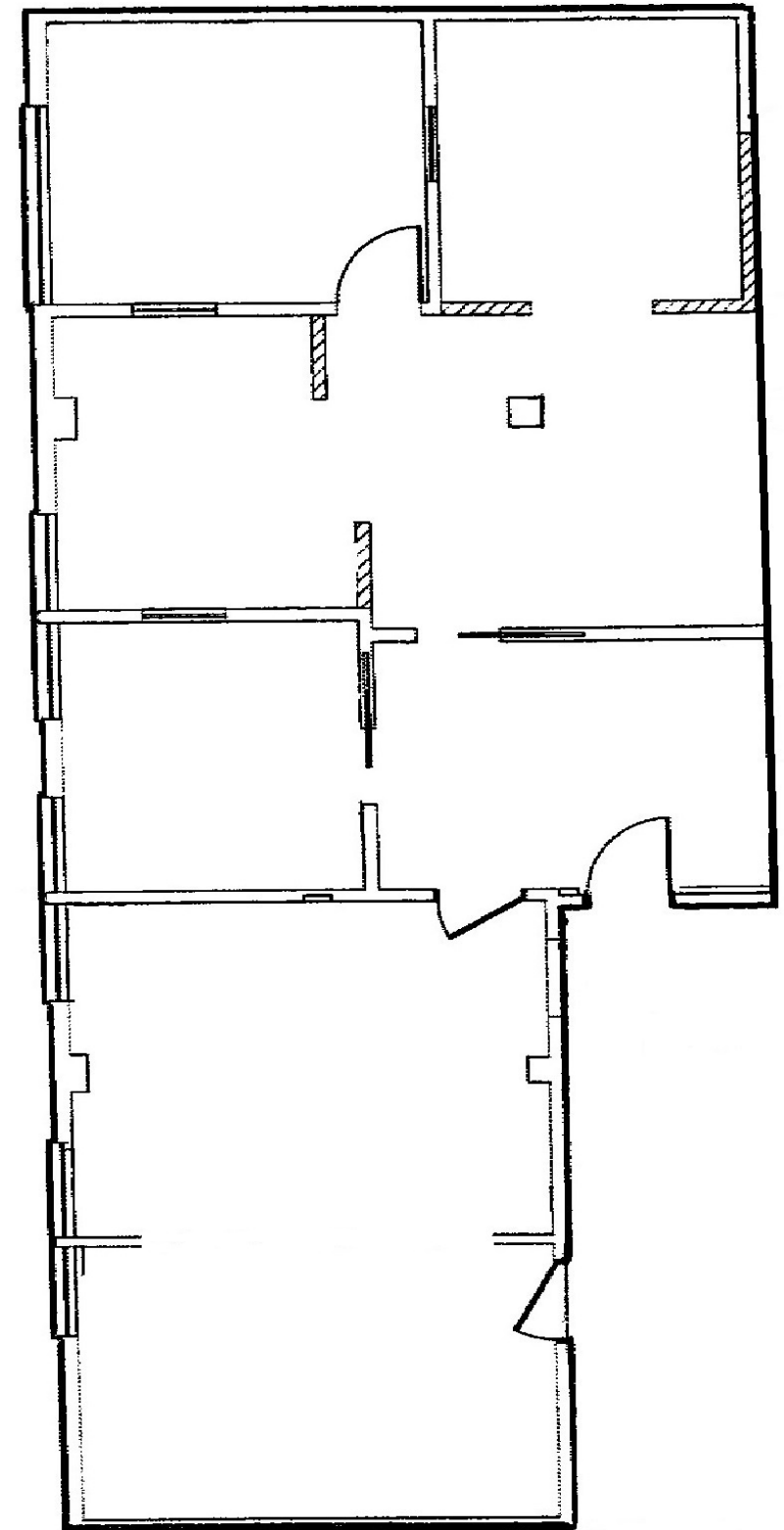
SUITE 305

SIZE / ± 596 RSF



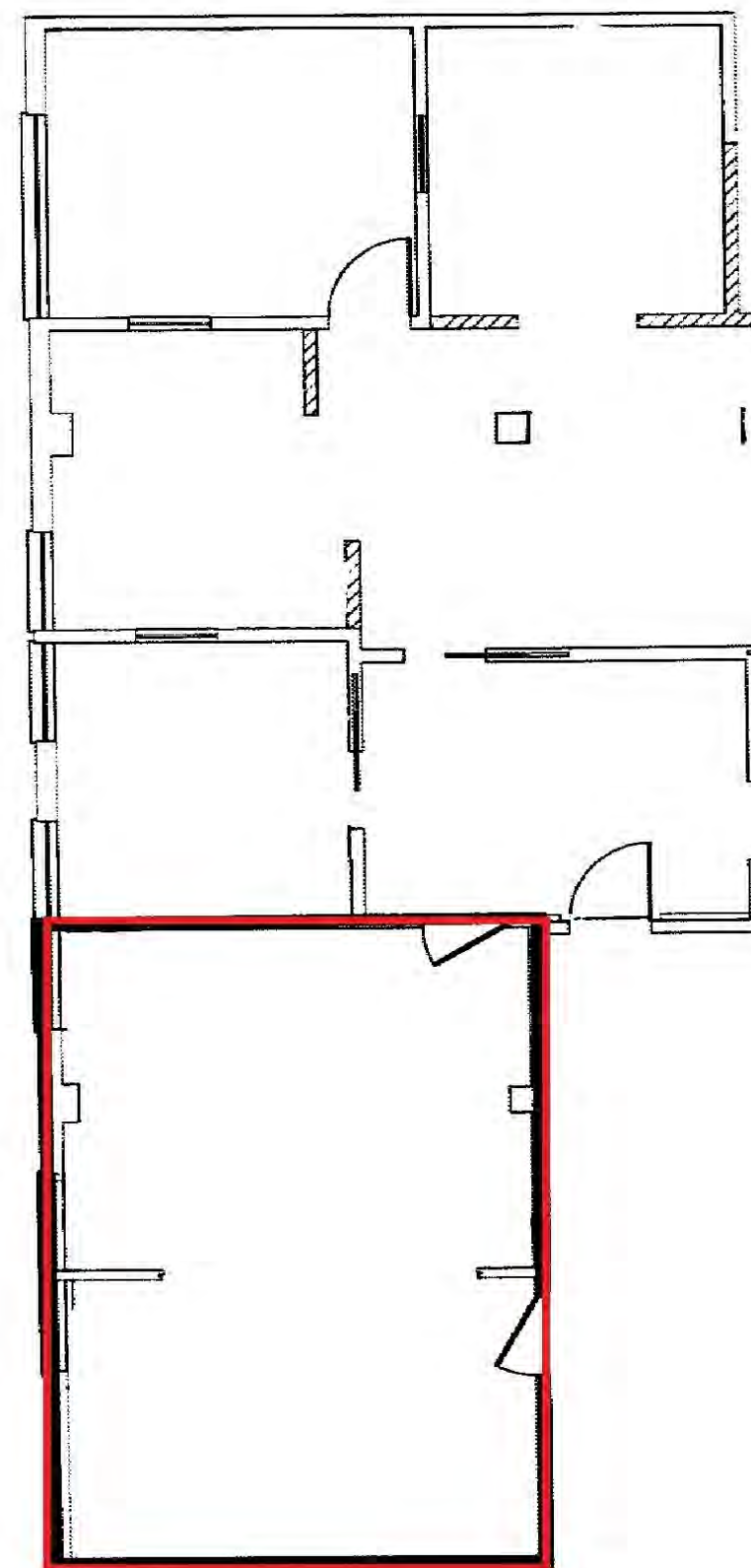
SUITE 405

SIZE / ± 1,700 RSF



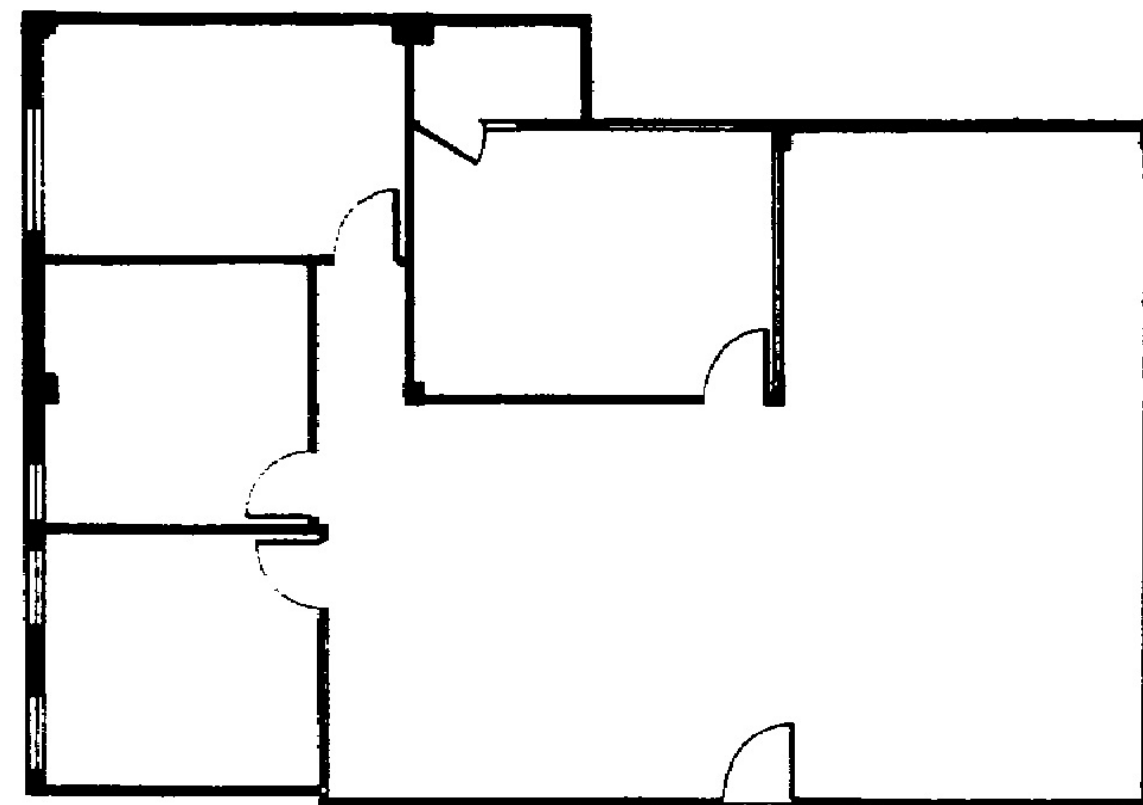
SUITE 409

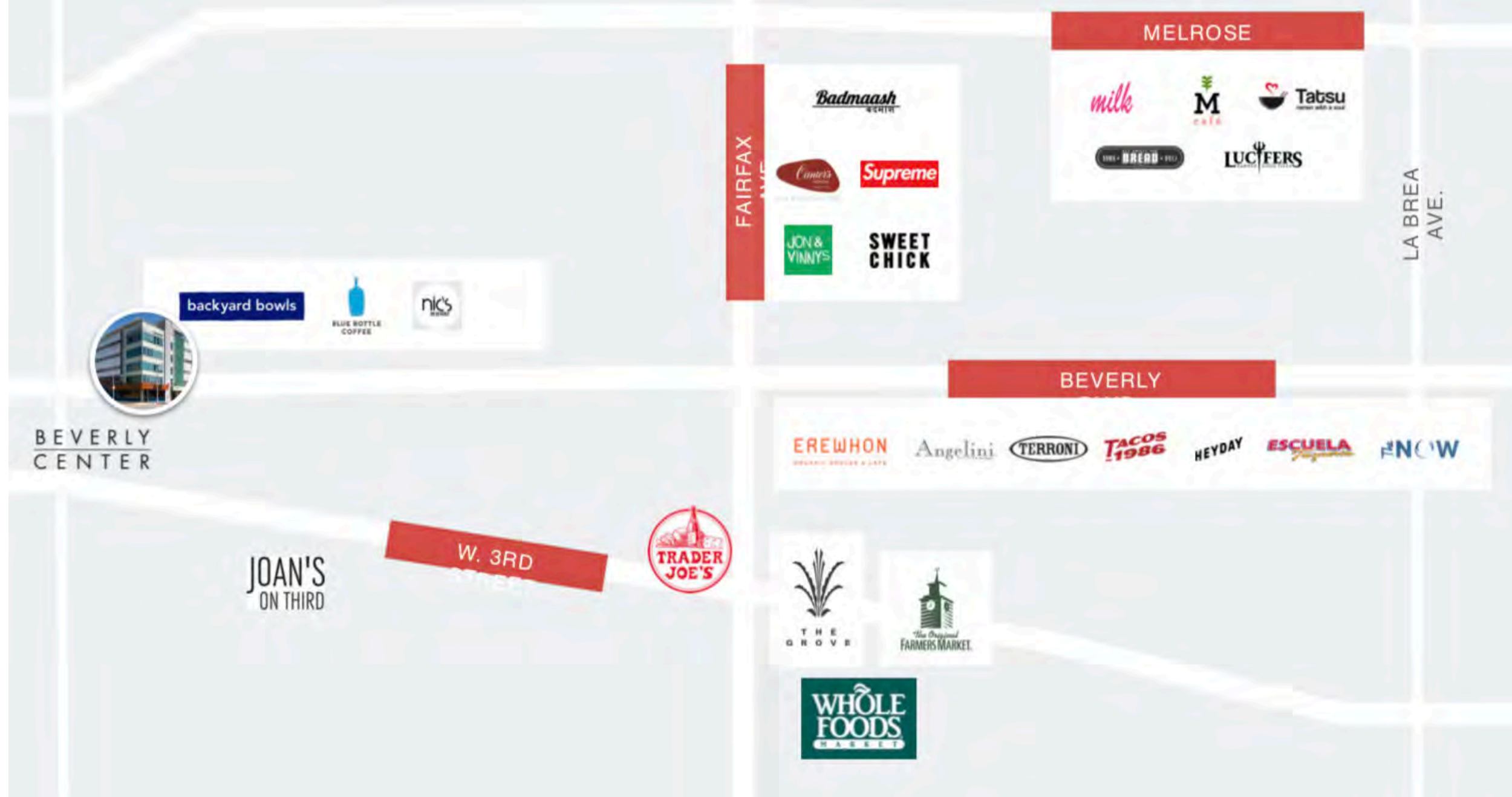
SIZE / ± 500 RSF



SUITE 505

SIZE / \pm 1,922 RSF





IN THE AREA

Backyard Bowls
 Blue Bottle Coffee
 Joan's on Third
 Trader Joe's

Badmaash
 Jon & Vinnys
 Sweet Chick
 Whole Foods

Erewhon
 The Grove
 Farmers Market
 Angelini Osteria
 Terroni
 Heyday

Escuela Taqueria
 The Now
 Tatsu
 Lucifers
 Canter's



CONTACT US

JACK RAVAN

President

T: 323.782.1270

E: jackravan@southparkgroup.com

Lic. 00890189

MEGAN NASSIR

Associate

T: 323.782.1264

E: megan@southparkgroup.com

Lic. 02179218



SOUTH PARK GROUP

WWW.SOUTHPARKGROUP.COM