

# Warehouse Space

209 S Redmond Rd | Jacksonville, AR 72076



FOR LEASE



## PROPERTY HIGHLIGHTS

- 7,800 ± SF Available
- \$5.50/SF NNN
- 1 Dock
- 2 Drive-Ins
- 16' Clear Heights
- Easy access to Hwy 67 (55,000 VPD)
- Surrounded by multiple industrial users and major retailers

FOR MORE INFORMATION  
PLEASE CONTACT:

**COLBY HOAGLAND**

303 218 8260  
choagland@sagepartners.com

**ALEX BENNETT**

501 350 7443  
abennett@sagepartners.com

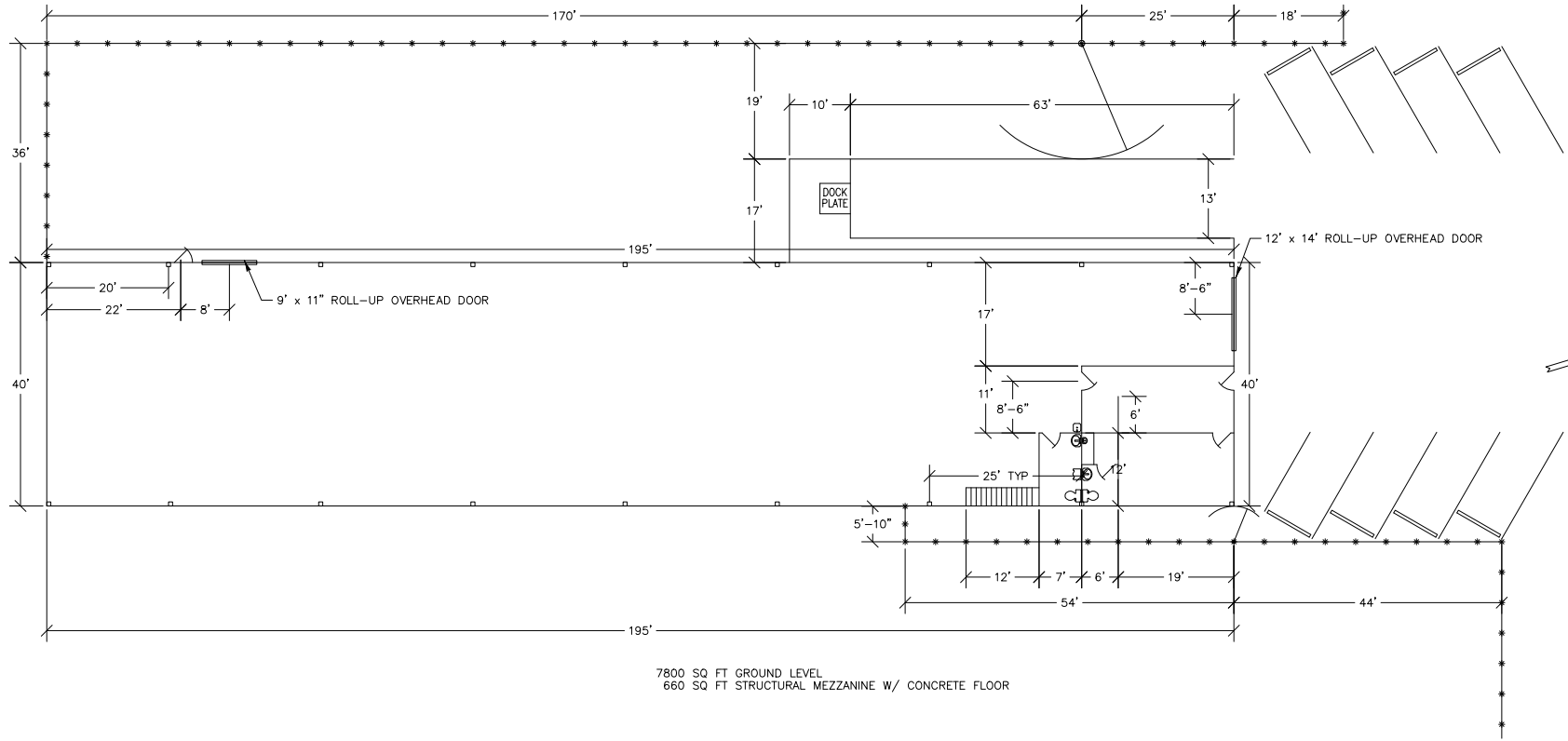
501 716 5511

[sagepartners.com](https://www.sagepartners.com)

[CLICK HERE FOR VIRTUAL TOUR](#)




\*information deemed reliable but not guaranteed



7800 SQ FT GROUND LEVEL  
660 SQ FT STRUCTURAL MEZZANINE W/ CONCRETE FLOOR

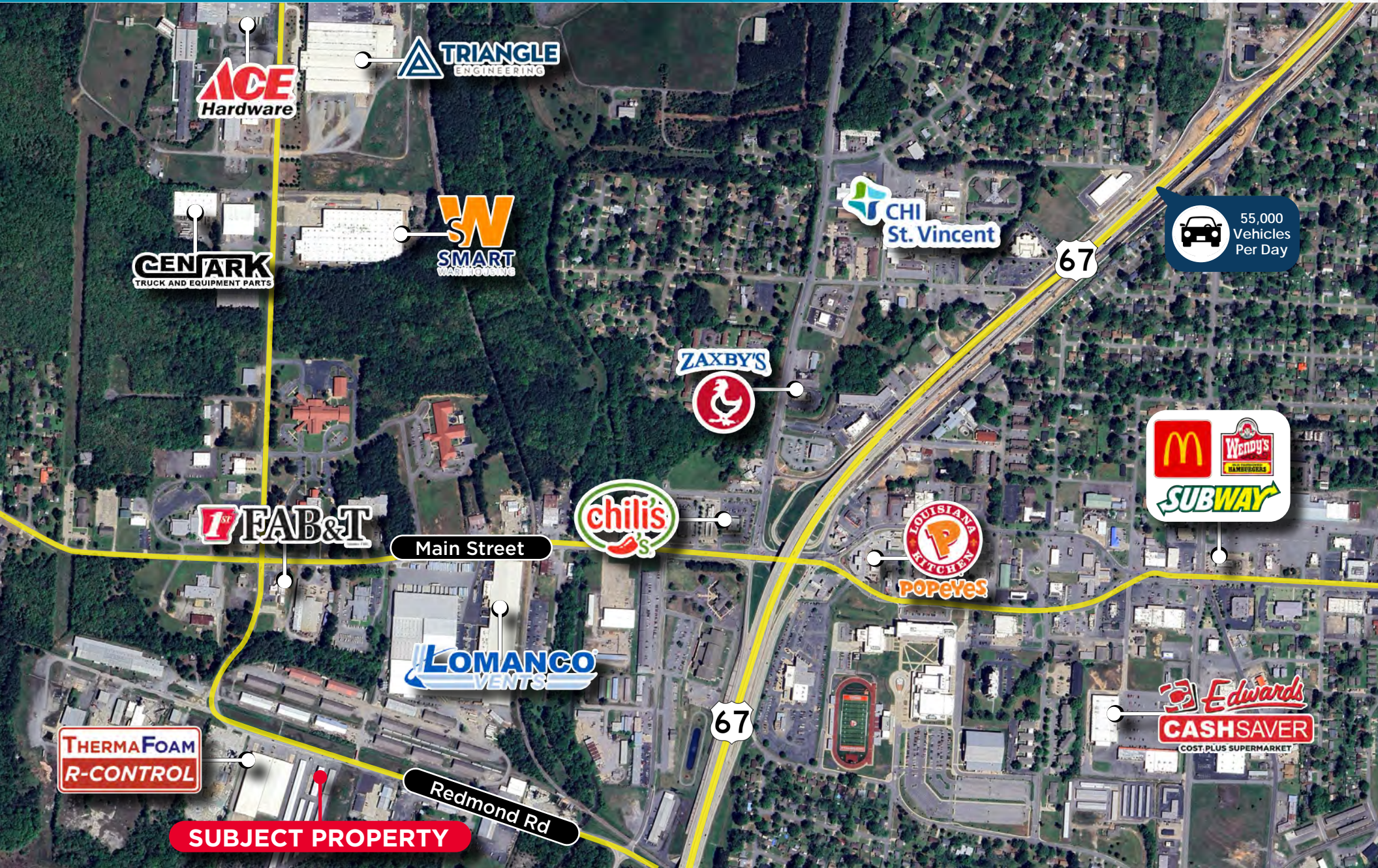
SOUTH REDMOND ROAD



 <b>TRIANGLE ENGINEERING INC.</b>	209 S REDMOND ROAD CAMPBELL'S INDUSTRIAL SUBDIVISION	
	BLDG209	
DR. BY: TOM KING	CKD.	APP.
SHEET 1 OF 1	1" = 10' 17 MAY 2019	



# AERIAL MAP 209 S REDMOND RD | JACKSONVILLE, AR 72076



55,000  
Vehicles  
Per Day

**SUBJECT PROPERTY**

Main Street

Redmond Rd

67

67

**ACE**  
Hardware

**TRIANGLE**  
ENGINEERING

**CENARK**  
TRUCK AND EQUIPMENT PARTS

**SMART**  
WASHROOMS

**CHI**  
St. Vincent

**ZAXBY'S**

**FAB & T**

**chili's**

**LOUISIANA**  
PERCHES  
**POPEYES**

**McDonald's**  
**Wendy's**  
HAMBURGERS  
**SUBWAY**

**LOMANGO**  
VENTS

**THERMAFOAM**  
R-CONTROL

**Edwards**  
**CASHSAVER**  
COST PLUS SUPERMARKET