

885 Flatbush Avenue

Southeast Corner of Church Avenue, Brooklyn



WE ARE PLEASED TO OFFER THE FOLLOWING PRIME OFFICE SPACE FOR LEASE:

- | | |
|-----------------|---|
| Space: | Second Floor: 8,000 rentable sq. ft. (divisible)
Third Floor: 8,000 rentable sq. ft. (divisible) |
| Asking Rent: | \$35 per rentable sq. ft. modified gross |
| Ceiling Height: | Approximately 10 feet |
| Possession: | Immediate |
| Neighbors: | Citibank, Santander Bank, Chase, Target, CityMD, CVS, Prospect Park, Erasmus Hall HS Academy for College Preparation, P.S. 6, and Success Academy |
| Comments: | <ul style="list-style-type: none">• New lobby and elevator in place• Within three blocks of multiple subway lines (2, 5, B, Q) and Prospect Park• Ownership will consider work for qualified tenants• Ideal for any type of office, medical or educational use |

Matthew Gorman

212.251.0626

mgorman@aspire-associates.com

Christopher Bruggers

212.644.5015

cbruggers@aspire-associates.com

Exclusive Agent

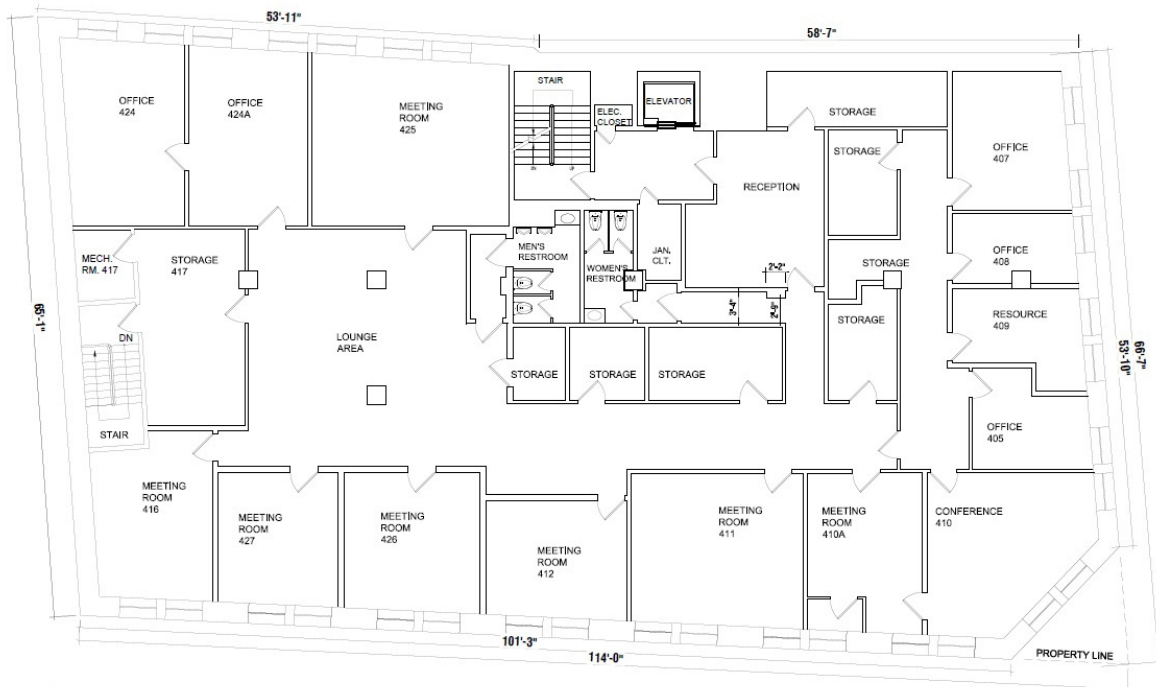
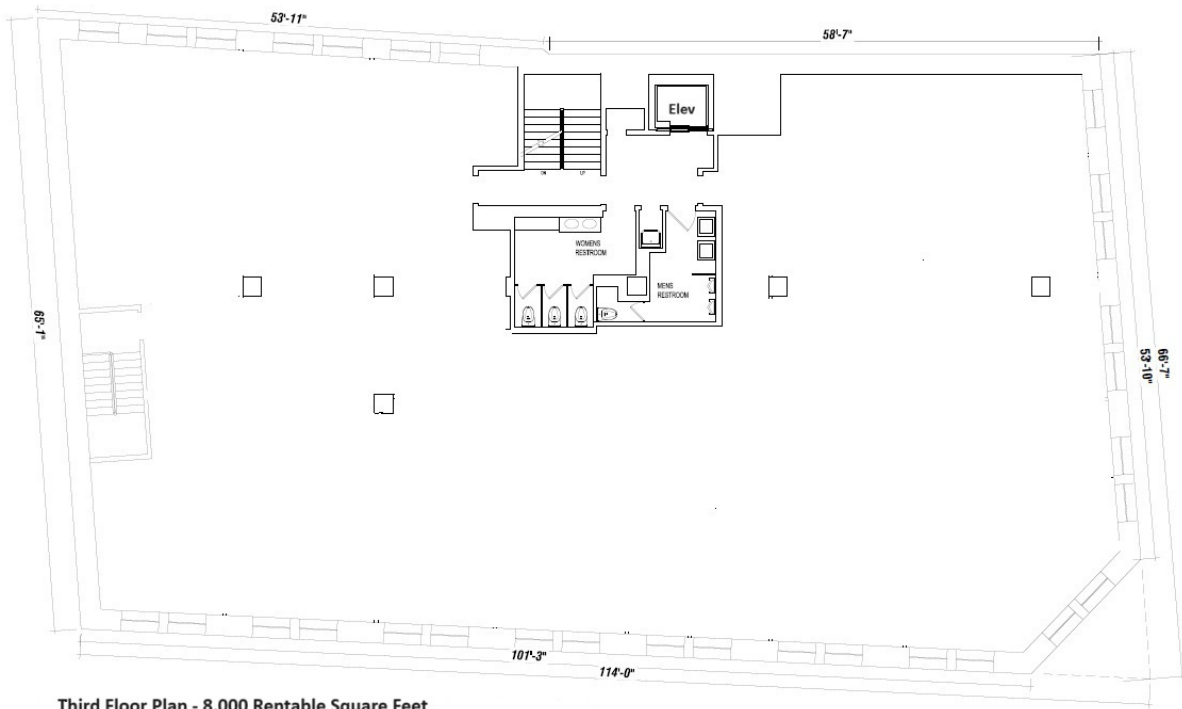
ASPIRE
ASSOCIATES

Aspire Associates LLC - Licensed Real Estate Broker

The information is from sources deemed reliable, however, we have not verified its accuracy, and make no representation about it. It is submitted subject to the possibility of errors, omissions, change of price, rental or other conditions, prior sale, lease or financing, or withdrawal without notice.

885 FLATBUSH AVENUE, BROOKLYN, NY

Southeast Corner of Church Avenue



Matthew Gorman

212.251.0626

mgorman@aspire-associates.com

Christopher Bruggers

212.644.5015

cbruggers@aspire-associates.com

Exclusive Agent

ASPIRE
ASSOCIATES

Aspire Associates LLC - Licensed Real Estate Broker

The information is from sources deemed reliable, however, we have not verified its accuracy, and make no representation about it. It is submitted subject to the possibility of errors, omissions, change of price, rental or other conditions, prior sale, lease or financing, or withdrawal without notice.