

OFFICE PROPERTY FOR LEASE

16 Lancaster Ave, Ardmore, PA, 19003

7,000 SF BUILDING, OFFICE SUITES

180-1500 SF AVAILABLE



The information contained herein has been obtained through sources deemed reliable by FRANKLIN PENN REAL ESTATE but cannot be guaranteed for accuracy. We recommend that any information which is of special interest, should be obtained through independent verification. All measurements are approximate. Map Data @ 2024 Google | AADT provided by DVRPC



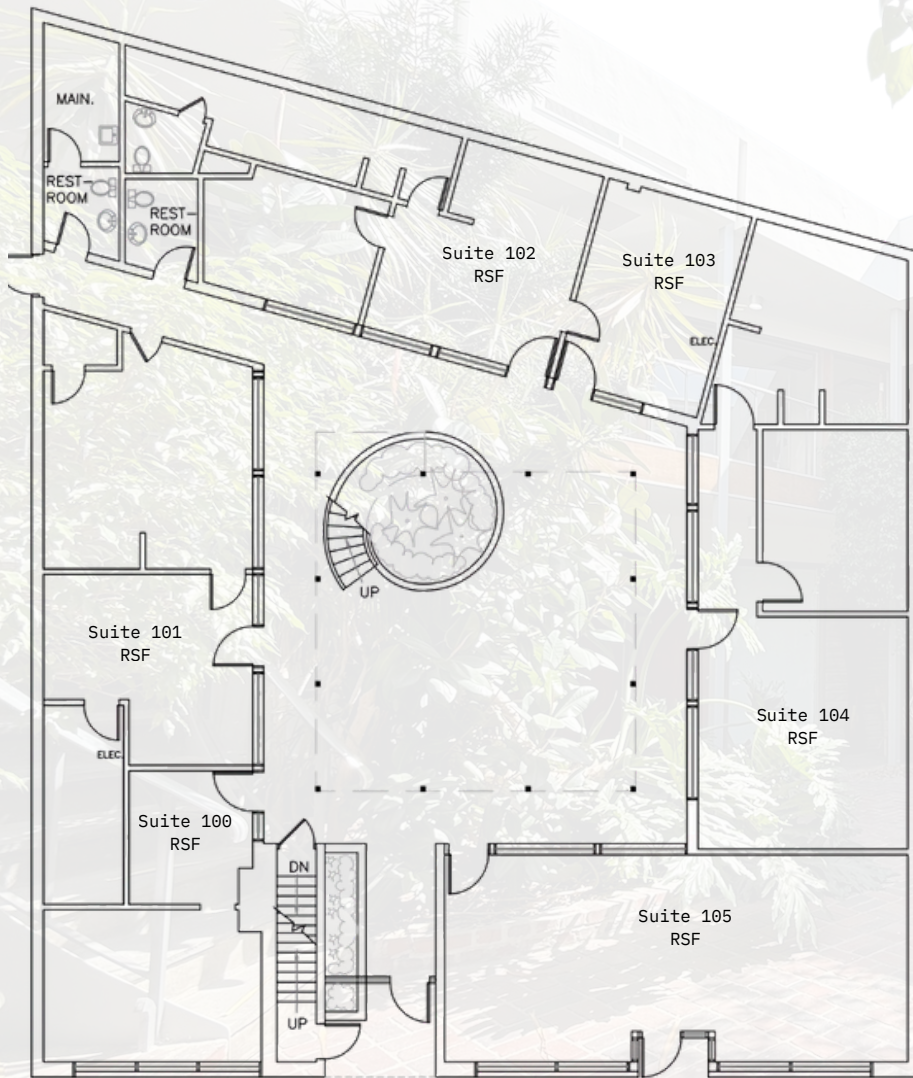
FRANKLIN
PENN REAL ESTATE

LIZA BRESSON
liza@franklinpenn.com
717 676 3811

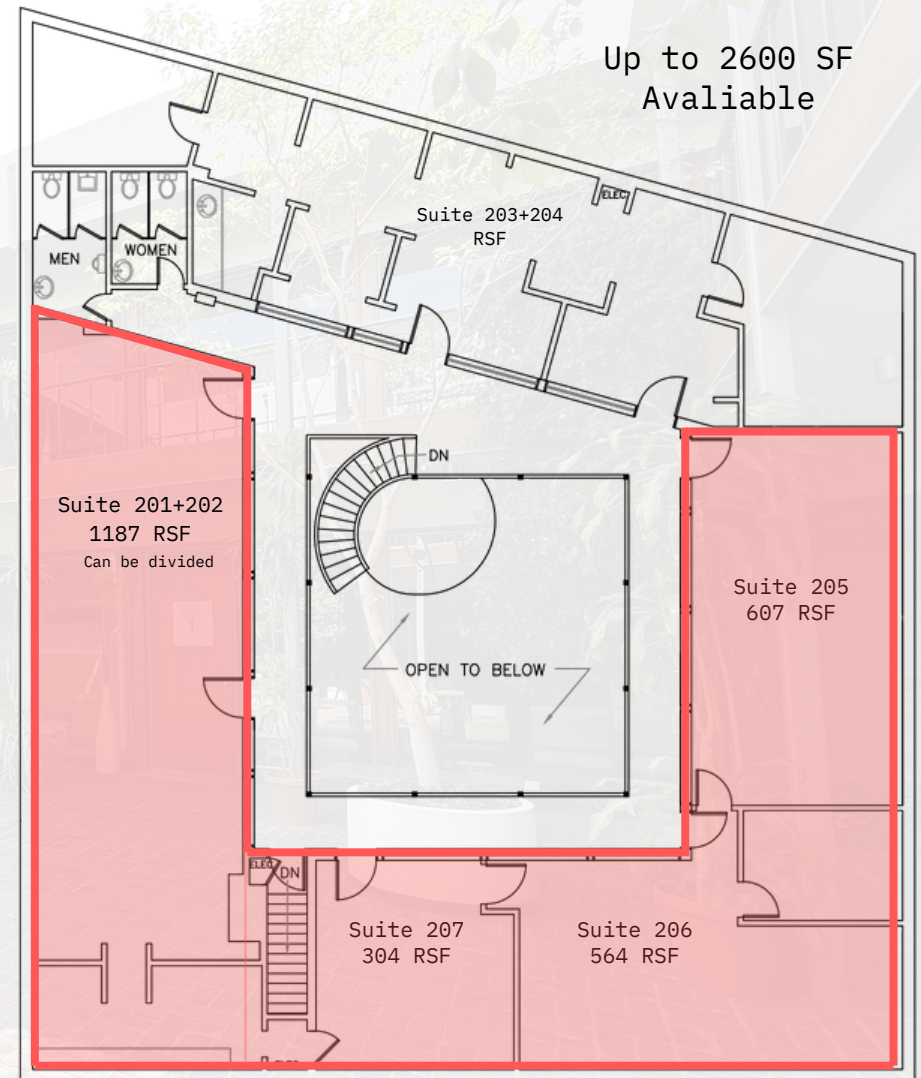
OFFICE PROPERTY FOR LEASE

16 Lancaster Ave, Ardmore, PA, 19003

FLOOR PLANS



First Floor



Up to 2600 SF
Available

Second Floor

OFFICE PROPERTY FOR LEASE

16 Lancaster Ave, Ardmore, PA, 19003

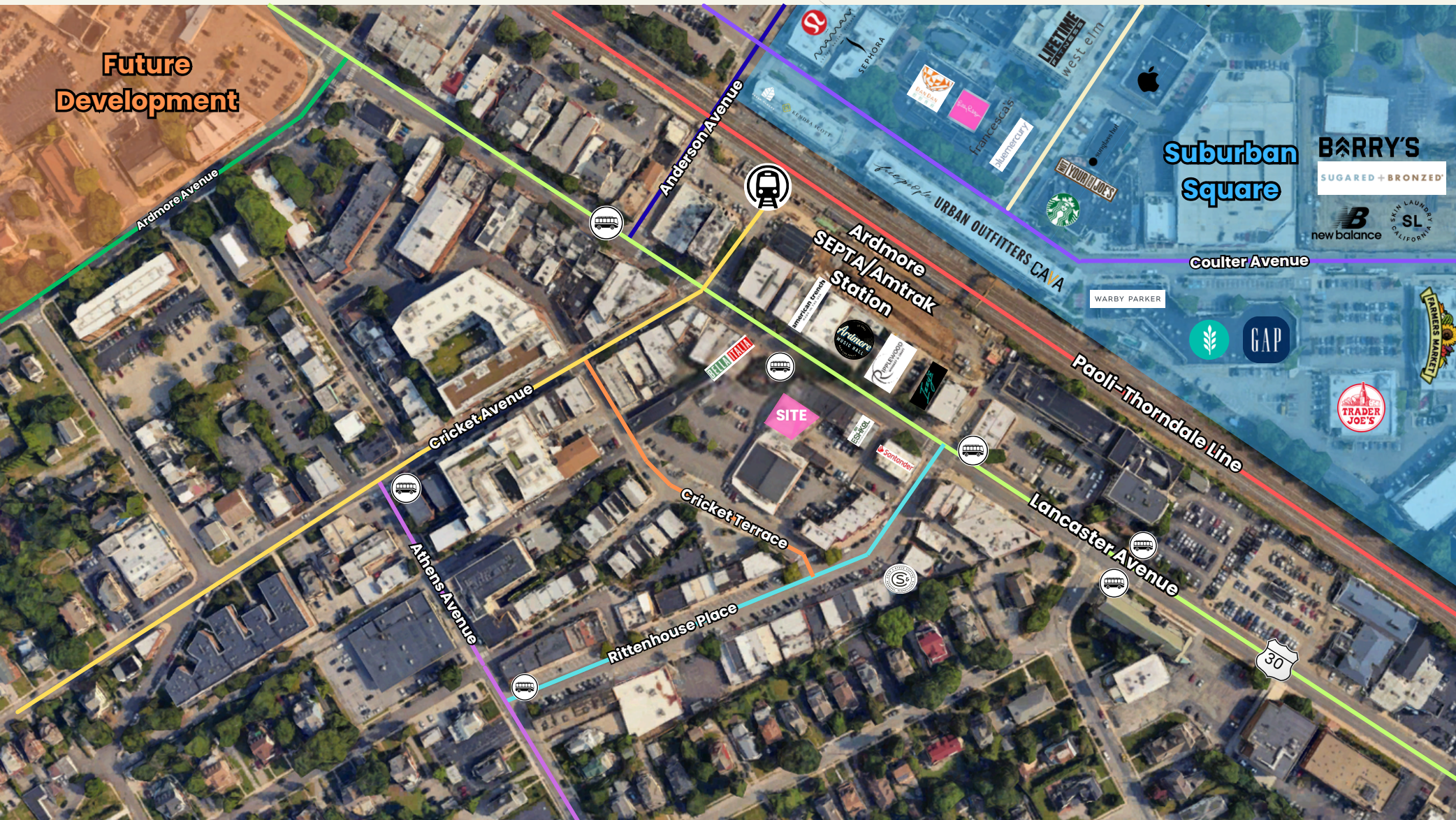
BIRDS EYE AERIAL



OFFICE PROPERTY FOR LEASE

16 Lancaster Ave, Ardmore, PA, 19003

EXPANDED AERIAL VIEW



FRANKLIN
PENN REAL ESTATE

LIZA BRESSON
liza@franklinpenn.com
717 676 3811

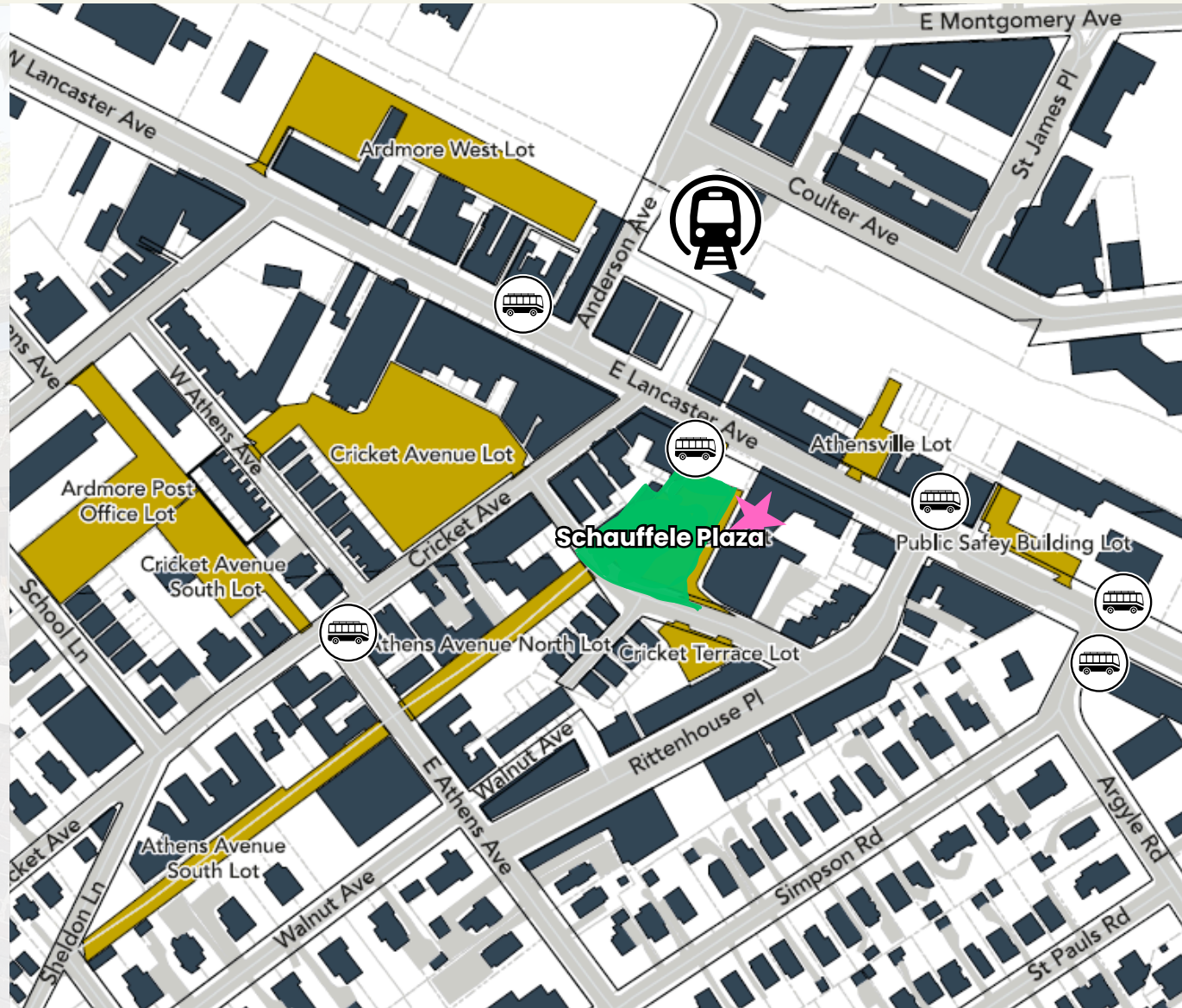
OFFICE PROPERTY FOR LEASE

16 Lancaster Ave, Ardmore, PA, 19003

ARDMORE PARKING AND
TRANSPORTATION MAP



- 619 parking spaces within 5 minute walking radius.
 - 72 parking spaces at Schaufele Plaza
 - 151 parking spaces at Cricket Ave
 - 200 parking spaces at One Ardmore Garage
 - 196 parking spaces at Ardmore Station Parking
- Permit Parking:
 - \$3/day
 - \$12/week
 - \$45/month
 - \$240/6-months
- Ardmore Station (SEPTA & Amtrak)
- Septa bus stop directly outside building.



OFFICE PROPERTY FOR LEASE

16 Lancaster Ave, Ardmore, PA, 19003

7,000 SF BUILDING, OFFICE SUITES

180-1500 SF AVAILABLE



The information contained herein has been obtained through sources deemed reliable by FRANKLIN PENN REAL ESTATE but cannot be guaranteed for accuracy. We recommend that any information which is of special interest, should be obtained through independent verification. All measurements are approximate. Map Data @ 2024 Google | AADT provided by DVRPC



FRANKLIN
PENN REAL ESTATE

LIZA BRESSON
liza@franklinpenn.com
717 676 3811