



# OFFICE BUILDING FOR SALE



## LOCATION

109 A Wholesale Avenue  
Huntsville, AL 35811



## SPACE AVAILABLE

7,000 SF Building +  
0.92 Acre lot



## PRICE

\$795,000

## ABOUT THE PROPERTY

109 A Wholesale Ave is a two-story office building located in an industrial corridor. With close proximity to major access points including I-565 and U.S. Hwy 231, the property offers both visibility and convenience. The building includes a mix of open work areas, private offices, and functional amenities to support a range of business operations.

## PROPERTY HIGHLIGHTS:

- First floor includes five private offices, an open work area, full kitchen, filing room, and a grand foyer entrance
- Second floor features a large conference room, two spacious private offices with a shared kitchenette, and a gym with padded flooring, locker room, and shower
- Multiple exterior entry points and ample on-site parking



**CRUNKLETON**  
COMMERCIAL REAL ESTATE GROUP

## FOR MORE INFORMATION:

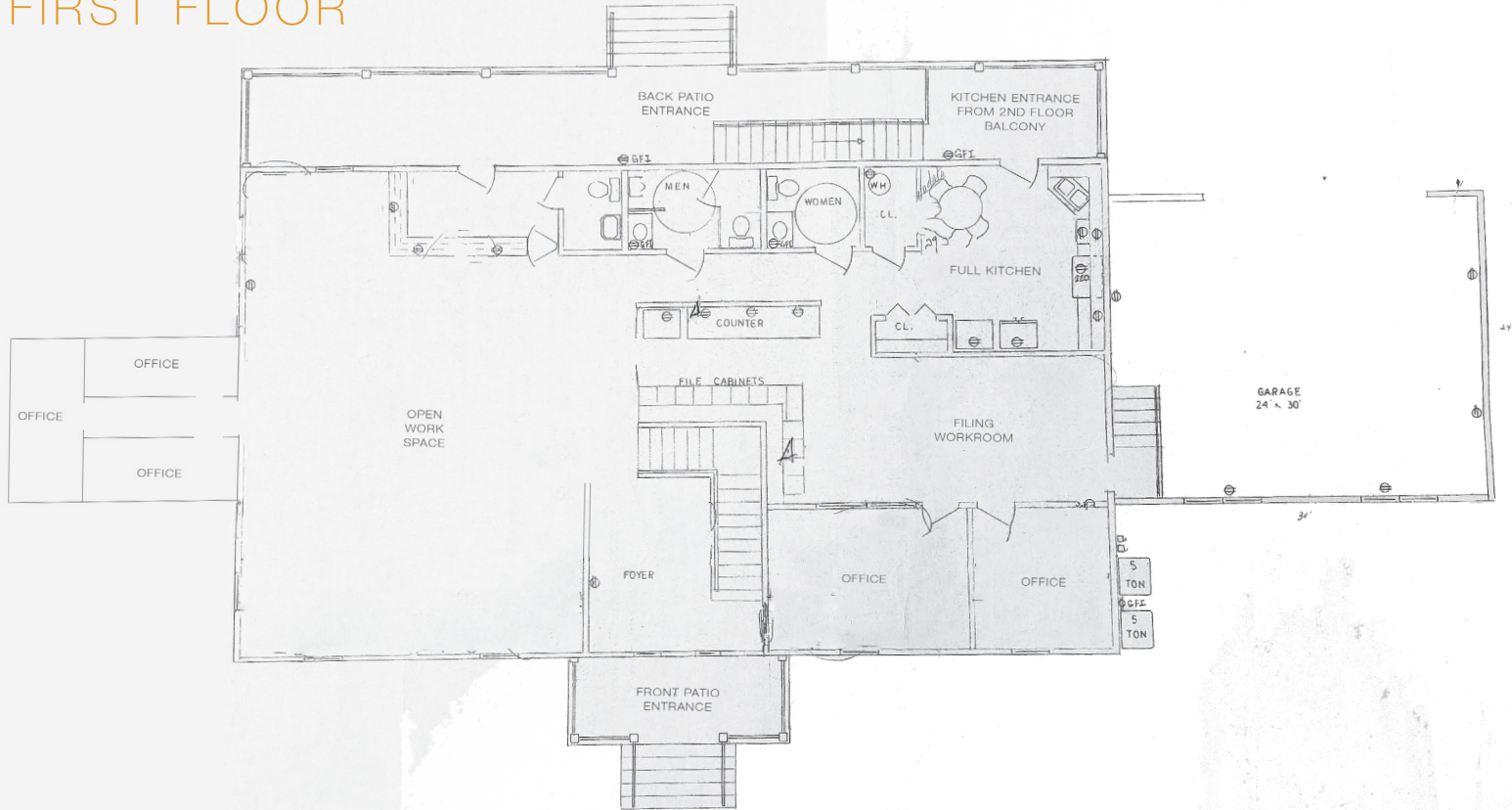
Wesley Crunkleton, CPM | Principal

📞 256-536-8809

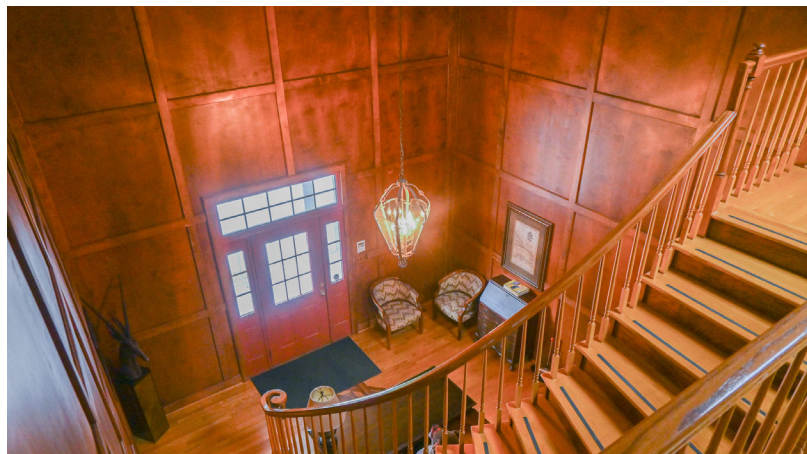
✉️ [Wesley@crunkletonassociates.com](mailto:Wesley@crunkletonassociates.com)

# FLOORPLAN AND PHOTOS

## FIRST FLOOR

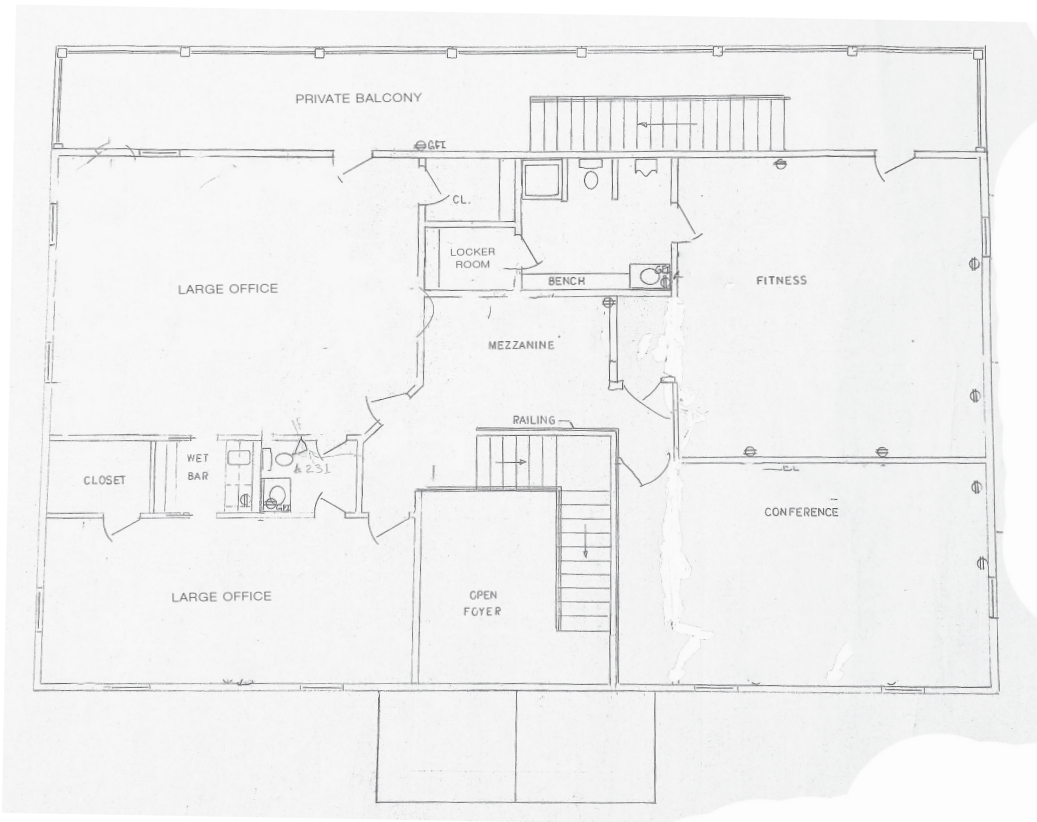


## WHOLESALE AVENUE



# FLOORPLAN AND PHOTOS

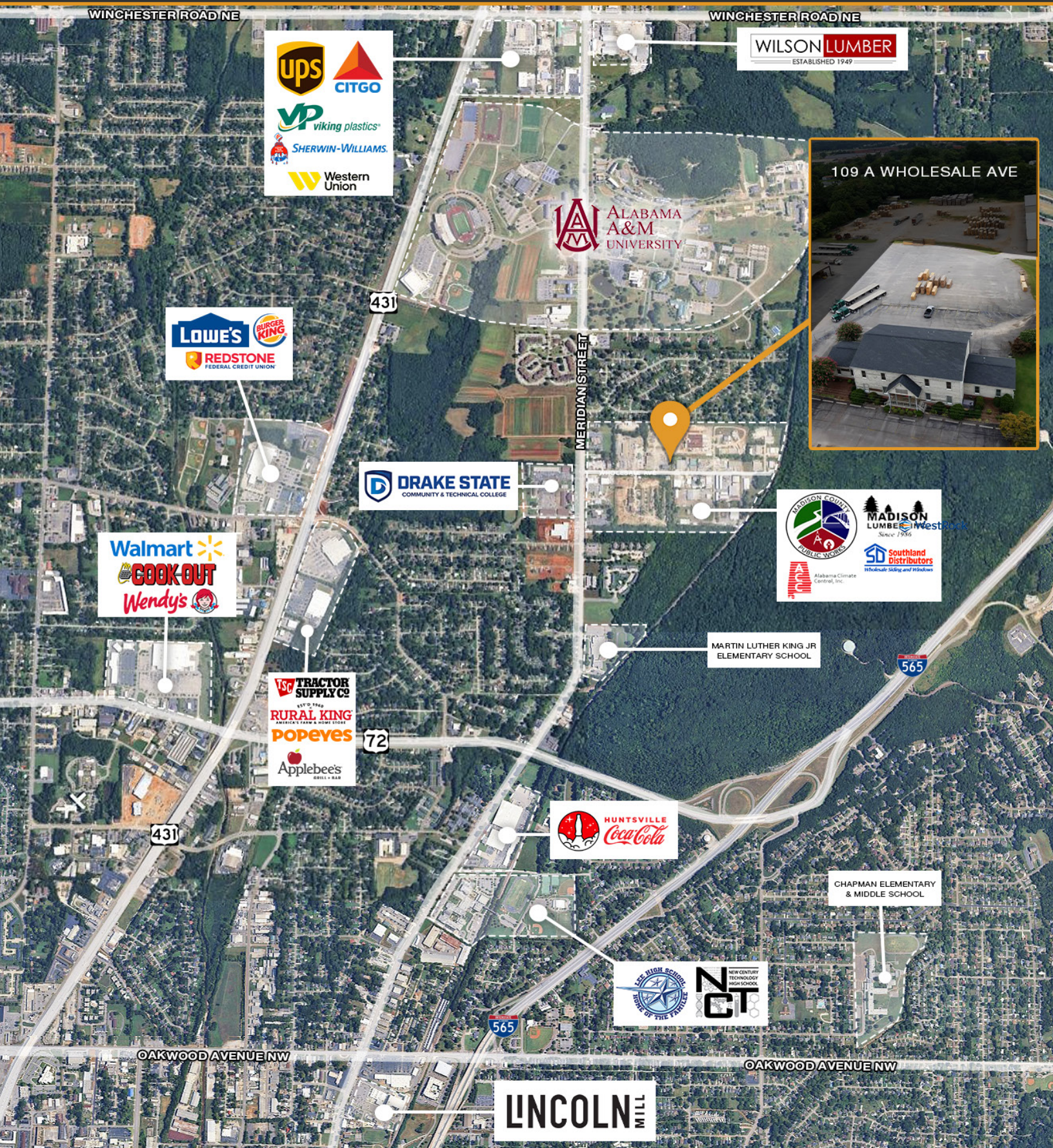
## SECOND FLOOR



### WHOLESALE AVENUE



# AREA MAP



viking plastics®  
 SHERWIN-WILLIAMS.  
 Western Union

**WILSON LUMBER**  
 ESTABLISHED 1949



REDSTONE FEDERAL CREDIT UNION

ALABAMA A&M UNIVERSITY

DRAKE STATE COMMUNITY & TECHNICAL COLLEGE

MADISON LUMBER Since 1986  
 Southland Distributors Wholesale Siding and Windows  
 Alabama Climate Control, Inc.

Walmart  
 COOK-OUT  
 Wendy's

MARTIN LUTHER KING JR ELEMENTARY SCHOOL

TRACTOR SUPPLY CO  
 RURAL KING AMERICA'S FARM & HOME STORE  
 POPEYES  
 Applebee's GRILL & BAR

HUNTSVILLE Coca-Cola

CHAPMAN ELEMENTARY & MIDDLE SCHOOL

NEW CENTURY TECHNOLOGY HIGH SCHOOL  
 NCT

**LINCOLN** MILL

CRUNKLETON COMMERCIAL REAL ESTATE GROUP

FOR MORE INFORMATION:  
 Wesley Crunkleton, CPM | Principal  
 ☎ 256-536-8809 ✉ Wesley@crunkletonassociates.com