

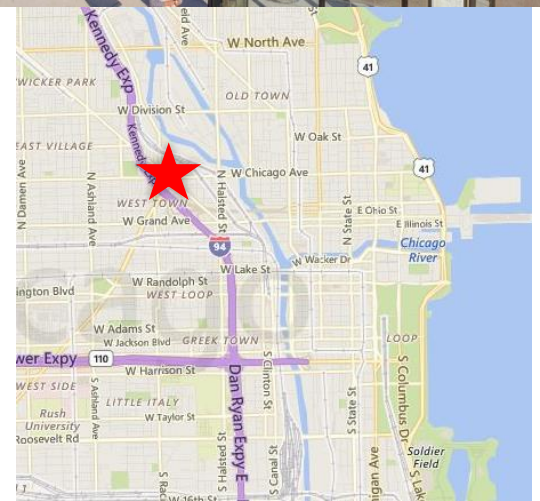
FOR LEASE

MEDICAL OFFICE SPACE

805 N. Milwaukee
Chicago, Illinois 60642
1,424 RSF

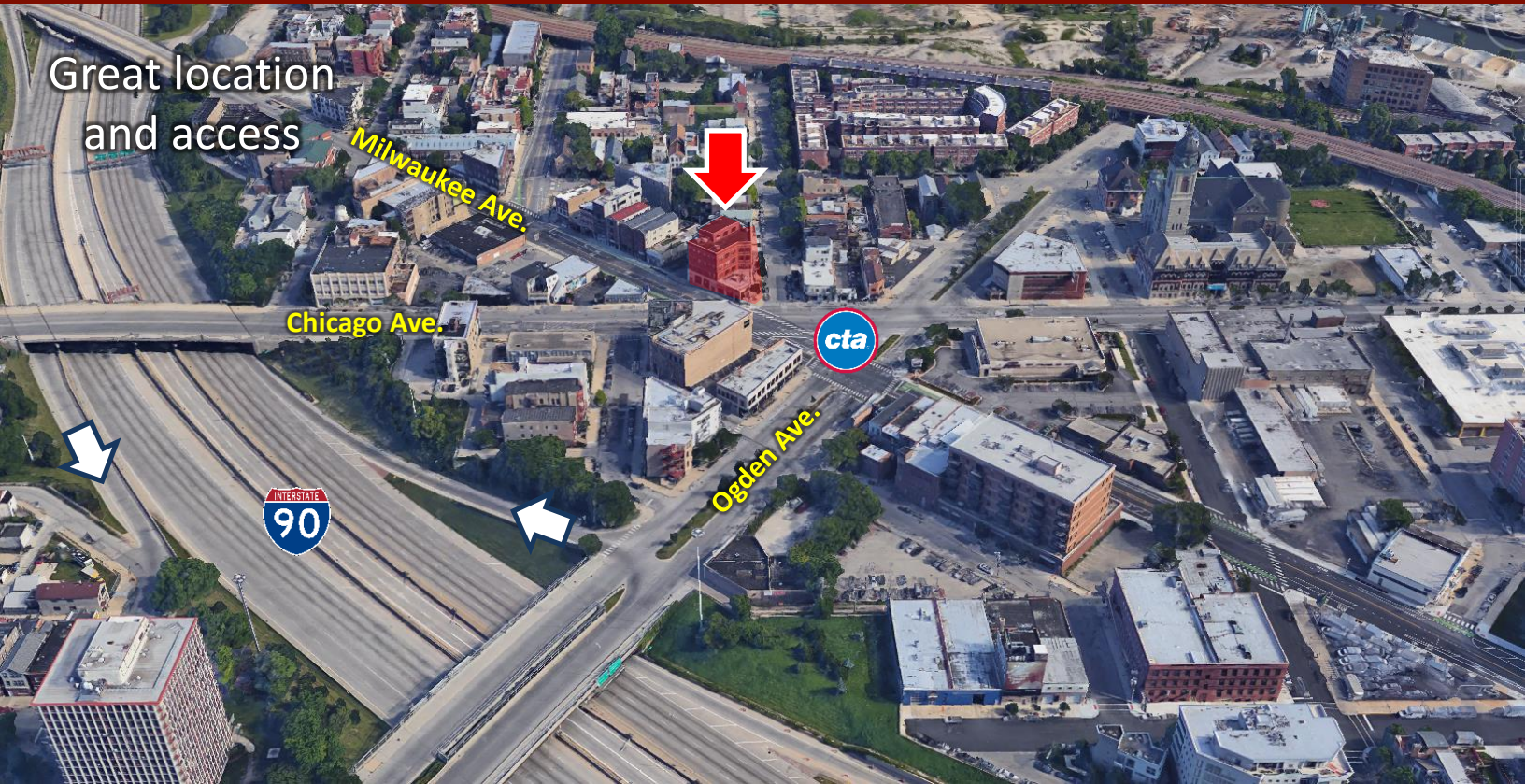


- 1,424 RSF fully built out medical space on Milwaukee Ave. (At intersection of Milwaukee/Chicago/Ogden Ave.)
- 5 treatment rooms with sinks and 2 ADA restrooms
- Great location at Signalized intersection
- Centrally located close to CBD, Wicker Park, West Loop.
- Easy access to I-90
- Adjacent to blue Line subway stop
- Strong area co-tenancy



805 N. Milwaukee Ave., Chicago, Illinois

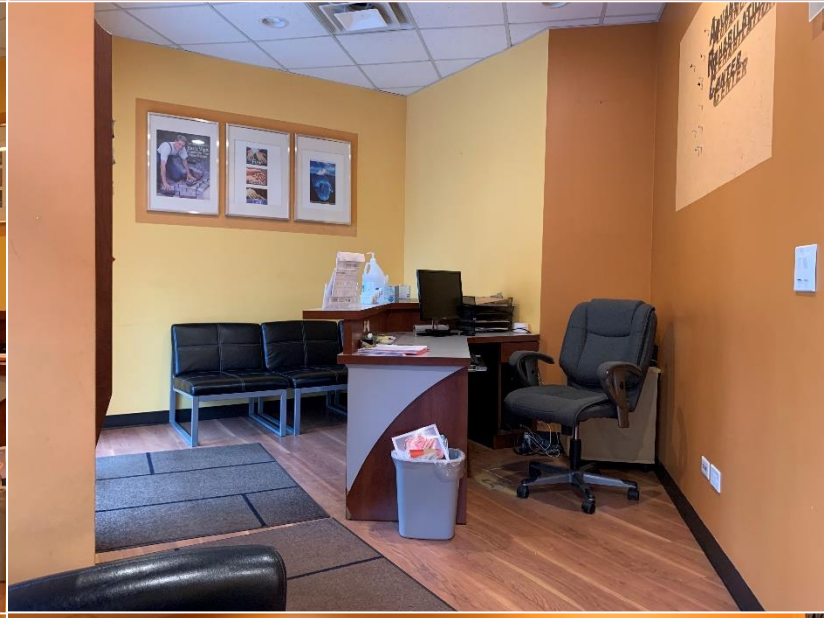
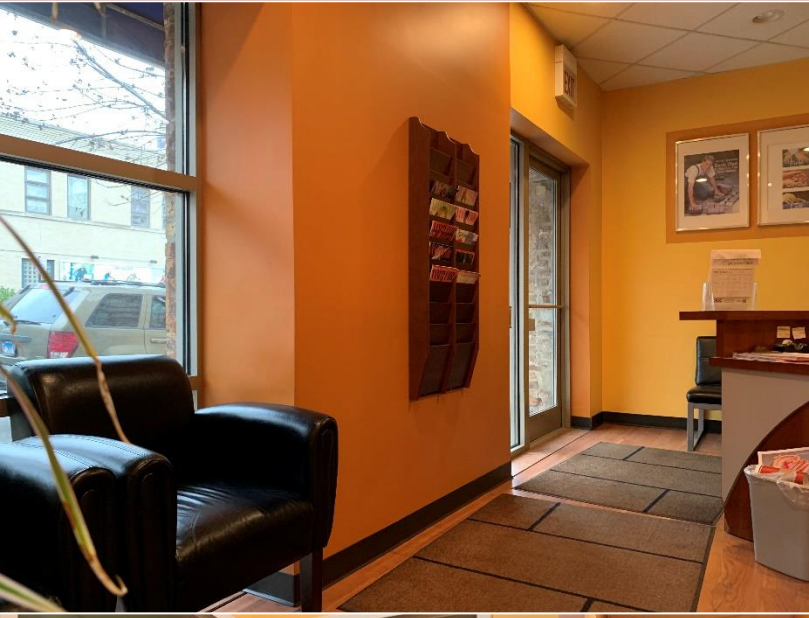
Great location
and access



Bus stop in front and
Blue line subway
adjacent



805 N. Milwaukee Ave., Chicago, Illinois



Joe Padorr 312.316.2300 jpadorr@seneca-re.com

SENECA
REAL ESTATE GROUP

1,424 SF
Medical
Office

