

OFFICE SUITE

Approx 3,705 sf
For Sub-Lease

34 Main St, 3rd Floor
Natick, MA



S P A C E F O R S U B - L E A S E

AVAILABLE (APPROX SF):

3,705 sf

USES:

Office Suite

FOR LEASE:

\$19.25/sf + expenses

NEARBY TENANTS:

Citizens Bank, Ten Trees Books, The Center for the Arts Natick (TCAN), Comella's, Buttercup, H. Brandt Jewelers, and much more!

The information contained herein has been obtained through sources deemed reliable by JMJ Commercial Realty, Inc., but cannot be guaranteed for its accuracy. We recommend to the tenant that any information, which is of special interest, should be obtained through independent verification.

LOCATION:

34 Main St is located in Natick Center, steps to the Commuter Rail and near Rt 9.

SUMMARY: Opportunity to sub-lease 3rd floor office suite in desirable Natick Center. Elevator building featuring a mix of private offices, open collaborative workspace area, kitchenette, and two bathrooms inside the suite. Potential to sub-lease until 3/31/2027, or longer directly with landlord. Excellent location, walking distance to a variety of shops, restaurants, and public transportation. Call for more information!

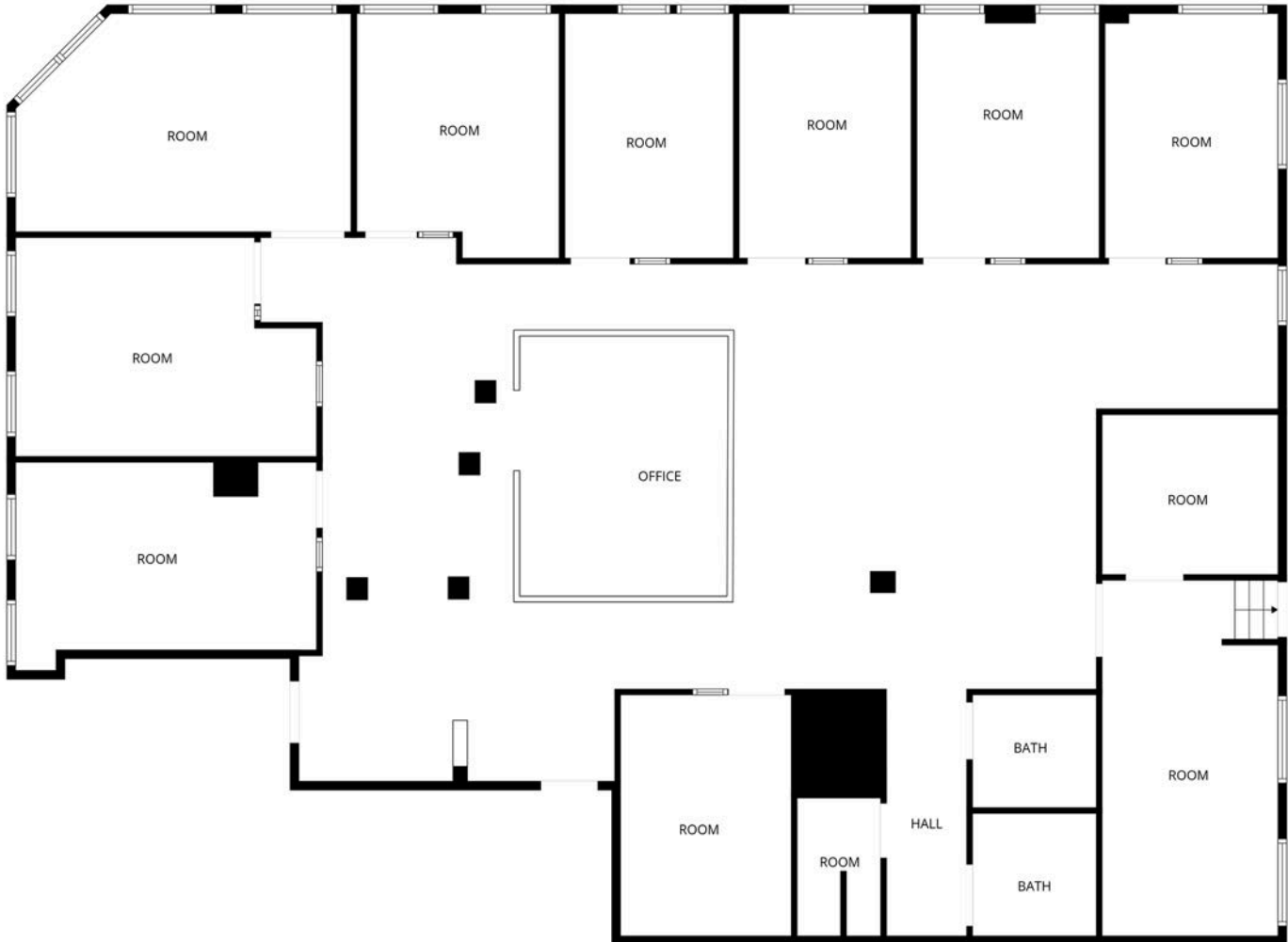


JMJ Commercial Realty
935 Great Plain Avenue #261
Needham, MA 02492
www.jmj-cre.com

Josh Seadia
Principal
617-605-5674
josh@jmj-cre.com

Office Suite for Sub-Lease - 34 Main St, Natick MA 01760

FLOOR PLAN - 3RD FLOOR



FLOOR PLAN CREATED BY CUBICASA APP. MEASUREMENTS DEEMED HIGHLY RELIABLE BUT NOT GUARANTEED.

The information contained herein has been obtained through sources deemed reliable by JMJ Commercial Realty, Inc., but cannot be guaranteed for its accuracy. We recommend to the tenant that any information, which is of special interest, should be obtained through independent verification.



JMJ Commercial Realty
935 Great Plain Avenue #261
Needham, MA 02492
www.jmj-cre.com

Josh Seadia
Principal
617-605-5674
josh@jmj-cre.com