



RETAIL

**1649 DIVISADERO STREET**

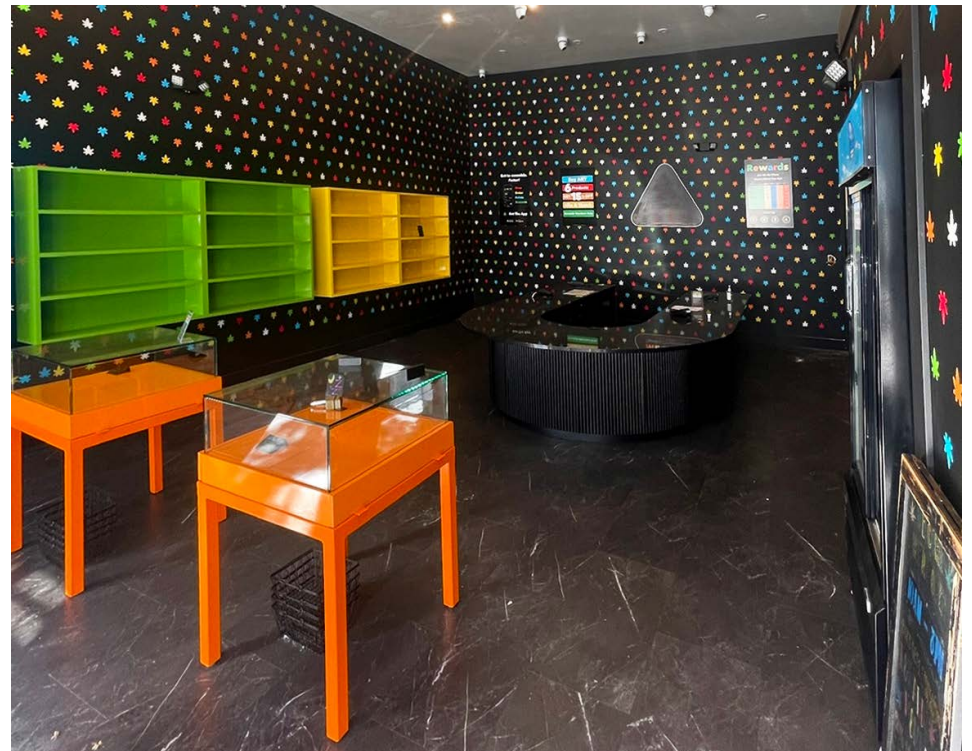
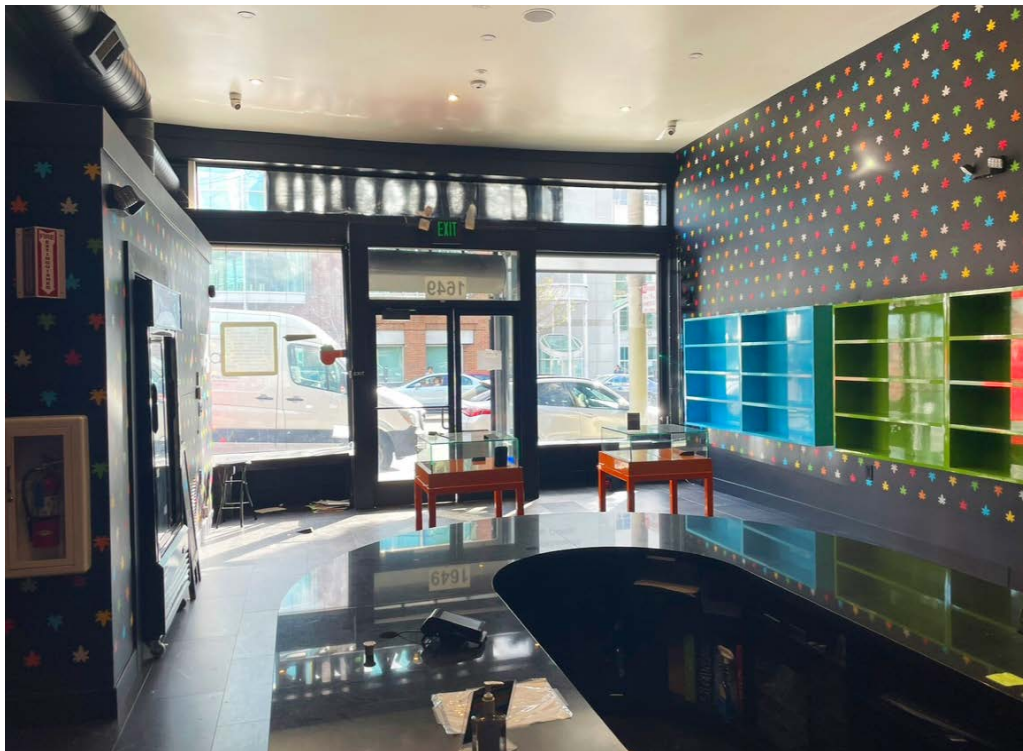
maven  
RETAIL



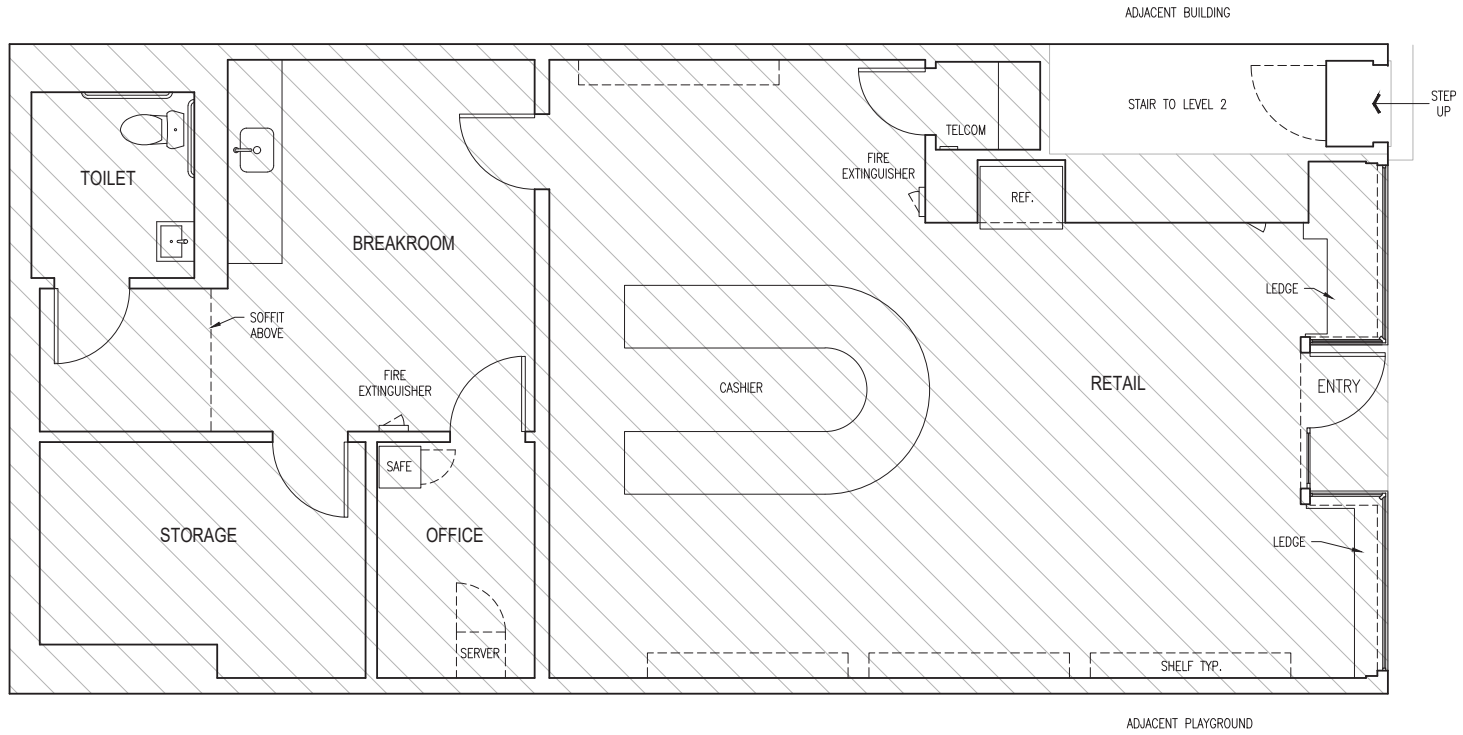
- **+/- 1,366 SF**
- **Located on a busy San Francisco retail corridor**
- **Surrounded by Kaiser & UCSF Medical campuses**
- **Various security features**
- **High ceilings**
- **Large displays**
- **Excellent visibility**
- **Easy access to public transportation**

#### **FEATURES**

Ground floor retail space on a great block of San Francisco's vibrant Divisadero Street. Located at the intersection of the Kaiser and UCSF medical campuses, this space features high display windows, security features, high ceilings, and many recent upgrades. Prior use was a dispensary, but landlord open to a variety of uses. Attractive rent schedule and supportive landlord. Easy access to public transportation, and in close proximity to many neighborhood businesses such as B Patisserie, Core 40, San Francisco Athletic Club, and more.






FLOOR PLAN



**LOWER PACIFIC HEIGHTS**

**1649 Divisadero**

**WALK/BIKE/TRANSIT SCORE**

 <b>97</b>	 <b>82</b>	 <b>74</b>
WALK SCORE	BIKE SCORE	TRANSIT SCORE

**BUS LINES: 1, 2, 24, 38**





STARBUCKS



B PATISSERIE



MY FATHER'S KITCHEN



MAISON CORBEAUX



SWEET MAPLE



UCSF



KAISER PERMANENTE



ROUTIER



ANOMALY

LOWER PACIFIC HEIGHTS

1649 Divisadero is located in the Lower Pacific Heights neighborhood.

1649 Divisadero is located in the Lower Pacific Heights neighborhood. Dining, entertainment, and shopping options in Lower Pacific Heights mirror its diverse surroundings. Japantown is a major draw to the neighborhood, with Fillmore and Divisadero streets serve up numerous shopping, eating, and drinking opportunities. It is filled with delicious restaurants from high-end to casual, as well as lively karaoke bars and the Kabuki Theater. Musical and cultural history flow through next door neighborhood Fillmore Street.



## Contact

**HALEY KLEIN**

Office 415.404.7330

[haley@mavenproperties.com](mailto:haley@mavenproperties.com)

DRE #1907308

NOTICE: This information has been secured from sources we believe to be reliable but we make no representations, warranties, express or implied, as to the accuracy of the information. Listing broker has been given enough information to provide only a preliminary interest in the property. The materials are not to be considered fact. The information contained herein is not a substitute for thorough due diligence investigation. References to square footage, zoning, use, or age are approximate. Please contact the San Francisco Planning Department to verify zoning at (415) 558-6378, as neither broker or landlord represent that this space is suitable for your use. Tenant or Buyer must verify the information at their own expense and bears all the risk for any inaccuracies. By receiving these materials you are agreeing to the disclaimers set forth herein. DRE#01878802

---

466 Green Street Suite #203  
San Francisco, CA 94133  
415-781-770  
[www.mavenproperties.com](http://www.mavenproperties.com)