

MOUNTAIN HOME YARD SPACE

YARD SPACE FOR LEASE | 685 AIRBASE ROAD | MOUNTAIN HOME, ID 83647



1 MONTH OF FREE RENT FOR EVERY YEAR LEASE SIGNED!

CONTACT

SEAN EDWARDS
208.412.7763
sean@tokcommercial.com

GRAYSON STONE, SIOR, CCIM
208.948.0808
grayson@tokcommercial.com

HIGHLIGHTS

- Graveled lay-down yard ideal for contractor yards, fleet parking, RV/trailer storage, landscape companies, material laydown, and service vehicles.
- Affordable lease rate with immediate availability.
- Prime Airbase Road location just 3 miles from I-84, Exit 95.
- Flexible terms!

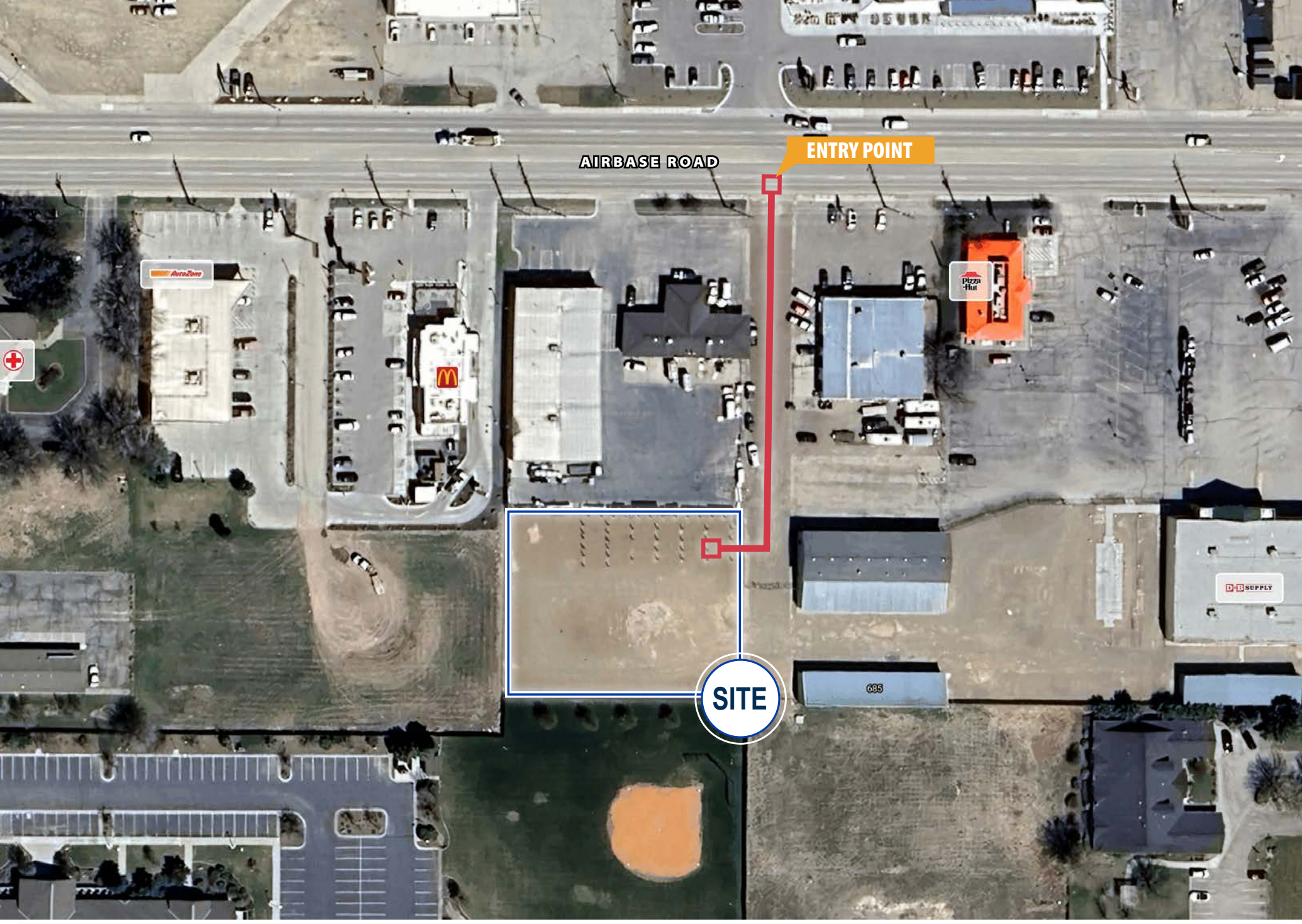
DETAILS

PROPERTY TYPE	Land/Yard Space
PROPERTY SIZE	0.68 Acres
AVAILABLE SIZE	0.43 Acres
LEASE RATE	\$0.06/SF
LEASE TYPE	Mod. Gross
ZONING	C4



UPDATED: 5.14.2026

THIS PROPERTY IS EXCLUSIVELY MARKETED BY TOK INLAND NORTHWEST LLC DBA TOK COMMERCIAL
This information was obtained from sources believed reliable but cannot be guaranteed. Any opinions or estimates are used for example only.



UPDATED: 5.14.2026

THIS PROPERTY IS EXCLUSIVELY MARKETED BY TOK INLAND NORTHWEST LLC DBA TOK COMMERCIAL
This information was obtained from sources believed reliable but cannot be guaranteed. Any opinions or estimates are used for example only.



UPDATED: 5.14.2026

THIS PROPERTY IS EXCLUSIVELY MARKETED BY TOK INLAND NORTHWEST LLC DBA TOK COMMERCIAL

This information was obtained from sources believed reliable but cannot be guaranteed. Any opinions or estimates are used for example only.

AERIAL MAP



UPDATED: 5.14.2026

THIS PROPERTY IS EXCLUSIVELY MARKETED BY TOK INLAND NORTHWEST LLC DBA TOK COMMERCIAL

This information was obtained from sources believed reliable but cannot be guaranteed. Any opinions or estimates are used for example only.

AERIAL MAP



UPDATED: 5.14.2026

THIS PROPERTY IS EXCLUSIVELY MARKETED BY TOK INLAND NORTHWEST LLC DBA TOK COMMERCIAL

This information was obtained from sources believed reliable but cannot be guaranteed. Any opinions or estimates are used for example only.