

FOR LEASE

SECOND FLOOR OFFICE

 7 N. Claiborne Street | Mobile, AL



Leigh Rendfrey

601.941.1533 | leigh@cre-mobile.com



**CRE
MOBILE**
CRE-MOBILE.COM

FOR LEASE

SECOND FLOOR OFFICE

 7 N. Claiborne Street | Mobile, AL



AVAILABLE SPACE

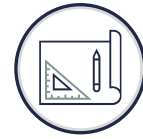
Available: Second Floor: 2,361± SF

Total Property Size: 6,243± SF



HISTORIC BUILDING

Historic Home Meets 21st Century Efficiency.
Beautifully Renovated Office Building with Well-Maintained & Preserved Original Features



LAYOUT

See Floor Plan on Page #5



PARKING

Private Driveway with Two Covered Spots, as Well as On-Street Parking, and Paid Parking Across the Street at a Rate of \$55/Spot/Month



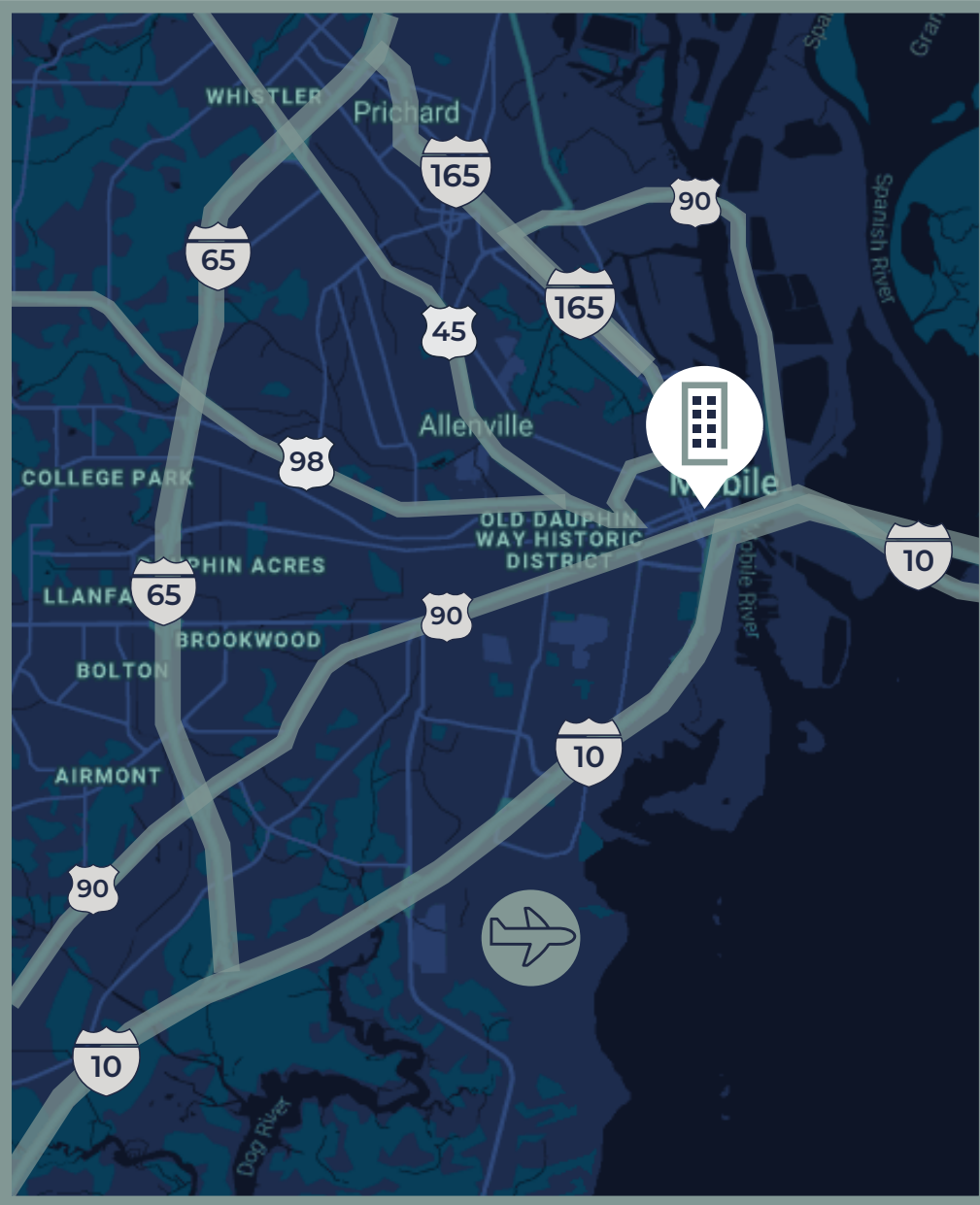
PRIME LOCATION

Located 1/2 a Block from Dauphin St. in the Lower Dauphin Street Historic District & Included in the Business Improvement & Entertainment Districts



LEASE RATE

\$3,600.00/Month Full Service



LOCATION ADVANTAGES



Conveniently Located

Located in the heart of downtown Mobile on N. Claiborne St. in between St. Francis St. & Dauphin St. with easy access to I-10, I-165 & Government Blvd.



Walkable Location

Extremely walkable location that is proximate to Federal Buildings, restaurants, shops, office buildings and more!



About CRE Mobile

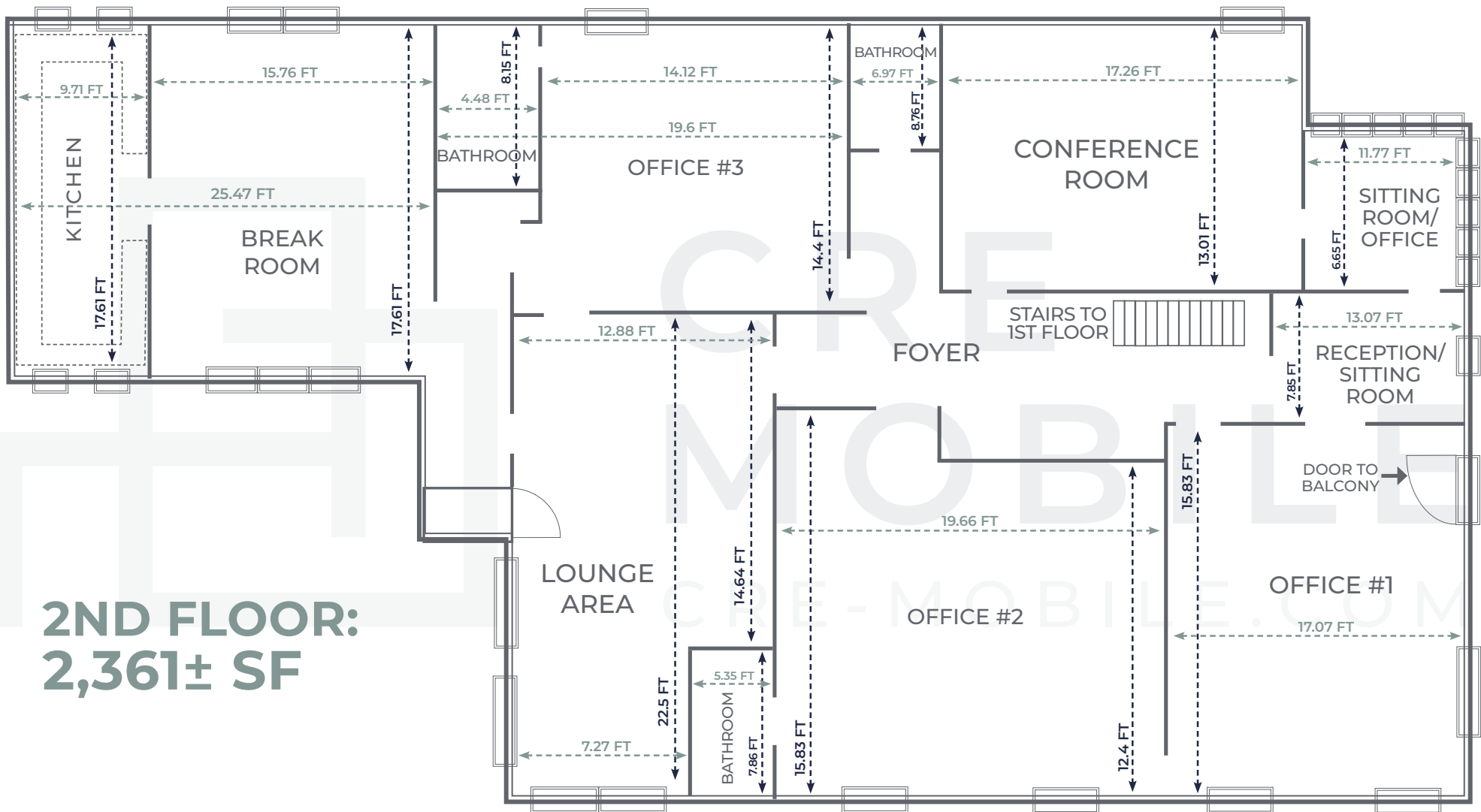
CRE Mobile is a team of seasoned professionals with over 170 years of experience in all facets of real estate with a unique presence as a full-service commercial real estate firm in southwest Alabama. We align our goals with yours because we recognize the future of your asset depends upon our performance to deliver results to you. Success comes from being on the same page—from the big picture down to the small details. We are here to help you — find your space —



NO WARRANTY OR REPRESENTATION, EXPRESS OR IMPLIED, IS MADE AS TO THE ACCURACY OF THE INFORMATION CONTAINED HEREIN, AND THE SAME IS SUBMITTED SUBJECT TO ERRORS, OMISSIONS, CHANGE OF PRICE, RENTAL OR OTHER CONDITIONS, PRIOR SALE, LEASE OR FINANCING, OR WITHDRAWAL WITHOUT NOTICE, AND OF ANY SPECIAL LISTING CONDITIONS IMPOSED BY OUR PRINCIPALS. NO WARRANTIES OR REPRESENTATIONS ARE MADE AS TO THE CONDITION OF THE PROPERTY NOR ANY HAZARDS CONTAINED THEREIN ARE ANY TO BE IMPLIED.



SECOND FLOOR 7 N. Claiborne Street | Mobile, AL



**2ND FLOOR:
2,361± SF**