

2,000-6,361 SF OFFICE SPACE FOR LEASE

105 SE 22ND ST

SUITE 11

SUITE 7



**COREY FUHRMAN**  
BROKER  
479.504.2034  
COREY@BENNETTCRE.COM

5512 WEST WALSH LN, #201, ROGERS, AR 72758 | 479.278.4040 | BENNETTCRE.COM

# SITE SUMMARY

OFFICE SPACE FOR LEASE



## OVERVIEW

# \$17.50 PSF

ASKING RENT

# 2,000-6,361 SF

AVAILABLE

# MODIFIED GROSS

LEASE TYPE

**ADDRESS** 105 SE 22ND ST

**CITY, STATE** BENTONVILLE, AR

**SUITE 7** 2,285 SF

**SUITE 11** 4,067 SF - CAN BE DEMISED TO 2,000 SF

**RENT** \$17.50 PSF

**LEASE TYPE** MODIFIED GROSS

## HIGHLIGHTS

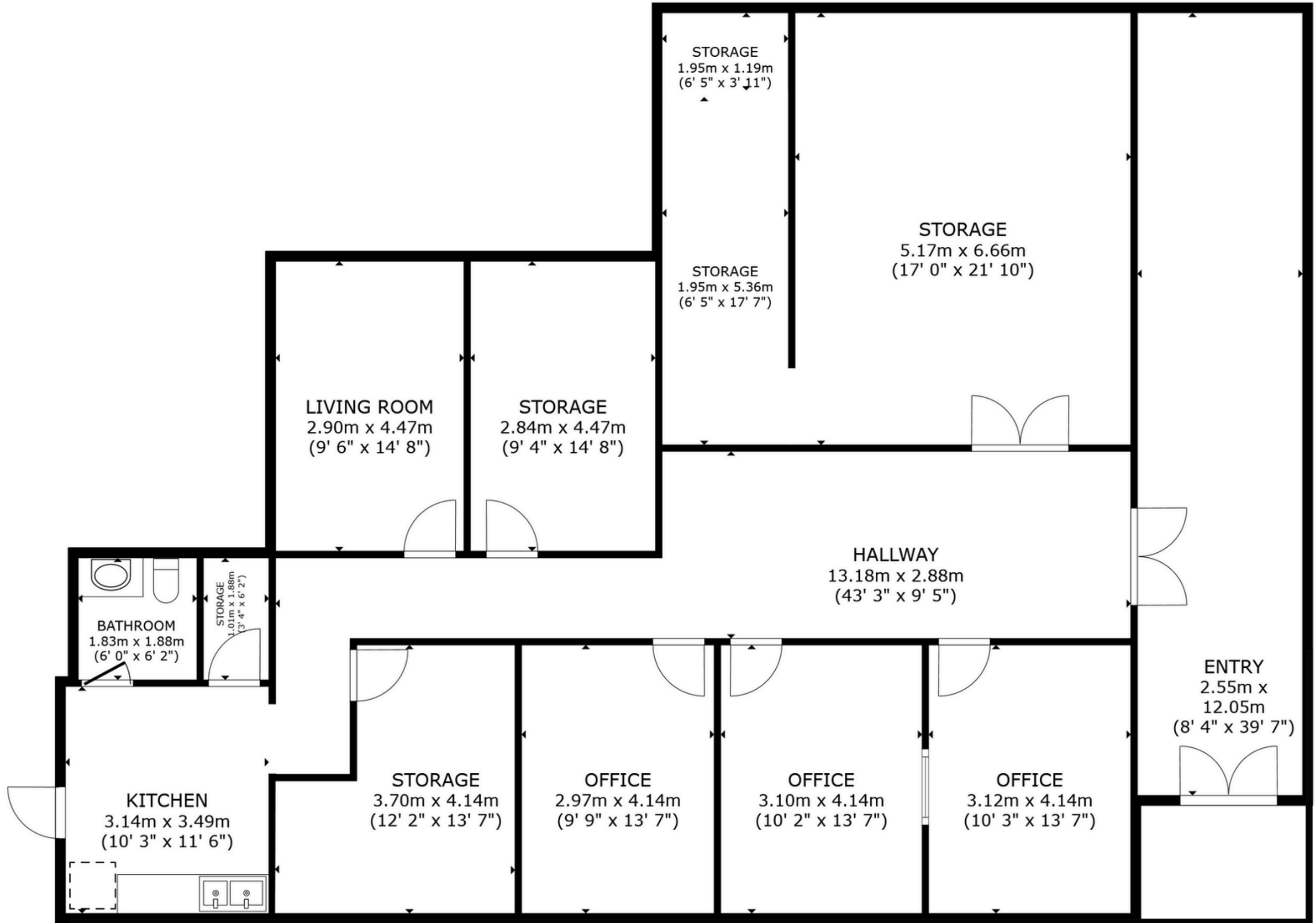
- + LESS THAN A 3-MINUTE DRIVE TO THE NEW WALMART HOME OFFICE AND SAM'S CLUB HOME OFFICE
- + NEAR SEVERAL NEW PROJECTS SUCH AS CLIMB BENTONVILLE, BENTONVILLE BREWERY AND OSAGE PARK AT THADEN FIELD
- + NEW J STREET & 22ND STREET TRAFFIC LIGHT

**SUITE 7 360° VIRTUAL TOUR**

**SUITE 11 360° VIRTUAL TOUR**



**SUITE 7 FLOOR PLAN**  
OFFICE SPACE FOR LEASE



# SUITE 7 INTERIOR PHOTOS

OFFICE SPACE FOR LEASE

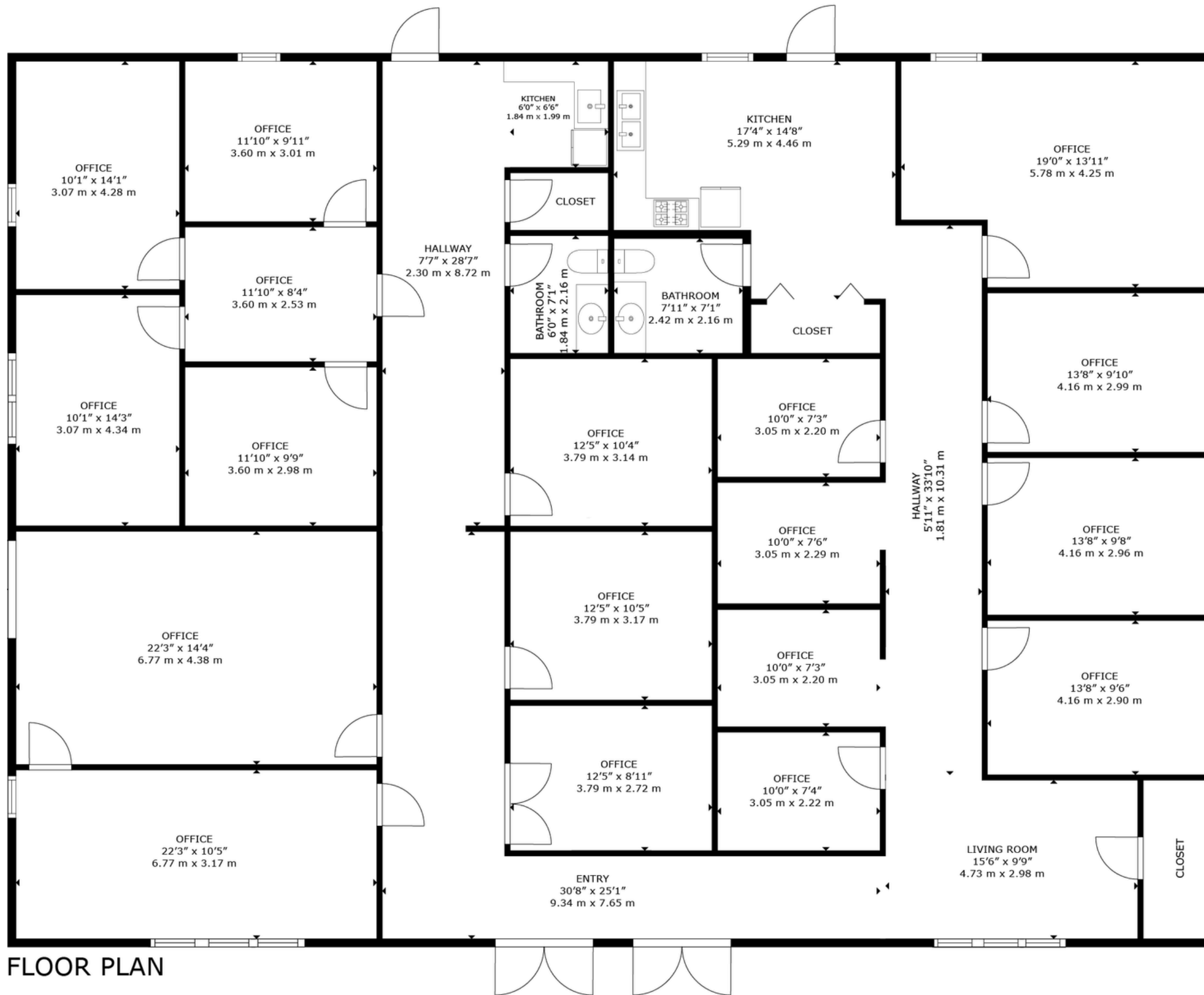


105 SE 22ND ST // BENTONVILLE, AR

BENNETTCRE.COM

# SUITE 11 FLOOR PLAN

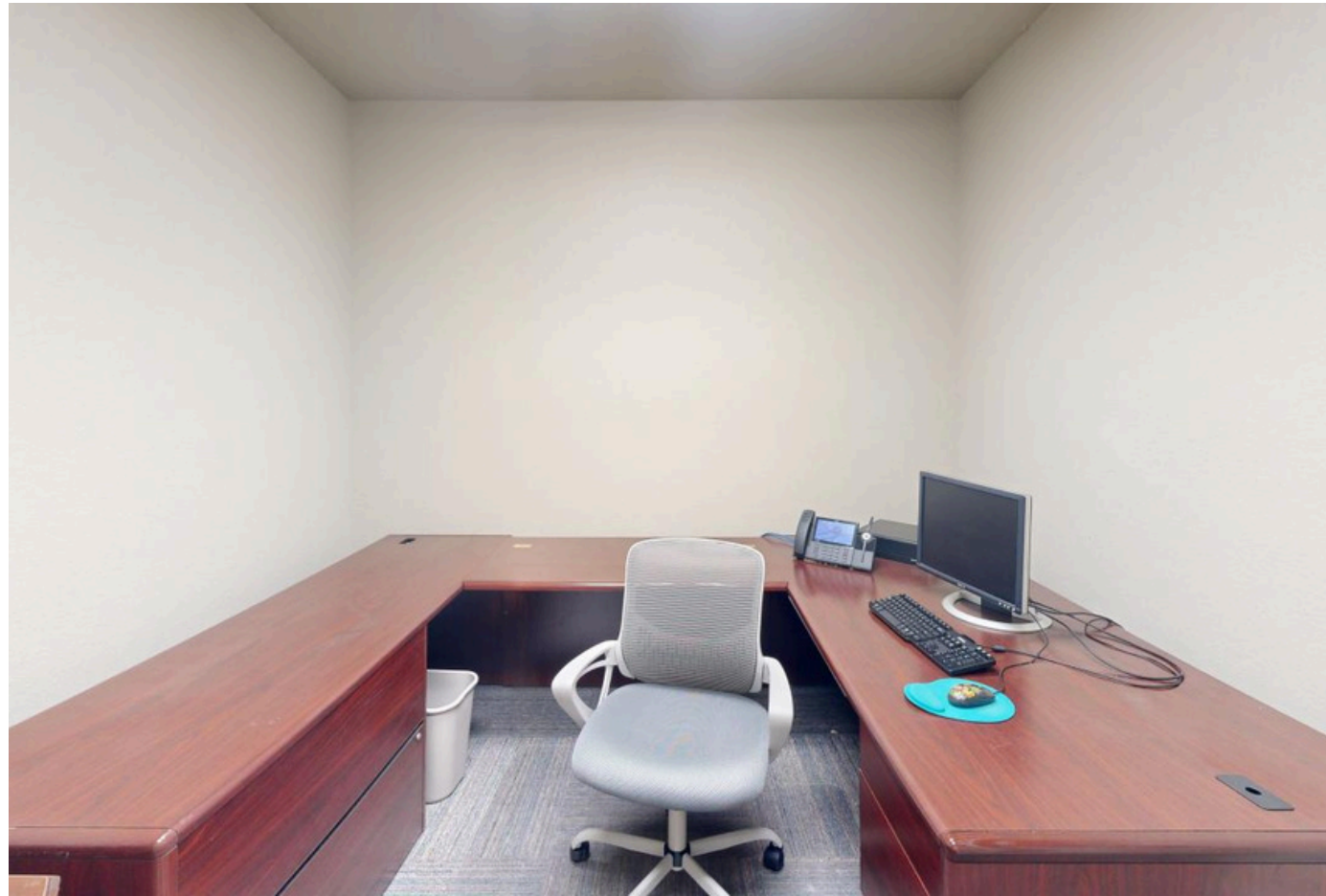
OFFICE SPACE FOR LEASE



FLOOR PLAN

# SUITE 11 INTERIOR PHOTOS

OFFICE SPACE FOR LEASE

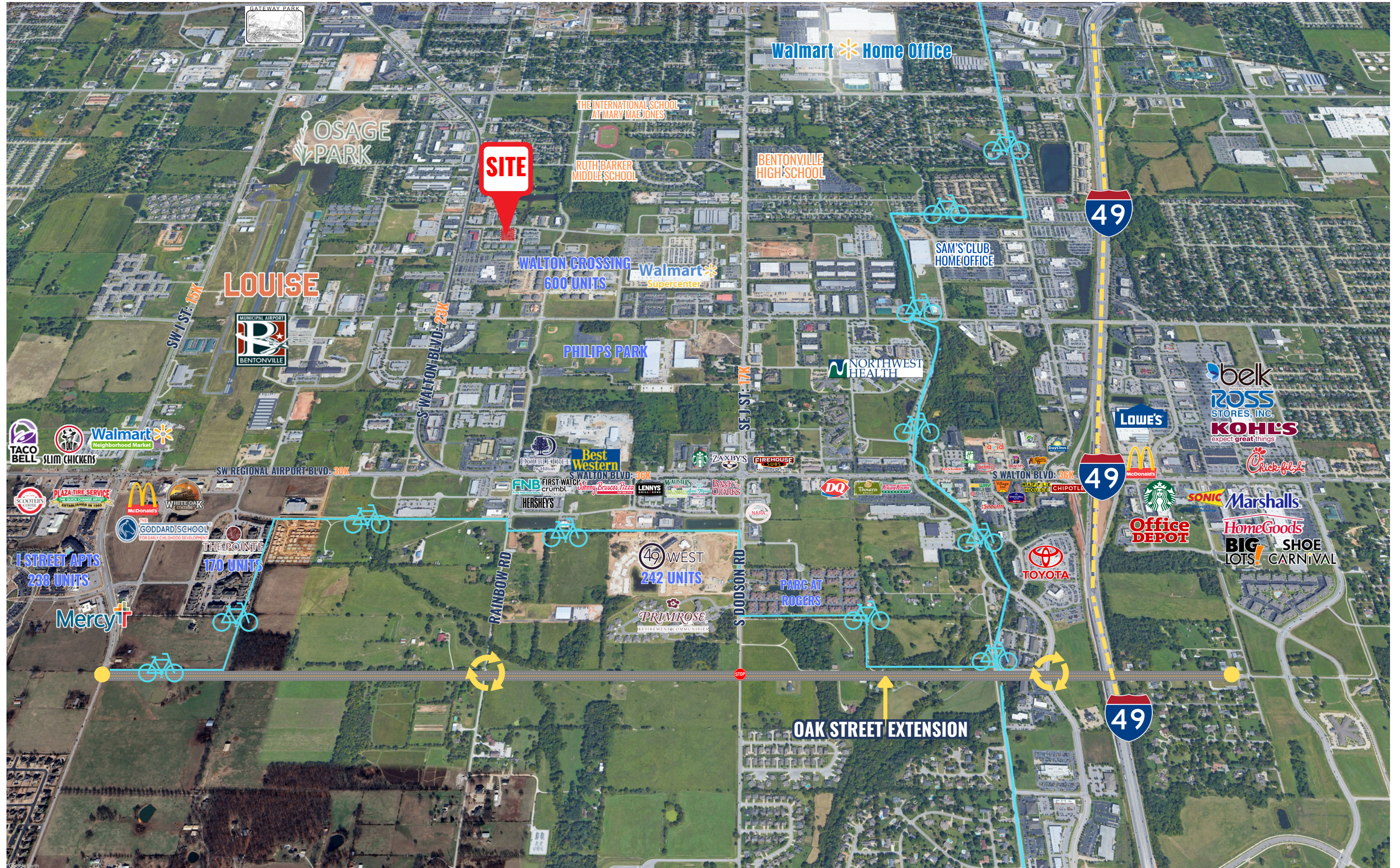


105 SE 22ND ST // BENTONVILLE, AR

[BENNETTCRE.COM](http://BENNETTCRE.COM)

# AERIAL VIEW

OFFICE SPACE FOR LEASE



105 SE 22ND ST // BENTONVILLE, AR

BENNETTCRE.COM