

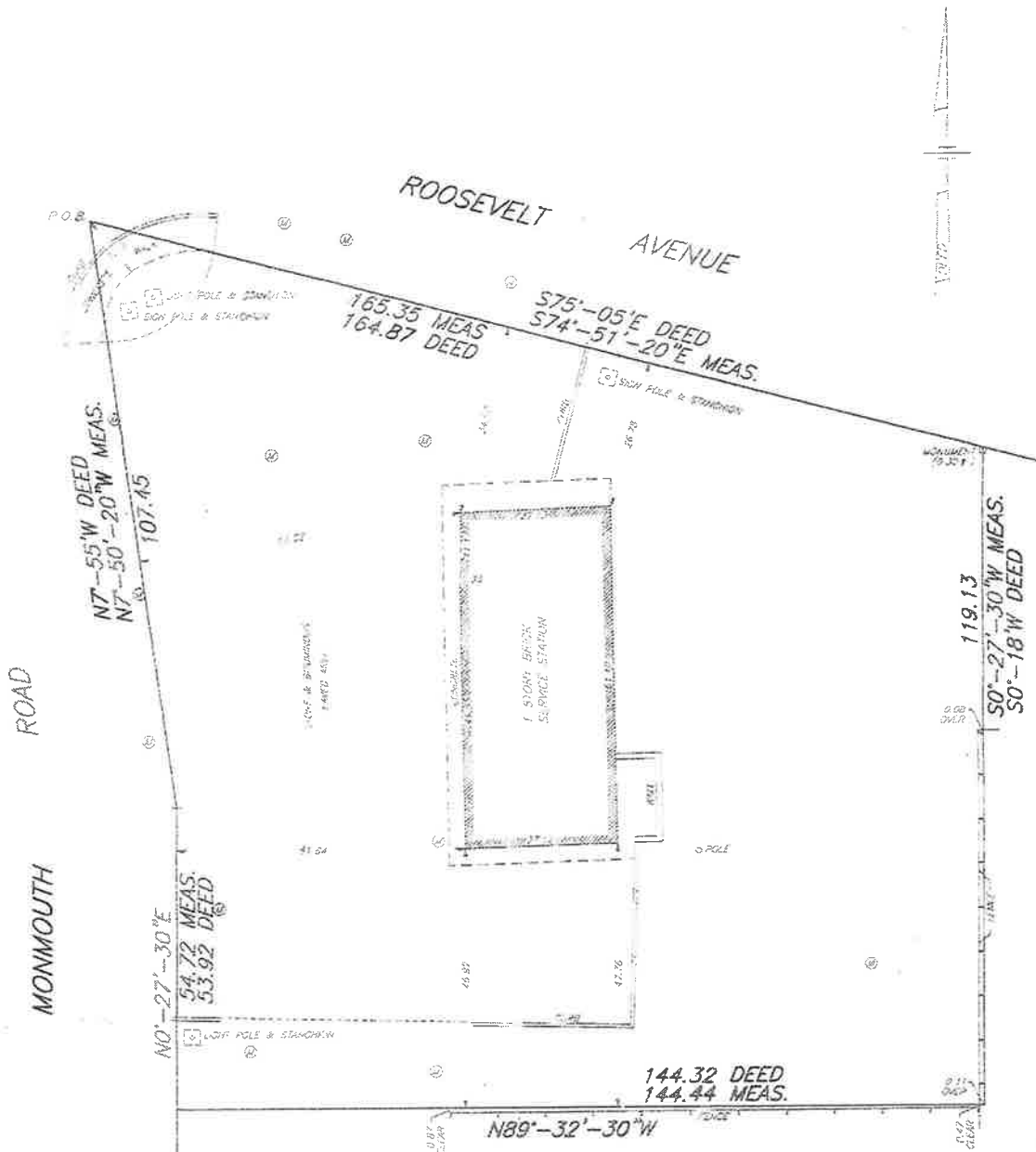
TOWNSHIP OF OCEAN, MONMOUTH COUNTY, N.J.

LOCATION SURVEY OF BUILDING ON PROPERTY SITUATED IN THE TOWNSHIP OF OCEAN, MONMOUTH COUNTY, NEW JERSEY

CERTIFIED TO BE AN ACCURATE REPRESENTATION OF PREMISES SURVEYED TO ACHPSE, LLC; TWO RIVER COMMUNITY BANK, ITS SUCCESSORS AND/OR ASSIGNS, AS THEIR INTERESTS MAY APPEAR; CHICAGO TITLE INSURANCE COMPANY; RED BANK TITLE AGENCY, INC.; JASON S. KLEIN, ESQ.; ANSELL GRIMM & AARON, P.C.

SCALE 1" = 20 FEET

Log Bleyker #33522
GLUCKLER & DEN BLEYKER
PROFESSIONAL LAND SURVEYORS
HACKENSACK, N.J.
14 JANUARY 2014



A WRITTEN ORDER AND DIRECTION NOT TO SET CORNER MARKERS HAS BEEN OBTAINED FROM THE ULTIMATE OWNER PURSUANT TO P. 2008-14 (2008-10-3) AND N.J.A.C. 17:27-3.1(f)

LEGEND
⊙ - MONITORING WELL