

OFFICE/WAREHOUSE BUILDING

FOR SALE | LITTLE ROCK, AR

Commercial
Realty LLC

LOCATION

- #1 Remington Drive behind Tractor Supply

SIZE

- 15,284 Sq. Ft. Total
- 9,859 Sq. Ft. heated warehouse
- 5,341 Sq. Ft. Office Area
- 84 Sq. Ft. Demarcation Room
- Potential for 3 different suites

SALES PRICE

- \$3,450,000.00

HIGHLIGHTS

- Three (3) 10 x 10 roll up doors with access to dock high sunken truck well
- Back up generator for the entire building and sprinkled
- Excellent Security Lighting
- 47 Parking Spaces



Contact Us:

JACQUELINE BOYETTE

M: 501.519.4008 | D: 501.219.0919

jboyette@commercialrealtyllc.com

Commercial Realty, LLC

#1 Remington Drive, Suite 100

Little Rock, Arkansas 72204

501.219.0919

The statements, terms and conditions set forth in this advertisement are deemed reliable but not guaranteed and remain, at all times, subject to change by the property owner(s) without notice. The property owner(s) reserve the right, at its sole and absolute discretion to adjust the price and remove the property from the market at any time without notice. The property owner(s) reserves the right to reject any and all offers and transactions are subject to the execution of the definitive agreements. Commercial Realty, LLC makes no guarantees, representations or warranties regarding its accuracy.

Aerial

#1 Remington Drive | Little Rock, AR

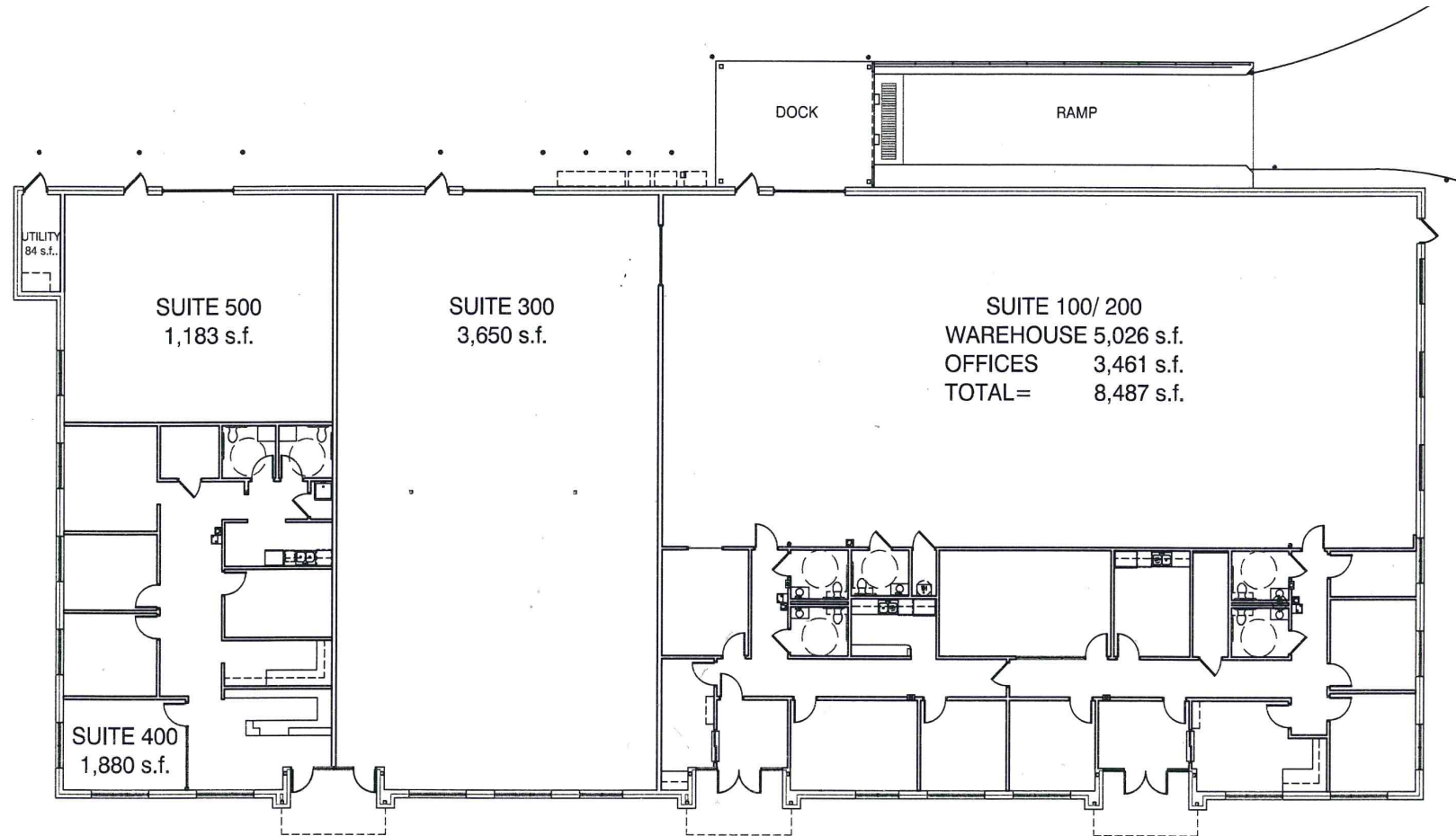
Commercial
Realty^{LLC}



Floor Plan

#1 Remington Drive | Little Rock, AR

Commercial
Realty^{LLC}



REMINGTON ROAD OFFICE BUILDING SUITES 100 THROUGH 500

- One (1) 10x10 roll up door that has dock high sunken truck well
- Two (2) 10x10 roll up drive in doors
- Four (4) front entrance doors to spaces
- 14' warehouse clear height
- Entire Building is Sprinkled