



LOCATION.
commercial real estate

**FREESTANDING
9,329 SF BUILDING
SUBLEASE OPPORTUNITY**

5000 UNION BOULEVARD

ST. LOUIS, MO

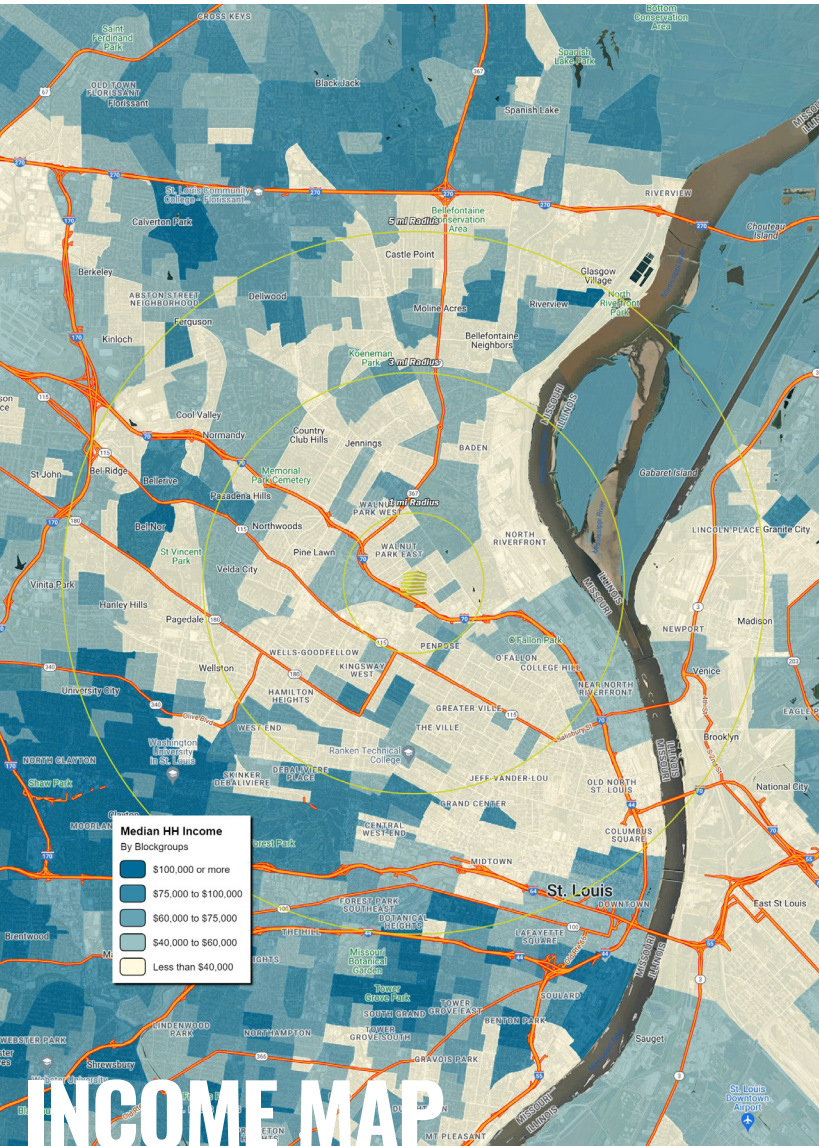


5000 UNION BLVD

AREA INFORMATION

TONY MOON
314.818.1567 (OFFICE)
314.560.0781 (MOBILE)
Tony@LocationCRE.com

SCOTT BITNEY
314.818.1500 (OFFICE)
314.276.4673 (MOBILE)
Scott@LocationCRE.com



TRADE AREA OVERVIEW

Walnut Park East is one of several neighborhoods in northwest St. Louis. It is bounded by West Florissant Avenue (Calvary Cemetery) to the northeast, Emerson Avenue to the southeast, Interstate Highway 70 (I-70) to the southwest and west, and Riverview Boulevard to the northwest.

The Walnut Park East neighborhood occupies the central position in the cluster of northwest St. Louis communities found by it and the Mark Twain neighborhood, to the southeast, and Walnut Park West, to the northwest. It was developed as a working-class residential community over the first half of this century.

DEMOGRAPHICS

	1 mile	3 miles	5 miles
POPULATION	8,606	92,790	248,357
HOUSEHOLDS	3,771	40,028	111,108
EMPLOYEES	3,801	26,966	124,952
MED HH INCOME	\$34,195	\$37,605	\$48,861

AREA RETAIL | RESTAURANTS

TACO BELL **Mobil** **White Castle**

FAMILY DOLLAR **Schnucks**

McDonald's **Rally's** **BURGER KING** **bp**

Walgreens

LOCATION.
commercial real estate

f @ in REALTY RESOURCES MEMBER

www.LocationCRE.com

THE INFORMATION IN THIS FLYER HAS BEEN OBTAINED FROM SOURCES BELIEVED RELIABLE. WHILE WE DO NOT DOUBT ITS ACCURACY, WE HAVE NOT VERIFIED IT AND MAKE NO GUARANTEE ABOUT IT. IT IS YOUR RESPONSIBILITY TO INDEPENDENTLY CONFIRM ITS ACCURACY AND COMPLETENESS. ANY PROJECTIONS, OPINIONS, ASSUMPTIONS OR ESTIMATES USED ARE FOR EXAMPLE ONLY AND DO NOT REPRESENT THE CURRENT OR FUTURE PERFORMANCE OF THE PROPERTY. THE VALUE OF THIS TRANSACTION TO YOU DEPENDS ON TAX AND OTHER FACTORS WHICH SHOULD BE EVALUATED BY YOUR TAX, FINANCIAL AND LEGAL ADVISORS. YOU AND YOUR ADVISORS SHOULD CONDUCT A CAREFUL, INDEPENDENT INVESTIGATION OF THE PROPERTY TO DETERMINE TO YOUR SATISFACTION THE SUITABILITY OF THE PROPERTY FOR YOUR NEEDS.



5000 UNION BLVD

AERIAL + DETAILS

TONY MOON

314.818.1567 (OFFICE)

314.560.0781 (MOBILE)

Tony@LocationCRE.com

SCOTT BITNEY

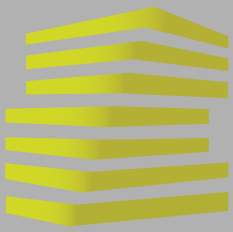
314.818.1500 (OFFICE)

314.276.4673 (MOBILE)

Scott@LocationCRE.com



- 9,329 SF SUBLEASE OPPORTUNITY IN ST. LOUIS, MO
- LEASE EXPIRES 1/31/32
- PRIME LOCATION AT THE SIGNALIZED CORNER OF LILLIAN AND UNION BLVD
- PYLON SIGNAGE AVAILABLE
- PLEASE CONTACT BROKER FOR MORE DETAILS



5000 UNION BLVD

PHOTOS

TONY MOON

314.818.1567 (OFFICE)

314.560.0781 (MOBILE)

Tony@LocationCRE.com

SCOTT BITNEY

314.818.1500 (OFFICE)

314.276.4673 (MOBILE)

Scott@LocationCRE.com



LOCATION.

commercial real estate



www.LocationCRE.com

THE INFORMATION IN THIS FLYER HAS BEEN OBTAINED FROM SOURCES BELIEVED RELIABLE. WHILE WE DO NOT DOUBT ITS ACCURACY, WE HAVE NOT VERIFIED IT AND MAKE NO GUARANTEE ABOUT IT. IT IS YOUR RESPONSIBILITY TO INDEPENDENTLY CONFIRM ITS ACCURACY AND COMPLETENESS. ANY PROJECTIONS, OPINIONS, ASSUMPTIONS OR ESTIMATES USED ARE FOR EXAMPLE ONLY AND DO NOT REPRESENT THE CURRENT OR FUTURE PERFORMANCE OF THE PROPERTY. THE VALUE OF THIS TRANSACTION TO YOU DEPENDS ON TAX AND OTHER FACTORS WHICH SHOULD BE EVALUATED BY YOUR TAX, FINANCIAL AND LEGAL ADVISORS. YOU AND YOUR ADVISORS SHOULD CONDUCT A CAREFUL, INDEPENDENT INVESTIGATION OF THE PROPERTY TO DETERMINE TO YOUR SATISFACTION THE SUITABILITY OF THE PROPERTY FOR YOUR NEEDS.