



THE
MULTIFAMILY
FIRM™

MultifamilyFirm.com

**New to
Market!**



65-Unit Multifamily Development in Plant City, FL



\$2,149,000
LIST PRICE



65 UNITS



5.48 ACRES



PLANT CITY, FL
HILLSBOROUGH CTY



I-4 CORRIDOR

ACCESS OFFERING MEMORANDUM & CONSTRUCTION PLANS AT [MULTIFAMILYFIRM.COM](https://www.MultifamilyFirm.com)

PROPERTY HIGHLIGHTS



STRAWBERRY FLATS APARTMENTS

1308 EAST ALSOBROOK STREET, PLANT CITY, FL



PROPERTY HIGHLIGHTS

- 65-Unit Multifamily Development Opportunity in Plant City, FL
- Strategic Central Location | Positioned in the I-4 Corridor Between Tampa & Orlando, Providing Direct Access to Two of Florida's Fastest-Growing Metros
- Diverse Employment Base | Strong Renter Demand Supported by Healthcare, Logistics, Manufacturing, Education, and Service Sector Jobs Within a 15-30 Minute Drive
- Healthcare Anchor | BayCare's New \$300M South Florida Baptist Hospital Campus Located Just Minutes Away
- Education Hub | Hillsborough Community College Plant City Campus Within 2 Miles, With the University of South Florida (25 Miles) Further Expanding the Renter Pool
- Nearby Employment Anchor | Gordon Food Service Distribution Center, Employing Numerous Warehouse, Logistics, & Clerical Staff, Strengthening the Area's Employment Base
- Major Industrial Employers | Amazon's 1M+ SF Fulfillment Center on County Line Rd, Plus an Additional 700k+ SF Of Industrial Development Underway in the Corridor



03 S GORDON
ST

1303 TENNESSEE
ST

1309 TENNESSEE
ST

1313 TENNESSEE
ST

1319 TENNESSEE
ST

801 S MORGAN
ST

1308 E ALSOBROOK
ST

714

ET
1302 E ALSOBROOK
ST

1304 E ALSOBROOK
ST

1404 E ALSOBROOK
ST

E ALSOBROOK
ST PORTION



KYLE KEELAN

Managing Partner

Direct: 813.773.6737 **Cell:** 727.251.5953
Kyle@MultifamilyFirm.com



PHIL GINEXI

Co-Founder

Direct: 941.444.6160 **Cell:** 631.404.6060
Phil@MultifamilyFirm.com





THE
MULTIFAMILY
FIRM™

STRAWBERRY FLATS APARTMENTS

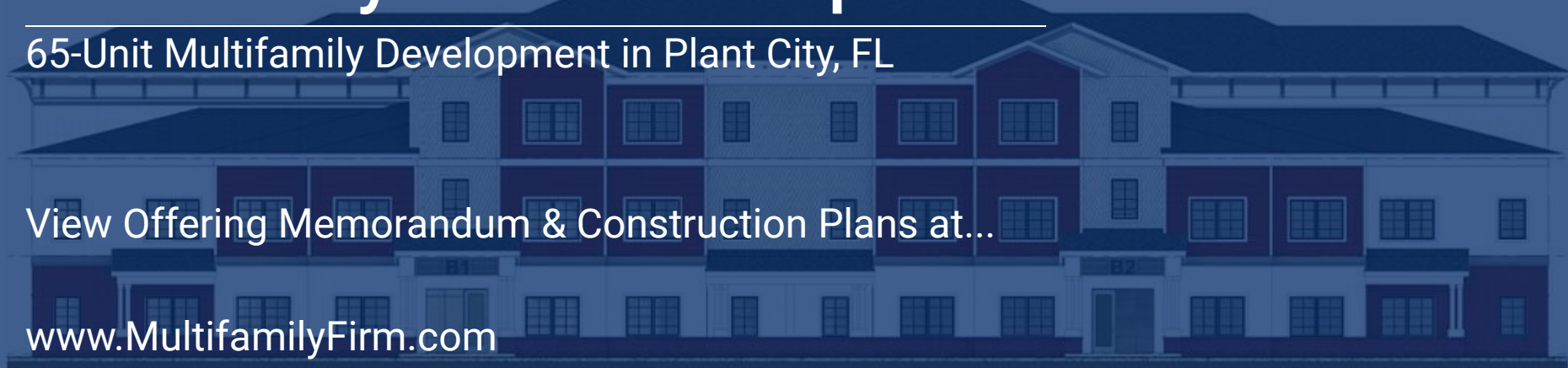
1308 EAST ALSOBROOK STREET, PLANT CITY, FL

Strawberry Flats Development

65-Unit Multifamily Development in Plant City, FL

View Offering Memorandum & Construction Plans at...

www.MultifamilyFirm.com



FOR MORE INFORMATION CONTACT:

Kyle Keelan
Managing Partner
813.773.6737

Kyle@MultifamilyFirm.com

Phil Ginexi
Co-Founder
941.444.6160

Phil@MultifamilyFirm.com

MULTIFAMILYFIRM.COM