

 CUSHMAN &
WAKEFIELD

 SHELDON
WISEMAN
Commercial Real Estate

ENTERPRISE TECHNOLOGY CENTRE

Scotts Valley, CA

Enterprise Technology Centre

100 Enterprise Way, Scotts Valley, CA
±430,415 SF Multi-Building Office Campus

Steven Sheldon
Principal
831.459.6450
ssheldon@sheldonwiseman.com
Lic #01028650

Jim Wiseman
Principal
831.459.6440
jwiseman@sheldonwiseman.com
Lic #01104278



Highlights

- One of the Highest Quality Office Properties on the West Coast
- World Class Corporate Campus Environment
- Designed by Renowned Architect Kevin Roche
- Divisible as low as ±1,277 SF - up to ±59,090 contiguous SF
- \$2.95 Full Service per Square Foot per Month
- On-Site Amenities
 - Fitness Center with Spa Services
 - Pool
 - Tennis Courts
 - Theater Quality Auditorium
 - Outdoor Amphitheater
 - Cafeteria / Restaurant
- Reverse Commute : Quick 15 Minute Drive from Los Gatos and the Silicon Valley
- 10 Minutes from Santa Cruz
- Abundant Glass and Natural Light in Tranquil Park-Like Setting with Dramatic Water Features
- Atriums, Courtyards, and Balconies
- Call to Tour



Drew Arvay | Managing Partner, Director
P +1 408 436 3647
drew.arvay@cushmanwakefield.com
LIC #00511262





± 430,415 SF Multi-Building Office Campus



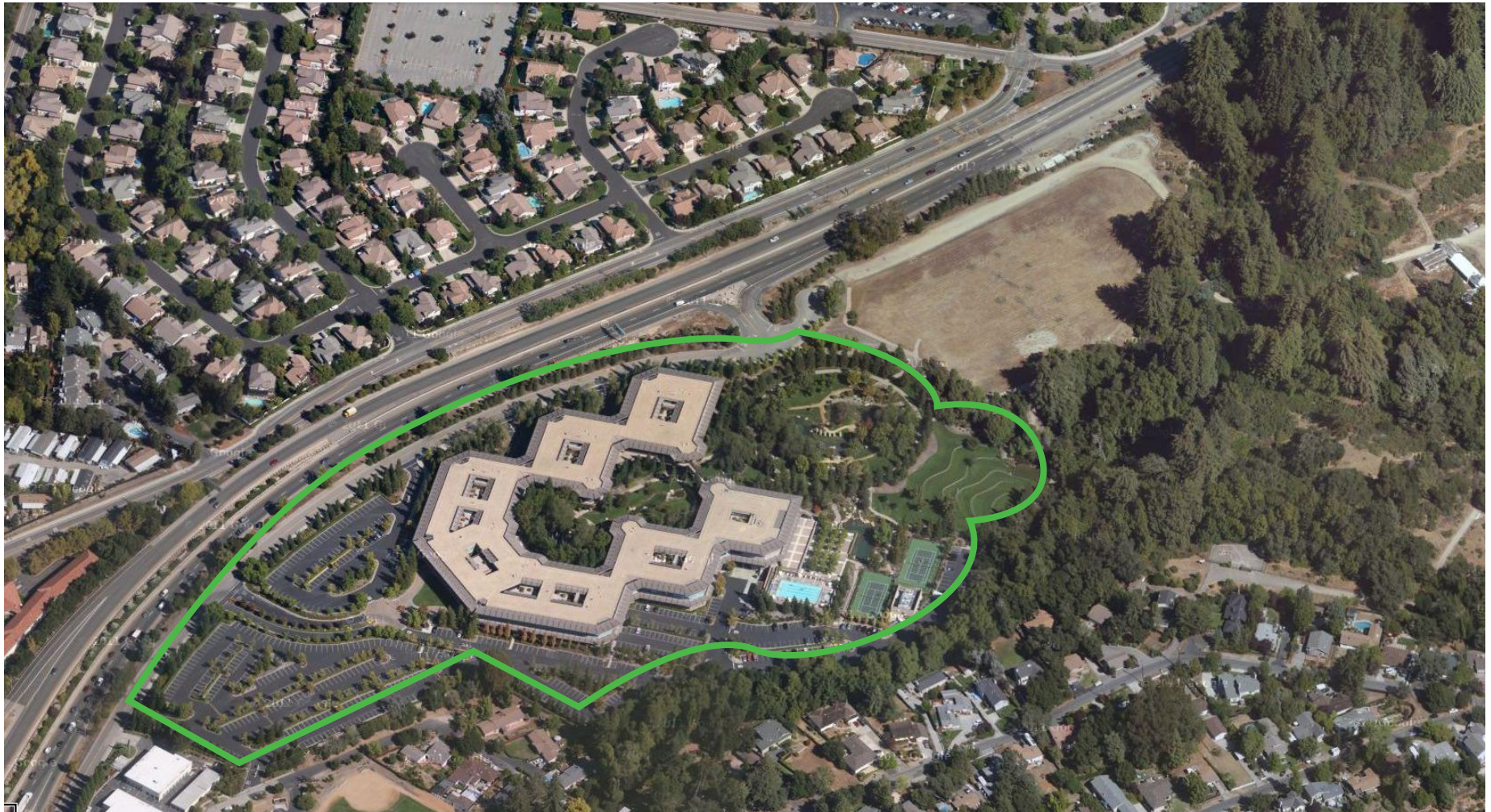


Enterprise Technology Centre

100 Enterprise Way, Scotts Valley, CA
± 430,415 SF Multi-Building Office Campus



AERIAL

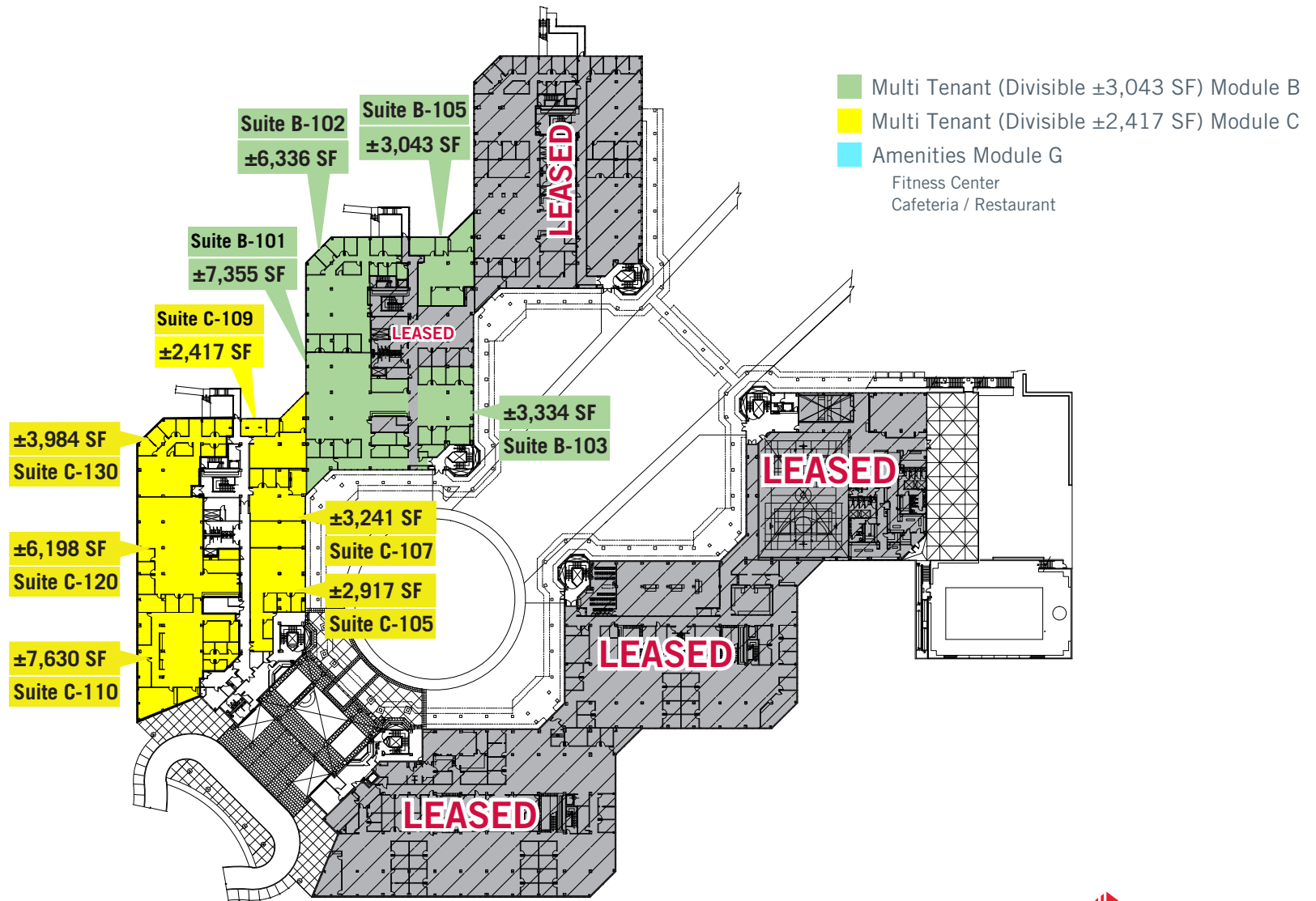


Enterprise Technology Centre

100 Enterprise Way, Scotts Valley, CA
± 430,415 SF Multi-Building Office Campus



First Floor

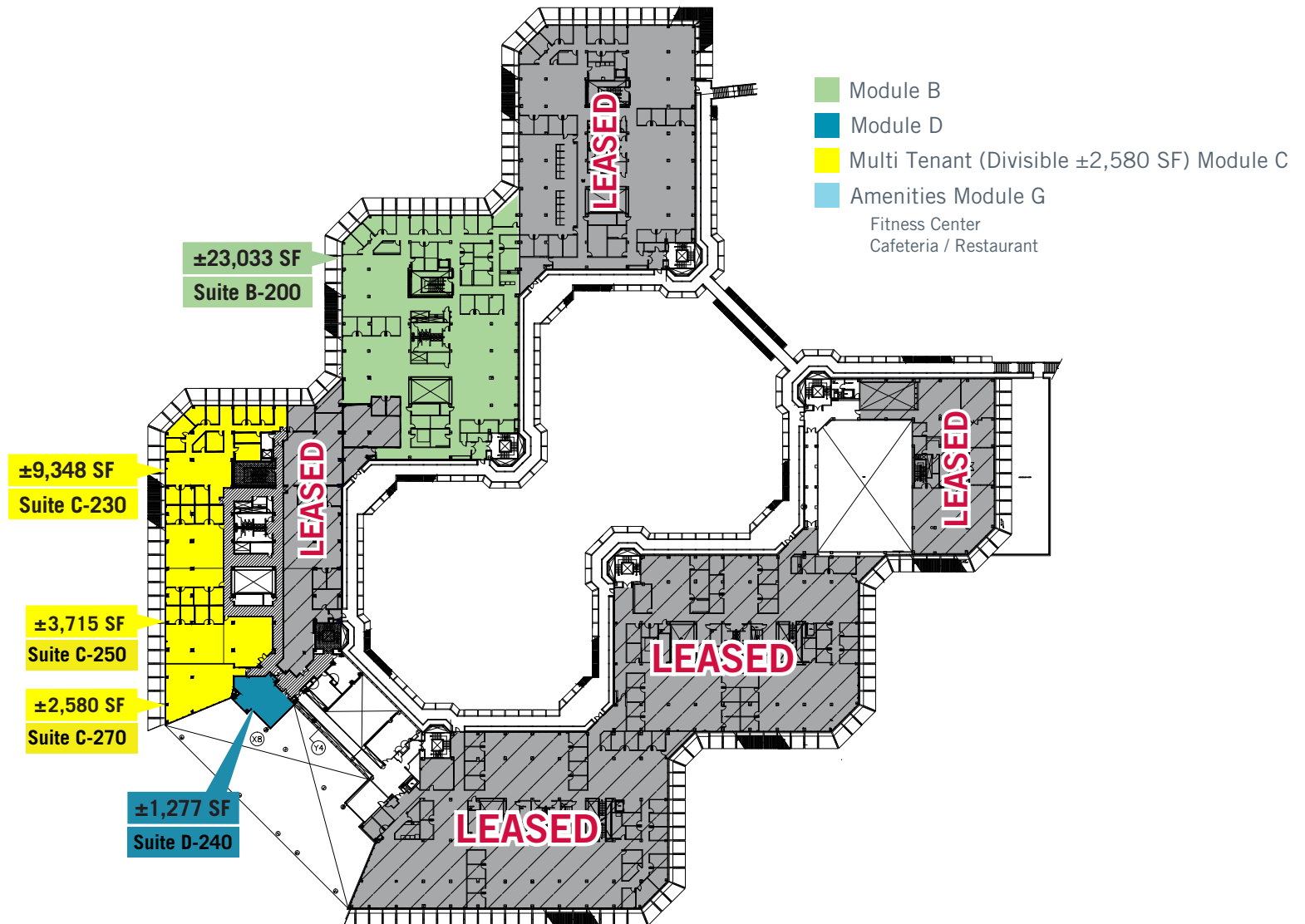


Enterprise Technology Centre

100 Enterprise Way, Scotts Valley, CA
±430,415 SF Multi-Building Office Campus



Second Floor

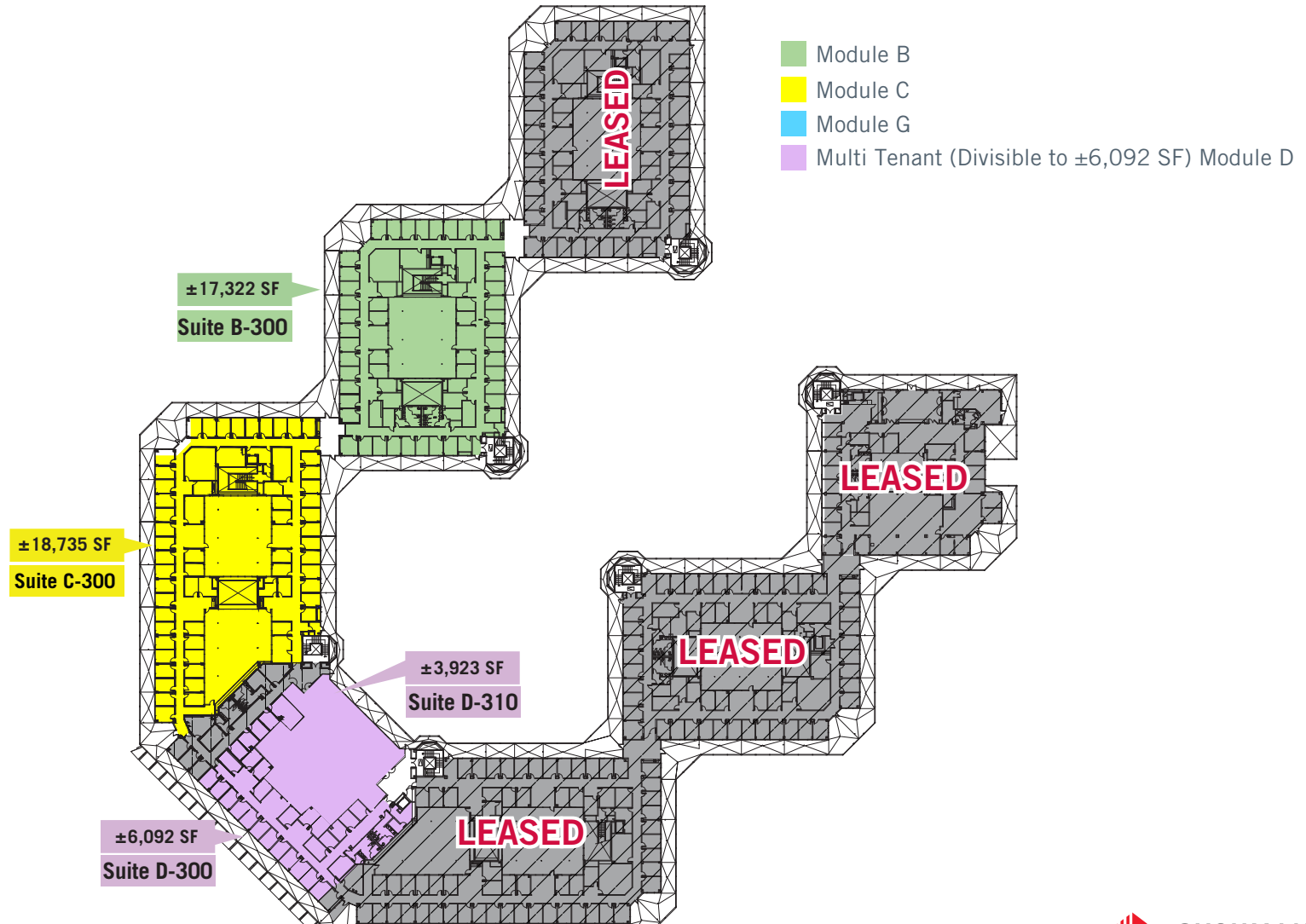


Enterprise Technology Centre

100 Enterprise Way, Scotts Valley, CA
±430,415 SF Multi-Building Office Campus



Third Floor



For more information, contact:



1200 Pacific Avenue, Suite 390
Santa Cruz, CA 95060
ph: 831.454.9400
fx: 831.459.7988

www.sheldonwiseman.com



300 Santana Row, Fifth Floor
San Jose, California 95128
P +1 408 615 3400
F +1 408 615 3444

cushmanwakefield.com

Steven Sheldon
Principal
831.459.6450
ssheldon@sheldonwiseman.com
Lic #01028650

Jim Wiseman
Principal
831.459.6440
jwiseman@shldonwiseman.com
Lic #01104278

Drew Arvay
Managing Partner, Director
P +1 408 436 3647
drew.arvay@cushwake.com
LIC #00511262

