

5200 W. Washington Blvd.
LOS ANGELES, CA 90016
AVAILABLE FOR SUBLEASE

SHORT TERM LEASE AVAILABLE

OFFERING MEMORANDUM



CITYSTREET
COMMERCIAL

Area Highlights



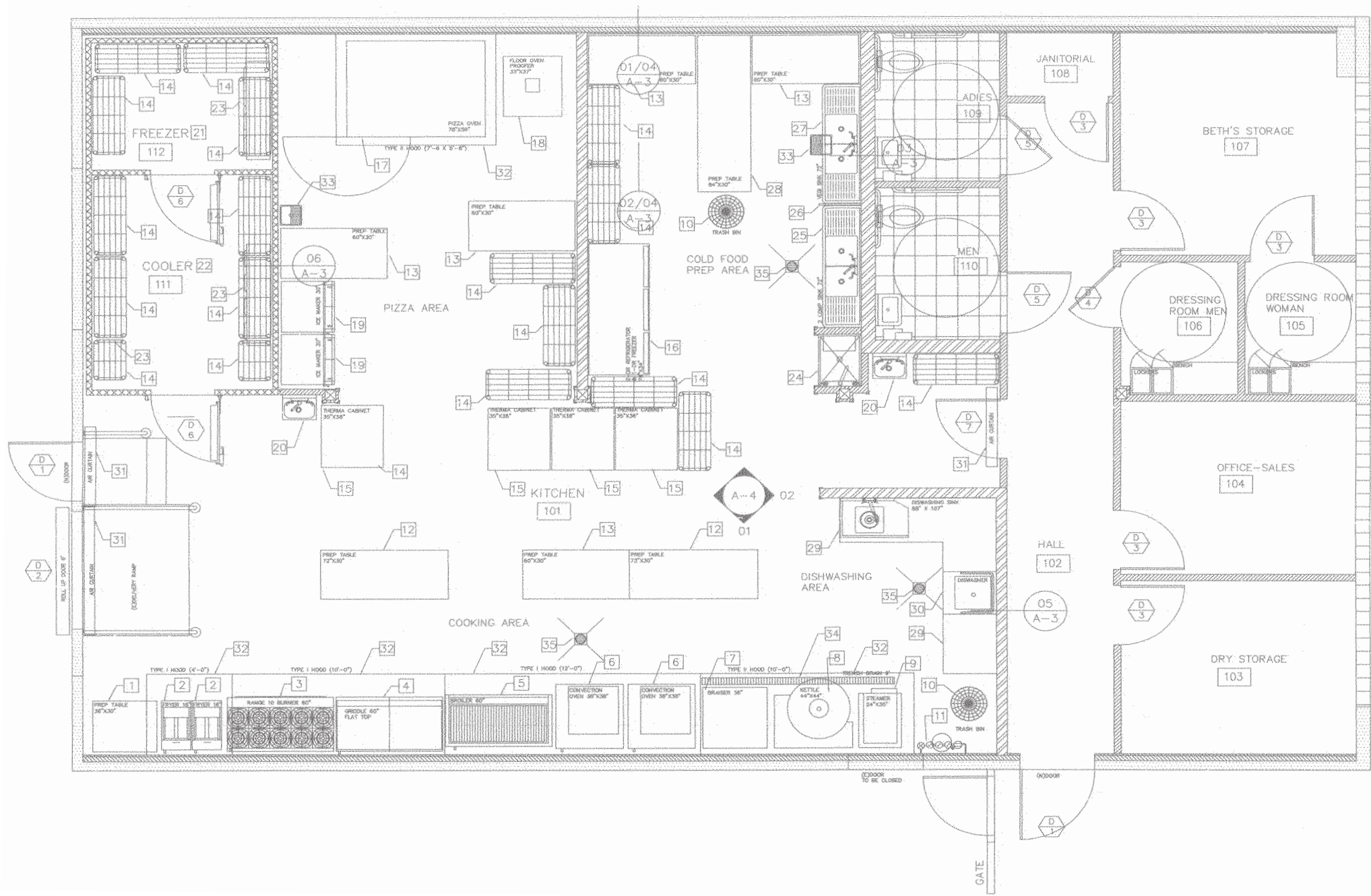
CityStreet Commercial is excited to present **5200 W. Washington Blvd.** to the Los Angeles market. This standalone, turn-key commercial kitchen is fully equipped and ready for use, featuring two spacious hoods, five office/storage rooms, a walk-in cooler/freezer, and a private gated parking lot. Centrally located with easy access to the 10/405/110/5 freeways, Culver City, Westside, Beverly Hills, Hollywood and Downtown LA.

Deal Points

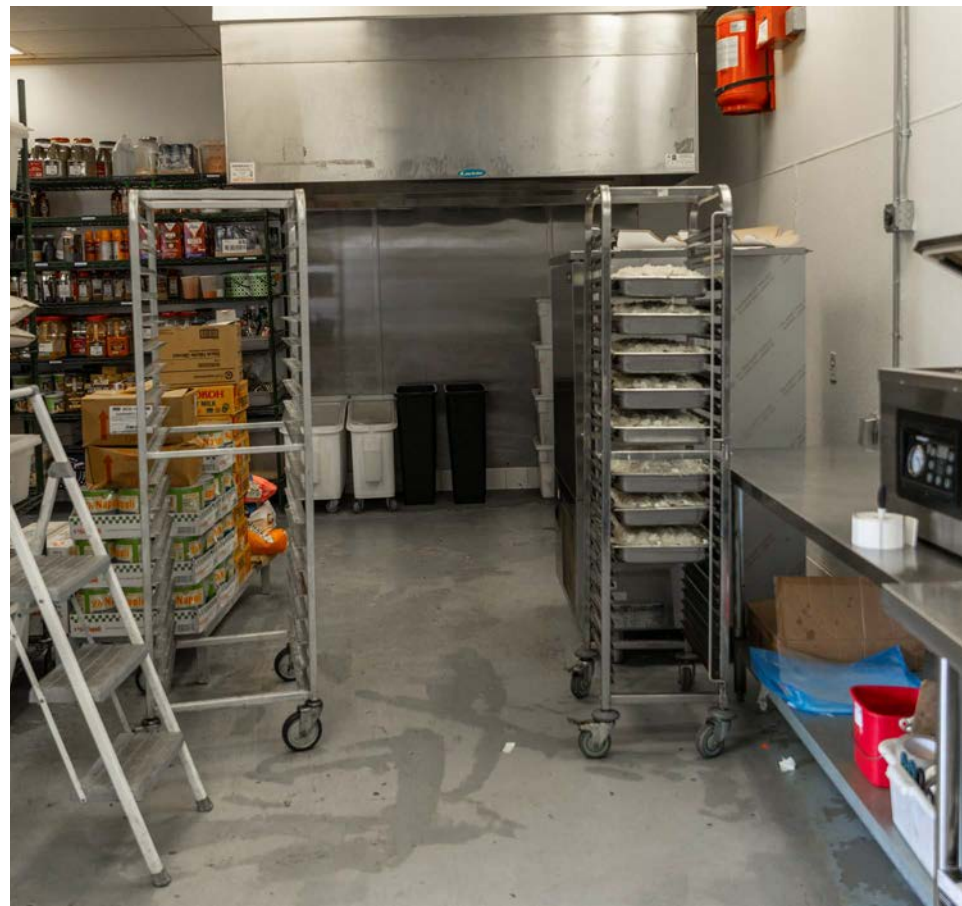
- + **Kitchen Equipment Available for Purchase**
- + Interior: Appx 2,280 SF
- + Lot Size: Appx 7,405 SF
- + Rental Rate: Negotiable
- + Lease Expires: October 2032 + (2) two (5) five-year options
- + Secured Large On-Site Parking Lot
- + Exterior Storage Facilities



Floor Plan



Property Photos



CITYSTREET
COMMERCIAL

5200 W. Washington Blvd.

LOS ANGELES, CA 90016

BUSINESS ASSET SALE

Contact us:

Shane Won Murphy

Executive Vice President

+1 626 233 0071

shane@citystreetcre.com

CA License No. 01479816

Christian Montoya

Senior Associate | Director of Marketing

+1 562 252 5770

christian@citystreetcre.com

CA License No. 02093406



Disclaimer

This document has been prepared by CityStreet Commercial for advertising and general information only. CityStreet Commercial makes no guarantees, representations or warranties of any kind, expressed or implied, regarding the information including, but not limited to, warranties of content, accuracy and reliability. Any interested party should undertake their own inquiries as to the accuracy of the information. CityStreet Commercial excludes unequivocally all inferred or implied terms, conditions and warranties arising out of this document and excludes all liability for loss and damages arising there from. This publication is the copyrighted property of CityStreet Commercial and/or its licensor(s). ©2025. All rights reserved.