

# PRIME COMMERCIAL/MEDICAL/OFFICE SITE

Colonia De Salud, Sierra Vista, AZ. 85635

## Property Highlights

- The Best Locations for medical buildings in Cochise County.
- All Utilities at or near site.
- Immediate Proximity to Canyon Vista Medical Center

**PRICE.. \$8 per SF**

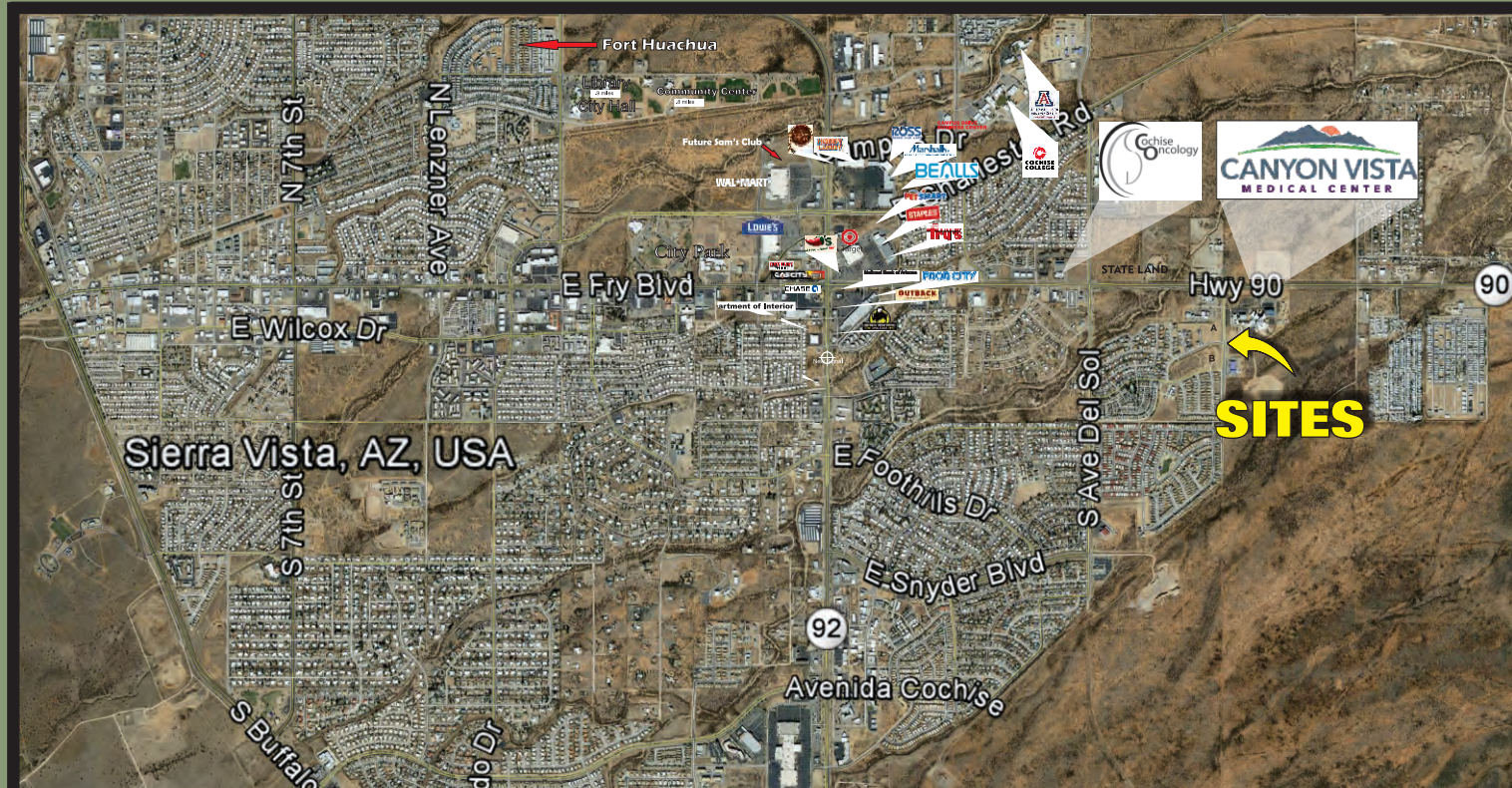
Parcel A # . . . . . 107-49-787B  
Land Area . . . . . .94 Acres  
Property Taxes . . . \$1,286.12  
**PRICE** \_\_\_\_\_ **\$327,384**

Parcel B # . . . . . 107-49-788  
Land Area . . . . . 3.57 Acres  
Property Taxes . . . \$1,921.20  
**PRICE** \_\_\_\_\_ **\$1,244,000**

Zoning . . . . . General Commercial  
Water . . . . . Liberty  
Sewer . . . . . City  
Gas . . . . . Southwest Gas  
Electric . . . . . SSVEC  
CC&R's . . . . . No

*For More Information Contact*

**Frank T. Moro, DB**  
frank@fwpc.net  
**(520)458-1666**



## Description

These sites are ideally situated along Colonia De Salud, adjacent to the Canyon Visa Medical Center, the regional hospital for southeastern Arizona. Both sites are ready for development for prime medical office space or a small medical park or professional services.

**(520) 458-1666**  
Toll Free: 1(800)320-2381  
Fax: (520) 459-0718



**FIRST WEST**  
PROPERTIES CORPORATION

[www.fwpc.net](http://www.fwpc.net)  
1700 South Highway 92, Ste. E100  
Sierra Vista, Arizona 85635

# AERIAL

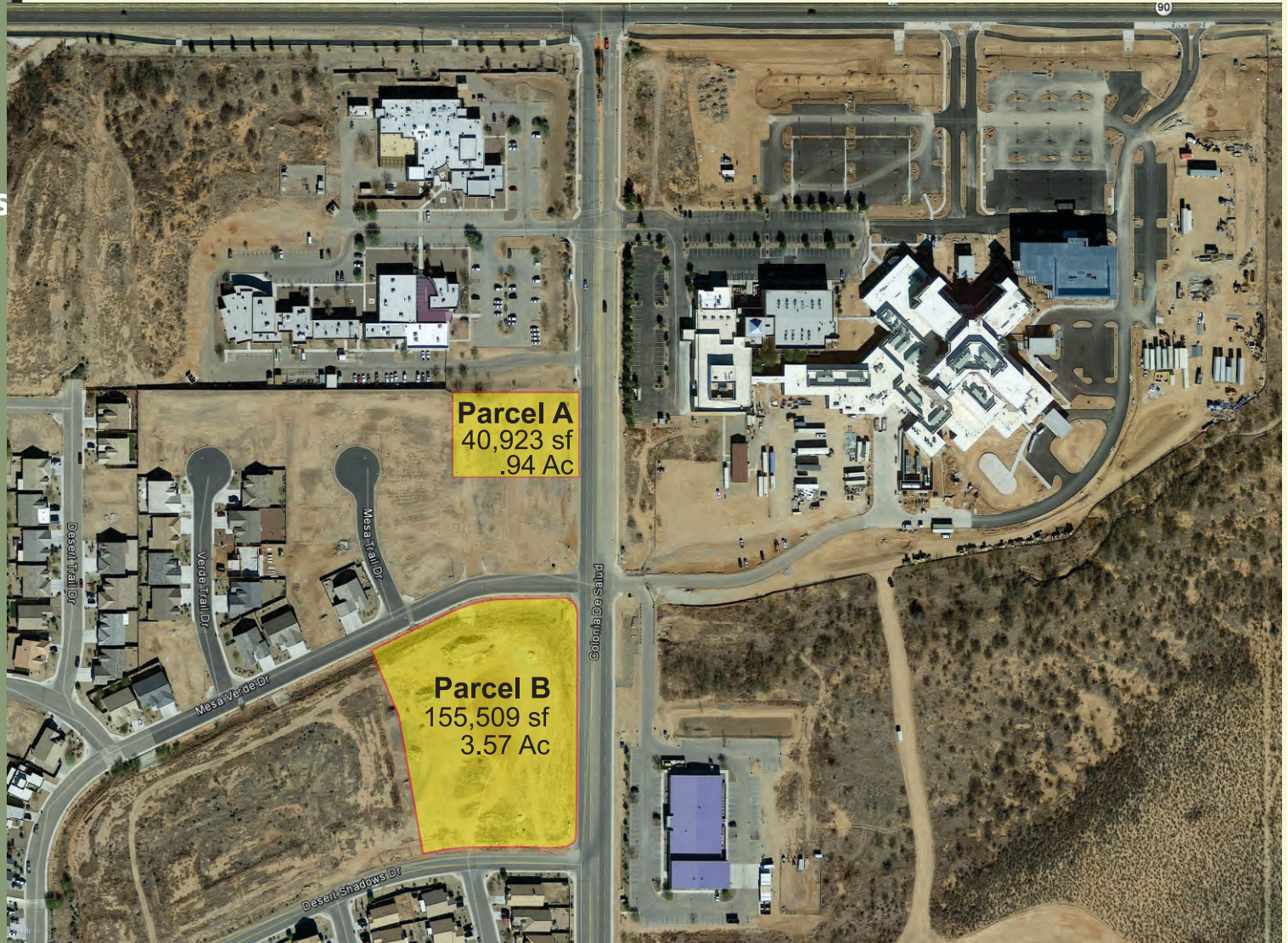
▶ Great Location  
For Medical or  
Professional Offices

▶ Development  
Ready

▶ Adjacent to  
Canyon Vista  
Medical Center

▶ Great Value

**Call Us Today...**  
**(520)458-1666**



**FIRST WEST**  
PROPERTIES CORPORATION

(520) 458-1666 • Toll Free: 1(800)320-2381 • [www.fwpc.net](http://www.fwpc.net)

# PLAT MAP

MAP 2

