



Excellent retail lease opportunity

Chris Valeriote
Sales Representative, Principal
+1 226 366 9014
chris.valeriote@avisonyoung.com

Mason Sinkeldam
Sales Representative
+1 226 366 9070
mason.sinkeldam@avisonyoung.com



Property details

Excellent opportunity to lease well-appointed retail / office space situated on the outskirts of downtown Guelph.

The space allows for great signage opportunity and D.2-1 zoning allows for a wide array of permitted uses.

Available area 1,636 sf

Zoning D.2-1

Parking Common

Public transit Immediate access

Signage Available

Asking net rate \$18 psf

Additional rent \$8 psf



 **153,809** Population of Guelph

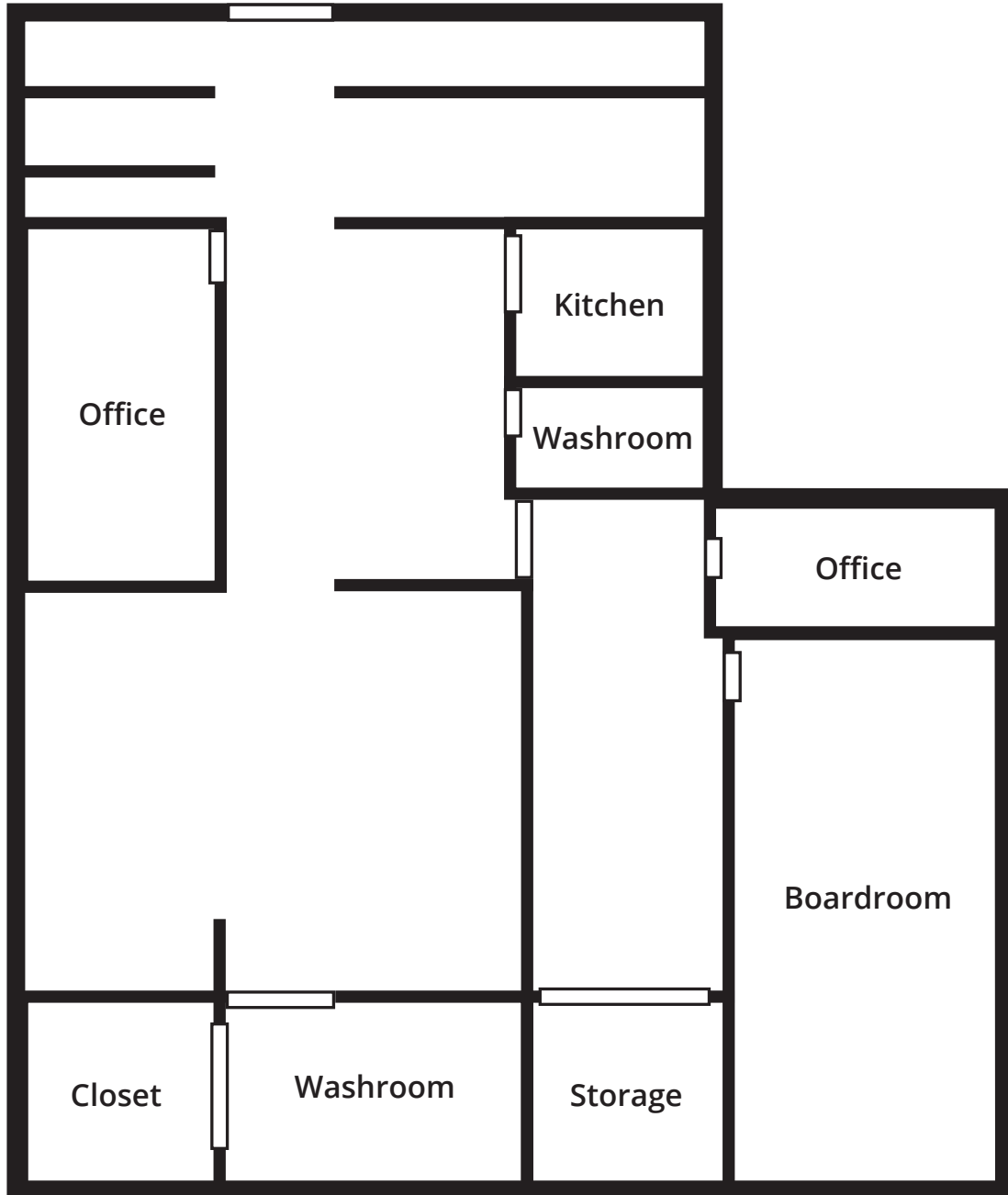
 **167,685** Daytime Population

 **\$123,171** Avg. Household Income

 **38.3** Median Age

Floor plan

SUFFOLK STREET EAST





Get more information

Chris Valeriote

Sales Representative, Principal
+1 226 366 9014
chris.valeriote@avisonyoung.com

Mason Sinkeldam

Sales Representative
+1 226 366 9070
mason.sinkeldam@avisonyoung.com

Avison Young Commercial Real Estate Services, LP, Brokerage
231 Shearson Crescent, Suite 102
Cambridge ON N1T 1J5
T +1 226 366 9090 F +1 866 541 9755

