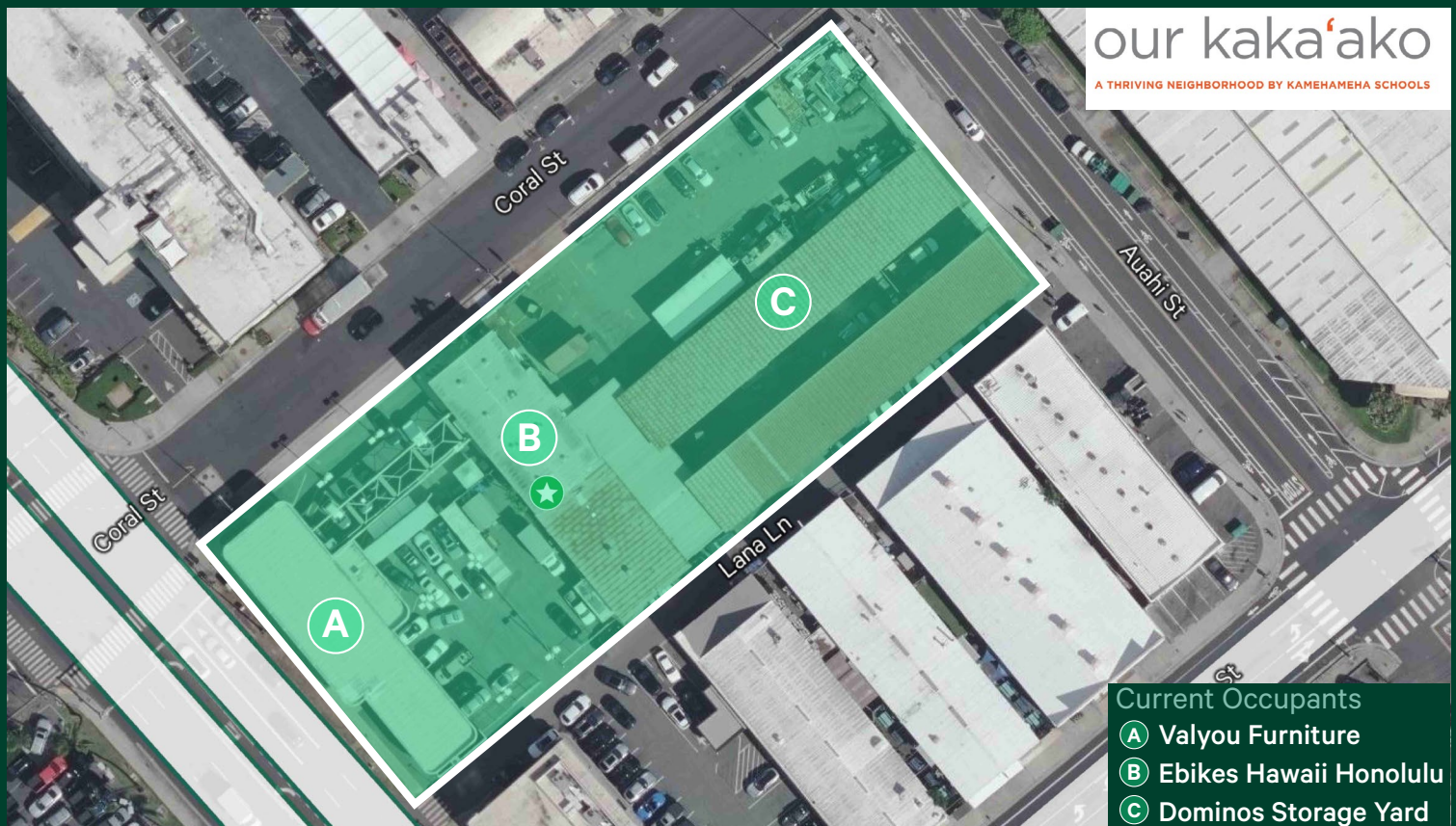


704 Ala Moana Blvd

Honolulu, HI 96813

704 Ala Moana Blvd
Honolulu, HI 96813
www.cbre.com/hawaii



Rarely Available Large Lot in Honolulu (Kaka'ako) – Available with 30 Days' Notice

The entire highlighted lot is approximately 50,042 square feet and offers a dynamic short-term leasing opportunity in town, ideal for contractors, base yards, overflow storage, or even creative pop-up uses. The site features overhead sheds for exterior storage, and select existing buildings may be suitable for office, retail, or additional storage. While long-term development is planned for this block (Block G), tenants can lease through December 31, 2026, with the landlord retaining a right to terminate on or after June 30, 2026. The entire lot may be leased to a single user, or divided into sections—including a ~26,000 SF rear yard (labeled “C”) which also has a small ~2,000 SF office on-site, a ~4,500 SF building (labeled “A”) currently occupied by Valyou Furniture and accompanied parking, and a ~5,000 SF building (labeled “B”) occupied by E-Bikes Hawaii and additional parking.

*Please do not disturb the current Tenants onsite

704 Ala Moana Blvd
Honolulu, HI 96813

For Lease

The Opportunity

Land Area	50,042 square feet
Anticipated LCD	Available with 30 days' notice. Current occupant has a rolling termination clause
Base Rent	Call for Details
Term limit	December 31, 2026
Zoning	HCDA - Commercial
Real Property Taxes (RPT)	\$15,055 per month



Lot Size = 50,042 square feet of commercial land (~ 360' X 140')

Contact us

Nicholas T. Adler
First Vice President
+1 808 859 0588
nicholas.adler@cbre.com
RS-78419

© 2025 CBRE, Inc. All rights reserved. This information has been obtained from sources believed reliable, but has not been verified for accuracy or completeness. You should conduct a careful, independent investigation of the property and verify all information. Any reliance on this information is solely at your own risk. CBRE and the CBRE logo are service marks of CBRE, Inc. All other marks displayed on this document are the property of their respective owners, and the use of such logos does not imply any affiliation with or endorsement of CBRE. Photos herein are the property of their respective owners. Use of these images without the express written consent of the owner is prohibited.

www.cbre.com/Hawaii

CBRE