



4400 W. 48th Street
Sioux Falls, SD 57108

Sale Price	\$9.75 / SF
SD Real Estate Taxes	\$379.97

PROPERTY HIGHLIGHTS

- 1.5 acres of improved land (66,175 SF)
- North end of site has excellent view of pond at 57th and Solberg
- Zoned for office and retail use

LOCATION DESCRIPTION

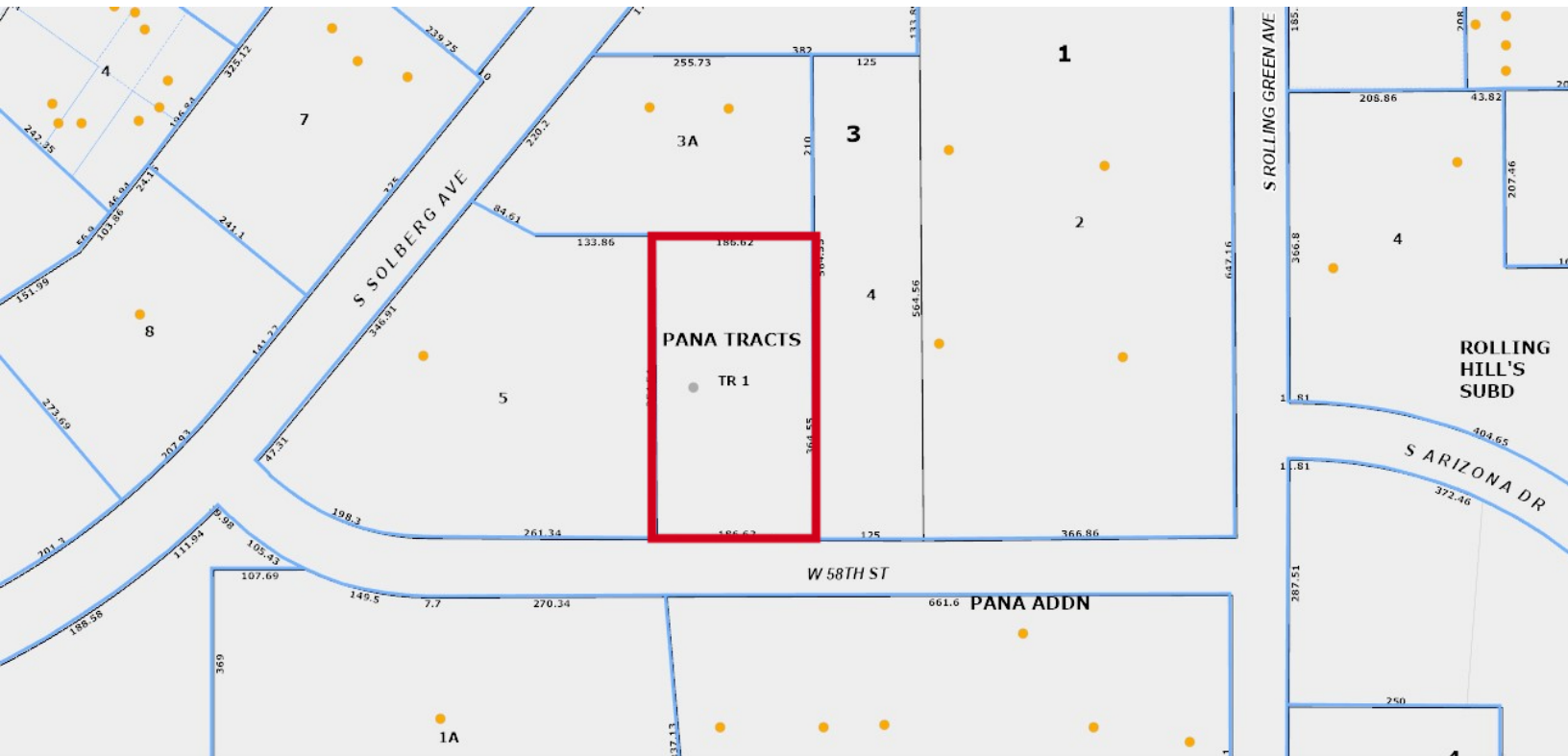
Located at the intersection of I-29 and I-229 in a successful and established business park
Area neighbors include Journey Construction, Sky Zone Trampoline Park, Great Plains Dental, Bluestone FCU, Sammons Financial Group, Farm Credit Services of America, Killarney Crossing Apartments & Townhomes



PLAT MAP

TBD W. 58TH STREET
Sioux Falls, SD 57108

FOR SALE
Office/Retail Land



AERIAL

TBD W. 58TH STREET
Sioux Falls, SD 7108

FOR SALE
Office/Retail Land



Map data © 2023 Google Imagery © 2023 , Airbus, CNES / Airbus, Maxar Technologies, USDA/FPAC/GEO