

Land For Sale 29.2 Acres

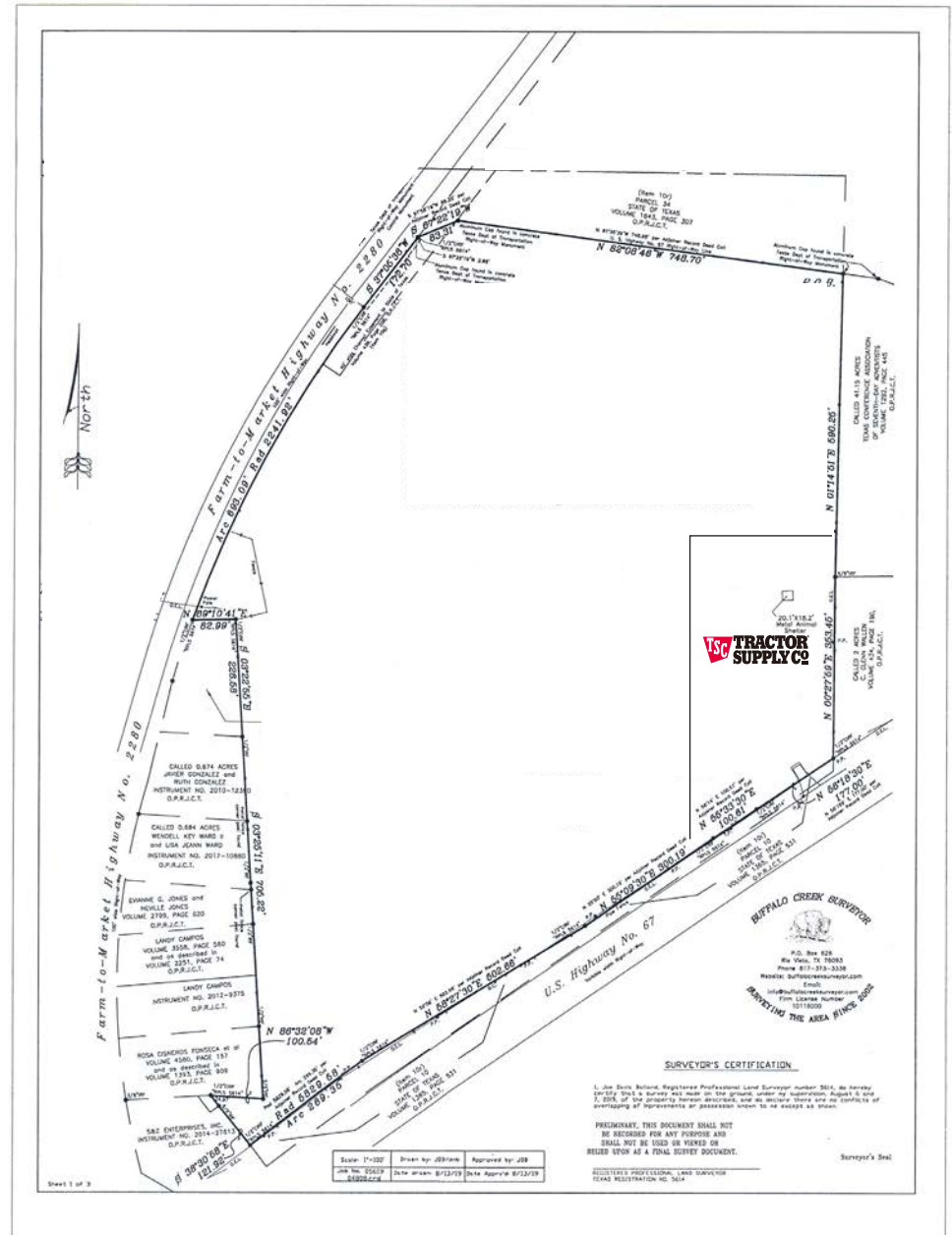
SEQ US 67 & FM 2280
Keene, TX 76059

About the Property

PROPERTY INFORMATION

- 29.2 Acres
- All utilities to the site
- Property has frontage on 3 major thoroughfares
- Tractor Supply recently opened
- Unlimited development potential
- Pad sites available

AREA ATTRACTIONS



Chris Corbin

817-259-3503

Chris.Corbin@Transwestern.com

Ben McBroom

817-259-3538

Ben.McBroom@Transwestern.com



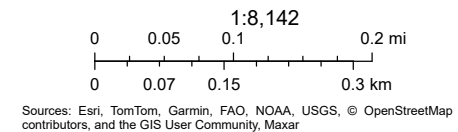
Utility Map



8/27/2025

- | | | |
|-------------------------|----------------------------|---------------|
| Sanitary Sewer Manholes | Fire Hydrants | Parcels |
| Sewer Gravity Mains | Water Mains | Streets |
| Water System Valves | ETJ | World Imagery |
| City Limits | Low Resolution 15m Imagery | |

High Resolution 60cm Imagery
 High Resolution 30cm Imagery
 Citations
 2.4m Resolution Metadata



Chris Corbin

817-259-3503
Chris.Corbin@Transwestern.com

Ben McBroom

817-259-3538
Ben.McBroom@Transwestern.com

Aerial



Chris Corbin

817-259-3503
Chris.Corbin@Transwestern.com

Ben McBroom

817-259-3538
Ben.McBroom@Transwestern.com



Demographics

1 MILE

968

POPULATION

329

HOUSEHOLDS

67,145

MEDIAN HOUSEHOLD INCOME

\$79,242

AVERAGE HOUSEHOLD INCOME

34.9

MEDIAN AGE

3 MILES

21,835

POPULATION

8,117

HOUSEHOLDS

\$64,994

MEDIAN HOUSEHOLD INCOME

\$80,824

AVERAGE HOUSEHOLD INCOME

33.8

MEDIAN AGE

5 MILES

34,406

POPULATION

12,910

HOUSEHOLDS

\$66,894

MEDIAN HOUSEHOLD INCOME

\$86,567

AVERAGE HOUSEHOLD INCOME

33.9

MEDIAN AGE



Get in Touch

Chris Corbin

817-259-3503

Chris.Corbin@Transwestern.com

Ben McBroom

817-259-3503

Ben.McBroom@Transwestern.com