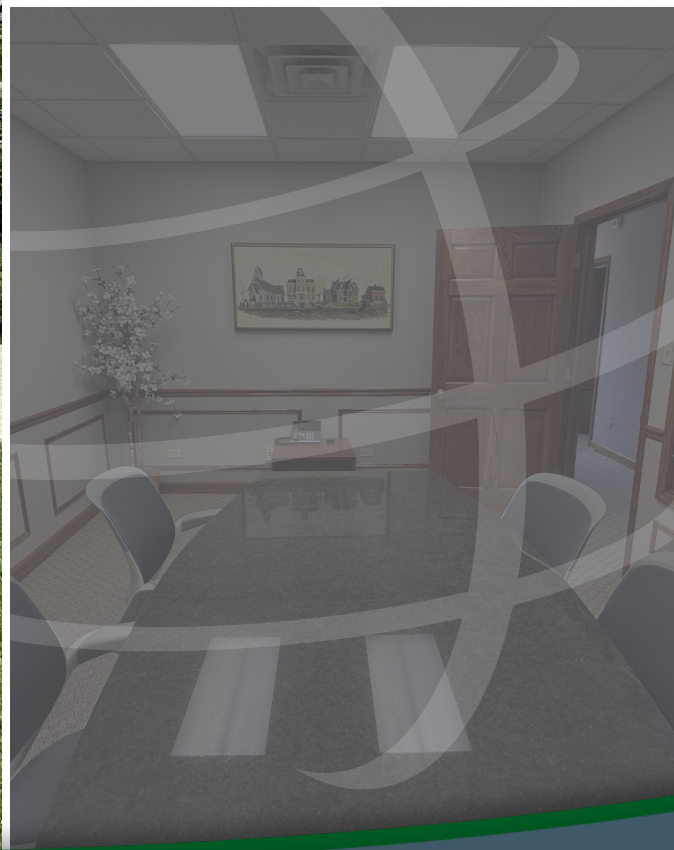


15424 S HARLEM AVE, ORLAND PARK, IL 60462



For more information, please contact:

CHANDLER KIMMEL
Associate Broker
219.864.0200
ckimmel@latitudeco.com

ANTONY MIOCIC
219.864.0200
amiocic@latitudeco.com



LATITUDE
COMMERCIAL
REAL ESTATE SERVICES

LATITUDECO.COM

ORLAND PARK OFFICE CONDO

15424 S Harlem Ave, Orland Park, IL 60462



EXECUTIVE SUMMARY



OFFERING SUMMARY

Available SF: 1,850 SF

Lease Rate: \$20.00 SF/yr (NNN)

Lot Size: 1.81 Acres

Year Built: 1996

Building Size: 1850 SF

PROPERTY HIGHLIGHTS

- Well maintained office condo for lease at Courtyard Professional Offices
- Approximately 1,850 SF of turnkey space
- Layout consists of 5 offices, a conference room, reception, kitchenette, and restroom
- North endcap unit
- Signage and visibility from South Harlem Avenue
- Over 34,000 VPD



CHANDLER KIMMEL

Associate Broker
219.864.0200
ckimmel@latitudeco.com

ANTONY MIOCIC

219.864.0200
amiocic@latitudeco.com

ORLAND PARK OFFICE CONDO

15424 S Harlem Ave, Orland Park, IL 60462



PROPERTY DESCRIPTION



PROPERTY DESCRIPTION

The subject property is a well maintained 1,850 SF Office condo in the Courtyard Professional Office Park. The layout consists of 5 offices, a conference room, reception, kitchenette, and restroom. The property offers great visibility and signage on Harlem Avenue with over 34,000 vehicles per day. The available suite is on the north end cap.

LOCATION DESCRIPTION

Orland Park is a village in Cook County, Illinois, with a small portion in Will County. The village is a suburb of Chicago. Per the 2020 census, Orland Park had a population of 57,751. Orland Park's businesses and jobs include finance, retail, services and healthcare. Shopping complexes include Orland Park Crossing and Orland Square Mall. Orland Park plans to develop a new district, the Orland Park Downtown, previously called the Main Street Triangle, as well as the I-80 Business District



CHANDLER KIMMEL

Associate Broker
219.864.0200
ckimmel@latitudeco.com

ANTONY MIOCIC

219.864.0200
amiocic@latitudeco.com

ORLAND PARK OFFICE CONDO

15424 S Harlem Ave, Orland Park, IL 60462



ADDITIONAL PHOTOS



CHANDLER KIMMEL
Associate Broker
219.864.0200
ckimmel@latitudeco.com

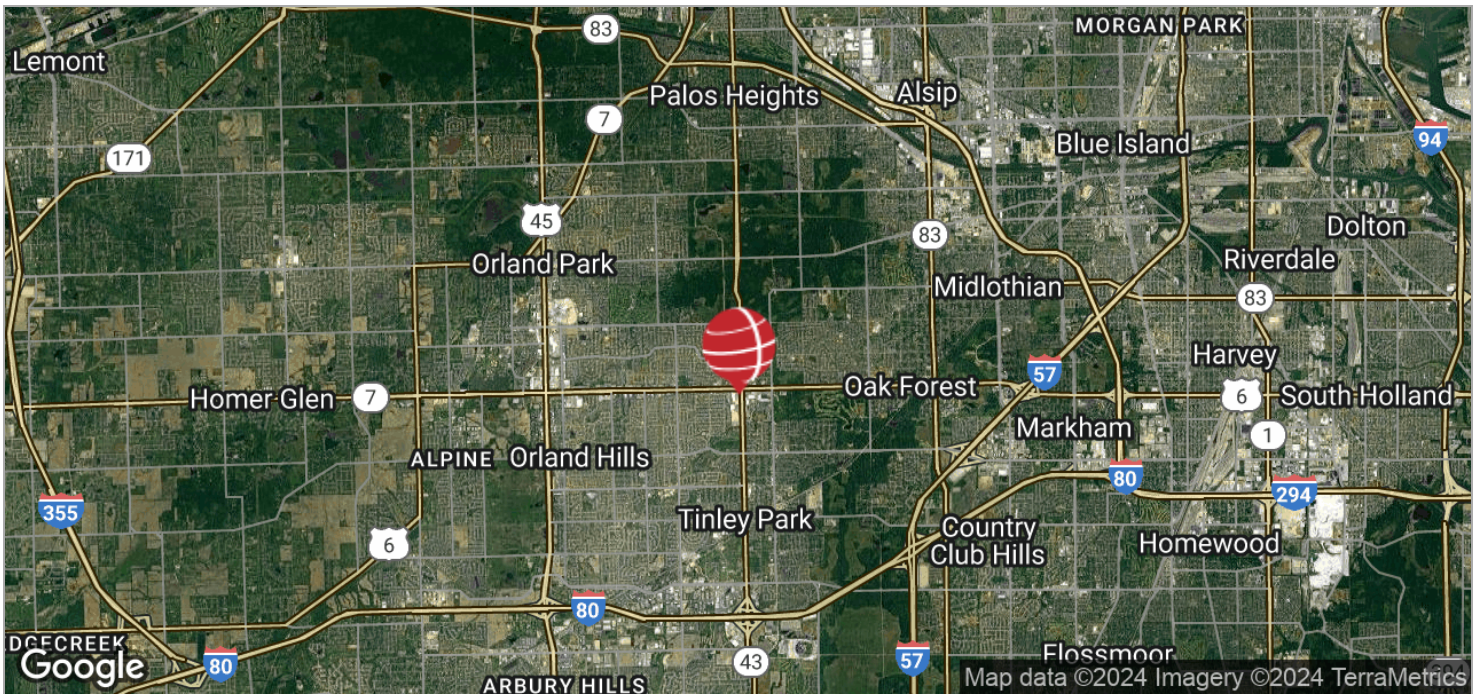
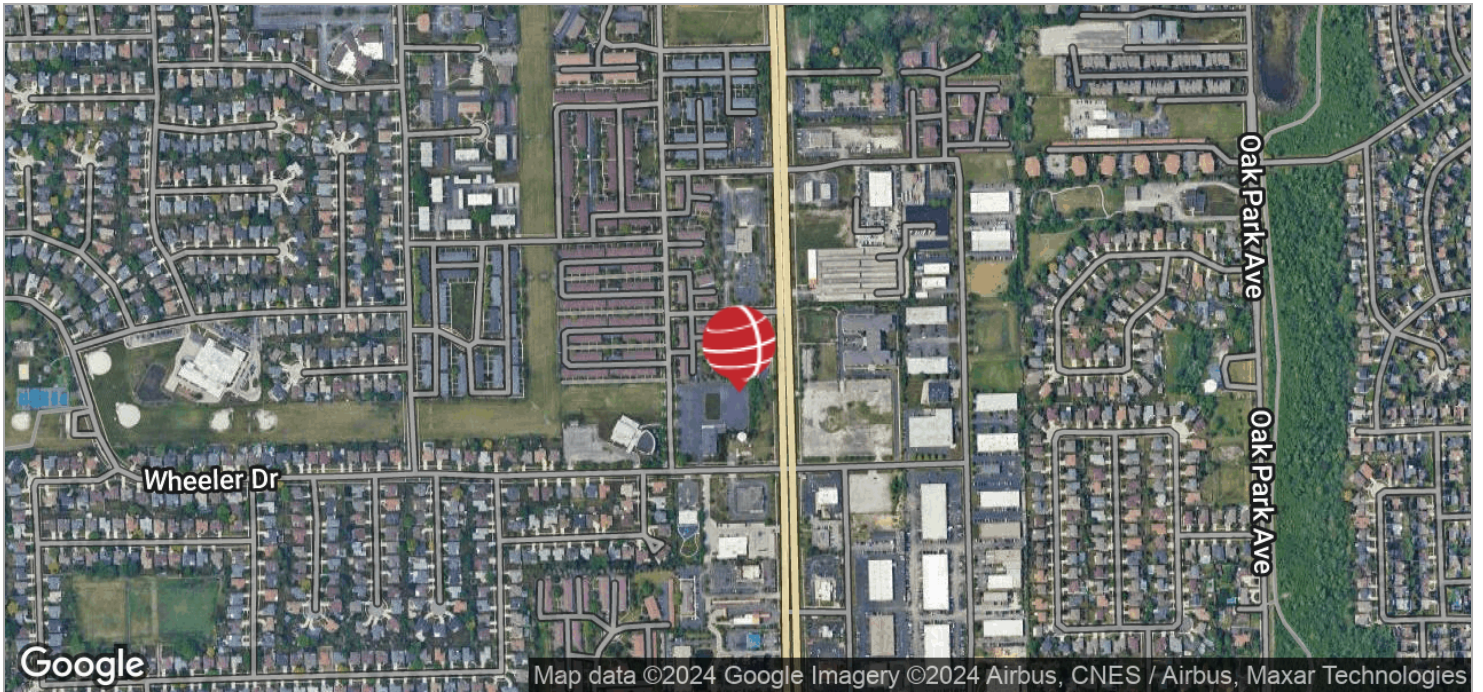
ANTONY MIOCIC
219.864.0200
amiocic@latitudeco.com

ORLAND PARK OFFICE CONDO

15424 S Harlem Ave, Orland Park, IL 60462



LOCATION MAPS



CHANDLER KIMMEL
Associate Broker
219.864.0200
ckimmel@latitudeco.com

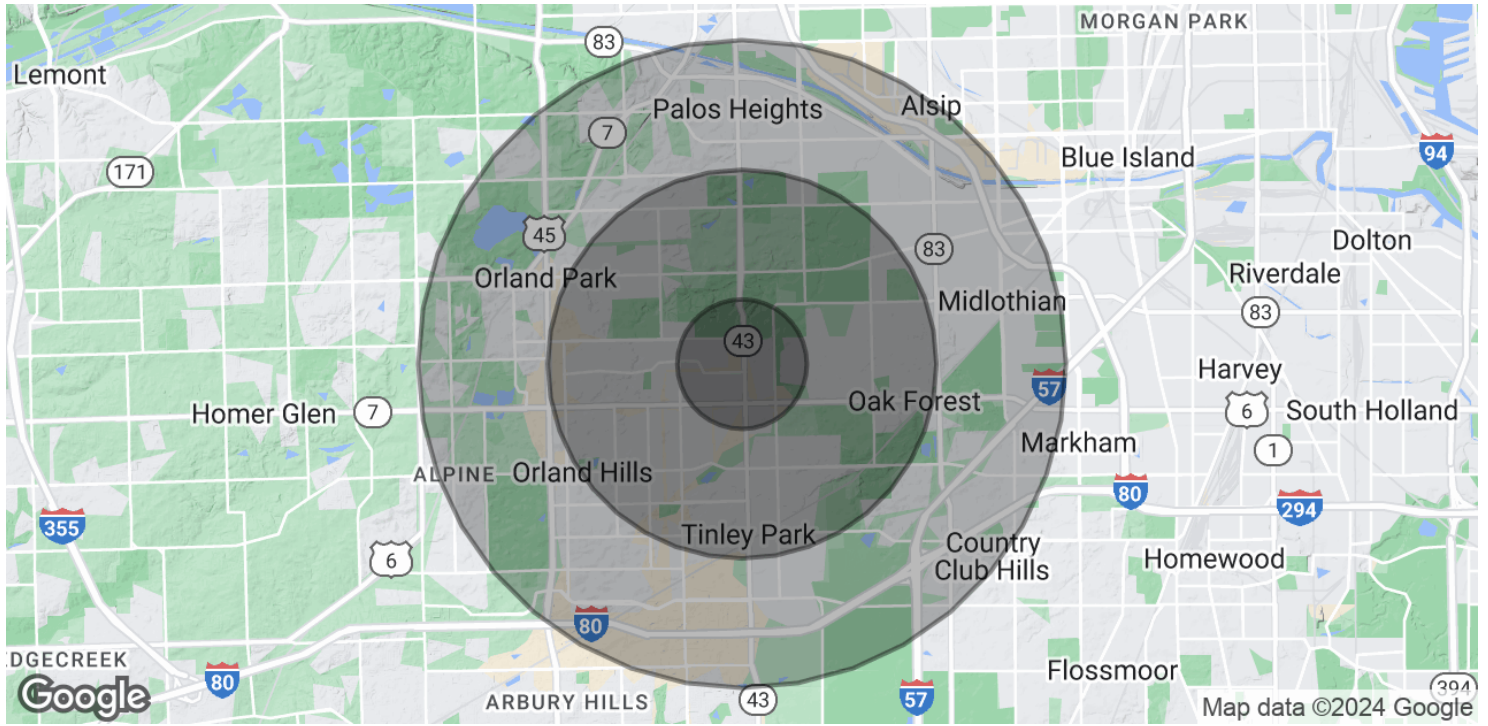
ANTONY MIOCIC
219.864.0200
amiocic@latitudeco.com

ORLAND PARK OFFICE CONDO

15424 S Harlem Ave, Orland Park, IL 60462



DEMOGRAPHICS MAP & REPORT



POPULATION

	1 MILE	3 MILES	5 MILES
Total Population	9,660	84,872	191,503
Average Age	45	43	44
Average Age (Male)	43	42	42
Average Age (Female)	47	44	45

HOUSEHOLDS & INCOME

	1 MILE	3 MILES	5 MILES
Total Households	4,133	33,777	75,343
# of Persons per HH	2.3	2.5	2.5
Average HH Income	\$110,550	\$115,745	\$117,749
Average House Value	\$292,438	\$302,982	\$316,814

Demographics data derived from AlphaMap

CHANDLER KIMMEL

Associate Broker
219.864.0200
ckimmel@latitudeco.com

ANTONY MIOCIC

219.864.0200
amiocic@latitudeco.com