

NEWMARK

RIVERS BUSINESS COMMONS

8955-8975 GUILFORD ROAD

8955-8975 GUILFORD ROAD, COLUMBIA, MARYLAND

PROPERTY HIGHLIGHTS

Single story buildings with private suite entrances

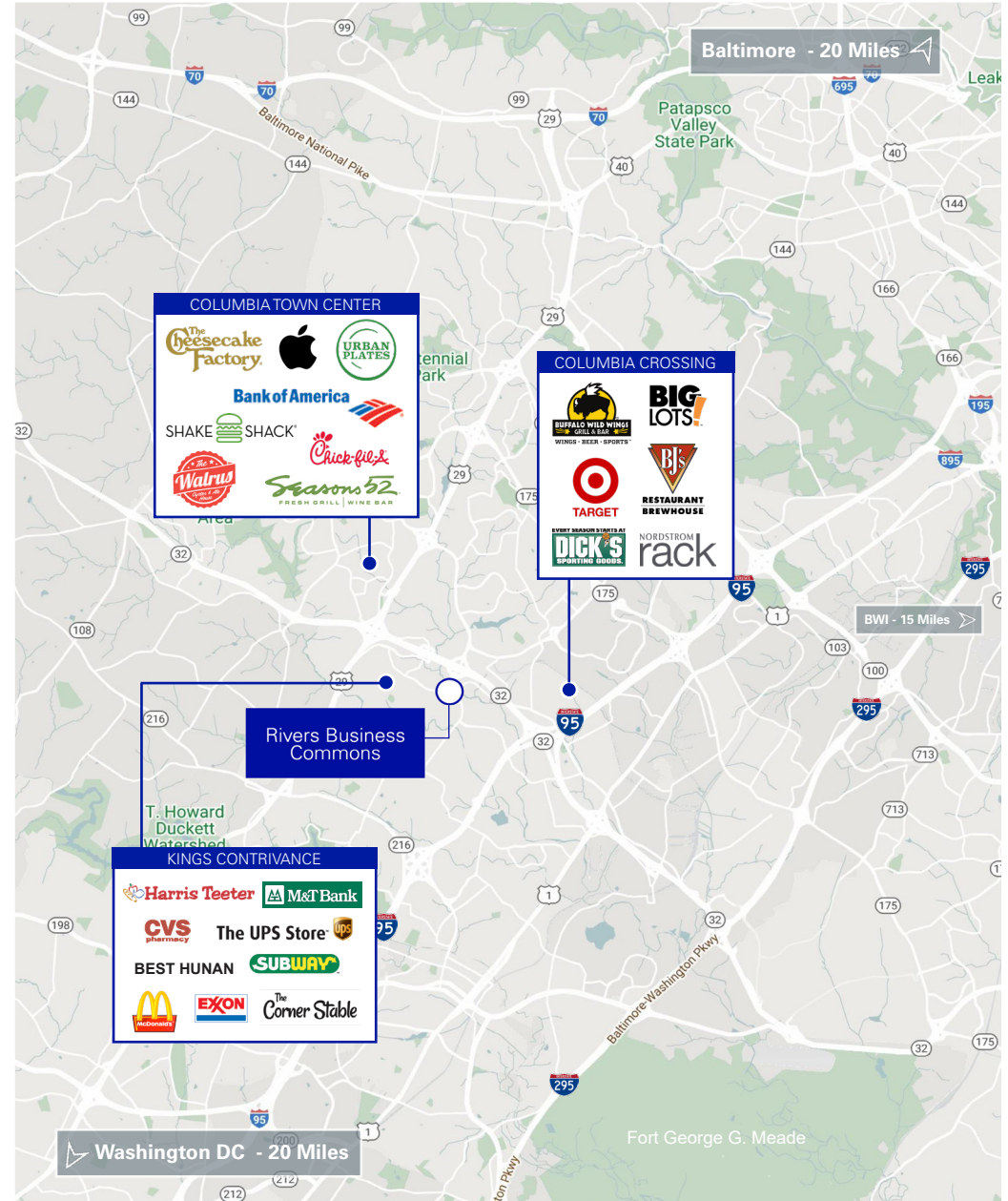
Beautiful courtyard and pond

Excellent non-stop access to I-95 and the
Baltimore-Washington Parkway (295)

Centrally located between Baltimore and Washington, D.C.

Close proximity to Baltimore Washington Thurgood Marshall Airport and Fort George G. Meade

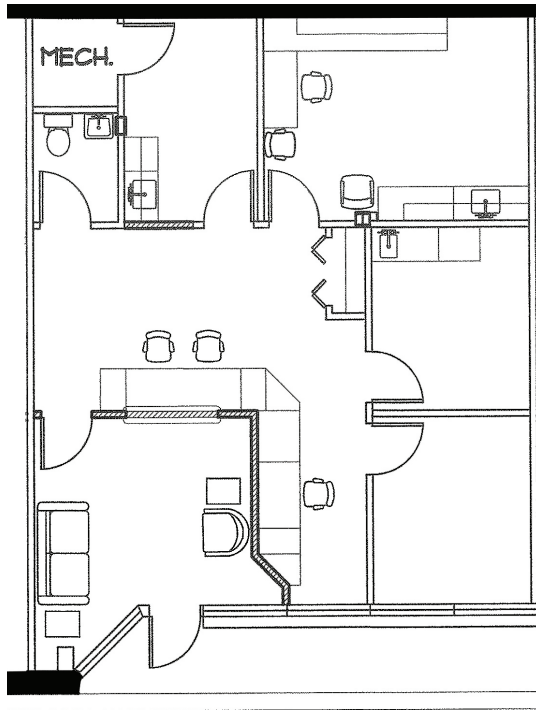
Just minutes from an abundance of amenities that include Starbucks, Dunkin Donuts, Wegmans, Harris Teeter, Whole Foods, and much more



NEWMARK

8955 GUILFORD ROAD

SUITE 140 - 1,170 SF

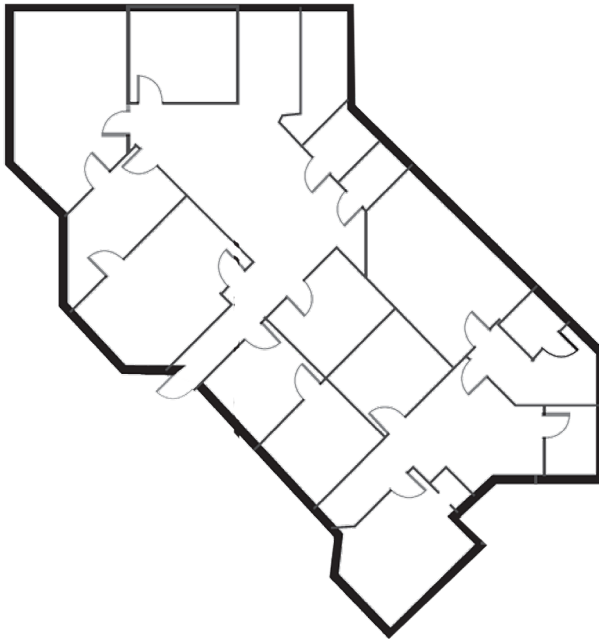


SUITE 240 - 4,722 SF

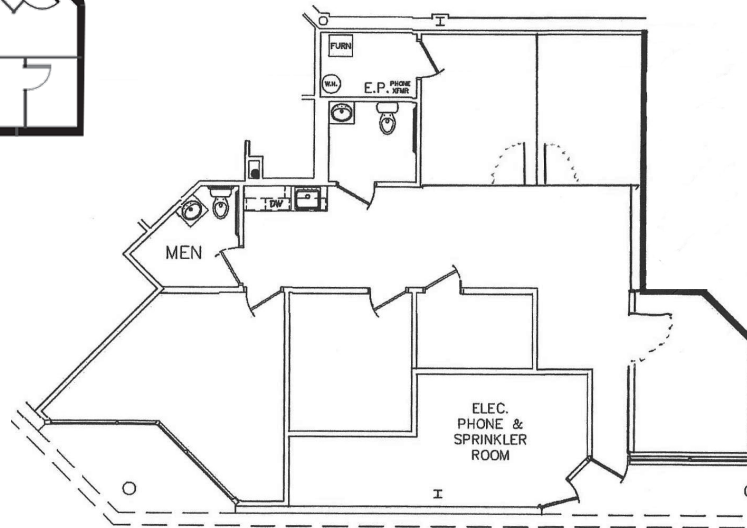


8965 GUILFORD ROAD

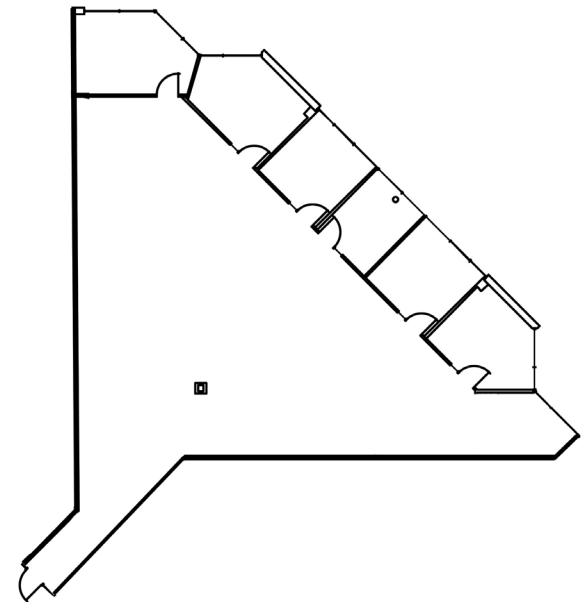
SUITE 100 - 2,770 SF



SUITE 130 - 2,058 SF



SUITE 295 - 3,585 SF



8955-8975 Guilford Road

For Leasing Information:

Dan Callihan

Executive Managing Director

t 410-625-4213

dan.callihan@nmrk.com

James Cumber

Managing Director

t 410-625-4203

james.cumber@nmrk.com

The information contained herein has been obtained from sources deemed reliable but has not been verified and no guarantee, warranty or representation, either express or implied, is made with respect to such information. Terms of sale or lease and availability are subject to change or withdrawal without notice.