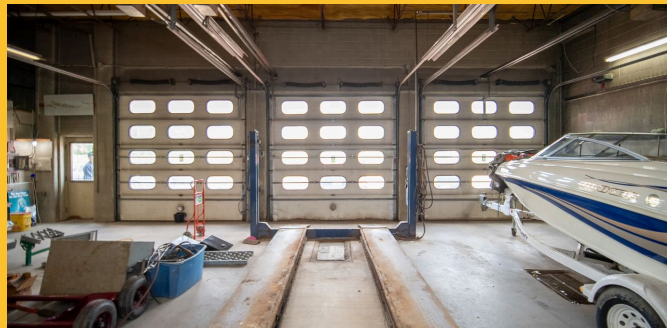


## Multipurpose Building with Garage Bays & Land

900 Shields Ave , Wabasha , MN, 55981



Lease Rates	\$3,900 Monthly
Property Size	2,596 SF
Lot Size	1.34 Acres
Zoning	Business/Commercial

- Four Garage Doors with Lifts
- Office Space with Street Access
- Over One Acre of Usable Land
- Additional Outbuildings

For more information, please contact Bucky Beeman - (507) 951-7130 | [bucky@rgi-group.com](mailto:bucky@rgi-group.com)

900 Shields Ave , Wabasha , MN 55981

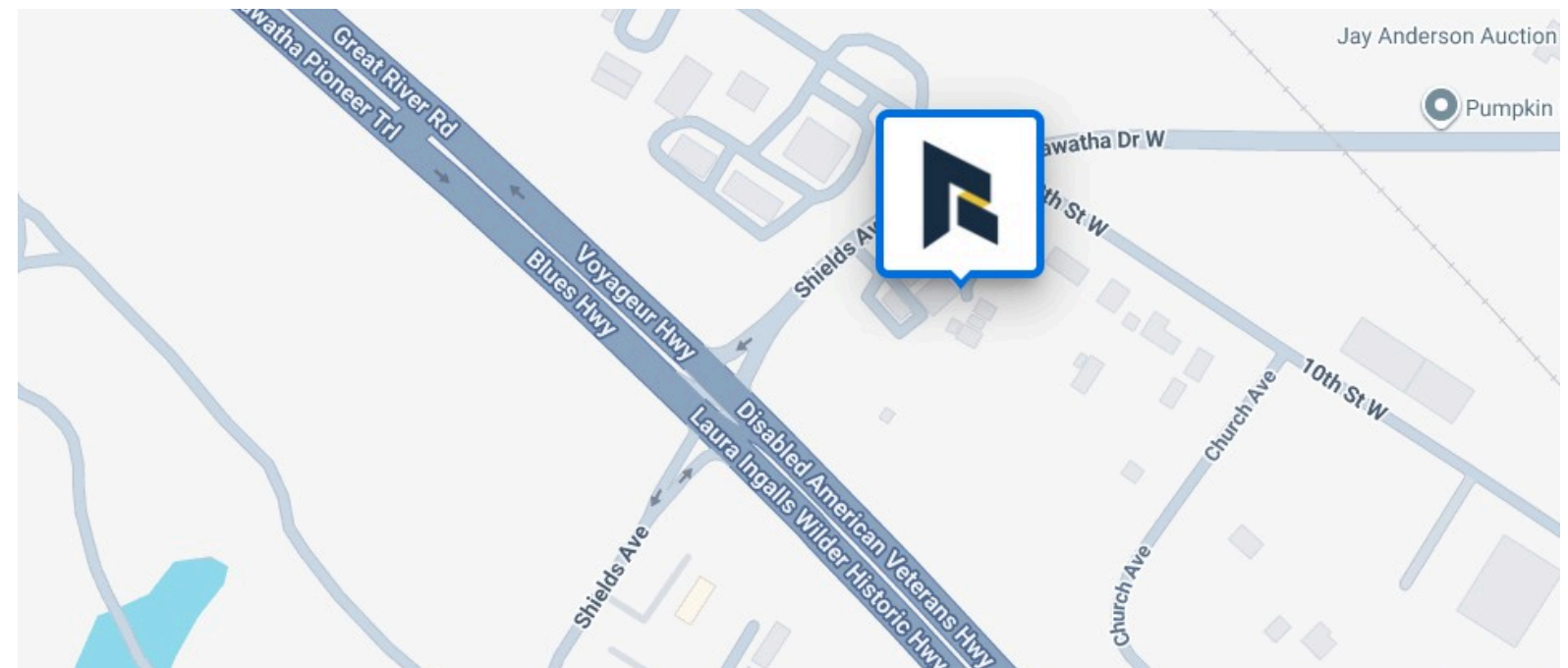
# Multipurpose Building with Garage Bays & Land

900 Shields Ave , Wabasha , MN 55981



Located just off HWY 61, this versatile property features four garage doors with installed lifts, ideal for automotive or service businesses. The property includes an office with a front entrance on Shields Ave and over one acre of land, offering opportunities for product sales, storage, or leasing. Three additional outbuildings provide extra space for storage or operations.

Lease Rates	\$3,900 Monthly
Property Size	2,596 SF
Lot Size	1.34 Acres
Zoning	Business/Commercial



**Bucky Beeman**

(507) 951-7130

bucky@rgi-group.com